



Chipsmall Limited consists of a professional team with an average of over 10 year of expertise in the distribution of electronic components. Based in Hongkong, we have already established firm and mutual-benefit business relationships with customers from,Europe,America and south Asia,supplying obsolete and hard-to-find components to meet their specific needs.

With the principle of “Quality Parts,Customers Priority,Honest Operation,and Considerate Service”,our business mainly focus on the distribution of electronic components. Line cards we deal with include Microchip,ALPS,ROHM,Xilinx,Pulse,ON,Everlight and Freescale. Main products comprise IC,Modules,Potentiometer,IC Socket,Relay,Connector.Our parts cover such applications as commercial,industrial, and automotives areas.

We are looking forward to setting up business relationship with you and hope to provide you with the best service and solution. Let us make a better world for our industry!



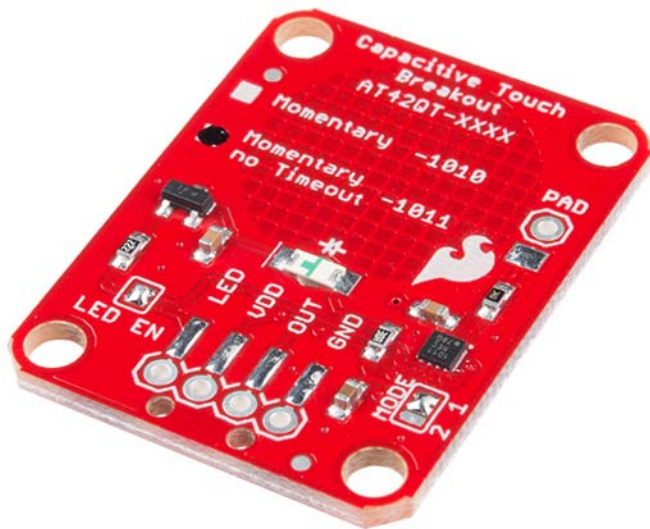
Contact us

Tel: +86-755-8981 8866 Fax: +86-755-8427 6832

Email & Skype: info@chipsmall.com Web: www.chipsmall.com

Address: A1208, Overseas Decoration Building, #122 Zhenhua RD., Futian, Shenzhen, China





SparkFun Capacitive Touch Breakout - AT42QT1011

SEN-14520

If you need to add user input without using a button, then a capacitive touch interface might be the answer. The AT42QT1011 SparkFun Capacitive Touch Breakout offers a single, momentary capacitive touch button with easy-to-use digital I/O pins.

The AT42QT1011 is a dedicated, single-button capacitive sense chip. The chip handles monitoring a conductive area for touch. As long as a touch (e.g., from a finger) is detected, the AT42QT1011 keeps the output line high. Otherwise, the line is kept low. You just need to provide a power source (1.8V–5V) and ground for the AT42QT1011 to work. Additionally, a PAD pin is available if you would like to create your own external electrode.

Unlike its sibling, the AT42QT1011 does not have an internal time-out, meaning that if you hold your finger to the breakout's pad for any length of time, it will stay on. The difference between the AT42QT1010 and the AT42QT1011 is small but may be a game changer depending on your project's uses.

