



Chipsmall Limited consists of a professional team with an average of over 10 year of expertise in the distribution of electronic components. Based in Hongkong, we have already established firm and mutual-benefit business relationships with customers from,Europe,America and south Asia,supplying obsolete and hard-to-find components to meet their specific needs.

With the principle of “Quality Parts,Customers Priority,Honest Operation,and Considerate Service”,our business mainly focus on the distribution of electronic components. Line cards we deal with include Microchip,ALPS,ROHM,Xilinx,Pulse,ON,Everlight and Freescale. Main products comprise IC,Modules,Potentiometer,IC Socket,Relay,Connector.Our parts cover such applications as commercial,industrial, and automotives areas.

We are looking forward to setting up business relationship with you and hope to provide you with the best service and solution. Let us make a better world for our industry!



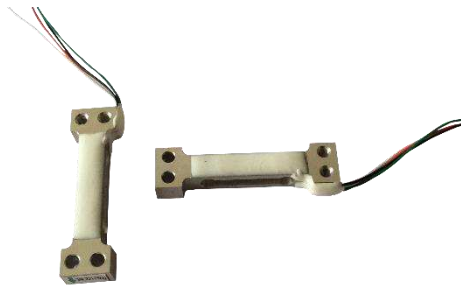
## Contact us

Tel: +86-755-8981 8866 Fax: +86-755-8427 6832

Email & Skype: info@chipsmall.com Web: www.chipsmall.com

Address: A1208, Overseas Decoration Building, #122 Zhenhua RD., Futian, Shenzhen, China

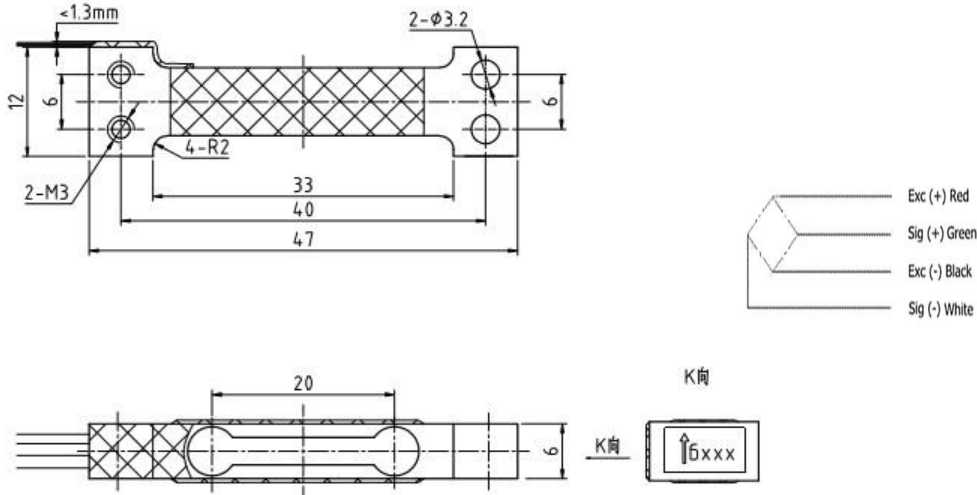




**Features:**

- ◆ Capacity : 100-1500g
- ◆ Material: aluminum-alloy
- ◆ Type: Parallel beam type
- ◆ Defend grade: IP65
- ◆ Application : body scales, hand scales, kitchen scales, postal scales, fishing scales, baby body scales and other micro electronic weighing systems.

**Electrical connection and Dimensions:(dimension unit: mm)**



**Specifications:**

capacity	g	100, 150, 200	300,500,750	1000,1500
rated output	mV/V	0.6 ± 0.15	0.7 ± 0.15	1.0 ± 0.15
safe overload	%FS	150		
ultimate overload	%FS	200		
excitation voltage	Vdc	≤6		
combined error	%FS	0.05		
zero balance	%FS	± 0.1		
non-linearity	%FS	± 0.05		
hysteresis	%FS	± 0.05		
repeatability	%FS	± 0.05		
creep	%FS/3min	± 0.05		
input resistance	Ω	1090 ± 10		
output resistance	Ω	1000 ± 10		
insulation resistance	M Ω	≥ 2000 @ 50 Vdc		
operating temperature range	°C	-10 ~ +40		
compensated temperature range	°C	-20 ~ +60		
temperature coefficient of SPAN	%FS/10°C	± 0.1		
temperature coefficient of ZERO	%FS/10°C	± 0.1		
Corner correction	%FS	± 0.1		
Electrical connection	cable	4 color wire, Ø0.6 × 110 mm excitation(+):Red excitation(-):Black signal(+):Green signal(-):White		

※Ordering code: model-capacity- rated output-accuracy-defend grade- the length of cable