



Chipsmall Limited consists of a professional team with an average of over 10 year of expertise in the distribution of electronic components. Based in Hongkong, we have already established firm and mutual-benefit business relationships with customers from,Europe,America and south Asia,supplying obsolete and hard-to-find components to meet their specific needs.

With the principle of “Quality Parts,Customers Priority,Honest Operation,and Considerate Service”,our business mainly focus on the distribution of electronic components. Line cards we deal with include Microchip,ALPS,ROHM,Xilinx,Pulse,ON,Everlight and Freescale. Main products comprise IC,Modules,Potentiometer,IC Socket,Relay,Connector.Our parts cover such applications as commercial,industrial, and automotives areas.

We are looking forward to setting up business relationship with you and hope to provide you with the best service and solution. Let us make a better world for our industry!



Contact us

Tel: +86-755-8981 8866 Fax: +86-755-8427 6832

Email & Skype: info@chipsmall.com Web: www.chipsmall.com

Address: A1208, Overseas Decoration Building, #122 Zhenhua RD., Futian, Shenzhen, China



Digital Infrared motion sensor (SKU:SEN0018)



Contents

- 1 Introduction
- 2 Specification
- 3 Application
- 4 Pinout
- 5 Tutorial
 - 5.1 Connection Diagram
 - 5.2 Sample Code
 - 5.3 Result
- 6 FAQ
- 7 More

Introduction

This is a simple to use motion sensor. Power it up and wait 1-2 seconds for the sensor to get a snapshot of the still room. If anything moves after that period, the 'alarm' pin will go low.

Specification

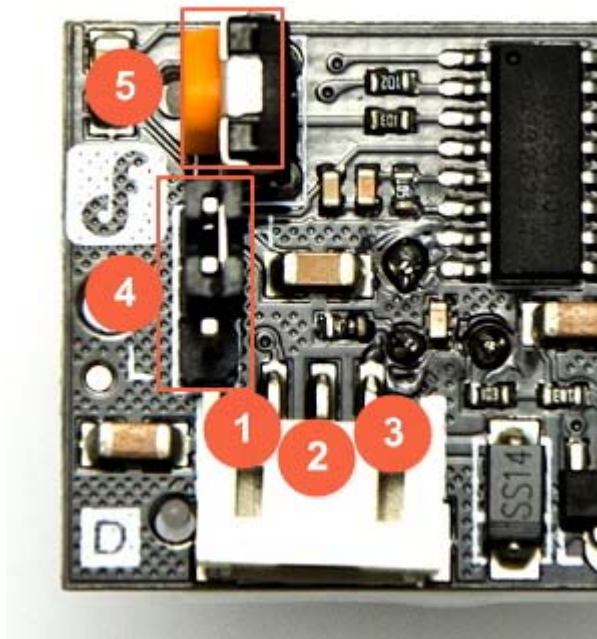
- Type: Digital
- Supply Voltage:3~5V

- Current:50μA
- Working temperature:0°C~ +70°C
- Output level(HIGH):4V
- Output level(LOW):0.4V
- Detect angle:110 Degree
- Detect distance:7 meters
- Size:28mm×36mm
- Weight:25g

Application

- Automatic door
- Infrared burglar alarm
- The highway vehicle traffic counter

Pinout



NumLabel

1 Digital Signal Out

2 VCC

3 GND

Jumper Selection: Repeatable trigger and unrepeatable trigger selection.

4

H: Repeatable trigger

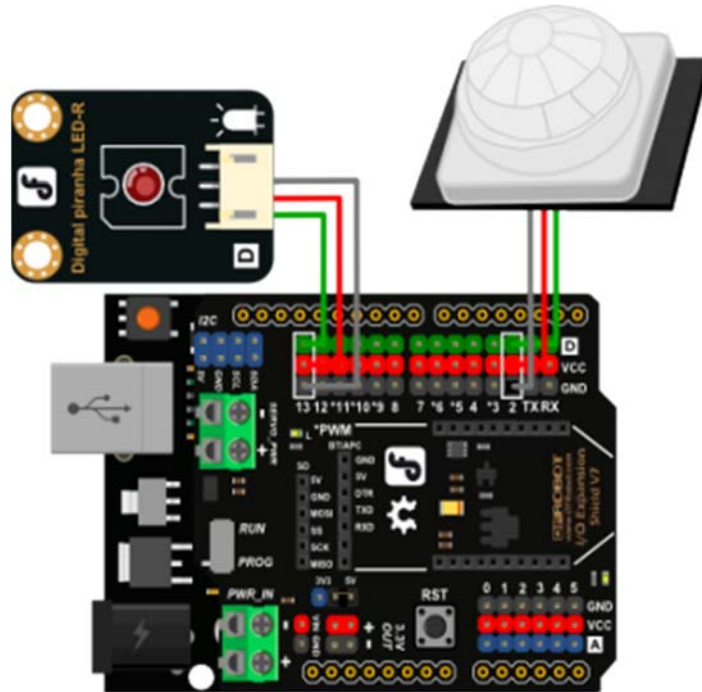
L: Unrepeatable trigger

5

Potentiometer: To adjust trigger latency from 0.5s to 50s.

Tutorial

Connection Diagram



Motion sensor Connection diagram

Sample Code

```
const int buttonPin = 2;
const int ledPin = 13;
void setup() {
  pinMode(ledPin, OUTPUT);
  pinMode(buttonPin, INPUT);
}
void loop()
{
  if (digitalRead(buttonPin) == HIGH)
  {
    digitalWrite(ledPin, HIGH);
  }
  else {
    digitalWrite(ledPin, LOW);
  }
}
```

```
}  
}
```

Result

When sensors detect people closed, the light will be lighted.

For any question/advice/cool idea to share, please visit [DFRobot Forum](#).