



Chipsmall Limited consists of a professional team with an average of over 10 year of expertise in the distribution of electronic components. Based in Hongkong, we have already established firm and mutual-benefit business relationships with customers from,Europe,America and south Asia,supplying obsolete and hard-to-find components to meet their specific needs.

With the principle of “Quality Parts,Customers Priority,Honest Operation,and Considerate Service”,our business mainly focus on the distribution of electronic components. Line cards we deal with include Microchip,ALPS,ROHM,Xilinx,Pulse,ON,Everlight and Freescale. Main products comprise IC,Modules,Potentiometer,IC Socket,Relay,Connector.Our parts cover such applications as commercial,industrial, and automotives areas.

We are looking forward to setting up business relationship with you and hope to provide you with the best service and solution. Let us make a better world for our industry!



Contact us

Tel: +86-755-8981 8866 Fax: +86-755-8427 6832

Email & Skype: info@chipsmall.com Web: www.chipsmall.com

Address: A1208, Overseas Decoration Building, #122 Zhenhua RD., Futian, Shenzhen, China





Adjustable Infrared Sensor Switch (SKU:SEN0019)



Contents

- [1 Introduction](#)
- [2 Specification](#)
- [3 Tutorial](#)
 - [3.1 Connection Diagram](#)
 - [3.2 Sample Code](#)
 - [3.3 Result](#)
- [4 Trouble shooting](#)

Introduction

The DFRobot Adjustable Infrared Sensor Switch is a set of transmitter and receiver in one of the photoelectric switch sensor. The detection distance can be adjusted according to the demand. The DFRobot Adjustable Infrared Sensor Switch is small, easy to use, inexpensive, easy to assemble and can be widely used in robot to avoid obstacles, interactive media, industrial assembly line, and many other occasions. The switching signal output differs in accordance to the obstacles. It remains high when no obstacles and remains low when there are obstacles. There is also a red led on its back to indicate the sensor status.

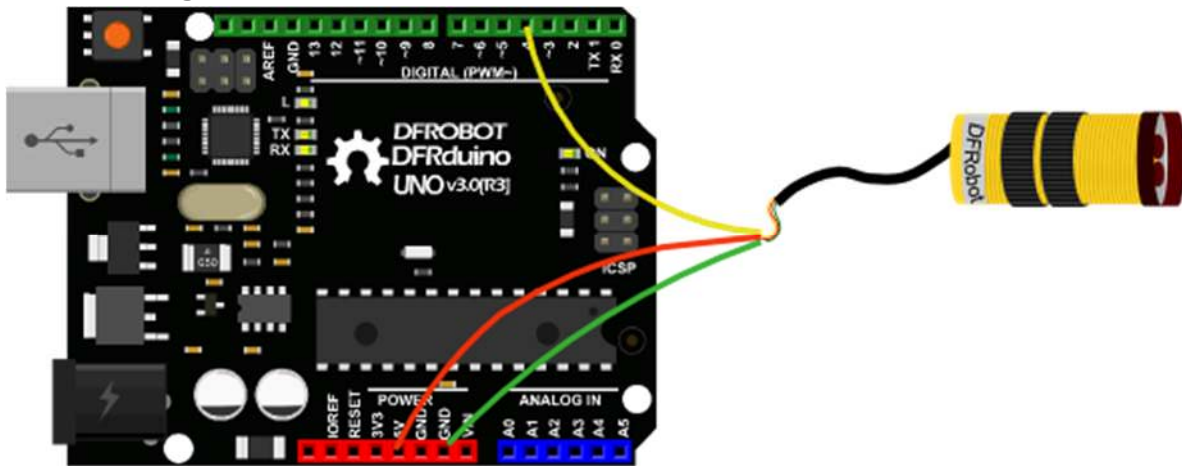
Specification

- Power supply: 5V
- Working Current: <100mA
- Adjustable detection range: 3cm - 80cm
- Pin description:

- Red - 5V
- Green - GND
- Yellow - Digital output
- Digital output:
 - "0" - found barrier (~0V)
 - "1" - no barrier (~4V)
- Dimension: 45x18mm

Tutorial

Connection Diagram



Sample Code

```
const int InfraredSensorPin = 4; //Connect the signal pin to the digital pin 4
const int LedDisp = 13;

void setup()
{
  Serial.begin(57600);
  Serial.println("Start!");
  pinMode(InfraredSensorPin, INPUT);
  pinMode(LedDisp, OUTPUT);
  digitalWrite(LedDisp, LOW);
}

void loop()
```


Trouble shooting

Q 1. We have to use manual, because describes explanation is too simple?

A: This is a photoelectric switch, only three lines, power, ground and output, so have not too complicated presentation.

Q 2. Why Connect the power, light has been lit?

A: To ensure stable power supply is $5V \pm 2\%$, followed by the output of the probe is not connected to the microcontroller output port.

Q 3. Why connect infrared switch power, light has been lit?

A: .Please

1. Check the power supply has not reversed, in a word, the infrared output to supply positive;
2. check the probe is in the direction of the detection range that is no obstacle, the best against the open direction.

Q 4. If need the pull-up resistor, how much should be?

A: About 10K.

Any question and more cool ideas to share, please visit [DFRobot Forum](#)