



Chipsmall Limited consists of a professional team with an average of over 10 year of expertise in the distribution of electronic components. Based in Hongkong, we have already established firm and mutual-benefit business relationships with customers from,Europe,America and south Asia,supplying obsolete and hard-to-find components to meet their specific needs.

With the principle of “Quality Parts,Customers Priority,Honest Operation,and Considerate Service”,our business mainly focus on the distribution of electronic components. Line cards we deal with include Microchip,ALPS,ROHM,Xilinx,Pulse,ON,Everlight and Freescale. Main products comprise IC,Modules,Potentiometer,IC Socket,Relay,Connector.Our parts cover such applications as commercial,industrial, and automotives areas.

We are looking forward to setting up business relationship with you and hope to provide you with the best service and solution. Let us make a better world for our industry!



Contact us

Tel: +86-755-8981 8866 Fax: +86-755-8427 6832

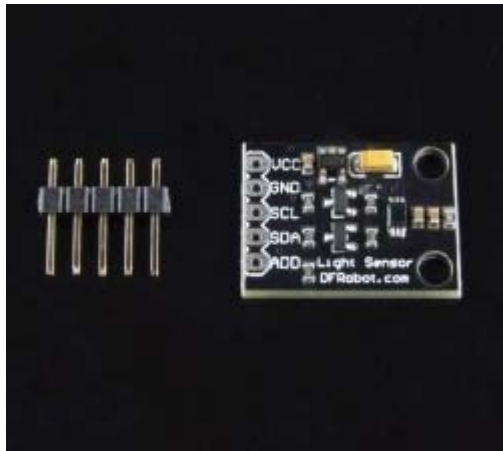
Email & Skype: info@chipsmall.com Web: www.chipsmall.com

Address: A1208, Overseas Decoration Building, #122 Zhenhua RD., Futian, Shenzhen, China





Light Sensor (SKU:SEN0097)



Editing Light Sensor

Contents

- [1 Introduction](#)
 - [1.1 Specification](#)
- [2 Wiring Diagram](#)
- [3 Sample Code](#)

Introduction

This is a BH1750 light intensity sensor breakout board with a 16 bit AD converter built-in which can directly output a digital signal, there is no need for complicated calculations. This is a more accurate and easier to use version of the simple photoresistor which only outputs a voltage that needs to be calculated in order to obtain meaningful data. With the BH1750 Light Sensor intensity can be directly measured by the luxmeter, without needing to make calculations. The data which is output by this sensor is directly output in Lux (Lx). When objects which are lighted in homogeneous get the 1 lx luminous flux in one square meter, their light intensity is 1lx. Sometimes to take good advantage of the illuminant, you can add a reflector to the illuminant. So that there will be more luminous flux in some directions and it can increase the illumination of the target surface.

For example:

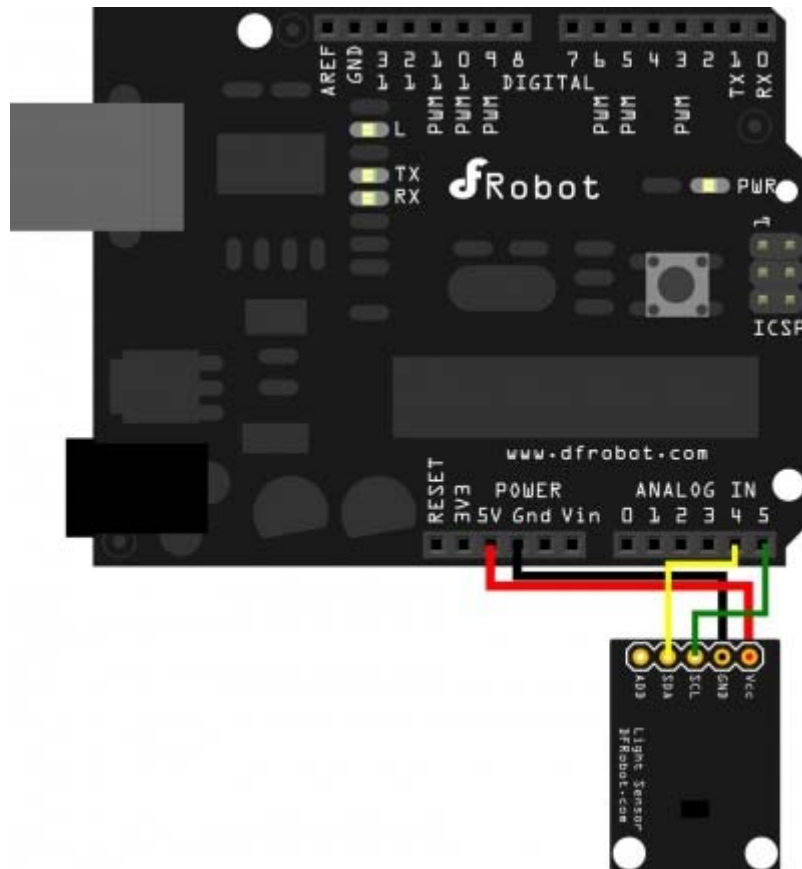
Night: 0.001--0.02;
moonlight:0.02--0.3;
cloudy indoor:5--50;

cloudy outdoor:50--500;
Sunny indoor:100--1000;
under the sunlight in summer afternoon: about 10*6 power;
reading books for intensity of illumination:50--60;
home video standard intensity of illumination:1400.

Specification

power supply voltage: +3 to 5Vdc
Interface: I2C
Wide range and High resolution. (1 - 65535 lx)
It is possible to select 2 types of I2C slave-address.
Small measurement variation (+/- 20%)
Size: 0.85*0.63*0.13"(21*16*3.3mm)

Wiring Diagram



Light Sensor Wiring diagram

Please note that the "add" Pin is to assign a different I2C address to the sensor. For our sample code this pin is not used. For more information about I2C protocol, go to [Wikipedia I2C](https://en.wikipedia.org/wiki/I2C)

Sample Code

```
/*
  Sample code for the BH1750 Light sensor
  Version 0.1
  website:www.DFRobot.com

  Connection:

  VCC-5v
  GND-GND
  SCL-SCL(analog pin 5)
  SDA-SDA(analog pin 4)
  ADD-NC
  */

#include <Wire.h> //BH1750 IIC Mode
#include <math.h>
int BH1750address = 0x23; //setting i2c address

byte buff[2];
void setup()
{
  Wire.begin();
  Serial.begin(57600); //init Serial band rate
}

void loop()
{
  int i;
  uint16_t val=0;
  BH1750_Init(BH1750address);
  delay(200);
```

```

if (2==BH1750_Read(BH1750address))
{
    val=((buff[0]<<8)|buff[1])/1.2;
    Serial.print(val,DEC);
    Serial.println("[lx]");
}
delay(150);
}

int BH1750_Read(int address) //
{
    int i=0;
    Wire.beginTransmission(address);
    Wire.requestFrom(address, 2);
    while(Wire.available()) //
    {
        buff[i] = Wire.receive(); // receive one byte
        i++;
    }
    Wire.endTransmission();
    return i;
}

void BH1750_Init(int address)
{
    Wire.beginTransmission(address);
    Wire.send(0x10);//1lx resolution 120ms
    Wire.endTransmission();
}

```