



Chipsmall Limited consists of a professional team with an average of over 10 year of expertise in the distribution of electronic components. Based in Hongkong, we have already established firm and mutual-benefit business relationships with customers from,Europe,America and south Asia,supplying obsolete and hard-to-find components to meet their specific needs.

With the principle of “Quality Parts,Customers Priority,Honest Operation,and Considerate Service”,our business mainly focus on the distribution of electronic components. Line cards we deal with include Microchip,ALPS,ROHM,Xilinx,Pulse,ON,Everlight and Freescale. Main products comprise IC,Modules,Potentiometer,IC Socket,Relay,Connector.Our parts cover such applications as commercial,industrial, and automotives areas.

We are looking forward to setting up business relationship with you and hope to provide you with the best service and solution. Let us make a better world for our industry!



Contact us

Tel: +86-755-8981 8866 Fax: +86-755-8427 6832

Email & Skype: info@chipsmall.com Web: www.chipsmall.com

Address: A1208, Overseas Decoration Building, #122 Zhenhua RD., Futian, Shenzhen, China



LPG Gas Sensor(MQ6) (SKU:SEN0131)



Contents

- [1 Introduction](#)
 - [1.1 Specification](#)
- [2 Pin Definition](#)
- [3 Connection Diagram](#)
- [4 Sample Code](#)

Introduction

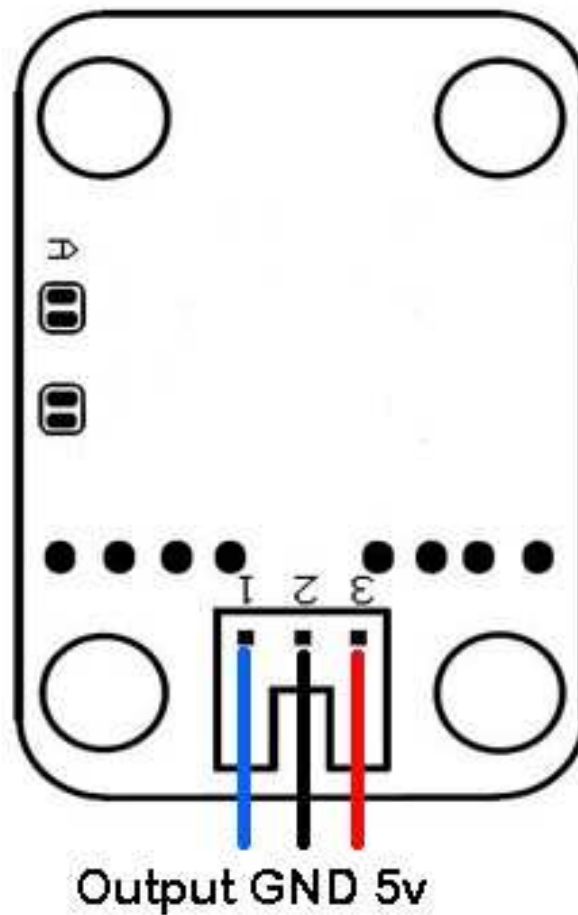
The MQ6 is a simple-to-use liquefied petroleum gas (LPG) sensor. It can be used in gas leakage detecting equipment in consumer and industry applications, this sensor is suitable for detecting LPG, iso-butane, propane, LNG. Avoid the noise of alcohol, cooking fumes and cigarette smoke. The sensitivity can be adjusted by the potentiometer.

Specification

- Power supply needs: 5V
- Interface type: Analog
- Pin Definition: 1-Output 2-GND 3-VCC
- High sensitivity to LPG, iso-butane, propane
- Small sensitivity to alcohol, smoke
- Fast response
- Stable and long life
- Simple drive circuit
- Size: 40x20mm

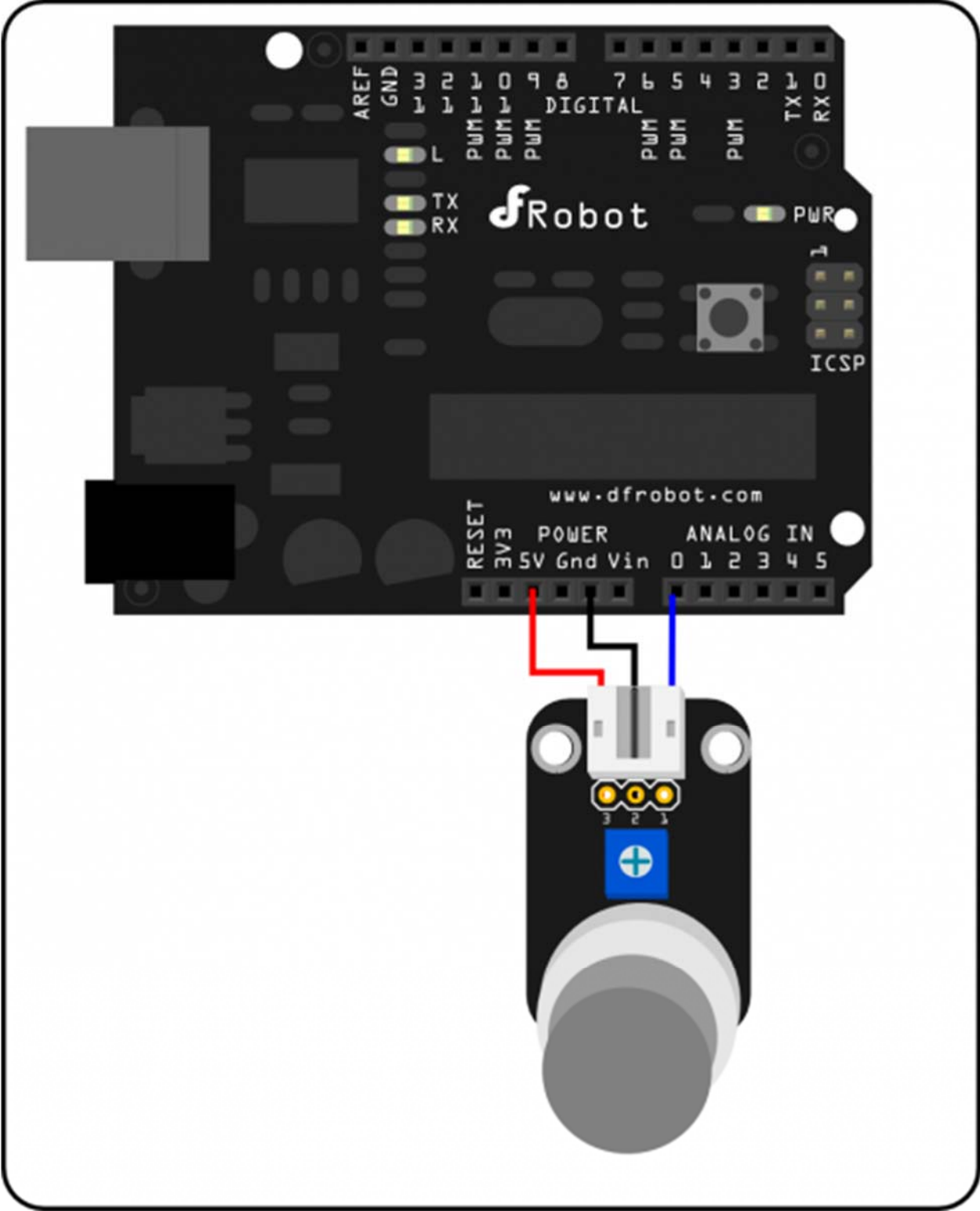
Pin Definition

1. Signal Output
2. GND
3. Power



Analog Sensor Pin Definition

Connection Diagram



Analog sensor connection diagram

Sample Code

```
///  
//Arduino Sample Code  
void setup()  
{  
  Serial.begin(9600); //Set serial baud rate to 9600 bps  
}  
void loop()  
{  
  int val;  
  val=analogRead(0); //Read Gas value from analog 0  
  Serial.println(val,DEC); //Print the value to serial port  
  delay(100);  
}
```