



Chipsmall Limited consists of a professional team with an average of over 10 year of expertise in the distribution of electronic components. Based in Hongkong, we have already established firm and mutual-benefit business relationships with customers from,Europe,America and south Asia,supplying obsolete and hard-to-find components to meet their specific needs.

With the principle of “Quality Parts,Customers Priority,Honest Operation,and Considerate Service”,our business mainly focus on the distribution of electronic components. Line cards we deal with include Microchip,ALPS,ROHM,Xilinx,Pulse,ON,Everlight and Freescale. Main products comprise IC,Modules,Potentiometer,IC Socket,Relay,Connector.Our parts cover such applications as commercial,industrial, and automotives areas.

We are looking forward to setting up business relationship with you and hope to provide you with the best service and solution. Let us make a better world for our industry!



Contact us

Tel: +86-755-8981 8866 Fax: +86-755-8427 6832

Email & Skype: info@chipsmall.com Web: www.chipsmall.com

Address: A1208, Overseas Decoration Building, #122 Zhenhua RD., Futian, Shenzhen, China





Analog Gas Sensor(MQ9) SKU:SEN0134

Fom Robot Wiki



Analog Gas Sensor(MQ9) SKU : SEN0134

Contents

- 1 Introduction
- 2 Application
- 3 Specification
- 4 Connecting Diagram
- 5 Sample Code

Introduction

MQ-9 gas sensor has high sensitivity to Carbon Monoxide, Methane and LPG. The sensor can be used to detect different gases containing CO and combustible gases, it is low cost and suitable for different applications.

Sensitive material of MQ-9 gas sensor is SnO_2 , which has a lower conductivity in clean air. It makes detection by cycling high and low temperature, and detects CO when low temperature (heated by 1.5V). The sensor's conductivity is higher along with the gas concentration rising. When high temperature (heated by 5.0V), it detects Methane, Propane etc combustible gas and cleans the other gases adsorbed under low temperature.

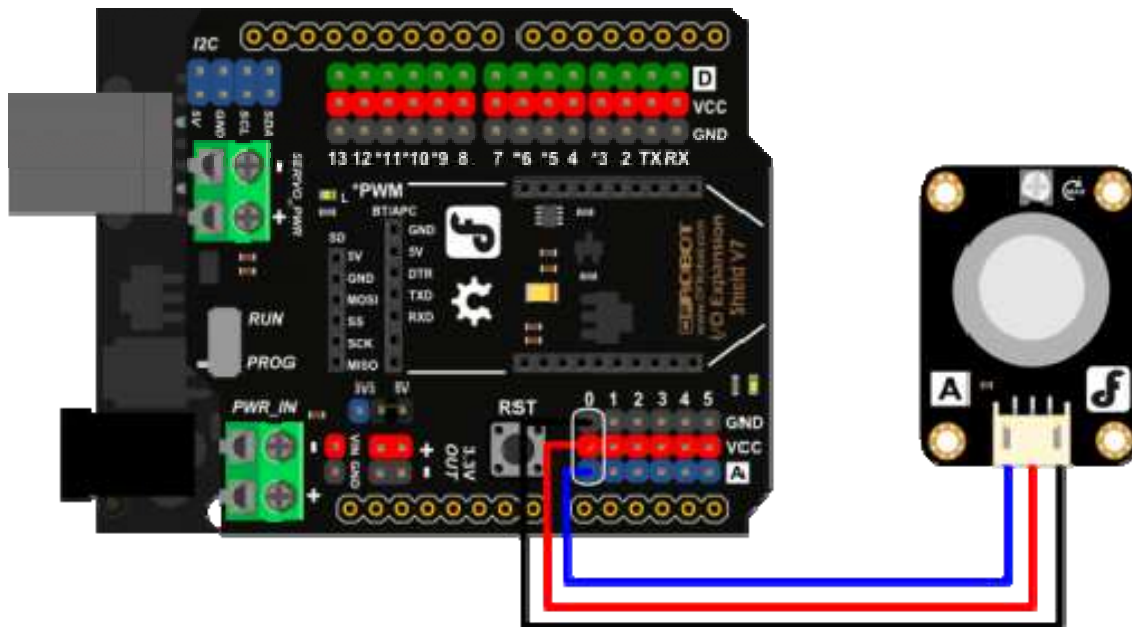
Application

- Domestic gas leakage detector
- Industrial gas detector
- Portable gas detector

Specification

- Power supply needs: 5V
- Interface type: Analog
- Sensor Type: Semiconductor
- Concentration:
 - 10-1000ppm CO
 - 100-10000ppm combustible gas
- Good sensitivity to CO/Combustible gas
- High sensitivity to Methane, Propane and CO
- Long life and low cost
- Size: 36.4x26.6mm

Connecting Diagram



Sample Code

```
///  
//Arduino Sample Code  
void setup()  
{  
  Serial.begin(9600); //Set serial baud rate to 9600 bps  
}  
void loop()  
{  
  int val;  
  val=analogRead(0); //Read Gas value from analog 0  
  Serial.println(val,DEC); //Print the value to serial port  
  delay(100);  
}
```