



Chipsmall Limited consists of a professional team with an average of over 10 year of expertise in the distribution of electronic components. Based in Hongkong, we have already established firm and mutual-benefit business relationships with customers from,Europe,America and south Asia,supplying obsolete and hard-to-find components to meet their specific needs.

With the principle of "Quality Parts,Customers Priority,Honest Operation,and Considerate Service",our business mainly focus on the distribution of electronic components. Line cards we deal with include Microchip,ALPS,ROHM,Xilinx,Pulse,ON,Everlight and Freescale. Main products comprise IC,Modules,Potentiometer,IC Socket,Relay,Connector.Our parts cover such applications as commercial,industrial, and automotives areas.

We are looking forward to setting up business relationship with you and hope to provide you with the best service and solution. Let us make a better world for our industry!



Contact us

Tel: +86-755-8981 8866 Fax: +86-755-8427 6832

Email & Skype: info@chipsmall.com Web: www.chipsmall.com

Address: A1208, Overseas Decoration Building, #122 Zhenhua RD., Futian, Shenzhen, China





Smart Grayscale sensor SKU:SEN0147



WiFi Bee V1.0 (SKU:SEN0147)

Contents

- 1 Introduction
- 2 Specifications
- 3 Tools need
- 4 Change the sensor between Analog and Digital
 - 4.1 Analog mode
 - 4.2 Digital mode

Introduction

This time we reinvented the line-tracking sensor. Beyond recognizing two specific colors or output through digital or analog only, the Smart Gray Sensor has integrated both digital and analog output features.

In digital mode, user can have two color data recorded through simple button operation, to achieve two-color detections with high and low outputs, and requires no more configuration after being set. In analog mode, the output value reacts precisely to the color grayscale detected.

Apart from being a stable and adaptative sensor in various environments, the Smart Grayscale Sensor also demonstrates a great potential in low-cost projects of color, grayscale and adjacency lights.

Specifications

- Supply voltage: 5v
- Interface Mode: Digital / Analog
- Output:
 - Analog mode :0-5v output
 - Digital mode: TTL level output (0v or 5v) according to application needs
- Digital switching signal feedback and dual analog gradation feedback
- You can set the digital mode supports color detection
- Dimensions: 37x10x15mm

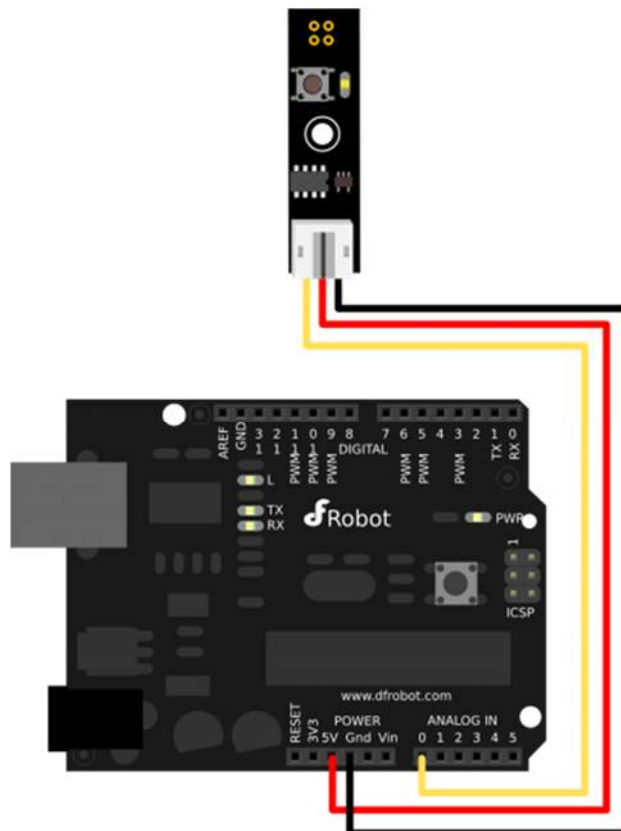
Tools need

- Smart Grayscale sensor V1.0
- Arduino controller

Change the sensor between Analog and Digital

Just short click the button and the mode will be changed between analog and digital.

Analog mode



Grayscale Sensor Connection Diagram in analog mode

In analog mode, the brighter the Sensor detects, the brighter LED will be. You can connect the sensor to analog pin to read the Grayscale from the sensor, just as the normal grayscale sensor.

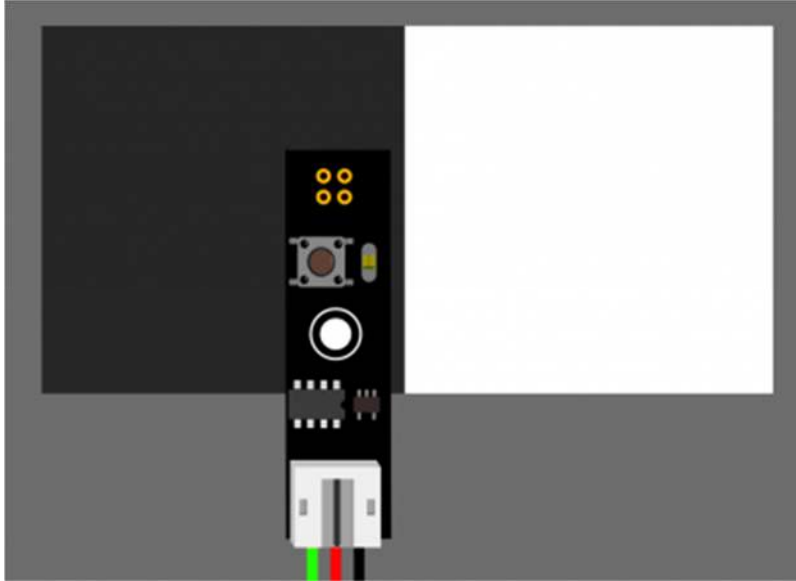
Code Example:

```
int grayscalePin=0;
void setup()
{
  Serial.begin(9600);
  Serial.println("Smart Grayscale sensor:");
}
void loop()
{
  Serial.print("Grayscale:");
  Serial.println(analogRead(grayscalePin));
  delay(500);
}
```

Digital mode

In digital mode, you can set the logic of two different color by your own.

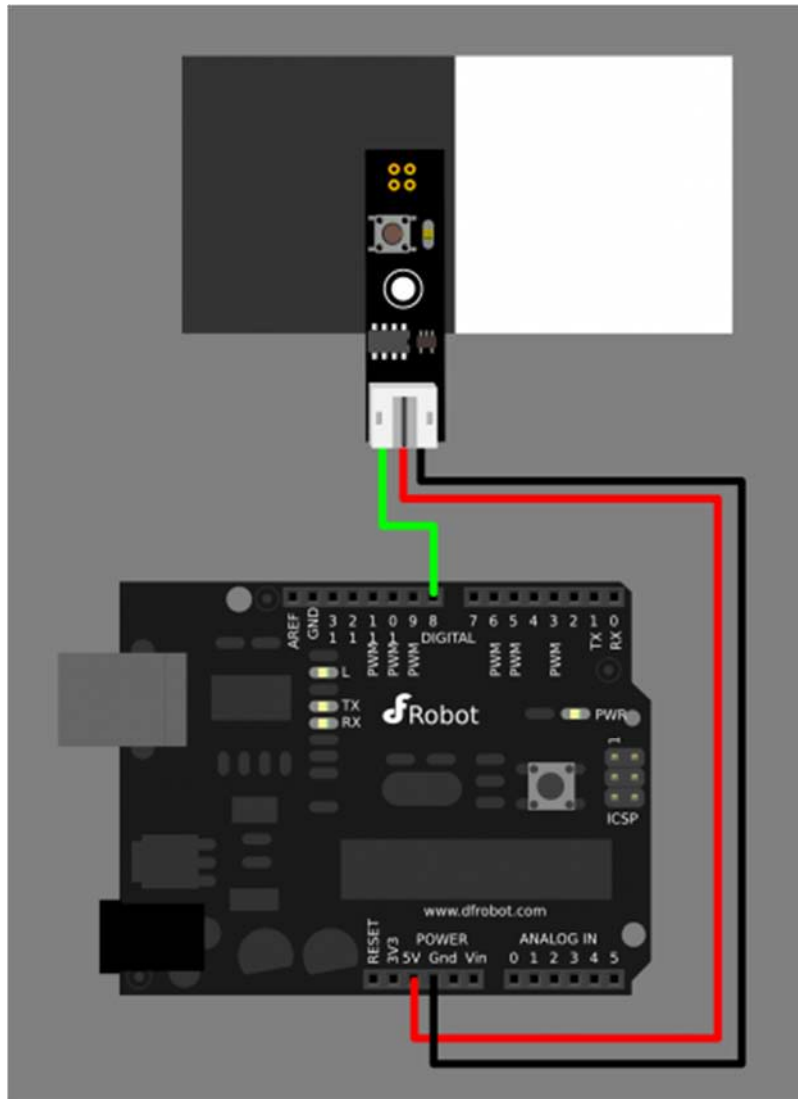
1. Long click the button until the LED slow blinking (which means first color detecting ready).
2. Let the grayscale sensor face to the first color (such as white paper)
3. Meanwhile short click the button and the LED gets dark (which means first color detected).
4. Short click the button and make the LED fast blink (which means second color detecting ready).
5. Let the grayscale sensor face to the second color (such as black paper)
6. Meanwhile short click the button and the LED gets dark (which means second color detected).
7. The first color (such as white paper) will be Logical '1', and the LED becomes bright.
8. The second color (such as black paper) will be Logical '0', and the LED becomes dark.
9. This setting maintains even if the power is off, so for one purpose, one setting is enough.



LED gets dark when facing the black paper



LED gets bright when facing the white paper



Grayscale Sensor Connection Diagram in digital mode

Code Example:

```
int grayscalePin=8;
void setup()
{
  Serial.begin(9600);
  pinMode(grayscalePin, INPUT);
  Serial.println("Smart Grayscale sensor:");
}
void loop()
```

```
{  
  Serial.print("Grayscale:");  
  if(digitalRead( grayscalePin))  
  {  
    Serial.println("White detected");  
  }  
  else  
  {  
    Serial.println("Black detected");  
  }  
  
  delay(500);  
}
```