



Chipsmall Limited consists of a professional team with an average of over 10 year of expertise in the distribution of electronic components. Based in Hongkong, we have already established firm and mutual-benefit business relationships with customers from,Europe,America and south Asia,supplying obsolete and hard-to-find components to meet their specific needs.

With the principle of “Quality Parts,Customers Priority,Honest Operation,and Considerate Service”,our business mainly focus on the distribution of electronic components. Line cards we deal with include Microchip,ALPS,ROHM,Xilinx,Pulse,ON,Everlight and Freescale. Main products comprise IC,Modules,Potentiometer,IC Socket,Relay,Connector.Our parts cover such applications as commercial,industrial, and automotives areas.

We are looking forward to setting up business relationship with you and hope to provide you with the best service and solution. Let us make a better world for our industry!



## Contact us

Tel: +86-755-8981 8866 Fax: +86-755-8427 6832

Email & Skype: info@chipsmall.com Web: www.chipsmall.com

Address: A1208, Overseas Decoration Building, #122 Zhenhua RD., Futian, Shenzhen, China





## URM06-ANALOG Ultrasonic SKU:SEN0152



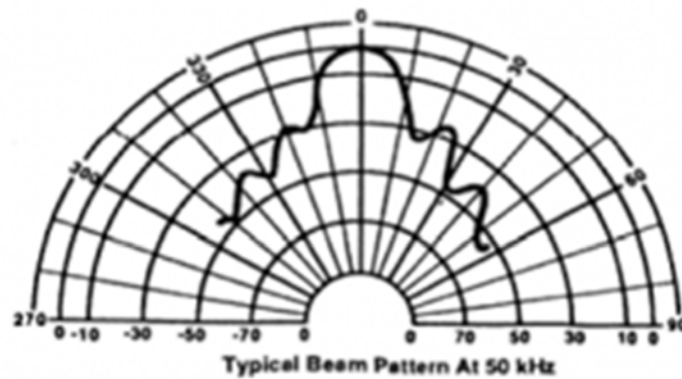
### Introduction

Ultrasonic sensors emit ultrasonic pulses, and by measuring the time of ultrasonic pulse reaches the object and back to the transducer, the distance of sensor from the target object is calculated. They are widely used in detecting displacement, thickness, distance, water level, material level and transparent objects.

The URM06 - Analog Ultrasonic sensor provides very short to long-range detection and ranging from 20cm ~ 10m, comes in a compact, robust PVC housing and matches 35mm electrical pipe mounting. It comes with analog interface and works at high output acoustic power. The ultrasonic sensor detects objects from 20cm to 1000cm and provides range information with 1cm resolution. The URM06 has 15 degree beam angle which has excellent receive sensitivity. And it works best when detecting soft targets. The similar sensors are widely used in professional mobile robot systems such as Pioneer robots.

The URM06 series sensors are the best ultrasonic sensor available in the market regarding its beam angle, sensitivity and accuracy.

# Specification



Note: dB normalized to on-axis response.

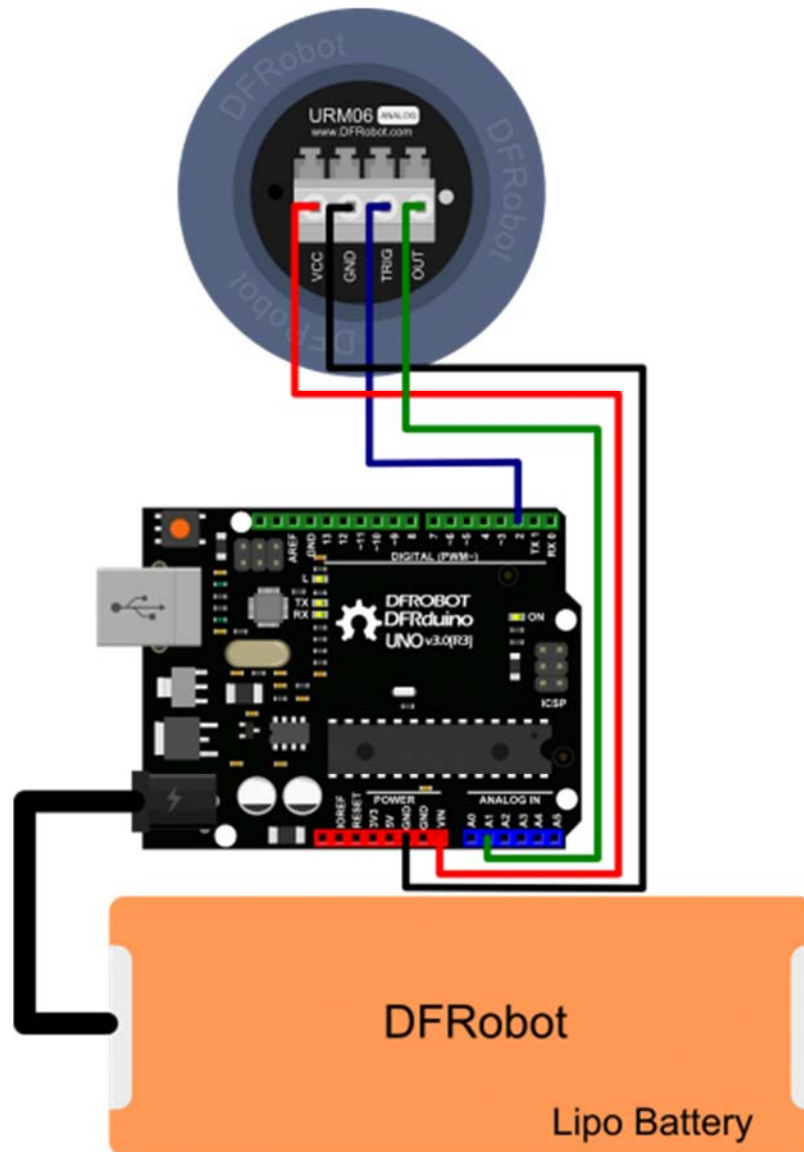
Note: Curves are representative only. Individual responses may differ.

- Working Voltage: 6V-12V (5V is acceptable but not recommended)
- Rated Current: 16mA
- Peak Current: 2A
- Interface: Analog
- Working Frequency: 49.5KHZ
- Working Temperature: -10°C ~ +70°C
- Detecting Angle: 15° (-6dB)
- Detecting Range: 20cm ~ 10m
- Size: 50mm(diameter)\*43mm(length)
- Mounting Thread Diameter: 35mm
- Weight: 45g

# Applications

- robot navigation
- obstacle avoidance
- measuring distance devices
- engineering measurement tools
- industrial control system

## Connection Diagram



Connection Diagram

## Pin Definition

- VCC: 6~12V@Max 2A (5V is acceptable but not recommended)
- GND: Ground
- Trig: Measurement trigger pin - Low level pulse over 50us triggers one distance measurement. Holding this pin LOW will repeats the measurement every 100ms.
- OUT: Analog output pin – 0.33mV stands for 1mm.

## Sample Code

```
#include "Arduino.h"

/*
  Trig: Measurement trigger pin - Low level pulse over 50us triggers one distance measurement.

  Holding this pin LOW will repeats the measurement every 100ms.
*/
#define TRIGGER 2

/*
  OUT: analog output 0.33mV equals 1mm
*/
#define ANALOG 1

void setup()
{
  pinMode(TRIGGER, OUTPUT);
  digitalWrite(TRIGGER, HIGH);
  Serial.begin(9600);
}

void loop()
{
  // generate the pulse to trigger the sensor
  digitalWrite(TRIGGER, LOW);
  delayMicroseconds(50);
  digitalWrite(TRIGGER, HIGH);
  delayMicroseconds(50);

  unsigned int distance = analogRead(ANALOG); //read the analog pin
  distance = (unsigned int)(((unsigned long)distance * 5000)/1024); //change from analog value to voltage
  distance = (unsigned int)((float)distance / 0.33f); //0.33mV equals 1mm
}
```

```
Serial.print("distance:");  
Serial.print(distance);  
Serial.println("mm");  
delay(500);  
}
```