



Chipsmall Limited consists of a professional team with an average of over 10 year of expertise in the distribution of electronic components. Based in Hongkong, we have already established firm and mutual-benefit business relationships with customers from,Europe,America and south Asia,supplying obsolete and hard-to-find components to meet their specific needs.

With the principle of “Quality Parts,Customers Priority,Honest Operation,and Considerate Service”,our business mainly focus on the distribution of electronic components. Line cards we deal with include Microchip,ALPS,ROHM,Xilinx,Pulse,ON,Everlight and Freescale. Main products comprise IC,Modules,Potentiometer,IC Socket,Relay,Connector.Our parts cover such applications as commercial,industrial, and automotives areas.

We are looking forward to setting up business relationship with you and hope to provide you with the best service and solution. Let us make a better world for our industry!



## Contact us

Tel: +86-755-8981 8866 Fax: +86-755-8427 6832

Email & Skype: info@chipsmall.com Web: www.chipsmall.com

Address: A1208, Overseas Decoration Building, #122 Zhenhua RD., Futian, Shenzhen, China



# Positioning ir camera



## Contents

- [1 Introduction](#)
- [2 Specification](#)
- [3 Pinout](#)
- [4 Connection Diagram](#)
- [5 Sample Code](#)
  - [5.1 Instruction](#)
  - [5.2 Arduino Code](#)
  - [5.3 Processing Code](#)

## Introduction

This camera is a small form positioning IR camera, which could track 4 IR objects at the same time. The applications are very various and goes from tracking of robots with IR transmitters for navigation to light barriers, determine the direction where the object is going to.

It is also a flame sensor, which could track heat sources. It will be a very useful sensor to detect the flame position.

Easy to install and to connect. Just four wires, two for power supply and two for I2C.

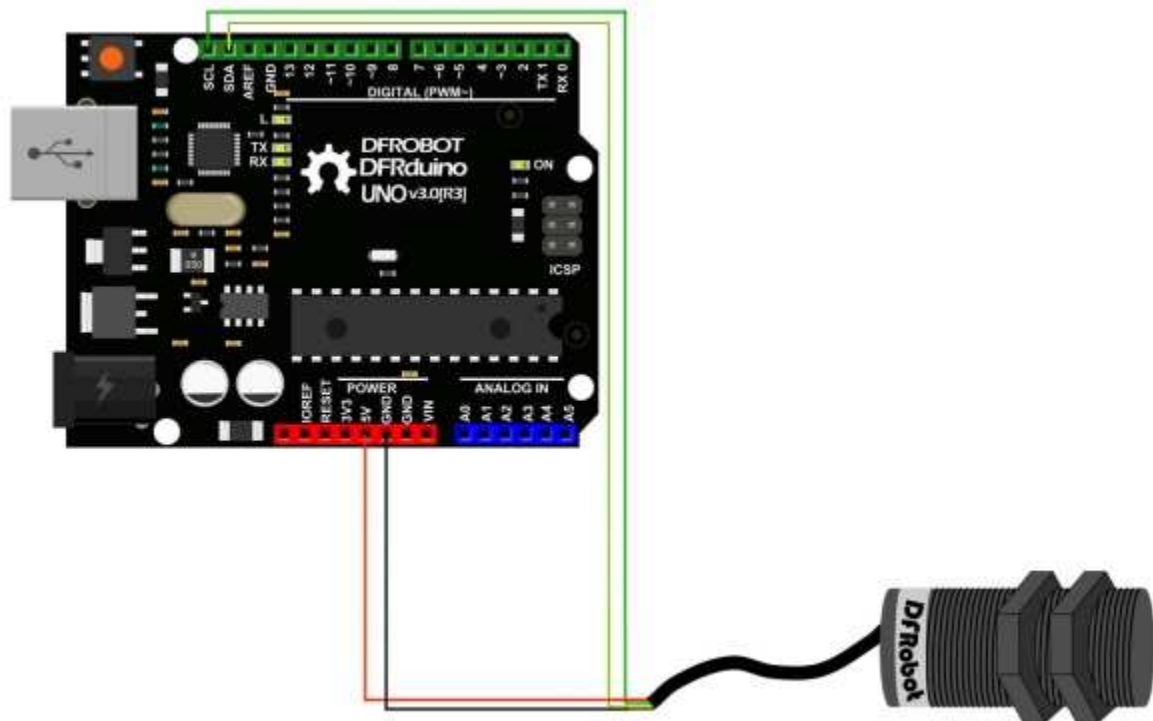
## Specification

- Power consumption requirements: 3.3V/44mA, 5V/48mA
- Detecting distance: 0~3m
- Communication protocol: I2C
- Horizontal detecting angle: 33 degrees
- Vertical detecting angle: 23 degrees
- Resolution is 128x96 pixel, with hardware image processing, which can track four objects (IR emitting or reflecting objects)
- Dimensions: 32 x 16 (cylinder shape)

## Pinout

- Red - VCC+
- Yellow - SDA
- Green - SCL
- Black - GND

## Connection Diagram



## Positioning IR Camera - Connection Diagram

## Sample Code

### Instruction

Once the camera detects a signal, it will display its coordinates on the first position. And others will be empty(returns 1023,1023). If the camera detects several objects, it will arrange them according to the detecting order. If one of them is out of the view, that position will be empty(return 1023,1023). It only supports 4 objects at the same time.

### Arduino Code

```
// Wii Remote IR sensor test sample code by kako http://www.kako.com
// modified output for Wii-BlobTrack program by RobotFreak http://www.letsmakerobots.com/user/1433
// modified for http://DFRobot.com by Lumi, Jan. 2014

#include <Wire.h>

int IRsensorAddress = 0xB0;
//int IRsensorAddress = 0x58;
int slaveAddress;
int ledPin = 13;
boolean ledState = false;
byte data_buf[16];
int i;

int Ix[4];
int Iy[4];
int s;

void Write_2bytes(byte d1, byte d2)
{
    Wire.beginTransmission(slaveAddress);
    Wire.write(d1); Wire.write(d2);
    Wire.endTransmission();
}
```

```

void setup()
{
    slaveAddress = IRsensorAddress >> 1;    // This results in 0x21 as the address to pass to TWI
    Serial.begin(19200);
    pinMode(ledPin, OUTPUT);                // Set the LED pin as output
    Wire.begin();
    // IR sensor initialize
    Write_2bytes(0x30,0x01); delay(10);
    Write_2bytes(0x30,0x08); delay(10);
    Write_2bytes(0x06,0x90); delay(10);
    Write_2bytes(0x08,0xC0); delay(10);
    Write_2bytes(0x1A,0x40); delay(10);
    Write_2bytes(0x33,0x33); delay(10);
    delay(100);
}
void loop()
{
    ledState = !ledState;
    if (ledState) { digitalWrite(ledPin,HIGH); } else { digitalWrite(ledPin,LOW); }

    //IR sensor read
    Wire.beginTransmission(slaveAddress);
    Wire.write(0x36);
    Wire.endTransmission();

    Wire.requestFrom(slaveAddress, 16);      // Request the 2 byte heading (MSB comes first)
    for (i=0;i<16;i++) { data_buf[i]=0; }
    i=0;
    while(Wire.available() && i < 16) {
        data_buf[i] = Wire.read();
        i++;
    }
}

```

```
Ix[0] = data_buf[1];
Iy[0] = data_buf[2];
s     = data_buf[3];
Ix[0] += (s & 0x30) <<4;
Iy[0] += (s & 0xC0) <<2;

Ix[1] = data_buf[4];
Iy[1] = data_buf[5];
s     = data_buf[6];
Ix[1] += (s & 0x30) <<4;
Iy[1] += (s & 0xC0) <<2;

Ix[2] = data_buf[7];
Iy[2] = data_buf[8];
s     = data_buf[9];
Ix[2] += (s & 0x30) <<4;
Iy[2] += (s & 0xC0) <<2;

Ix[3] = data_buf[10];
Iy[3] = data_buf[11];
s     = data_buf[12];
Ix[3] += (s & 0x30) <<4;
Iy[3] += (s & 0xC0) <<2;

for(i=0; i<4; i++)
{
    if (Ix[i] < 1000)
        Serial.print("");
    if (Ix[i] < 100)
        Serial.print("");
    if (Ix[i] < 10)
        Serial.print("");
    Serial.print( int(Ix[i]) );
    Serial.print(",");
}
```

```

    if (Iy[i] < 1000)
        Serial.print("");
    if (Iy[i] < 100)
        Serial.print("");
    if (Iy[i] < 10)
        Serial.print("");
    Serial.print( int(Iy[i]) );
    if (i<3)
        Serial.print(",");
}
Serial.println("");
delay(15);
}

```

## Processing Code

```

// Example by Tom Igoe
// Modified for http://www.DFRobot.com by Lumi, Jan. 2014

/*
   This code should show one colored blob for each detected IR source (max fo
ur) at the relative position to the camera.
*/

import processing.serial.*;

int lf = 10;    // Linefeed in ASCII
String myString = null;
Serial myPort; // The serial port

void setup() {
    // List all the available serial ports
    println(Serial.list());
    // Open the port you are using at the rate you want:

```

```
myPort = new Serial(this, Serial.list()[0], 19200);
myPort.clear();
// Throw out the first reading, in case we started reading
// in the middle of a string from the sender.
myString = myPort.readStringUntil(lf);
myString = null;
size(800,800);
//frameRate(30);
}

void draw() {
  background(77);
  //while (myPort.available() > 0) {
    myString = myPort.readStringUntil(lf);
    if (myString != null) {
      int[] output = int (split(myString, ','));

      println(myString); // display the incoming string

      int xx = output[0];
      int yy = output[1];

      int ww = output[2];
      int zz = output[3];

      int xxx = output[4];
      int yyy = output[5];

      int www = output[6];
      int zzz = output[7];

      ellipseMode(RADIUS); // Set ellipseMode to RADIUS
      fill(255, 0, 0); // Set fill to white
      ellipse(xx, yy, 20, 20);
```



```
ellipseMode(RADIUS); // Set ellipseMode to RADIUS
fill(0, 255, 0); // Set fill to white
ellipse(ww, zz, 20, 20);

ellipseMode(RADIUS); // Set ellipseMode to RADIUS
fill(0, 0, 255); // Set fill to white
ellipse(xxx, yyy, 20, 20);
ellipseMode(RADIUS); // Set ellipseMode to RADIUS
fill(255); // Set fill to white
ellipse(www, zzz, 20, 20);

}

}
```