



Chipsmall Limited consists of a professional team with an average of over 10 year of expertise in the distribution of electronic components. Based in Hongkong, we have already established firm and mutual-benefit business relationships with customers from,Europe,America and south Asia,supplying obsolete and hard-to-find components to meet their specific needs.

With the principle of "Quality Parts,Customers Priority,Honest Operation,and Considerate Service",our business mainly focus on the distribution of electronic components. Line cards we deal with include Microchip,ALPS,ROHM,Xilinx,Pulse,ON,Everlight and Freescale. Main products comprise IC,Modules,Potentiometer,IC Socket,Relay,Connector.Our parts cover such applications as commercial,industrial, and automotives areas.

We are looking forward to setting up business relationship with you and hope to provide you with the best service and solution. Let us make a better world for our industry!



## Contact us

Tel: +86-755-8981 8866 Fax: +86-755-8427 6832

Email & Skype: info@chipsmall.com Web: www.chipsmall.com

Address: A1208, Overseas Decoration Building, #122 Zhenhua RD., Futian, Shenzhen, China



## Hall sensor SKU:SEN0185

---



### Contents

- [1 Introduction](#)
- [2 Specification](#)
- [3 Pinout](#)
- [4 Connection Diagram](#)
- [5 Sample Code](#)

### Introduction

What's the best way to detect the magnet? Use another magnet. But it's not sensitive enough. You have to feel it by yourself. Right. This Hall sensor knows whether there is a magnetic object nearby or not. And it correctly tells you through digital output. See below picture for a quick demo!

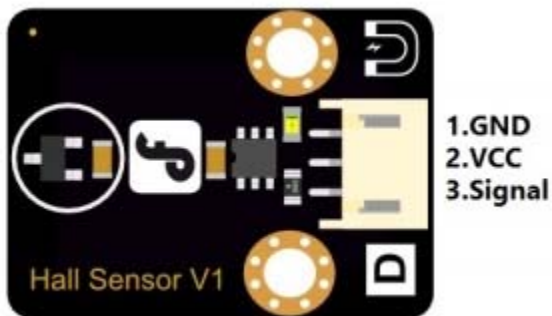
Note: It's an omnipolar magnet detector so that it can not tell two polarities apart.

## Specification

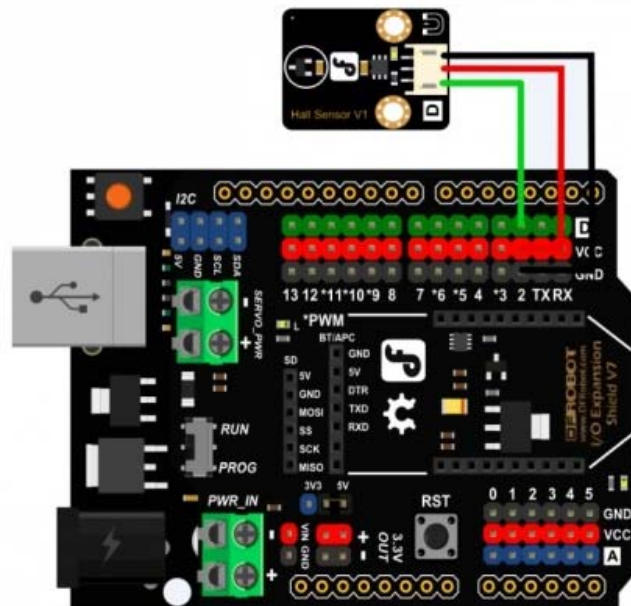
- Supply Voltage: 3.3V to 5V
- Indicator LED on board
- Interface: Digital
- Size:22x30mm

## Pinout

1. GND
2. VCC
3. Signal



## Connection Diagram



## Digital Hall sensor Diagram

## Sample Code

```
int ledPin = 13;           // choose the pin for the LED
int inputPin = 2;         // choose the input pin
int val = 0;              // variable for reading the pin status
void setup() {
  pinMode(ledPin, OUTPUT); // declare LED as output
  pinMode(inputPin, INPUT); // declare pushbutton as input
}
void loop(){
  val = digitalRead(inputPin); // read input value
  if (val == HIGH) {           // check if the input is HIGH
    digitalWrite(ledPin, LOW); // turn LED OFF
  } else {
    digitalWrite(ledPin, HIGH); // turn LED ON
  }
}
}
```