



Chipsmall Limited consists of a professional team with an average of over 10 year of expertise in the distribution of electronic components. Based in Hongkong, we have already established firm and mutual-benefit business relationships with customers from,Europe,America and south Asia,supplying obsolete and hard-to-find components to meet their specific needs.

With the principle of “Quality Parts,Customers Priority,Honest Operation,and Considerate Service”,our business mainly focus on the distribution of electronic components. Line cards we deal with include Microchip,ALPS,ROHM,Xilinx,Pulse,ON,Everlight and Freescale. Main products comprise IC,Modules,Potentiometer,IC Socket,Relay,Connector.Our parts cover such applications as commercial,industrial, and automotives areas.

We are looking forward to setting up business relationship with you and hope to provide you with the best service and solution. Let us make a better world for our industry!



Contact us

Tel: +86-755-8981 8866 Fax: +86-755-8427 6832

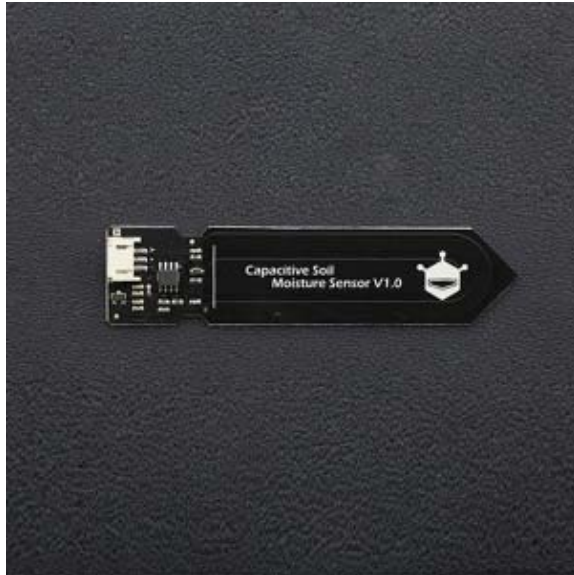
Email & Skype: info@chipsmall.com Web: www.chipsmall.com

Address: A1208, Overseas Decoration Building, #122 Zhenhua RD., Futian, Shenzhen, China





Capacitive Soil Moisture Sensor SKU:SEN0193



Capacitive Soil Moisture Sensor

Contents

- [1 Introduction](#)
- [2 Specification](#)
- [3 Tutorial](#)
 - [3.1 Requirements](#)
 - [3.2 Connection Diagram](#)
 - [3.3 Calibration Code](#)
 - [3.4 Calibration](#)
 - [3.4.1 Calibration Range](#)
 - [3.4.2 Section Settings](#)
 - [3.5 Test Code](#)
- [4 FAQ](#)

Introduction

Our soil moisture sensor measures soil moisture levels by capacitive sensing rather than resistive sensing like other sensors on the market. It is made of corrosion resistant material which gives it an excellent service life.

Insert it in to the soil around your plants and impress your friends with real-time soil moisture data! This module includes an on-board voltage regulator which gives it an operating voltage range of 3.3 ~ 5.5V. It is perfect for low-voltage MCUs, both 3.3V and 5V. For compatibility with a Raspberry Pi it will need an ADC converter.

This sensor is compatible with our 3-pin "Gravity" interface, which can be directly connected to the Gravity I/O expansion shield.

Specification

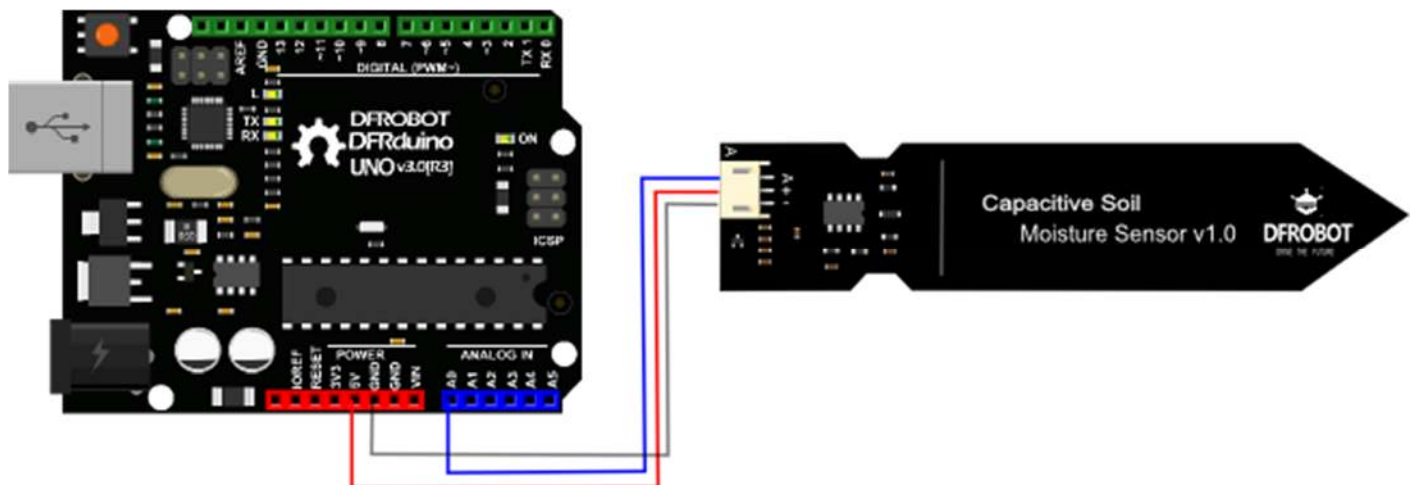
- Operating Voltage: 3.3 ~ 5.5 VDC
- Output Voltage: 0 ~ 3.0VDC
- Operating Current: 5mA
- Interface: PH2.0-3P
- Dimensions: 3.86 x 0.905 inches (L x W)
- Weight: 15g

Tutorial

Requirements

- **Hardware**
UNO x1
Capacitive Soil Moisture Sensor x1
Jumper Cable x3
- **Software**
Arduino IDE V1.6.5 [Click to Download Arduino IDE](#)

Connection Diagram

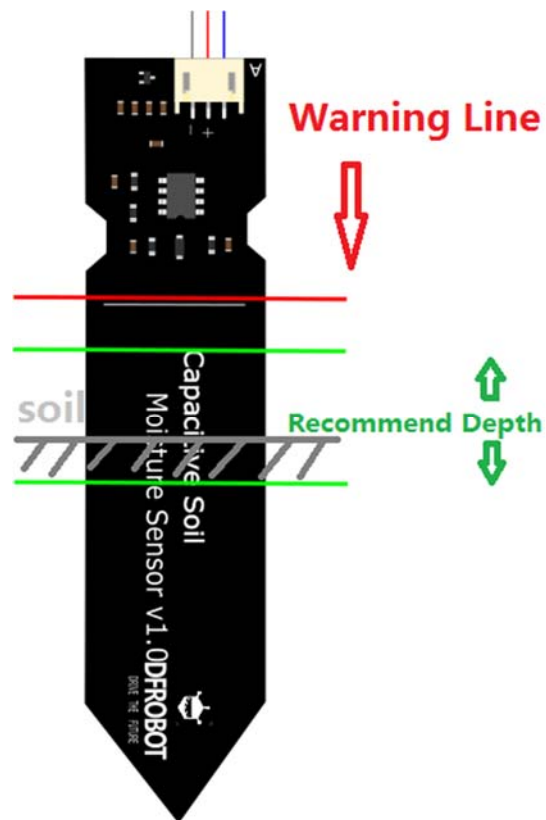


Calibration Code

```
void setup() {  
  Serial.begin(9600); // open serial port, set the baud rate as 9600 bps  
}  
void loop() {  
  int val;  
  val = analogRead(0); //connect sensor to Analog 0  
  Serial.print(val); //print the value to serial port  
  delay(100);  
}
```

Calibration

Calibration Range



1. Open the serial port monitor and set the baud rate to 9600
2. Record the sensor value when the probe is exposed to the air as "Value 1". This is the boundary value of dry soil "Humidity: 0%RH"
3. Take a cup of water and insert the probe into it no further than the red line in the diagram
4. Record the sensor value when the probe is exposed to the water as "Value 2". This is the boundary value of moist soil "Humidity: 100%RH"



The components on this board are NOT waterproof, do not expose to moisture further than the red line. (If you want to protect components from the elements, try using a length of wide heat shrink tubing around the upper-section of the board.) There is an inverse ratio between the sensor output value and soil moisture.

Section Settings

The final output value is affected by probe insertion depth and how tight the soil packed around it is. We regard "value_1" as dry soil and "value_2" as soaked soil. This is the sensor detection range.

For example: Value_1 = 520; Value_2 = 260.

The range will be divided into three sections: dry, wet, water. Their related values are:

- Dry: (520 430]
- Wet: (430 350]
- Water: (350 260]

Test Code

```
/******  
This example reads Capacitive Soil Moisture Sensor.  
  
Created 2015-10-21  
By berinie Chen <bernie.chen@dfrobot.com>  
  
GNU Lesser General Public License.  
See <http://www.gnu.org/licenses/> for details.  
All above must be included in any redistribution  
*****/
```

```

/*****Notice and Trouble shooting*****/

1.Connection and Diagram can be found here: https://www.dfrobot.com/wiki/index.php?title=Capacitive\_Soil\_Moisture\_Sensor\_SKU:SEN0193

2.This code is tested on Arduino Uno.

3.Sensor is connect to Analog 0 port.

*****/

const int AirValue = 520; //you need to replace this value with Value_1
const int WaterValue = 260; //you need to replace this value with Value_2
int intervals = (AirValue - WaterValue)/3;
int soilMoistureValue = 0;
void setup() {
  Serial.begin(9600); // open serial port, set the baud rate to 9600 bps
}
void loop() {
  soilMoistureValue = analogRead(A0); //put Sensor insert into soil
  if(soilMoistureValue > WaterValue && soilMoistureValue < (WaterValue + intervals))
  {
    Serial.println("Very Wet");
  }
  else if(soilMoistureValue > (WaterValue + intervals) && soilMoistureValue < (AirValue - intervals))
  {
    Serial.println("Wet");
  }
  else if(soilMoistureValue < AirValue && soilMoistureValue > (AirValue - intervals))
  {
    Serial.println("Dry");
  }
  delay(100);
}

```

FAQ

There are no questions about this product yet.

For any questions/advice/cool ideas to share with us, please visit [DFRobot Forum](#).