



Chipsmall Limited consists of a professional team with an average of over 10 year of expertise in the distribution of electronic components. Based in Hongkong, we have already established firm and mutual-benefit business relationships with customers from,Europe,America and south Asia,supplying obsolete and hard-to-find components to meet their specific needs.

With the principle of "Quality Parts,Customers Priority,Honest Operation,and Considerate Service",our business mainly focus on the distribution of electronic components. Line cards we deal with include Microchip,ALPS,ROHM,Xilinx,Pulse,ON,Everlight and Freescale. Main products comprise IC,Modules,Potentiometer,IC Socket,Relay,Connector.Our parts cover such applications as commercial,industrial, and automotives areas.

We are looking forward to setting up business relationship with you and hope to provide you with the best service and solution. Let us make a better world for our industry!



Contact us

Tel: +86-755-8981 8866 Fax: +86-755-8427 6832

Email & Skype: info@chipsmall.com Web: www.chipsmall.com

Address: A1208, Overseas Decoration Building, #122 Zhenhua RD., Futian, Shenzhen, China



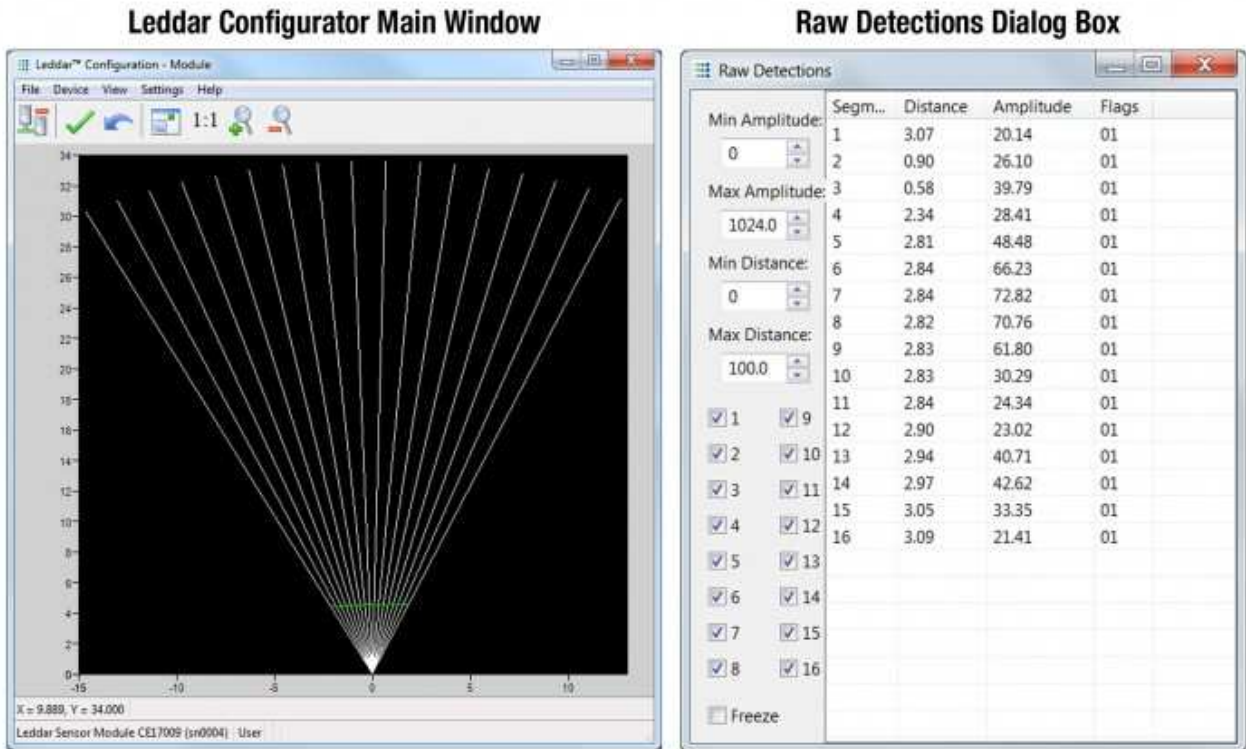


Leddar M16 Sensor Module (95 degree beam)

SKU:SEN0201

The Leddar M16 Sensor Module is an advanced sensing solution that combines 16 independent active elements into a single sensor, resulting in rapid, continuous and accurate detection and ranging—including lateral discrimination—in the entire wide beam, without any moving parts.

The versatile Leddar M16 module can be easily integrated to add cost-effective, smart sensing capabilities to almost any application, enabling developers and integrators to make the most of this cutting-edge technology. Various beam options, creating different fields of view ranging from 9 to 95 degrees, are available to provide the best possible match to your requirements.



The modules come with the Leddar Enabler SDK, which provides a user-friendly application programming interface (API) with .Net and C libraries, complete with code examples. Sample code for RS-485/MODBUS for both Windows and Linux, as well as LabVIEW and MATLAB integration examples are also provided.

Benefits:

- Proven reliability, even in harsh conditions
- Immune to ambient light
- No moving parts, for ultimate robustness
- Easy to integrate, includes Leddar Enabler SDK
- Low power consumption
- Best cost/performance ratio

FEATURES

- 16 independent segments with simultaneous acquisition and lateral discrimination capabilities
- 90 to 95o beam options, for optimized field of view
- 0 to 100 meter detection range (325 ft.)
- Rapid data acquisition time, up to 50 Hz

SPECIFICATION

- Beams: 95 degree
- Detection range: 0 to 100 meters (325 ft.)
- Accuracy: 5 cm
- Data refresh rate: 6.25 Hz to 100 Hz
- Operating temperature range: -40C to + 85C
- Meets IEC 62471 2006 criteria: Exempt lamp classification
- Distance precision: 6 mm
- Distance resolution: 10 mm
- Power consumption: 4 W
- Interfaces: USB, RS-485, CAN, UART
- Wavelength: 940 nm
- Power supply: 12 or 24 VDC (jumper - selectable)
- Dimensions: 104 x 66 x 48 (mm)/ 4.09 x 2.6 x 1.89 (inches)
- Weight: 180 g
-

SHIPPING LIST

- Leddar M16 Sensor Module (95 degree beam) x1
-

