



Chipsmall Limited consists of a professional team with an average of over 10 year of expertise in the distribution of electronic components. Based in Hongkong, we have already established firm and mutual-benefit business relationships with customers from,Europe,America and south Asia,supplying obsolete and hard-to-find components to meet their specific needs.

With the principle of "Quality Parts,Customers Priority,Honest Operation,and Considerate Service",our business mainly focus on the distribution of electronic components. Line cards we deal with include Microchip,ALPS,ROHM,Xilinx,Pulse,ON,Everlight and Freescale. Main products comprise IC,Modules,Potentiometer,IC Socket,Relay,Connector.Our parts cover such applications as commercial,industrial, and automotives areas.

We are looking forward to setting up business relationship with you and hope to provide you with the best service and solution. Let us make a better world for our industry!



## Contact us

Tel: +86-755-8981 8866 Fax: +86-755-8427 6832

Email & Skype: info@chipsmall.com Web: www.chipsmall.com

Address: A1208, Overseas Decoration Building, #122 Zhenhua RD., Futian, Shenzhen, China





# Gravity: Analog Infrared CO2 Sensor For Arduino

## SKU: SEN0219



### Introduction

DFRobot released its latest high-precision analog infrared CO2 sensor. The effectively measuring range is from 0 to 5000ppm. This sensor is based on non-dispersive infrared (NDIR) technology and has good selectivity and oxygen-free dependency. Besides, its service life could up to 5 years! It integrates temperature compensation and support DAC output. Most importantly, the product is easy to use; it is compatible with all types of microcontrollers with ADC function.

In addition, this product is a high-performance sensor that combines technology of mature infrared absorption gas detection with precision optical circuit design as well as sophisticated circuit design. It has characteristics such as high sensitivity, high resolution, low power consumption, fast response, anti-water vapor interference, no poisoning, high stability and long life.

This sensor is able to directly compatible with the DFRobot Arduino IO expansion board thanks to its external DFRobot Gravity interface. This character simplify the use of the sensor as it is plug and play and no need additional wiring.

This product could be widely used in HVAC, indoor air quality monitoring, industrial process and security protection monitoring, agriculture and animal husbandry production process monitoring.

## Feature

- Waterproof and anti-corrosion
- High sensitivity
- Low power consumption
- Excellent stability
- Temperature compensation
- Excellent linear output
- High cycle life
- Anti-water vapor interference
- No poisoning

## Specification

- Gas Detection: Carbon Dioxide (CO<sub>2</sub>)
- Operating Voltage: 4.5 ~ 5.5V DC
- Average Current: <60mA @ 5V
- Peak Current: 150mA @ 5V
- Output Signal: Analog output (0.4 ~ 2V)
- Measuring Range: 0 ~ 5000ppm
- Accuracy:  $\pm$  (50ppm + 3% reading)
- Preheating Time: 3min
- Response Time: 120s
- Operating Temperature: 0 ~ 50 °C
- Operating Humidity: 0 ~ 95% RH (no condensation)
- Service Life: >5 years
- Size: 37mm \* 69mm

## Board Overview



SEN0219 CO2 Sensor

Num	Label	Description
1	Signal	Analog Output (0.4~2V)
2	VCC	VCC (4.5~5.5V)
3	GND	GND

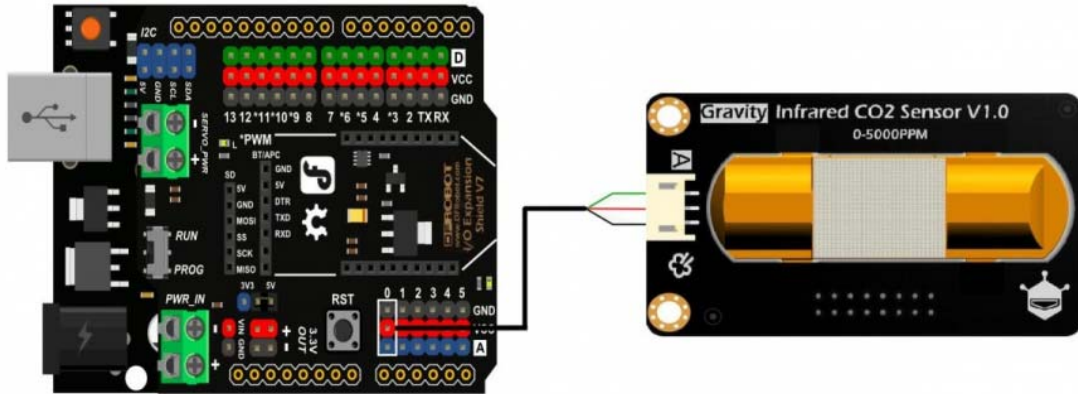
# Tutorial

In this tutorial, we'll show you how to use DFRobot Infrared Sensor within 5 minutes.

## Requirements

- **Hardware**  
DFRduino UNO x 1  
DFRobot Gravity: Infrared CO2 Sensor  
Gravity: IO Expansion Shield for Arduino V7.1
- **Software**  
Arduino IDE [Click to Download Arduino IDE from Arduino®](https://www.arduino.cc/en/Main/Software%7C)  
<https://www.arduino.cc/en/Main/Software%7C>

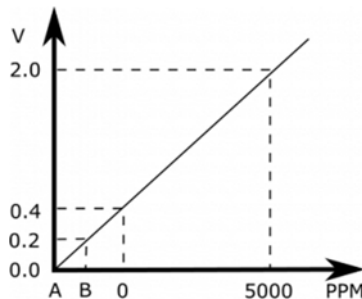
## Connection Diagram



## SEN0219\_Connection

## Data Analysis

When the IR CO2 sensor get 5V power supply, it will output 0.4~2V analog value, corresponding to 0~5000 ppm; And when the sensor finds faults during the self-checking process, it will output 0V.



A: Fault  
B: Preheat

## Sample Code

```
/*
*****
* Infrared CO2 Sensor0-5000ppm
* *****
* This example The sensors detect CO2
*
* @author lg.gang(lg.gang@qq.com)
* @version V1.0
* @date 2016-7-6
*
* GNU Lesser General Public License.
* See <http://www.gnu.org/licenses/> for details.
* All above must be included in any redistribution
* *****/
int sensorIn = A0;

void setup(){
  Serial.begin(9600);
  // Set the default voltage of the reference voltage
  analogReference(DEFAULT);
}

void loop(){
  //Read voltage
  int sensorValue = analogRead(sensorIn);

  // The analog signal is converted to a voltage
  float voltage = sensorValue*(5000/1024.0);
  if(voltage == 0)
  {
    Serial.println("Fault");
  }
  else if(voltage < 400)
  {
```

```

    Serial.println("preheating");
}
else
{
    int voltage_diference=voltage-400;
    float concentration=voltage_diference*50.0/16.0;
    // Print Voltage
    Serial.print("voltage:");
    Serial.print(voltage);
    Serial.println("mv");
    //Print CO2 concentration
    Serial.print(concentration);
    Serial.println("ppm");
}
delay(100);
}

```

## Expected Results

Open your IDE serial monitor and wait for 3 minutes (preheat process), then you'll see the final data. (Indoor Temperature: 30°C)

