



Chipsmall Limited consists of a professional team with an average of over 10 year of expertise in the distribution of electronic components. Based in Hongkong, we have already established firm and mutual-benefit business relationships with customers from,Europe,America and south Asia,supplying obsolete and hard-to-find components to meet their specific needs.

With the principle of “Quality Parts,Customers Priority,Honest Operation,and Considerate Service”,our business mainly focus on the distribution of electronic components. Line cards we deal with include Microchip,ALPS,ROHM,Xilinx,Pulse,ON,Everlight and Freescale. Main products comprise IC,Modules,Potentiometer,IC Socket,Relay,Connector.Our parts cover such applications as commercial,industrial, and automotives areas.

We are looking forward to setting up business relationship with you and hope to provide you with the best service and solution. Let us make a better world for our industry!



Contact us

Tel: +86-755-8981 8866 Fax: +86-755-8427 6832

Email & Skype: info@chipsmall.com Web: www.chipsmall.com

Address: A1208, Overseas Decoration Building, #122 Zhenhua RD., Futian, Shenzhen, China





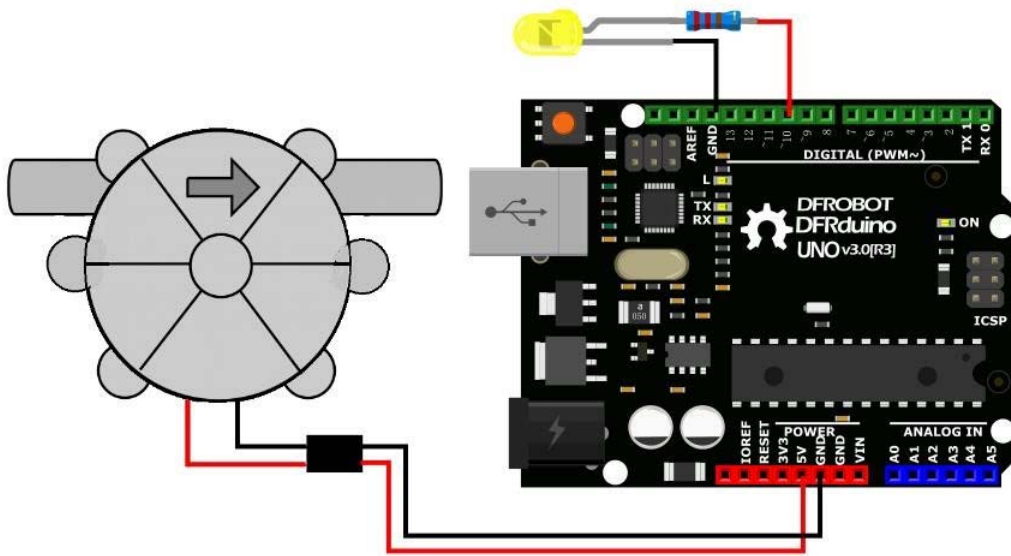
Water Turbine Generator (5VDC)

SKU:SEN0229



INTRODUCTION

This is a water turbine generator, 5V DC output, which can be directly used as Arduino power supply. Eco-friendly energy, you can make it work together with our lithium battery charger, working as a backup energy. This water turbine generator can be used in various hydro power generator application, such as smart faucets, sensing faucets, shower room lighting systems etc. The module comes with regulated power output, which provides standard 5V DC output. The maximum output current is up to 150Ma which is enough for most light application.



SPECIFICATION

- Working Pressure: 0 ~ 1.0 Mpa
- Tested Pressure: 0.6 MPa
- Temperature Range: 0 ~ 80 °C (maximum permissible ambient temperature 100 °C max; 30 min)
- Storage Temperature: -25 ~ 65 ° C
- Flow range: 2.5 ~ 20L / min (pressure 0.05-0.2mpa)
- Output Voltage: DC 5V (water flow 4L / min)
- Output Current: 0-150mA
- Output Voltage Starting Flow: DC 2.5V water flow 3.5L / min