



Chipsmall Limited consists of a professional team with an average of over 10 year of expertise in the distribution of electronic components. Based in Hongkong, we have already established firm and mutual-benefit business relationships with customers from,Europe,America and south Asia,supplying obsolete and hard-to-find components to meet their specific needs.

With the principle of “Quality Parts,Customers Priority,Honest Operation,and Considerate Service”,our business mainly focus on the distribution of electronic components. Line cards we deal with include Microchip,ALPS,ROHM,Xilinx,Pulse,ON,Everlight and Freescale. Main products comprise IC,Modules,Potentiometer,IC Socket,Relay,Connector.Our parts cover such applications as commercial,industrial, and automotives areas.

We are looking forward to setting up business relationship with you and hope to provide you with the best service and solution. Let us make a better world for our industry!



Contact us

Tel: +86-755-8981 8866 Fax: +86-755-8427 6832

Email & Skype: info@chipsmall.com Web: www.chipsmall.com

Address: A1208, Overseas Decoration Building, #122 Zhenhua RD., Futian, Shenzhen, China



Gravity: Water Pressure Sensor

SKU: SEN0257



Gravity: Analog Water Pressure Sensor SKU: SEN0257

This is a water pressure sensor that adopts DFRobot Gravity 3-pin interface. It supports standard 5V voltage input and 0.5~4.5V linear voltage output. It is compatible with multiple Arduino controllers. Coordinate with a DFRobot Gravity IO Expansion Shield, the water pressure sensor can be plugged into an Arduino board, wiring-free. Put it with a Solenoid Valve , a Water Turbine Generator and other sensors, you can build a smart water control system. Briefly speaking, this water pressure sensor is a stethoscope to a water pipe. It will help you to diagnose whether there is water, how strong the water pressure is. It can be widely applied to smart home control systems (SCS), Internet of Things (IoT) and device detection.

Features

- Support water pressure detection of living environmental water systems, such as houses, gardens and farms.
- Support water pressure detection of outdoor environment, such as rivers, lakes and sea.
- Support water pressure detection of tanks.
- Support liquid level detection in special situation.

Specification

- Medium: liquid/gas without corrosion
- Wiring: Gravity-3Pin (Signal-VCC-GND)
- Pressure Measurement Range: 0~1.6 Mpa
- Input Voltage: +5 VDC
- Output Voltage: 0.5~4.5 V
- Measurement Accuracy: 0.5%~1%FS (0.5%, 0~55°C)
- Threadably: G1/4
- Adapter: G1/2 to G1/4
- Waterproof Level: IP68
- Operating Temperature: -20~85°C
- Response Time: <2.0 ms
- Quiescent Current: 2.8 mA
- Normal Operating Pressure: ≤2.0 Mpa
- Damaged Pressure: ≥3.0 Mpa
- Service Life: ≥10'000'000 times (10 million)

PinOut



PinOut-Water Pressure Sensor

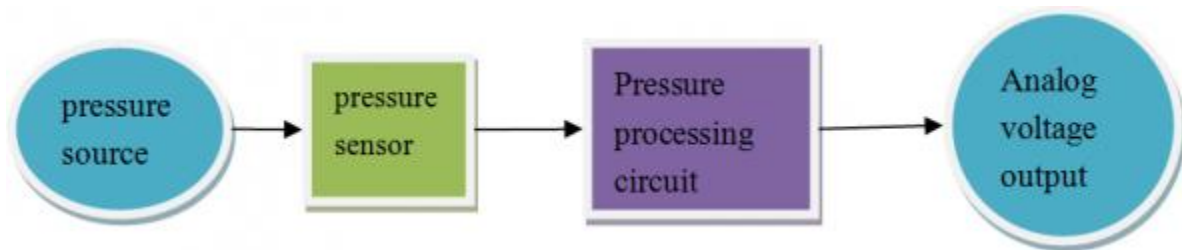
Label	Name	Description
Yellow	Signal(Output:0.5~4.5V)	Analog Signal
Red	VCC(5VDC)	+
Black	GND	-

Input & Output

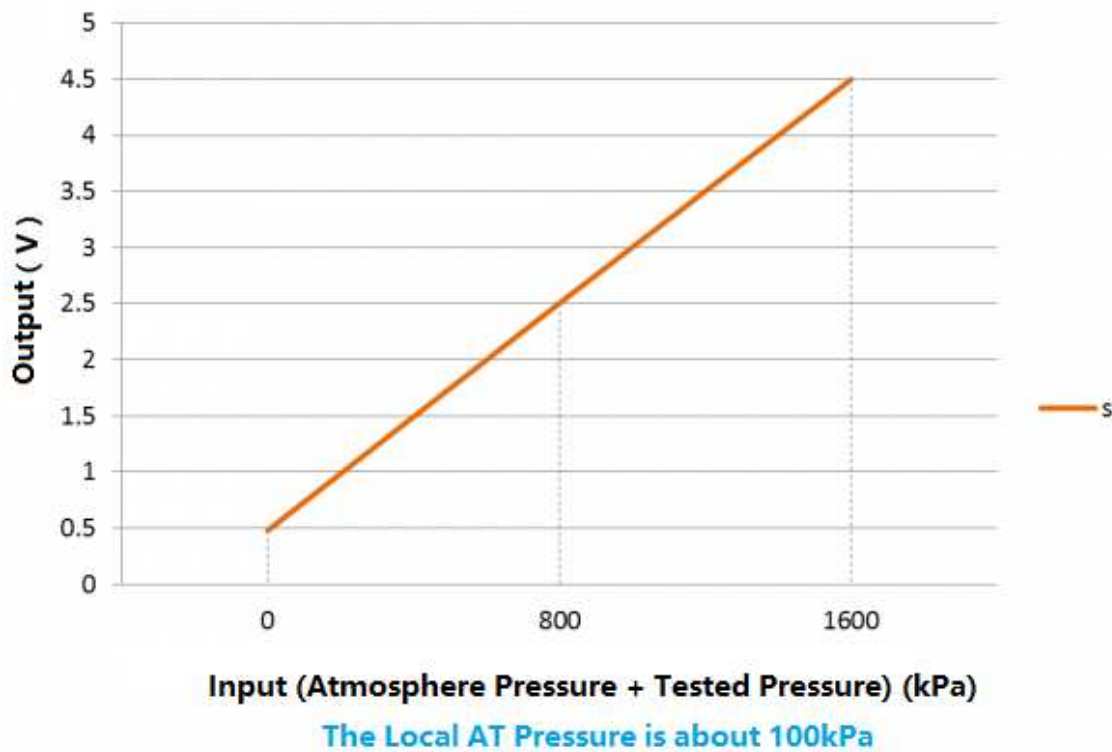
The monocrystalline silicon is one interior material of the sensor. When monocrystalline silicon material suffers force, it makes an infinitesimal change and an electronic level change of internal atom structure, which will also lead to a great change in resistivity (Factor H Mutation), so as the resistance. This physical effect is piezoresistive effect.

Based on the piezoresistive effect, a strain gauge is also a work of IC (integrated circuit) engineering technology. Its production process contains doping, diffusion and a crystal orientation of the substrate. A strain gauge makes a Wheatstone Bridge. Taking advantage of elasticity properties of special silicon material and heterosexual micro-machining the same silicon material in different directions, then a diffused silicon sensor comes into being. The sensor is force-sensitive and mechanical-electrical detective.

Equipped with an amplify circuit and other parts in need, enable the circuit to output a standard signal, the diffused silicon sensor makes a pressure transmitter.



Signal Production Process



Signal Input & Output

Tutorial

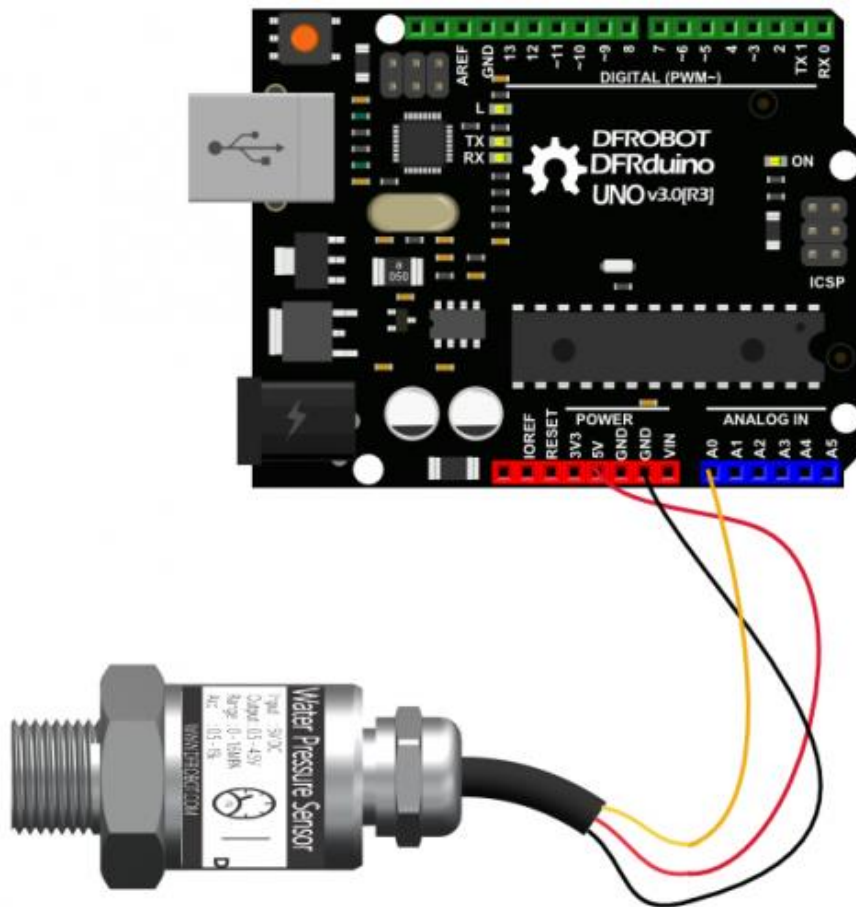
In this section, we'll show the basic sensor usage and a simple demo about pressure detector.

Demo: Read Water Pressure Value

Requirements

- Hardware
DFRduino UNO R3 (or similar) x 1
Gravity: Analog Water Pressure Sensor
Dupont wires
- Software
Arduino IDE (Version requirements: V1.6.+), [click to Download Arduino IDE from Arduino®](#)

Connection Diagram(Arduino)



Analog Module Connection Diagram

Sample Code

Read Data by Serial Port.

```

/*****
    Water pressure sensor demo(Computer serial port)
    - Obtain the water pressure through the output voltage
      of the sensor.
*****/

/*****
    Water Sensor Key Parameter
    - Parts No.:KY-3-5
    - Sensing range: 0 - 1.6 MPa
    - Input Voltage: 5VDC
    - Output Voltage: 0.5 - 4.5 VDC
      (Linearly corresponding to 0 - 1.6 MPa)
    - Accuracy: 0.5% - 1% FS
*****/

/*****
    Water Sensor Calibration

    The output voltage offset of the sensor is 0.5V (nominal).
    However, due to the zero-drifting of the internal circuit, the
    no-load output voltage is not exactly 0.5V. Calibration needs to
    be carried out as follow.

    Calibration: connect the 3 pin wire to the Arduino UNO (VCC, GND and Signal)
    without connecting the sensor to the water pipe and run the program
    for once. Mark down the LOWEST voltage value through the serial
    monitor and revise the "OffSet" value to complete the calibration.

    After the calibration the sensor is ready for measuring!
*****/
```

```
const float  Offset = 0.483 ;

float V, P;

void setup()
{
  Serial.begin(9600);          // open serial port, set the baud rate to 9600 b
  ps
  Serial.println("** Water pressure sensor demo **/");
}
void loop()
{
  //Connect sensor to Analog 0
  V = analogRead(0) * 5.00 / 1024;    //Sensor output voltage
  P = (V - Offset) * 400;            //Calculate water pressure

  Serial.print("Voltage:");
  Serial.print(V, 3);
  Serial.println("V");

  Serial.print(" Pressure:");
  Serial.print(P, 1);
  Serial.println(" KPa");
  Serial.println();

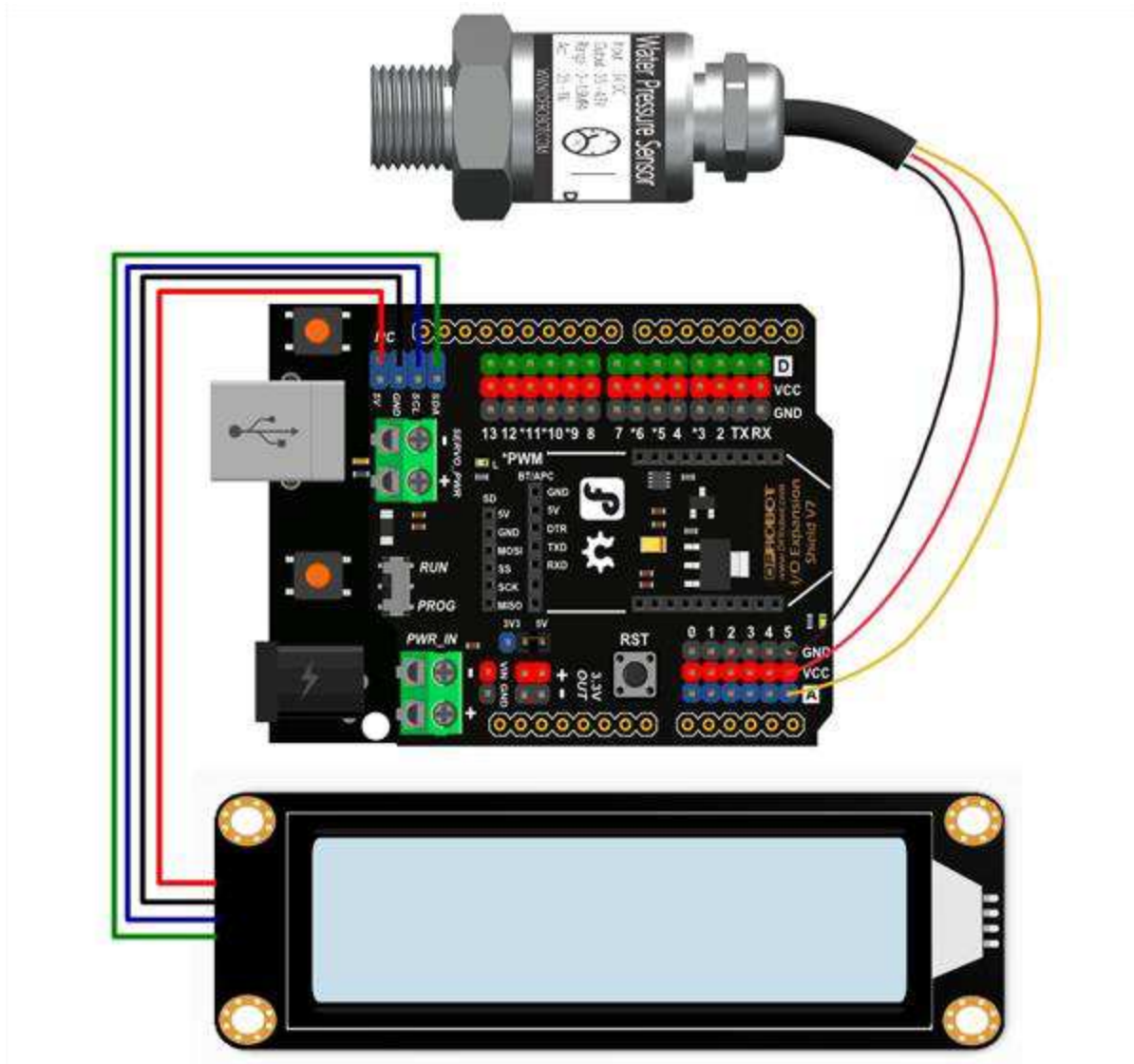
  delay(500);
}
```

Demo: DIY a Simple Water Pressure Detector

Requirements

- Hardware
 - DFRduino UNO R3 (or similar) x 1
 - DFRobot Gravity IO Expansion Shield x1
 - Gravity: I2C 16x2 Arduino LCD with RGB Backlight Display
 - 7.4V 2500MA Lithium Battery x1
 - Dupont wires
- Software
 - Arduino IDE (Version requirements: V1.6.+), click to [Download Arduino IDE from Arduino®](#)

Connection Diagram



Water Pressure Detector

Sample Code

Please download the LCD library: [DFRobot RGB LCD. How to install Libraries in Arduino IDE](#)

Read Data by LCD1602 Display.

```

/*****

  Water pressure sensor demoB(LCD1602)

  - Obtain the water pressure through the output voltage
    of the sensor.

*****/

/*****

  Water Sensor Key Parameter

  - Parts No.:KY-3-5
  - Sensing range: 0 - 1.6 MPa
  - Input Voltage: 5VDC
  - Output Voltage: 0.5 - 4.5 VDC
    (Linearly corresponding to 0 - 1.6 MPa)
  - Accuracy: 0.5% - 1% FS

*****/

/*****

  Water Sensor Calibration

  The output voltage offset of the sensor is 0.5V (nominal).
  However, due to the zero-drifting of the internal circuit, the
  no-load output voltage is not exactly 0.5V. Calibration needs to
  be carried out as follow.

  Calibration: connect the 3 pin wire to the Arduino UNO (VCC, GND and Signal)
  without connecting the sensor to the water pipe and run the program
  for once. Mark down the LOWEST voltage value through the serial
  monitor and revise the "OffSet" value to complete the calibration.

  After the calibration the sensor is ready for measuring!

*****/
```

```

#include <Wire.h>
#include <DFRobot_RGBLCD.h> //LCD header file
const float OffSet = 0.483 ;
float V;
int P;
unsigned int lcd_r = 0, lcd_g = 0, lcd_b = 0;
unsigned long delaytime = 0, lighttime = 0;

DFRobot_RGBLCD lcd(16, 2);
void setup()
{lcd.init();
  delay(5000);
  Serial.begin(115200);
  Serial.println("hello start");
  lighttime = millis();
  lcd.setCursor(0, 0);
  lcd.print("Water Pressure:");
  lcd.setRGB(255, 255, 000);
}
void loop() {
  lcd_r = random(256);
  delayMicroseconds(10);
  lcd_g = random(256);
  delayMicroseconds(10);
  lcd_b = random(256);
  if (millis() - lighttime > 3000)
  {
    lcd.setRGB lcd_r, lcd_g, lcd_b);
    lighttime = millis();
  }
  //delay(100);

  V = analogRead(0)* 5.00 / 1024; //Sensor output volta
ge

```

```
P = (V - OffSet) * 400*10; //Calculate water pre
ssure
lcd.setCursor(3, 1);

lcd.print( P/ 10000% 10); //LCD display
lcd.print( P/ 1000% 10);
lcd.print( P/ 100 % 10);
lcd.print( P/ 10 % 10);
lcd.print('.');
lcd.print( P % 10);
lcd.print(" kPa");

}
```

Expected Results



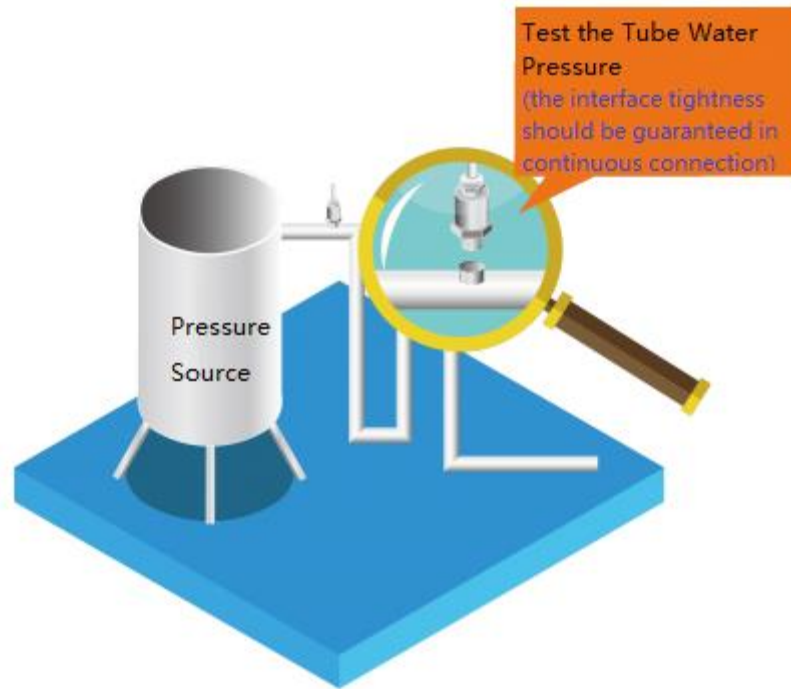
Water Pressure Display

Installation

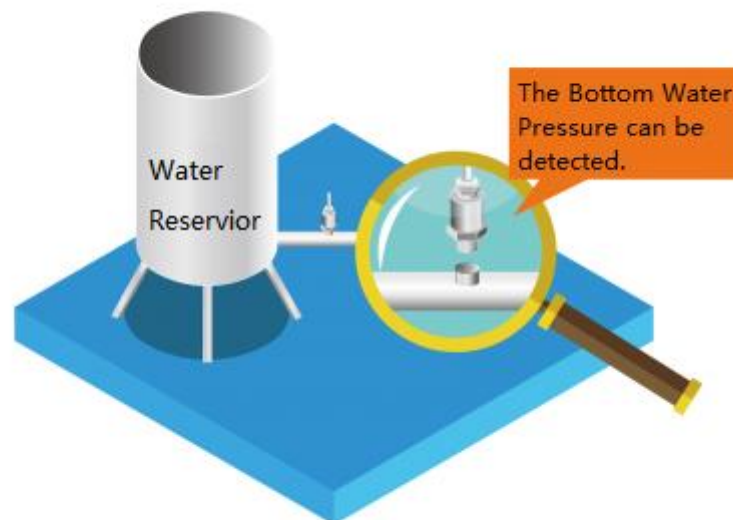


- Installation Scenes

- Installation Scenes



Tube Water Pressure Detection



Bottom Water Pressure Detection



NOTE:

- 1.To guarantee the interface tightness, you need to install a waterproof nut and bind PTFE tape.
- 2.Please take necessary measures to avoid large pressure involved during usage.

FAQ

Q1. Some general Arduino Problems/FAQ/Tips

A. Click [the topic link](#) on DFRobot Forum.

For any questions, advice or cool ideas to share, please visit the [DFRobot Forum](#).

More Documents

