



Chipsmall Limited consists of a professional team with an average of over 10 year of expertise in the distribution of electronic components. Based in Hongkong, we have already established firm and mutual-benefit business relationships with customers from,Europe,America and south Asia,supplying obsolete and hard-to-find components to meet their specific needs.

With the principle of "Quality Parts,Customers Priority,Honest Operation,and Considerate Service",our business mainly focus on the distribution of electronic components. Line cards we deal with include Microchip,ALPS,ROHM,Xilinx,Pulse,ON,Everlight and Freescale. Main products comprise IC,Modules,Potentiometer,IC Socket,Relay,Connector.Our parts cover such applications as commercial,industrial, and automotives areas.

We are looking forward to setting up business relationship with you and hope to provide you with the best service and solution. Let us make a better world for our industry!



Contact us

Tel: +86-755-8981 8866 Fax: +86-755-8427 6832

Email & Skype: info@chipsmall.com Web: www.chipsmall.com

Address: A1208, Overseas Decoration Building, #122 Zhenhua RD., Futian, Shenzhen, China





Micro Modules

(Substrates with Built-in ICs, Products Utilizing with SESUB)

Bluetooth® V4.1 Smart (Low Energy) Single Mode Module

SESUB-PAN-D14580

Micro Modules

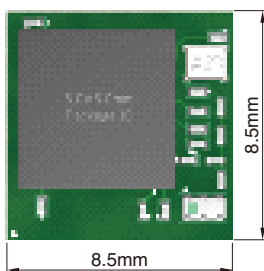
(Substrates with Built-in ICs, Products Utilizing with SESUB)

Bluetooth® V4.1 Smart (Low Energy) Single Mode Module

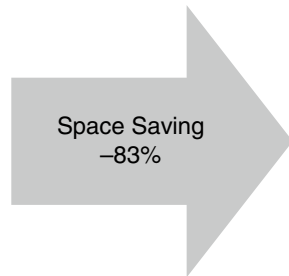
Overview of SESUB-PAN-D14580

FEATURES

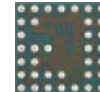
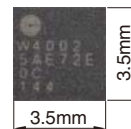
- Ultra small package - Ideal for for wearable devices
- Space saving Ultra small package 3.5 x 3.5 x 1.0mm (TYP)
- Packaged in 36 pin solder bumped BGA with 0.5mm pitch
- Compatible with Bluetooth® Smart Ready products
- ARM Cortex-M0 32bit high performance microcontroller
- 32kB OTP programmable memory, 84kB ROM for BT stack
- 42kB System SRAM, 8kB Retention SRAM
- External antenna connection allows design flexibility for improved performance.



Discrete Solution
72.3mm²



* Production Part is over molded

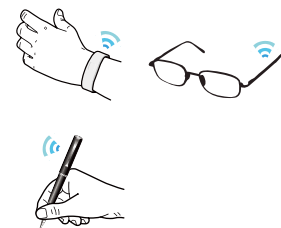


0.5mm pitch
Solder Bumped BGA
36pins

SESUB-PAN-D14580
12.3mm²

APPLICATION

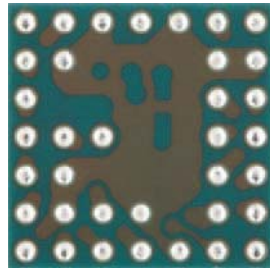
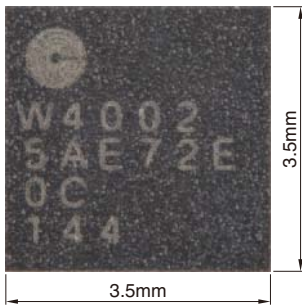
- Healthcare/sports & fitness equipment
(Example: Activity mass meter, thermometer, sphygmomanometer, blood oximeter, blood glucose meter, heart rate meter, biometrics)
- Wearable devices
(Example: Wristband, watch, ring, glasses, shoes, hat, shirt)
- Home entertainment equipment
(Example: Remote control, sensor tag, toys, lighting products)
- PC peripheral applications
(Example: Mouse, key board, stylus, presentation pointer)



- Bluetooth® and Bluetooth® Low Energy are the standards established by Bluetooth Special Interest Group (SIG).

SESUB-PAN-D14580

SHAPE & DIMENSIONS



0.5mm pitch
Solder Bumped BGA
36pins

* Production Part is over molded

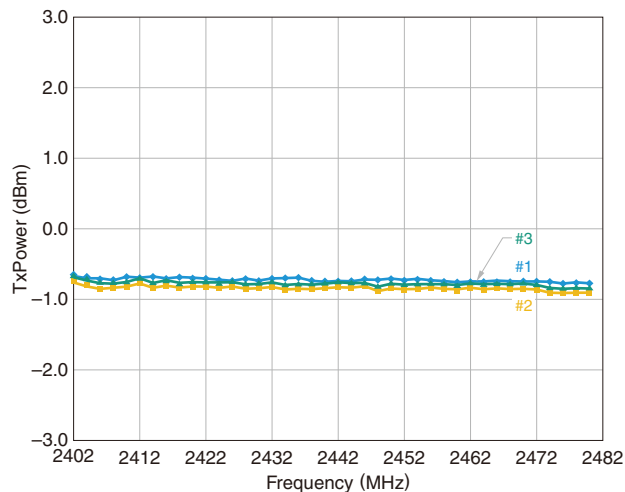
ELECTRICAL CHARACTERISTICS

CHARACTERISTICS SPECIFICATION TABLE

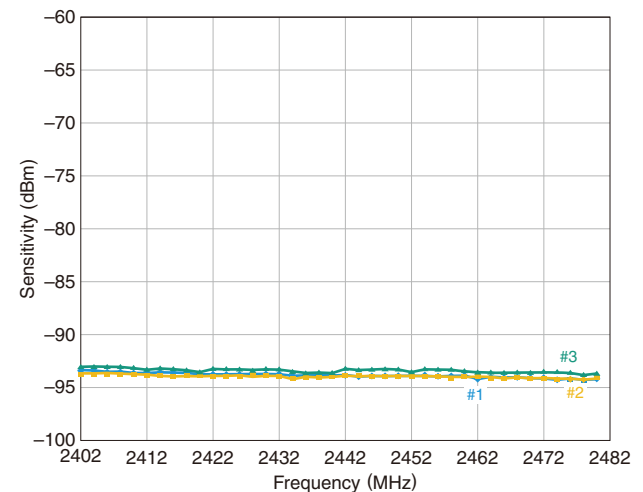
Communication standard	2.4GHz Bluetooth® V4.1 Low Energy
Transmitter output power level	0dBm (typ)
Receiver sensitivity level	94dBm
Host Interface	UART (2ch) / SPI+ / I2C (100k/400kHz)
Peripheral Interface	10bits ADC (4ch) / Pin-configurable GPIO
Current consumption	5.0mA (Tx), 5.4mA (Rx), 0.8μA (Deep Sleep mode)

RF CHARACTERISTICS

Frequency vs. TX Power



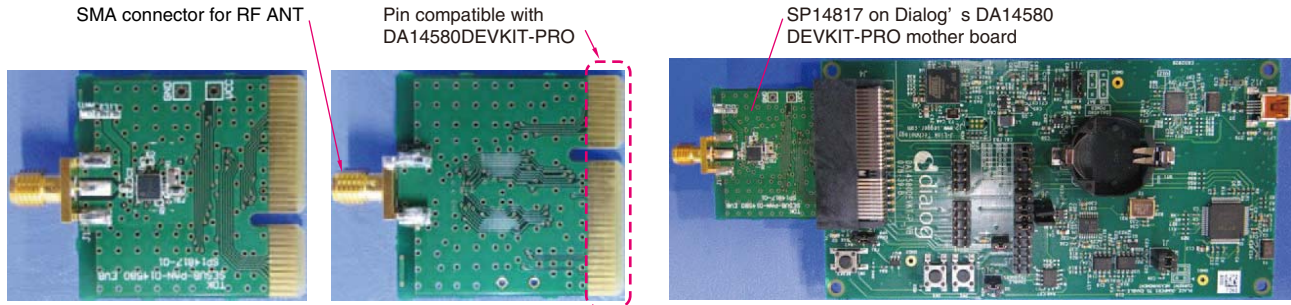
Frequency vs. Sensitivity



SESUB-PAN-D14580

■ SESUB-PAN-D14580 EVALUATION BOARD [SP14817]

- TDK's SP14817, Daughter board is ready to connect with Dialog Semiconductor's evaluation mother board. This allows for quick designs by utilizing Dialog's -software development tools and development materials



■ SESUB-PAN-D14580 EVALUATION KIT [SESUB-PAN-D14580EVK]

- Regulatory certified evaluation module [SP14808] with integrated 128kB Serial Flash ROM for reprogramming during development. Evaluation Module is ideal for immediate software development.



■ ORDERING INFORMATION

Ordering Code	Contents	MOQ	Remark
SESUB-PAN-D14580		1000pcs	
SP14817		1pc	Evaluation board for RF characteristics.
SESUB-PAN-D14580 EVK	SP14808	1pc	SESUB-PAN-D14580 Evaluation Module with ANT Certified Japanese & FCC Radio Certification
	SP14809	1pc	Adapter Board for SP14808.
SP14808		1pc	For the customer who wants to have spare units.
SP14808 ST		1set	SP14808ST contains 5 pcs of SP14808 in a set. Volume discount.