



Chipsmall Limited consists of a professional team with an average of over 10 year of expertise in the distribution of electronic components. Based in Hongkong, we have already established firm and mutual-benefit business relationships with customers from,Europe,America and south Asia,supplying obsolete and hard-to-find components to meet their specific needs.

With the principle of "Quality Parts,Customers Priority,Honest Operation,and Considerate Service",our business mainly focus on the distribution of electronic components. Line cards we deal with include Microchip,ALPS,ROHM,Xilinx,Pulse,ON,Everlight and Freescale. Main products comprise IC,Modules,Potentiometer,IC Socket,Relay,Connector.Our parts cover such applications as commercial,industrial, and automotives areas.

We are looking forward to setting up business relationship with you and hope to provide you with the best service and solution. Let us make a better world for our industry!



Contact us

Tel: +86-755-8981 8866 Fax: +86-755-8427 6832

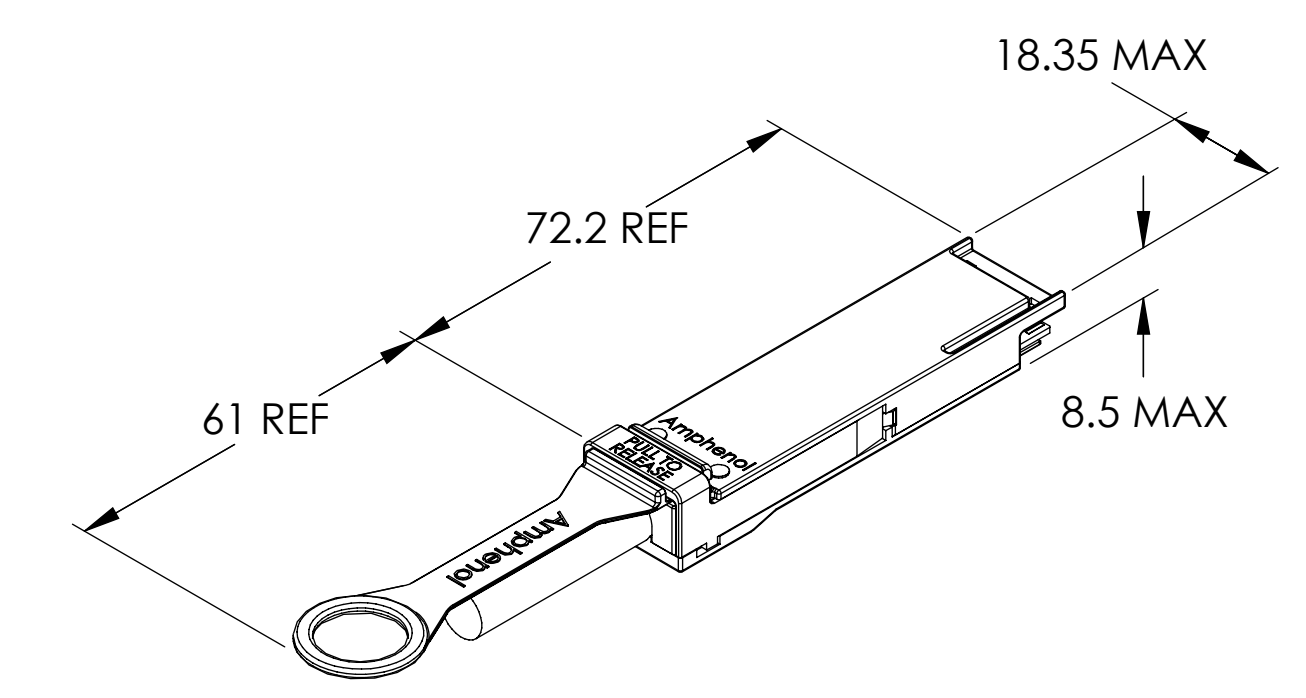
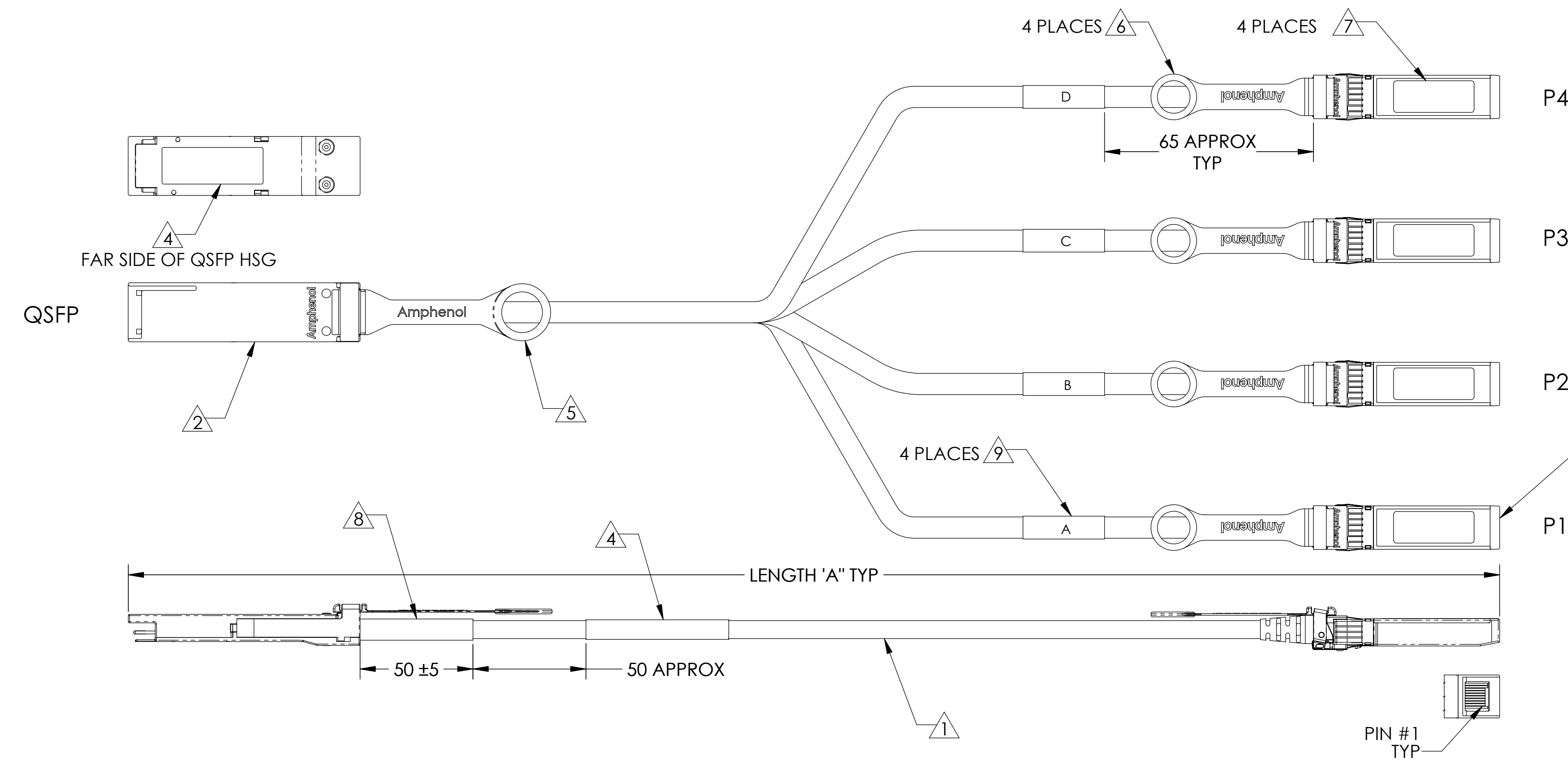
Email & Skype: info@chipsmall.com Web: www.chipsmall.com

Address: A1208, Overseas Decoration Building, #122 Zhenhua RD., Futian, Shenzhen, China



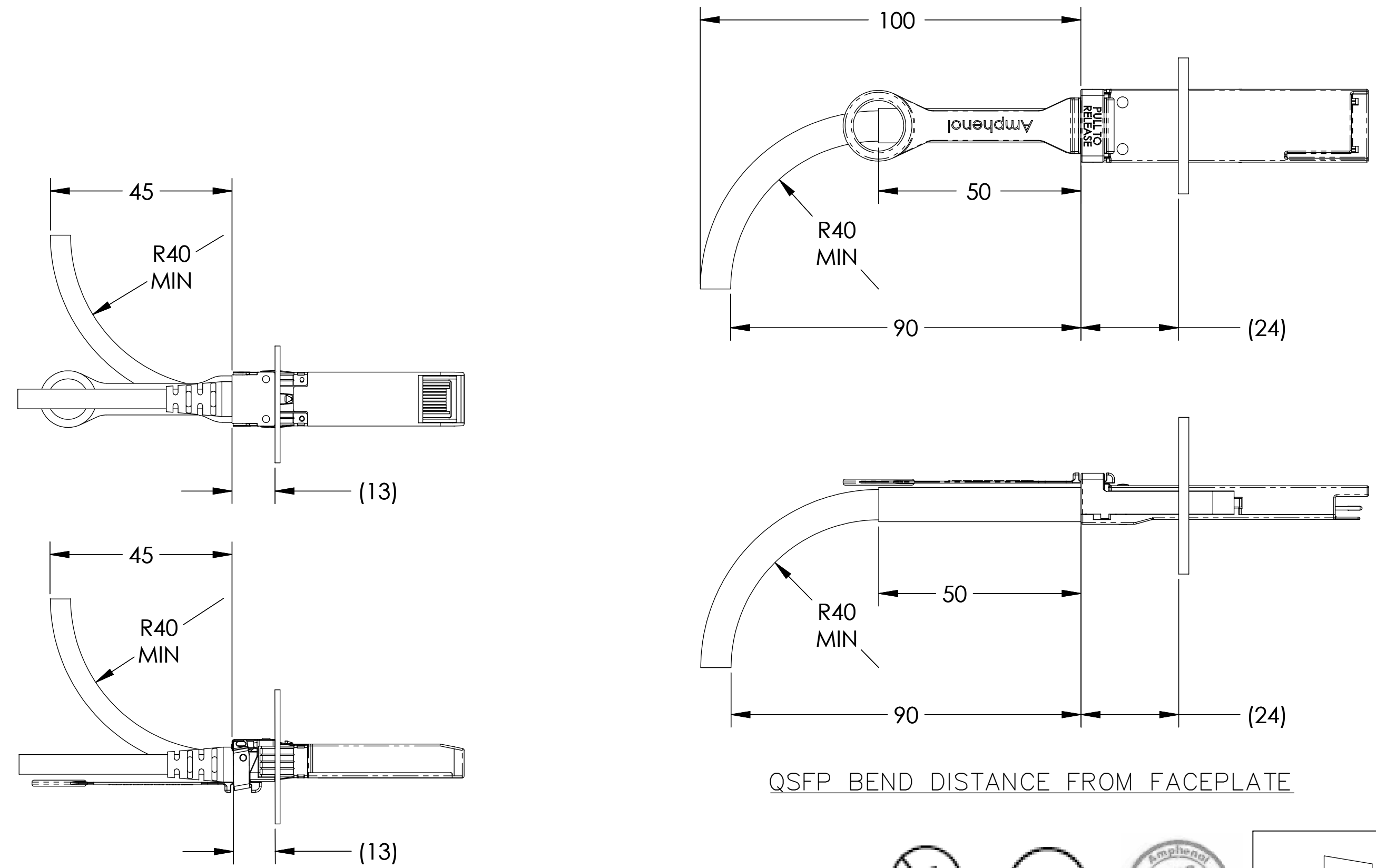
REVISONS		DESCRIPTION	BY	DATE	APPROVED
ZONE	REV.	SCR NUMBER			
	A	DDYR-A3AQZF.VER01		10/15/2015	DC
	B	TBEE-A5UUQC.VER01	UPDATED THE DESCRIPTION FOR ITEM #1 IN TABLE 2	HCL 02/25/2016	T.BERTHIAUME
	C	DDYR-A8PJSJ.VER02	ADDED 2M ASSY TO TABLE 1	HCL 04/12/2016	D.DYER

TABLE 1		
AHSP P/N	LENGTH "A"	CUSTOMER P/N
NDAQJ-C102	5000 ±125 MM	SF-NDAQJ100G-005M
NDAQJ-C103	2000 ±75 MM	SF-NDAQJ100G-002M

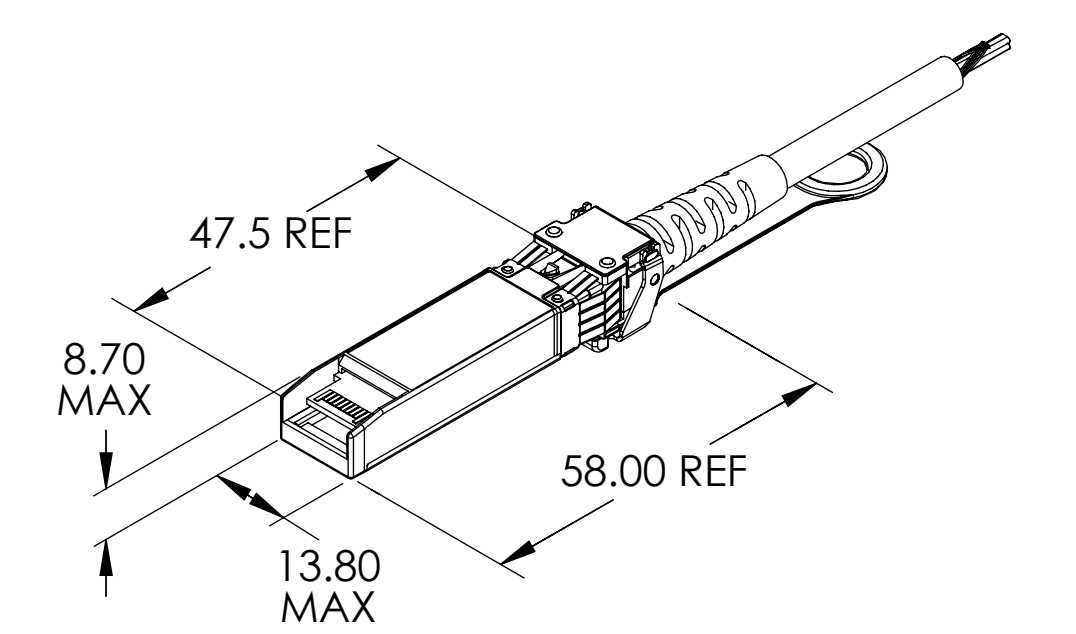


QSFP DIECAST DIMENSIONS

TABLE 2	
ITEM No.	DESCRIPTION
1	26 AWG, 2-PR, PVC BLACK, UL 75°C CM OR AWM STYLE 20276 80°C
2	PLUG, QSFP+, REFERENCE SFF-8661
3	PLUG, SFP+, REFERENCE SFF-8432, PULL TO RELEASE
4	LABEL, QSFP CONN - AHSP P/N, REV, DATE CODE, LENGTH, CoO & SERIAL NUMBER
5	QSFP LANYARD - GREEN (PANTONE 347C)
6	SFP+ LANYARD - GREEN (PANTONE 347C)
7	LABEL, SFP CONN - AHSP P/N, REV, DATE CODE, LENGTH, CoO & SERIAL NUMBER
8	SHRINK TUBING
9	LABEL, REFERENCE DESIGNATOR



QSFP BEND DISTANCE FROM FACEPLATE



SFP+ DIECAST DIMENSIONS

9. CABLE ASSEMBLIES SHALL BE TESTED PER AMPHENOL SPECIFICATIONS AND PROCEDURES.
 8. CABLE ASSEMBLIES, COMPONENTS, SUB-COMPONENTS, MATERIALS AND MFG PROCESSES MUST MEET AMPHENOL SPECIFICATIONS.
 7. UL LABEL MUST BE ON THE SHIPPING CARTON PER SUBJECT 764 OF THE UL COMPONENT WIRING HARNESS (ZPFW2) FILE #E86140. CSA LABEL MUST BE ON SHIPPING CARTON.
 6. PACKAGE COMPLETED ASSY IN AN APPROPRIATELY SIZED ESD BAG.
 5. EPROM CONTENT SHALL BE COMPLIANT WITH SFF-8636 AND SFF-8472 SPECIFICATIONS FOR 100GBASE-CR4. EPROM REVISION IS EQUAL TO AHSP PART NUMBER REVISION.
 4. CABLE ASSEMBLIES MUST MEET SHIELDING EFFECTIVENESS REQUIREMENTS OF 35dB FROM 1-10GHz AND 30dB FROM 10-18GHz.
 3. COMPLIANT TO EU DIRECTIVE 2011/65/EU - RoHS2.
 2. ASSEMBLIES SHALL BE COMPLIANT TO 100GBASE-CR4 SPECIFICATION.
 1. THIS DRAWING IS RESERVED FOR AMPHENOL CABLES ON DEMAND.
- NOTES: UNLESS OTHERWISE SPECIFIED

SFP+ BEND DISTANCE FROM FACEPLATE



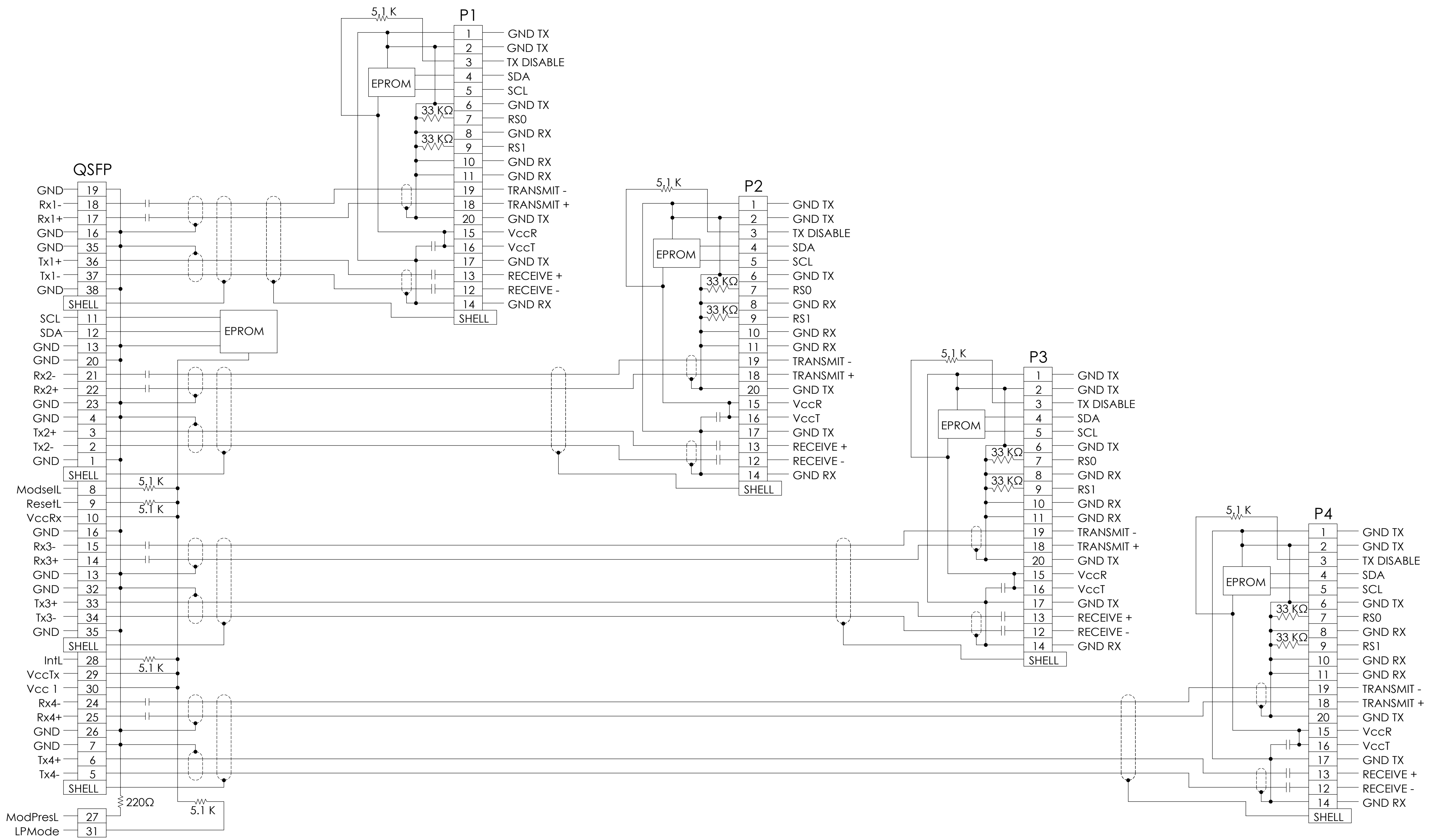
INTERPRET PER ASME Y14.5
CODE IDENT 31413

TOLERANCES		DWN	10/12/2015	DC
0.0	± 0.25	CHK	10/12/2015	DD
0.00	± 0.08	APVD	10/12/2015	EM
ANGLES	± 1.0°	UNLESS OTHERWISE SPECIFIED DIMENSIONS ARE IN MM		

Amphenol AHSP A Division of Amphenol Corporation 200 Innovative Way, Suite 201, Nashua, N.H. 03062 (603) 879-3000		REV	N/A
		PART NO.	SEE TABLE 1
TITLE		REV	C
CABLE ASSEMBLY, QSFP/(4)SFP+, PSV, 100Q, 100GbE, 26AWG		DRAWING NO.	C-NDAQJ-C199
SIZE	D	SCALE	1:1
		SHEET	1 OF 2

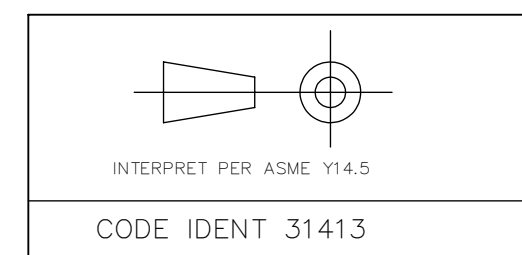
CUSTOMER USE DRAWING

REVISIONS						
ZONE	REV.	SCR NUMBER	DESCRIPTION	BY	DATE	APPROVED
			SEE SHEET 1			



NOTE: DC BLOCKING CAP VALUE IS 0.1μF

TOLERANCES	DWN	10/12/2015	DC	Amphenol AHSP A Division of Amphenol Corporation 200 Innovative Way, Suite 201, Nashua, N.H. 03062 (603) 879-3000
0.0	± 0.25	CHK	10/12/2015	
0.00	± 0.08	DD		
		APVD	10/12/2015	
ANGLES	± 1.0°	EM		
UNLESS OTHERWISE SPECIFIED DIMENSIONS ARE IN MM				TITLE CABLE ASSEMBLY, QSFP/(4)SFP+, PSV, 100Ω, 100GbE, 26AWG
PART NO.			SEE TABLE 1	REV N/A
DRAWING NO.			C-NDAQGJ-C199	REV C
SIZE	D	SCALE	1:1	SHEET 2 OF 2



CODE IDENT 31413

CUSTOMER USE DRAWING