



Chipsmall Limited consists of a professional team with an average of over 10 year of expertise in the distribution of electronic components. Based in Hongkong, we have already established firm and mutual-benefit business relationships with customers from,Europe,America and south Asia,supplying obsolete and hard-to-find components to meet their specific needs.

With the principle of “Quality Parts,Customers Priority,Honest Operation,and Considerate Service”,our business mainly focus on the distribution of electronic components. Line cards we deal with include Microchip,ALPS,ROHM,Xilinx,Pulse,ON,Everlight and Freescale. Main products comprise IC,Modules,Potentiometer,IC Socket,Relay,Connector.Our parts cover such applications as commercial,industrial, and automotives areas.

We are looking forward to setting up business relationship with you and hope to provide you with the best service and solution. Let us make a better world for our industry!



Contact us

Tel: +86-755-8981 8866 Fax: +86-755-8427 6832

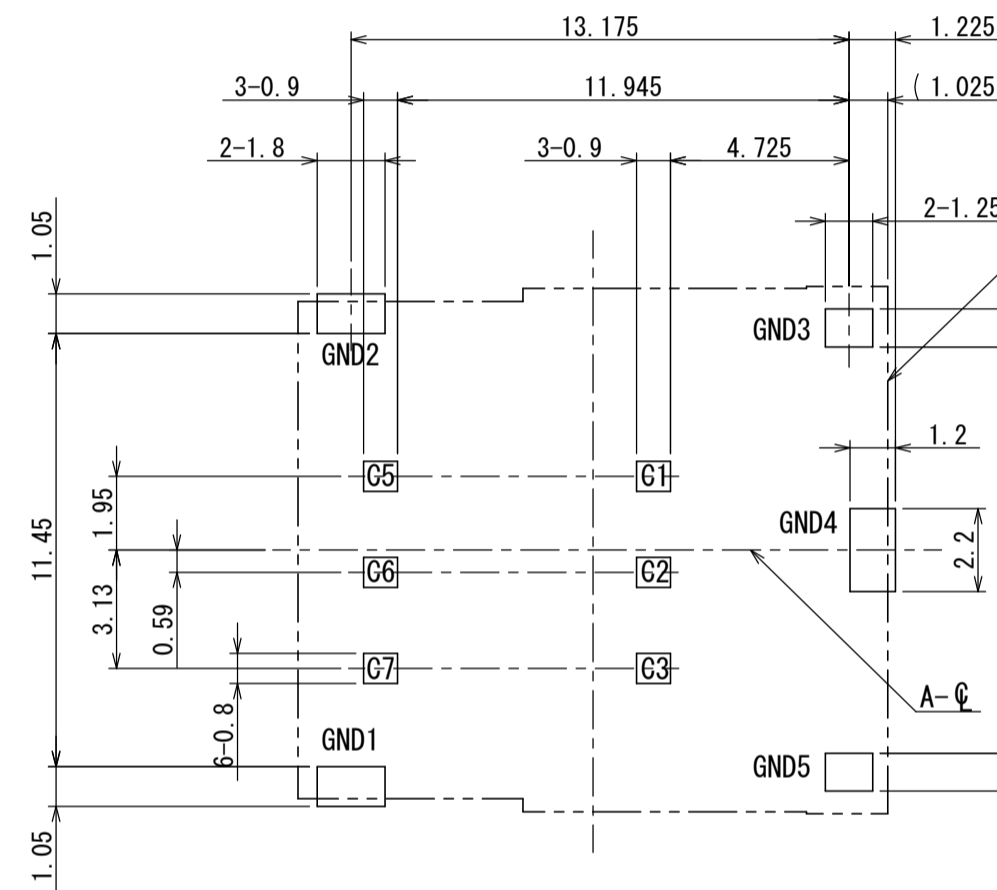
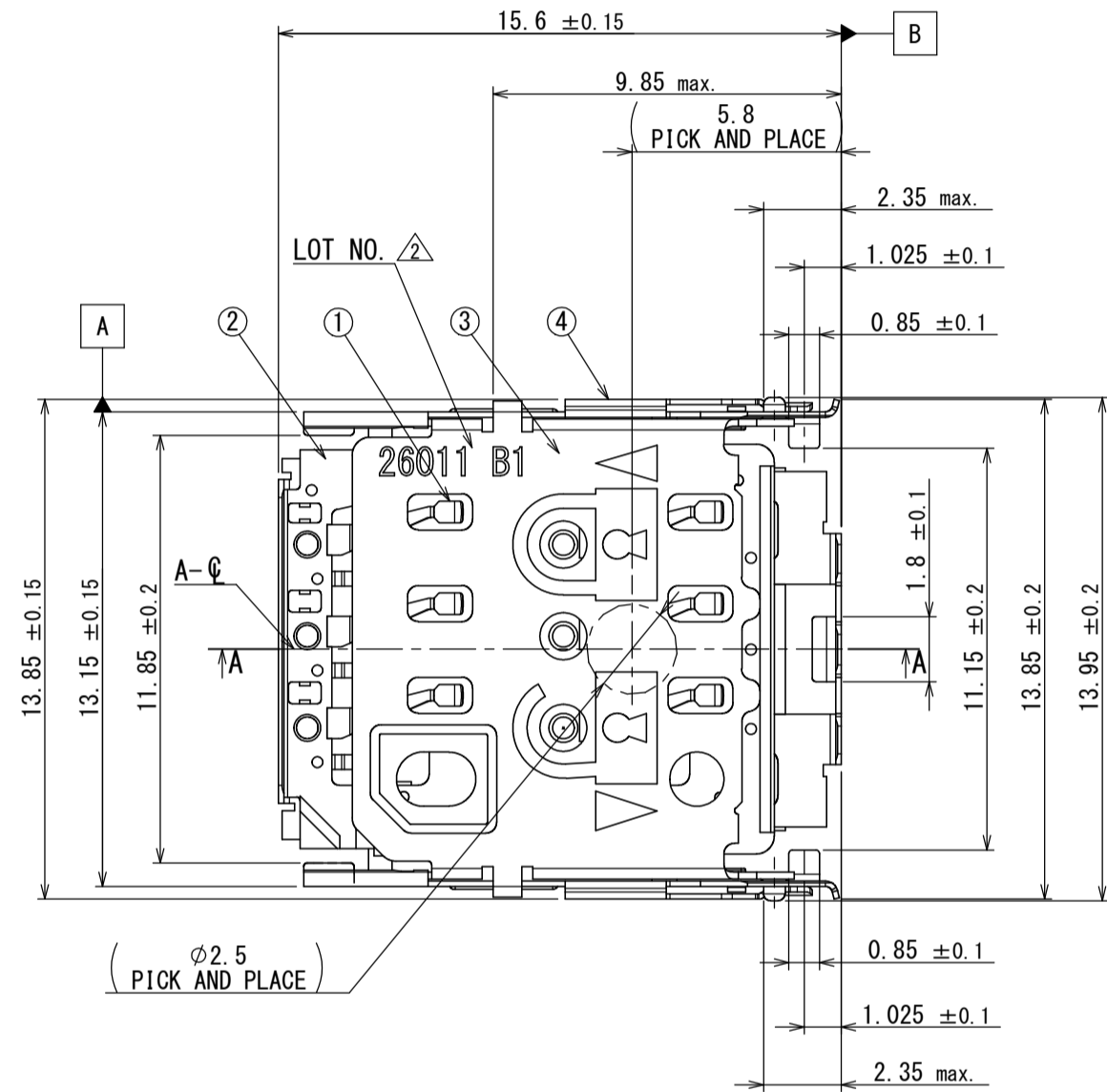
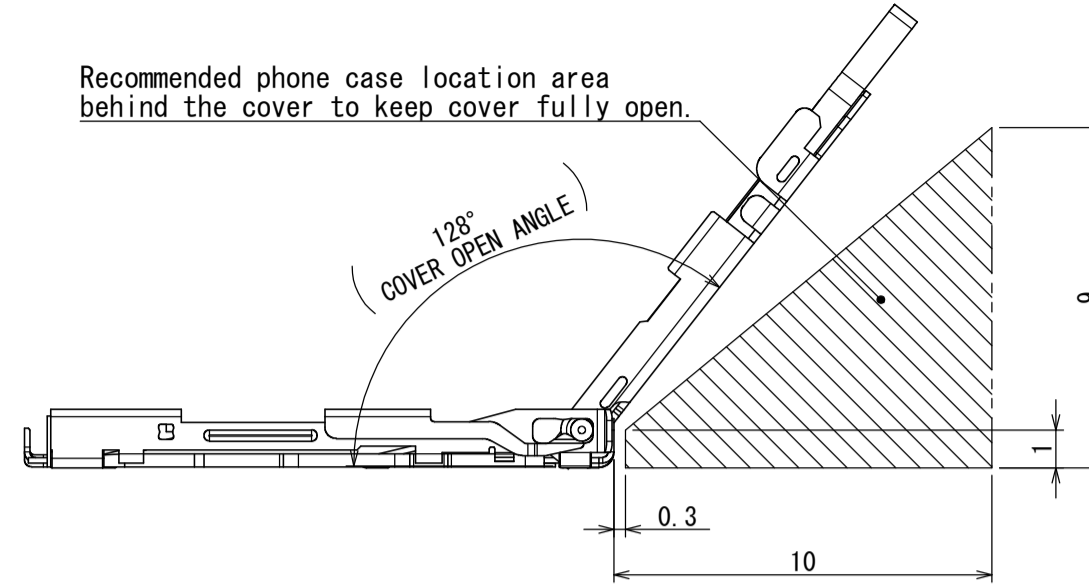
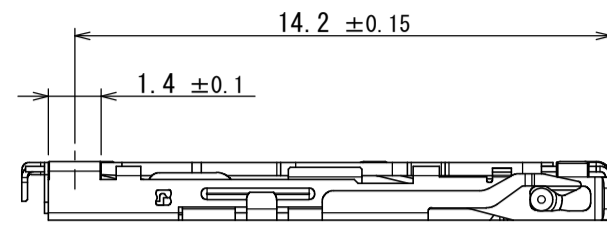
Email & Skype: info@chipsmall.com Web: www.chipsmall.com

Address: A1208, Overseas Decoration Building, #122 Zhenhua RD., Futian, Shenzhen, China

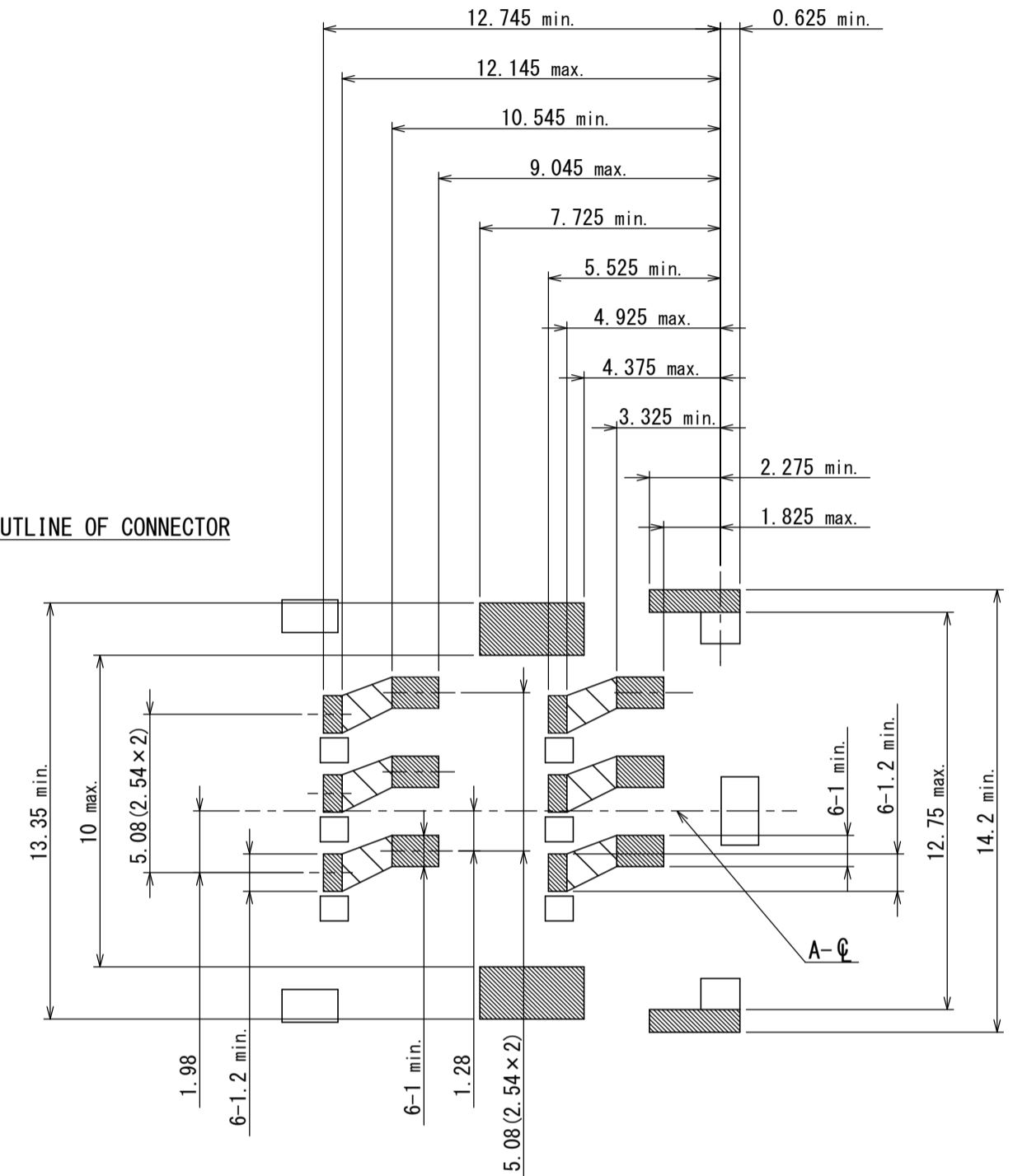


版数 VER.	年月日 DATE	図 NO.	変更内容 DESCRIPTION	製 DR.	担 CHK.	査 APPD.	承認 APPD.
2	15/APR/2014	004608	ADDED DIMENSION		M. SHIMADA	-	A. NATORI

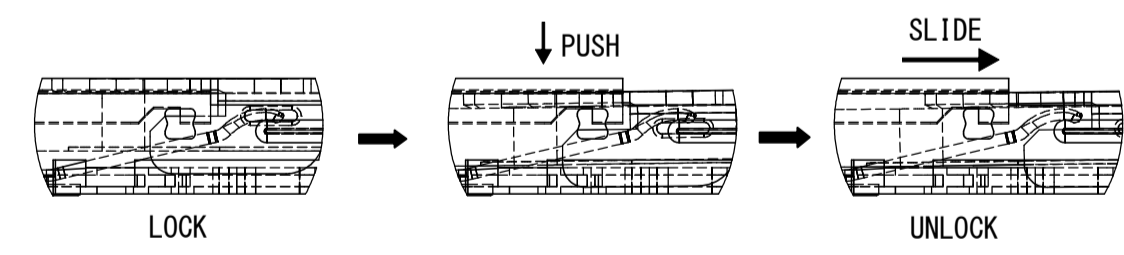
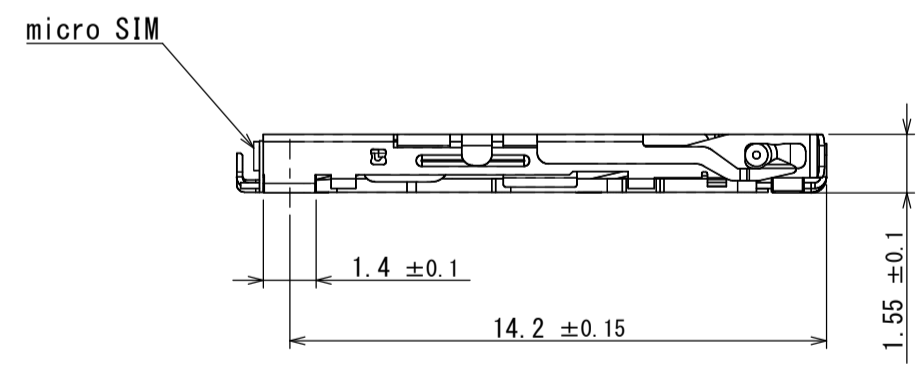
Recommended phone case location area behind the cover to keep cover fully open.



OUTLINE OF CONNECTOR

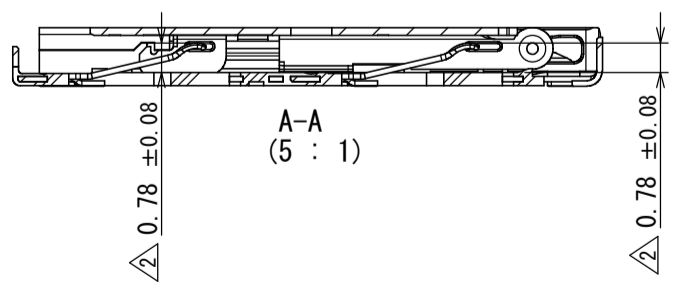


RESTRICTED AREA (No pattern and Via hole)
All the pattern and Via holes under the connector should be coated by resist.
APPLICABLE PWB. DIMENSION FOR RESTRICTED AND INSULATION AREA(REF.)



NOTE1. COPLANARITY 0.08mm max.
NOTE2. LOT INFORMATION IS SHOWN AS BELOW.
e.g. 26011

PRODUCTION LINE NO.
PRODUCTION DATE (YMDD)



PART No.	PART NAME	TERMINAL AREA / LOCK HINGE AREA	CONTACT AREA
1	CONTACT	Au FLASH OVER Ni (1μm MIN.)	Au (0.5μm MIN.) OVER Ni (2~6μm)
4	GROUND-FRAME		-

符号 No.	名称 DESCRIPTION	個 QTY.	材 MATERIAL	仕 FINISH	備 REMARKS
4	GROUND-FRAME	1	COPPER ALLOY	TABLE 1	
3	COVER	1	STAINLESS	-	
2	HOUSING	1	GLASS FILLED LCP	-	
1	CONTACT	6	COPPER ALLOY	TABLE 1	

仕様書(SPECIFICATION) JACS-10936	第1版(ORIGINAL DATE) 01/JUN/2012	尺度(SCALE) 5:1	シリーズ(SERIES) SF15	日本航空電子工業株式会社
製 DR.	担 CHK.	名称(TITLE) SF15W006S4B		JAE JAPAN AVIATION ELECTRONICS INDUSTRY, LTD.
担 CHK.	M. SHIMADA			
寸法(DIMENSION)	角度(ANGLES)	製 DR.		図面番号(DRAWING NO.) SJ113074
一般公差(GENERAL TOLERANCE)	単位(UNIT): mm	担 CHK.		
× ± 0.4	×° ±	査 APPD.		質量(MASS)
×× ± 0.1	××° ±	承 APPD.		
××× ±		承認 APPD.		版 VER.
		A. NATORI		2