



Chipsmall Limited consists of a professional team with an average of over 10 year of expertise in the distribution of electronic components. Based in Hongkong, we have already established firm and mutual-benefit business relationships with customers from,Europe,America and south Asia,supplying obsolete and hard-to-find components to meet their specific needs.

With the principle of “Quality Parts,Customers Priority,Honest Operation,and Considerate Service”,our business mainly focus on the distribution of electronic components. Line cards we deal with include Microchip,ALPS,ROHM,Xilinx,Pulse,ON,Everlight and Freescale. Main products comprise IC,Modules,Potentiometer,IC Socket,Relay,Connector.Our parts cover such applications as commercial,industrial, and automotives areas.

We are looking forward to setting up business relationship with you and hope to provide you with the best service and solution. Let us make a better world for our industry!



Contact us

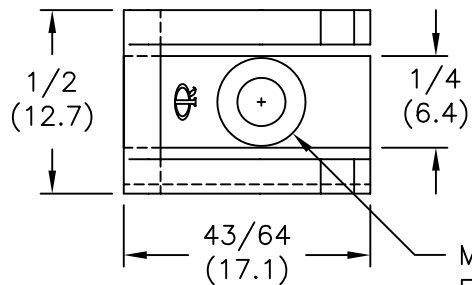
Tel: +86-755-8981 8866 Fax: +86-755-8427 6832

Email & Skype: info@chipsmall.com Web: www.chipsmall.com

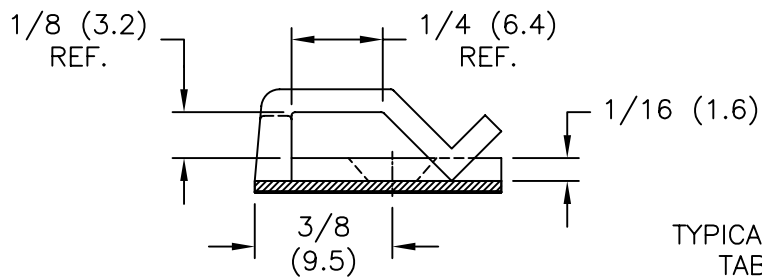
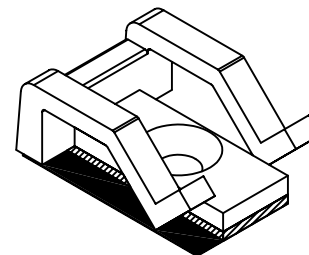
Address: A1208, Overseas Decoration Building, #122 Zhenhua RD., Futian, Shenzhen, China



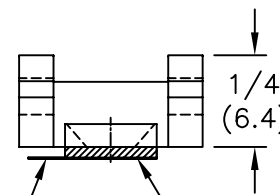
PART NO.	
SFCC-4-01	W/O ADHESIVE
SFCC-4-01A-RT	W/ADHESIVE



MOUNTING HOLE FOR #4 FLAT HEAD SCREW



TYPICAL RELEASE TAB LOCATION



DOUBLE SIDED ADHESIVE TAPE

NOTES:

1. MATERIAL: NYLON 6/6 (RMS-01).
2. COLOR: NATURAL.
3. TAPE: 1/32 (0.8) THICK, DOUBLE SIDED ADHESIVE (RMS-15).

TITLE: SPLIT FLAT CABLE CLAMPS					DWG IN IN (MM)	
TOLERANCES UNLESS NOTED .XX=±.010 .XXX=±.005 FRAC=±1/64 ANG=±1°			FILE # SFCC-4	DWN: J.B.	APP:	FINAL
C	COMPLETELY RE-DRAWN AND CHANGED FILE#	SM 09.10.01	MAT'L: SEE NOTES	DT: 09-19-95	DT:	PART #
B	11/32 DIM. CHANGED TO 3/8	MB. 1.24.00	RE: RICHCO, INC.	RICHCO INC. PO BOX 804238, CHICAGO, 60680 (773) 539-4060		SEE TABLE
A	11/32 DIM. ADDED	J.L. 09.24.97				PRINT TYPE
REV	DESCRIPTION	ENGR DATE				CA