



Chipsmall Limited consists of a professional team with an average of over 10 year of expertise in the distribution of electronic components. Based in Hongkong, we have already established firm and mutual-benefit business relationships with customers from,Europe,America and south Asia,supplying obsolete and hard-to-find components to meet their specific needs.

With the principle of "Quality Parts,Customers Priority,Honest Operation,and Considerate Service",our business mainly focus on the distribution of electronic components. Line cards we deal with include Microchip,ALPS,ROHM,Xilinx,Pulse,ON,Everlight and Freescale. Main products comprise IC,Modules,Potentiometer,IC Socket,Relay,Connector.Our parts cover such applications as commercial,industrial, and automotives areas.

We are looking forward to setting up business relationship with you and hope to provide you with the best service and solution. Let us make a better world for our industry!



Contact us

Tel: +86-755-8981 8866 Fax: +86-755-8427 6832

Email & Skype: info@chipsmall.com Web: www.chipsmall.com

Address: A1208, Overseas Decoration Building, #122 Zhenhua RD., Futian, Shenzhen, China



PART NUMBER CODING
SFH210-PP_C-D_-ID-BK

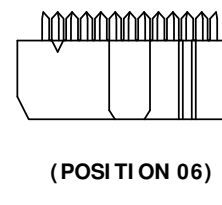
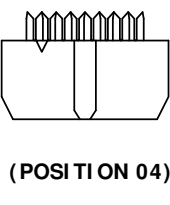
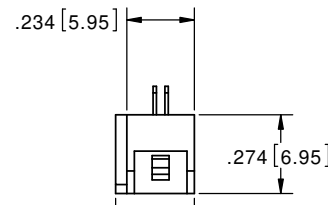
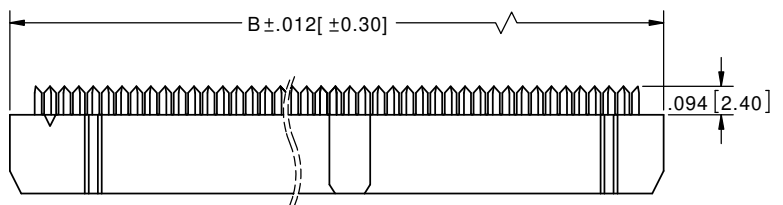
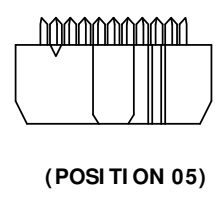
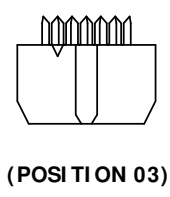
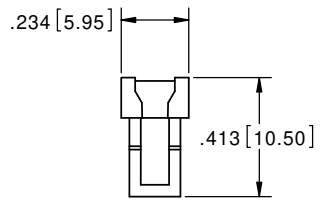
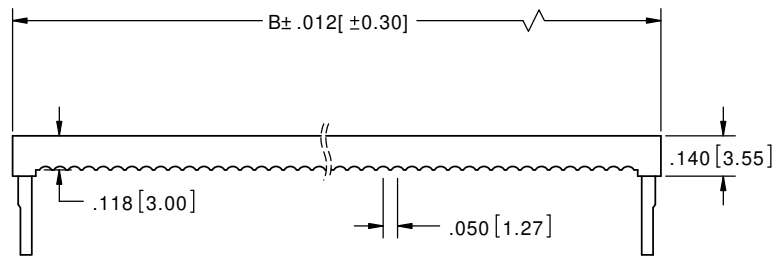
COLOR
 BK= BLACK

NUMBER OF POSITIONS
 (CONTACTS PER ROW)

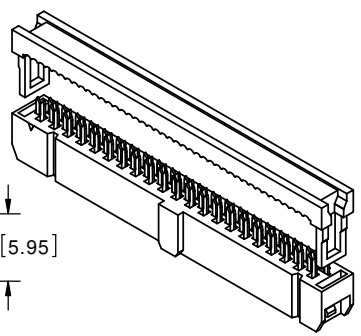
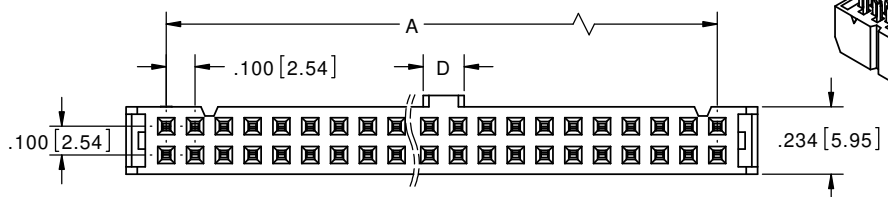
PLATING
 (SEE PLATING TABLE)

PLATING TABLE (.000030" MIN. NICKEL UNDERPLATE)	
CONTACT SURFACE	TERMINATION
P = GOLD FLASH	GOLD FLASH
V = GOLD FLASH	NICKEL
K = .000015" GOLD	NICKEL
J = .000015" GOLD	GOLD FLASH
E = .000100" PURE TIN, MATTE	.000100" PURE TIN, MATTE

REVISIONS				
REV.	ECO. NO	DESCRIPTION	DATE	BY
C	3374	REMOVE 30 AND 32 POSITION OF DIMENSION .047 [1.20] ON PAGE 2	02/01/2016	LH
D	3540	REMOVE 18 AND 22 POSITIONS ON DIMENSION TABLE	10/20/2016	LH
E	3697	ADD 30 AND 32 POSITIONS DIM B TOLERANCE	06/16/2017	LH



(POSITION 07 THRU 25)



- NOTES:**
1. INSULATOR MATERIAL: PBT 30% GLASS FIBER.
 2. CONTACT MATERIAL: PHOSPHOR BRONZE.
 3. OPERATING TEMPERATURE: -40 °C TO +105 °C.
 4. UL FLAMMABILITY RATING: 94V-0.
 5. CURRENT RATING: 1 AMP.
 6. INSULATION RESISTANCE: 3,000 MEGOHMS MIN.
 7. CONTACT RESISTANCE: 30m OHMS MAX.
 8. DIELECTRIC WITHSTANDING: 500 V AC.
 9. MATES WITH SBH11 SERIES
 10. FOR .050" [1.27mm] PITCH FLAT RIBBON CABLE, 26 - 28 AWG WIRE RANGE.



PART NUMBER	POSITIONS/ CONTACTS	A		B		D	
		INCH	MM	INCH	MM	INCH	MM
SFH210-PP_C-D03-ID-BK	03/06	0.200	5.08	0.480	12.18	0.075	1.90
SFH210-PP_C-D04-ID-BK	04/08	0.300	7.62	0.580	14.72		
SFH210-PP_C-D05-ID-BK	05/10	0.400	10.16	0.680	17.26	0.142	3.60
SFH210-PP_C-D06-ID-BK	06/12	0.500	12.70	0.780	19.80		
SFH210-PP_C-D07-ID-BK	07/14	0.600	15.24	0.880	22.34		
SFH210-PP_C-D08-ID-BK	08/16	0.700	17.78	0.980	24.88		
SFH210-PP_C-D09-ID-BK	09/18	0.800	20.32	1.080	27.42		
SFH210-PP_C-D10-ID-BK	10/20	0.900	22.86	1.180	29.96		
SFH210-PP_C-D12-ID-BK	12/24	1.100	27.94	1.380	35.04		
SFH210-PP_C-D13-ID-BK	13/26	1.200	30.48	1.480	37.58		
SFH210-PP_C-D15-ID-BK	15/30	1.400	35.56	1.680	42.66		
SFH210-PP_C-D17-ID-BK	17/34	1.600	40.64	1.880	47.74		
SFH210-PP_C-D20-ID-BK	20/40	1.900	48.26	2.180	55.36	SEE SHEET 2 FOR DIMENSIONS	
SFH210-PP_C-D25-ID-BK	25/50	2.400	60.96	2.680	68.06		
POSITION 30 & 32:		30/60					
SEE SHEET 2 FOR P/N		32/64					

UNLESS OTHERWISE SPECIFIED: DIMENSIONS ARE IN INCHES (MM)

TOLERANCES:
 ANGULAR: ± 1°
 DECIMALS
 XX=± .01 [3]
 XXX=± .008 [20]
 XXXX=± .0040 [100]

DRAWN: 03/17/2009 JH
 DATE: 03/17/2009
 NAME: JH

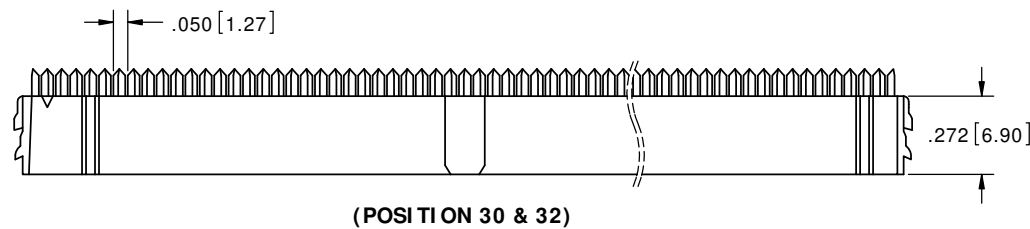
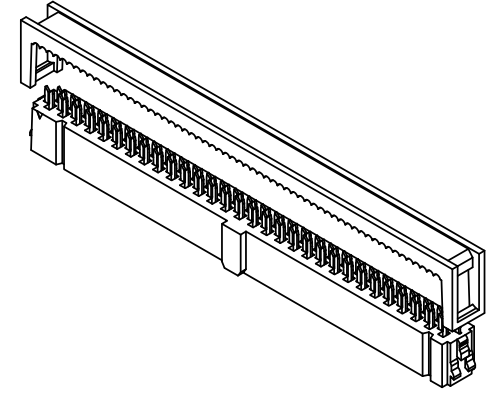
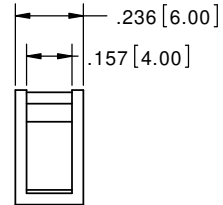
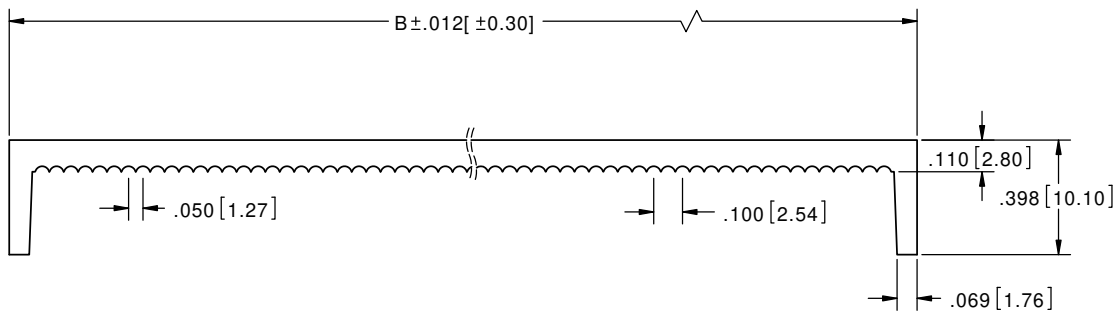
THE INFORMATION HEREIN CONTAINS PROPRIETARY INFORMATION OF SULLINS ELECTRONICS AND IS NOT TO BE REPRODUCED, USED OR DISCLOSED TO OTHERS FOR ANY PURPOSE EXCEPT AS SPECIFICALLY AUTHORIZED IN WRITING BY AN OFFICER OF SULLINS ELECTRONICS.

SULLINS
 CONNECTOR SOLUTIONS

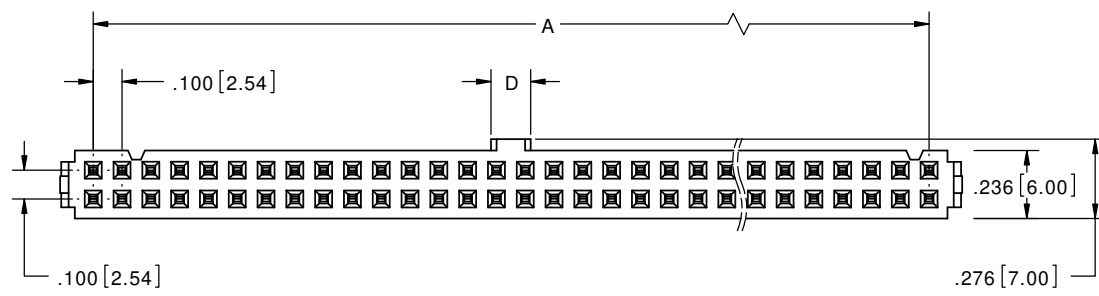
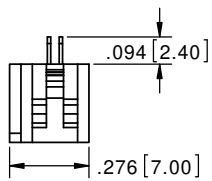
TITLE: IDC SOCKET, .100" CC/RS
 PART NUMBER: SFH210-PP_C-D_-ID-BK

SIZE: C
 CAGE CODE: 54453
 DWG. NO.: 11222
 REV: E

SCALE: 2:1
 SHEET 1 OF 2



(POSITION 30 & 32)



PART NUMBER	POSITIONS/ CONTACTS	A		B		D	
		INCH	MM	INCH	MM	INCH	MM
POSITION 03 THRU 25: SEE SHEET 1 FOR PART NUMBERS	03/06	SEE SHEET 1 FOR DIMENSIONS					
	04/08						
	05/10						
	06/12						
	07/14						
	08/16						
	09/18						
	10/20						
	12/24						
	13/26						
	15/30						
	17/34						
20/40							
25/50							
SFH210-PP_C-D30-ID-BK	30/60	2.900	73.66	3.179	80.74	0.138	3.50
SFH210-PP_C-D32-ID-BK	32/64	3.100	78.74	3.379	85.82		

- NOTES:
1. INSULATOR MATERIAL: PBT 30% GLASS FIBER.
 2. CONTACT MATERIAL: PHOSPHOR BRONZE.
 3. OPERATING TEMPERATURE: -40 °C TO +105 °C.
 4. UL FLAMMABILITY RATING: 94V-0.
 5. CURRENT RATING: 1 AMP PER CONTACT.
 6. INSULATION RESISTANCE: 3,000 MEGOMHS MIN.
 7. CONTACT RESISTANCE: 30m OHMS MAX.
 8. DIELECTRIC WITHSTANDING: 500 VAC.
 9. MATES WITH SBH11 SERIES
 10. FOR .050" [1.27mm] PITCH FLAT RIBBON CABLE, 26 - 28 AWG WIRE RANGE.



UNLESS OTHERWISE SPECIFIED:
DIMENSIONS ARE IN INCHES (MM)

TOLERANCES:
ANGULAR: ± 1°

DECIMALS:
XX=± .01 [3]
XXX=± .008 [20]
XXXX=± .0040 [100]

DRAWN	DATE	NAME				
JH	03/17/2009	JH				
<small>THE INFORMATION HEREIN CONTAINS PROPRIETARY INFORMATION OF SULLINS ELECTRONICS AND IS NOT TO BE REPRODUCED, USED OR DISCLOSED TO OTHERS FOR ANY PURPOSE EXCEPT AS SPECIFICALLY AUTHORIZED IN WRITING BY AN OFFICER OF SULLINS ELECTRONICS.</small>			TITLE IDC SOCKET, .100" CC/RS			
PART NUMBER SFH210-PP_C-D_-ID-BK			REV E			
SIZE	CAGE CODE	DWG. NO.	SCALE: 2:1			
C	54453	11222	SHEET 2 OF 2			