



Chipsmall Limited consists of a professional team with an average of over 10 year of expertise in the distribution of electronic components. Based in Hongkong, we have already established firm and mutual-benefit business relationships with customers from,Europe,America and south Asia,supplying obsolete and hard-to-find components to meet their specific needs.

With the principle of “Quality Parts,Customers Priority,Honest Operation,and Considerate Service”,our business mainly focus on the distribution of electronic components. Line cards we deal with include Microchip,ALPS,ROHM,Xilinx,Pulse,ON,Everlight and Freescale. Main products comprise IC,Modules,Potentiometer,IC Socket,Relay,Connector.Our parts cover such applications as commercial,industrial, and automotives areas.

We are looking forward to setting up business relationship with you and hope to provide you with the best service and solution. Let us make a better world for our industry!



## Contact us

Tel: +86-755-8981 8866 Fax: +86-755-8427 6832

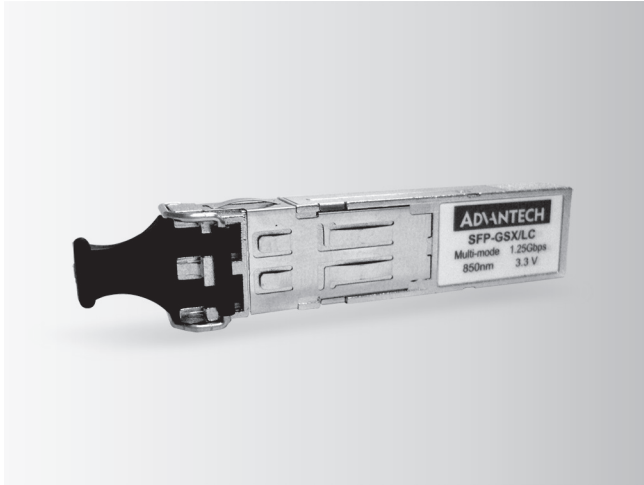
Email & Skype: info@chipsmall.com Web: www.chipsmall.com

Address: A1208, Overseas Decoration Building, #122 Zhenhua RD., Futian, Shenzhen, China



# Accessories

## SFP Transceiver Modules



### Features

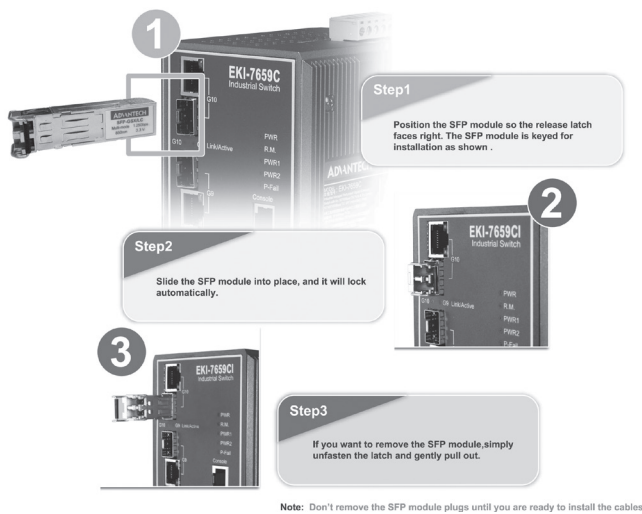
- Industry standard small form pluggable (SFP) package
- Immovable lock design
- Hot pluggable
- Duplex LC connector
- Full duplex speeds support
- TTL signal detect indicator
- 3.3 V<sub>DC</sub> power supply
- Industry leading EMI performance for high port density
- Class 1 laser product complies with EN 60825-1
- RoHS compliant

### Introduction

Advantech's Small Form-factor Pluggable (SFP) transceiver family is available with a variety of different types, allowing users to select the appropriate transceiver for each link to provide the required optical reach over the available optical fiber type. Advantech's SFP transceiver immovable lock design can fix SFP module into the switch firmly. Besides Advantech's SFP transceiver's compact design provides high port density and compliant with Fast Ethernet and IEEE 802.3z Gigabit Ethernet Standards. Advantech's SFP transceivers ensure your networks operate with maximum performance, reliability, and flexibility.

### Specifications

Category	Distance	Model Name	Wavelength	TX Power	RX Sens	Voltage	Operating Temp
100Base-FX	M.M. (2km)	SFP-FXM/LC-AE	1310 nm	-14dBm ~ -20dBm	-31dBm (Min)	3.3V	0 to 70 °C
	M.M. (2km)	SFP-FXM/LCI-AE					(-40 to 85 °C)
	S.M. (30km)	SFP-FXS/LC-30E	1310 nm	-8 dBm ~ -15dBm	-34dBm (Min)	3.3V	0 to 70 °C
	S.M. (30km)	SFP-FXS/LCI-30E					(-40 to 85 °C)
1000Base	SX (550m)	SFP-GSX/LC-AE	850 nm	-4 dBm ~ -9.5dBm	-18dBm (Min)	3.3V	0 to 70 °C
		SFP-GSX/LCI-AE					(-20 to 85 °C)
	LX (10 km)	SFP-GLX/LC-10E	1310 nm	-3 dBm ~ -9.5dBm	-20dBm (Min)	3.3V	0 to 70 °C
		SFP-GLX/LCI-10E					(-40 to 85 °C)
	LX (20 km)	SFP-GLX/LC-20E	1310 nm	-2 dBm ~ -8dBm	-23dBm (Min)	3.3V	0 to 70 °C
		SFP-GLX/LCI-20E					(-40 to 85 °C)
	LX (40 km)	SFP-GLX/LC-40E	1310 nm	+1 dBm ~ -4dBm	-24dBm (Min)	3.3V	0 to 70 °C
		SFP-GLX/LCI-40E					(-40 to 85 °C)
	XD (50km)	SFP-GXD/LC-50E	1550 nm	+1 dBm ~ -4dBm	-24dBm (Min)	3.3V	0 to 70 °C
		SFP-GXD/LCI-50E					(-40 to 85 °C)
	ZX (70km)	SFP-GZX/LC-70E	1550 nm	+5 dBm ~ 0dBm	-24dBm (Min)	3.3V	0 to 70 °C
		SFP-GZX/LCI-70E					(-40 to 85 °C)
	EZX (110km)	SFP-GZX/LC-110E	1550 nm	+5 dBm ~ 0dBm	-30dBm (Min)	3.3V	0 to 70 °C
		SFP-GZX/LCI-110E					(-40 to 85 °C)
RJ45 (100m)	SFP-GTX/RJ45-AE				3.3V	0 to 70 °C	
WDM (40km)	SFP-GWDM13SC-40E		TX 1310nm / RX 1550nm	+2 dBm ~ -3dBm	-23dBm (Min)	3.3V	0 to 70 °C
WDM (40km)	SFP-GWDM15SC-40E		TX 1550nm / RX 1310nm				0 to 70 °C



**Note:** Don't remove the SFP module plugs until you are ready to install the cables.

## Ordering Information

- **SFP-FXM/LC-AE** 100Base-FX Multi-mode SFP module
- **SFP-FXM/LCI-AE** 100Base-FX Multi-mode SFP module w/Wide temp
- **SFP-FXS/LC-30E** 100Base-FX Single-mode SFP module
- **SFP-FXS/LCI-30E** 100Base-FX Single-mode SFP module w/Wide temp
- **SFP-GSX/LC-AE** 1000Base-SX Multi-mode SFP module
- **SFP-GSX/LCI-AE** 1000Base-SX Multi-mode SFP module w/Wide temp
- **SFP-GLX/LC-10E** 1000Base-LX Single-mode SFP module (10 km)
- **SFP-GLX/LCI-10E** 1000Base-LX Single-mode SFP module (10 km) w/Wide temp
- **SFP-GLX/LC-20E** 1000Base-LX Single-mode SFP module (20 km)
- **SFP-GLX/LCI-20E** 1000Base-LX Single-mode SFP module (20 km) w/Wide temp
- **SFP-GLX/LC-40E** 1000Base-LX Single-mode SFP module (40 km)
- **SFP-GLX/LCI-40E** 1000Base-LX Single-mode SFP module (40 km) w/Wide temp
- **SFP-GXD/LC-50E** 1000Base-XD Single-mode SFP module (50 km)
- **SFP-GXD/LCI-50E** 1000Base-XD Single-mode SFP module (50 km) w/Wide temp
- **SFP-GZX/LC-70E** 1000Base-ZX Single-mode SFP module (70 km)
- **SFP-GZX/LCI-70E** 1000Base-ZX Single-mode SFP module (70 km) w/Wide temp
- **SFP-GZX/LC-110E** 1000Base-EZX Single-mode SFP module (110 km)
- **SFP-GZX/LCI-110E** 1000Base-EZX Single-mode SFP module (110 km) w/Wide temp
- **SFP-GTX/RJ45-AE** 1000Base RJ45 SFP module
- **SFP-GWDM13SC-40E** 1000Base-WDM (Trans:1310nm) SFP module (40 km)
- **SFP-GWDM15SC-40E** 1000Base-WDM (Trans:1550nm) SFP module (40 km)