



Chipsmall Limited consists of a professional team with an average of over 10 year of expertise in the distribution of electronic components. Based in Hongkong, we have already established firm and mutual-benefit business relationships with customers from,Europe,America and south Asia,supplying obsolete and hard-to-find components to meet their specific needs.

With the principle of "Quality Parts,Customers Priority,Honest Operation,and Considerate Service",our business mainly focus on the distribution of electronic components. Line cards we deal with include Microchip,ALPS,ROHM,Xilinx,Pulse,ON,Everlight and Freescale. Main products comprise IC,Modules,Potentiometer,IC Socket,Relay,Connector.Our parts cover such applications as commercial,industrial, and automotives areas.

We are looking forward to setting up business relationship with you and hope to provide you with the best service and solution. Let us make a better world for our industry!



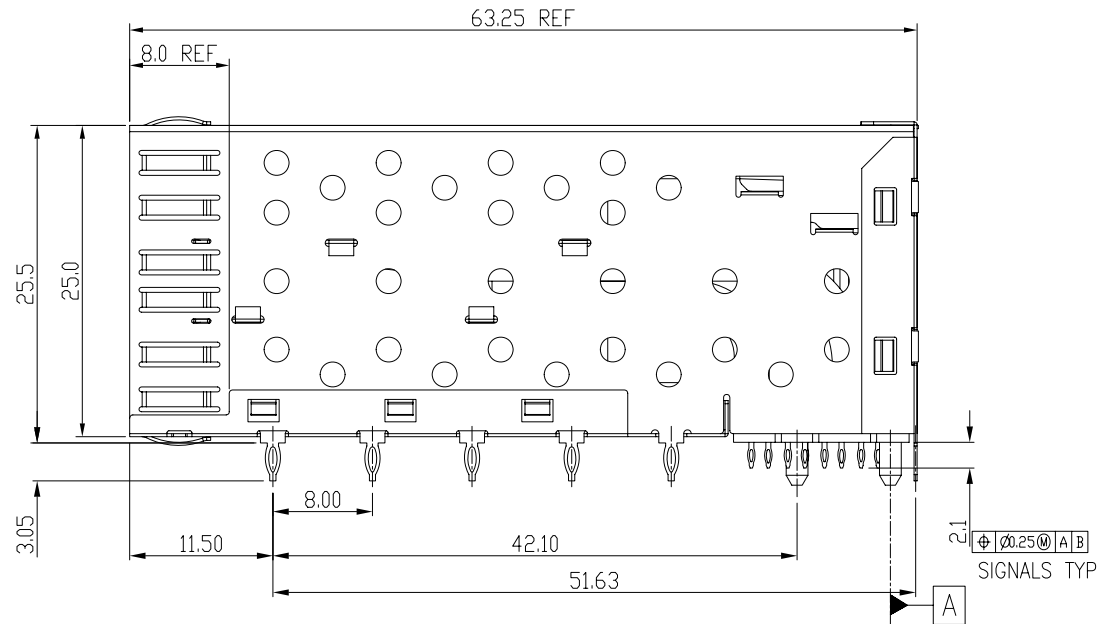
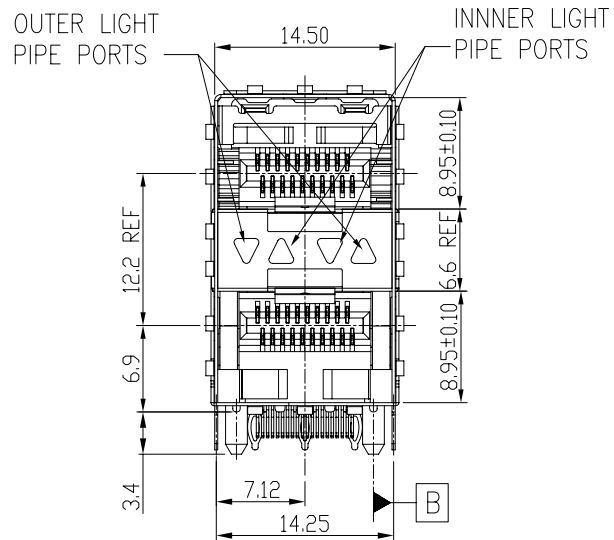
Contact us

Tel: +86-755-8981 8866 Fax: +86-755-8427 6832

Email & Skype: info@chipsmall.com Web: www.chipsmall.com

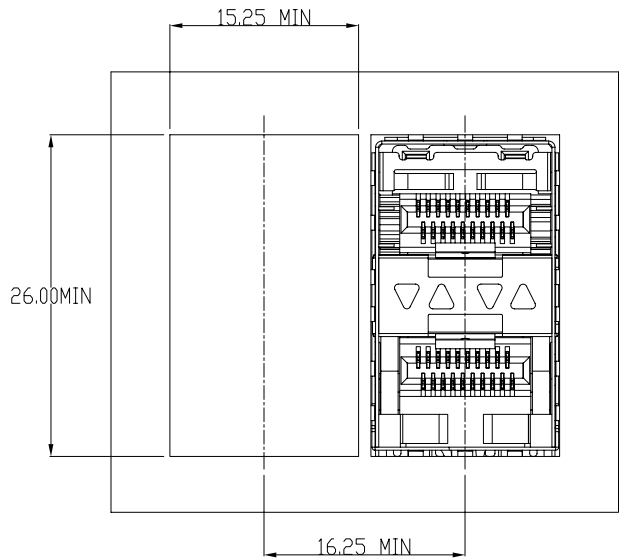
Address: A1208, Overseas Decoration Building, #122 Zhenhua RD., Futian, Shenzhen, China



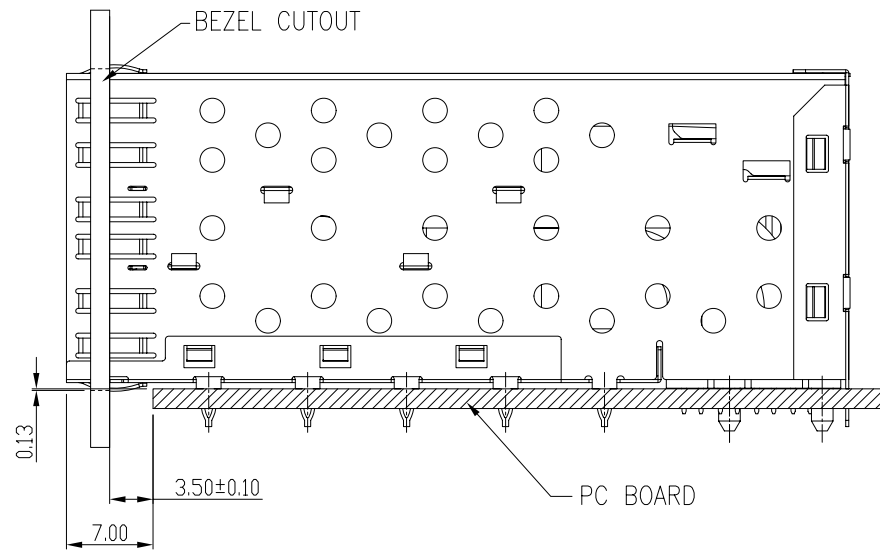


Qty Per:	TRAY	CARTON		
	16	96		
PART NUMBER	STATEMENT			
SFP0-3040-L	INNER/OUTER LIGHT PIPES			
No.	DESCRIPTION	Q'ty	MATERIAL	PLATING
01	SFP CAGE (Non-Logo)	1	COPPER ALLOY	NICKEL
02	CONNECTOR	1	HIGH TEMP/COPPER ALLOY	GOLD
03	LIGHT PIPE	1	POLYCARBONITE	

DETACHED LISTS	MM (INCH)	RoHS Compliant						
	TOLERANCES EXCEPT AS NOTED	TITLE				W/LIGHT PIPES		
	MM	±	SFP 2 BY 1 CAGE+CONNECTOR_P					
	.0 ± 0.25	±	DFTD Jack				DRAWING NO. CSFP0-3040-L	SIZE
.00 ± 0.2	±	DATE 4/19/10				/PART NO. SFP0-3040-L	A3	3
.000 ± 0.10	±	SCALE : 2:1				DO NOT SCALE DRAWING	SHEET 1	OF 4
ANGLES ± 0.5								
THIRD ANGLE PROJECTION								



BEZEL CUT-OUT CENTER SPACING DETAIL
BEZEL THICKNESS:0.8-2.6

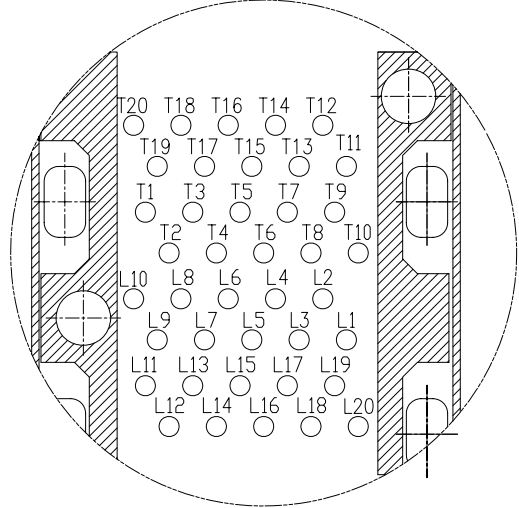
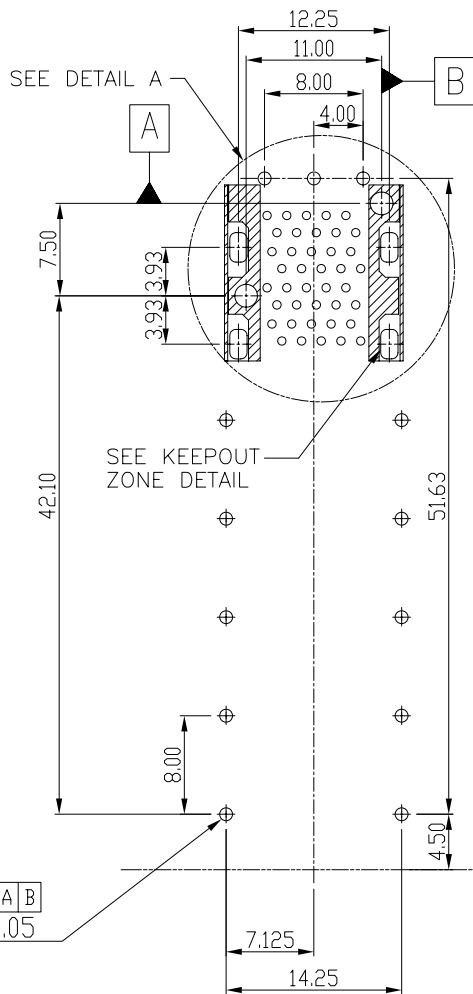
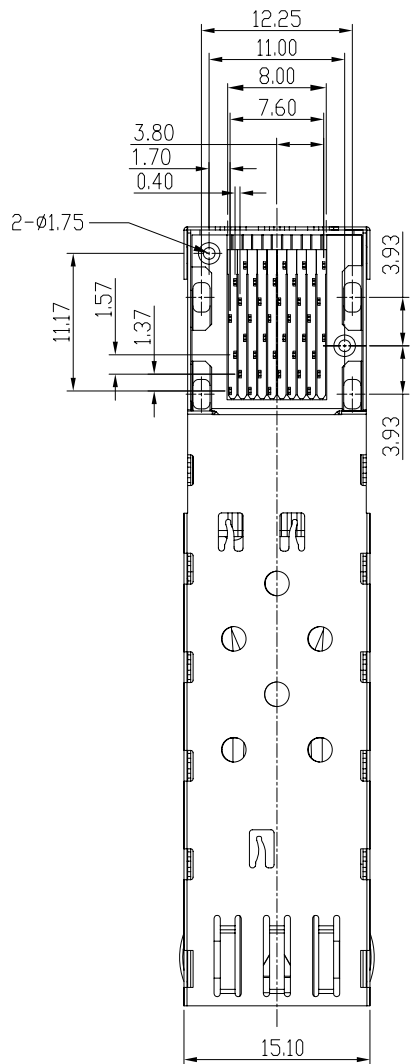


SECTION A-A

8 | 7 | 6 | 5 | 4 | 3 | 2 | 1

H
G
F
E
D
C
B
A

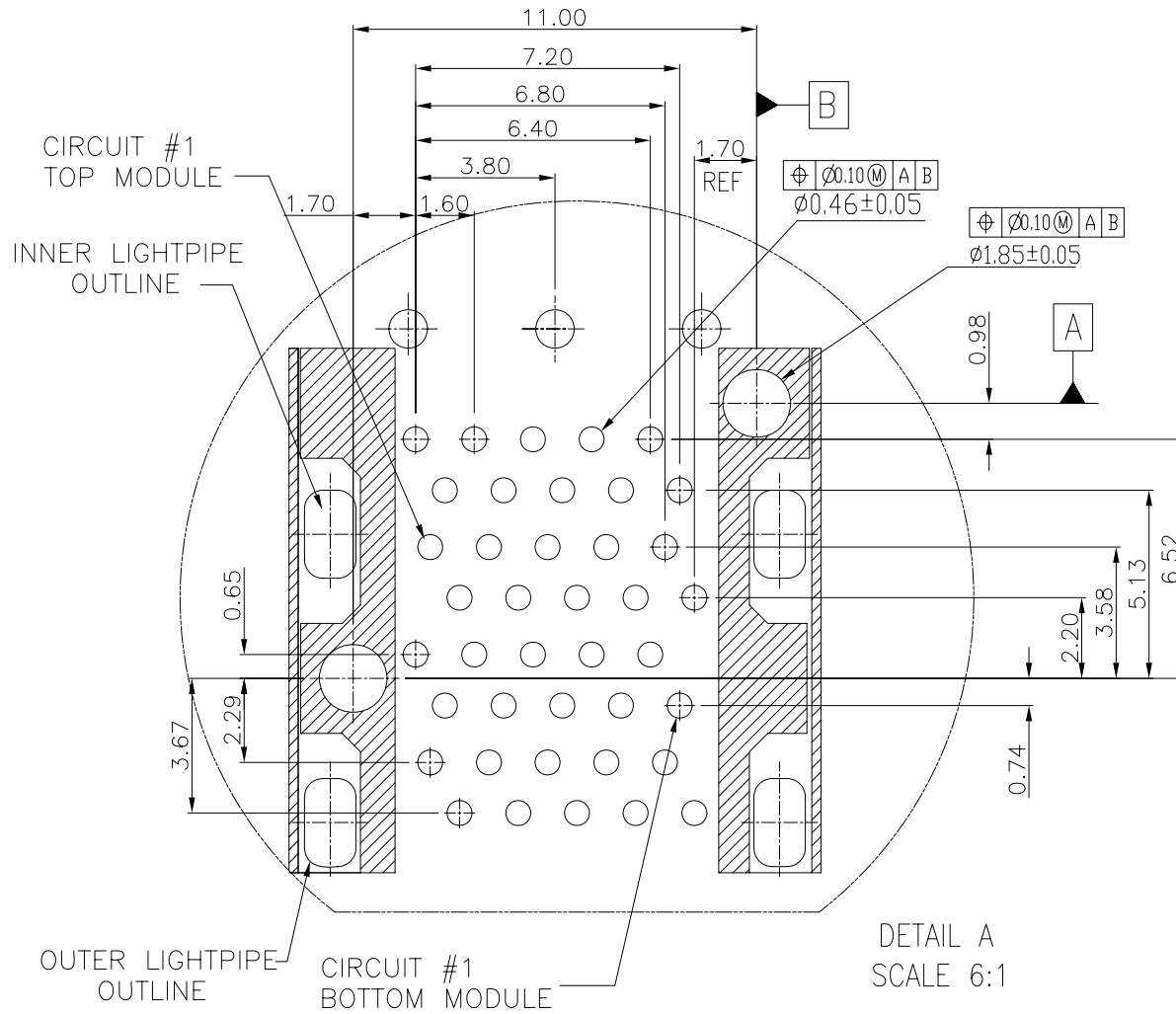
DETACHED LISTS	MM ← INCH →		RoHS Compliant			
	TOLERANCES EXCEPT AS NOTED					
	MM					
	.0 ± 0.25		±			
.00 ± 0.2		±				
.000 ± 0.10		±				
ANGLES ± 0.5						
		THIRD ANGLE PROJECTION				
DFTD Jack		DRAWING NO. CSFP0-3040-L		SIZE	REV	
DATE 4/19/10		/PART NO. SFP0-3040-L		A3	3	
SCALE : 2:1		DO NOT SCALE DRAWING		SHEET 2	OF 4	
TITLE			W/LIGHT PIPES			
SFP 2 BY 1 CAGE+CONNECTOR_P						



CONNECTOR PIN-OUT
COMPONENT SIDE OF BOARD

⊕ ⌀0.10 (M) A B
⌀1.05±0.05

MM (INCH)		RoHS Compliant			
TOLERANCES EXCEPT AS NOTED		TITLE SFP 2 BY 1 CAGE+CONNECTOR_P W/LIGHT PIPES			
DETACHED LISTS	MM	±	DATE 4/19/10		
	.0 ± 0.25	±	DRAWING NO. CSFP0-3040-L		
	.00 ± 0.2	±	/PART NO. SFPO-3040-L		
.000 ± 0.10	±	DD NOT SCALE DRAWING			
ANGLES ± 0.5		SCALE : 2:1		SIZE A3	REV 3
THIRD ANGLE PROJECTION		SHEET 3		OF 4	



DETAIL A
SCALE 6:1

MM (INCH)		RoHS Compliant			
TOLERANCES EXCEPT AS NOTED		TITLE SFP 2 BY 1 CAGE+CONNECTOR_P			
W/LIGHT PIPES		DFTD Jack DATE 4/19/10		DRAWING NO. CSFP0-3040-L /PART NO. SFPO-3040-L	
DETACHED LISTS		SCALE : 2:1		SIZE A3	
ANGLES ± 0.5		DO NOT SCALE DRAWING		REV 3	
THIRD ANGLE PROJECTION		SHEET 4		OF 4	