



Chipsmall Limited consists of a professional team with an average of over 10 year of expertise in the distribution of electronic components. Based in Hongkong, we have already established firm and mutual-benefit business relationships with customers from,Europe,America and south Asia,supplying obsolete and hard-to-find components to meet their specific needs.

With the principle of “Quality Parts,Customers Priority,Honest Operation,and Considerate Service”,our business mainly focus on the distribution of electronic components. Line cards we deal with include Microchip,ALPS,ROHM,Xilinx,Pulse,ON,Everlight and Freescale. Main products comprise IC,Modules,Potentiometer,IC Socket,Relay,Connector.Our parts cover such applications as commercial,industrial, and automotives areas.

We are looking forward to setting up business relationship with you and hope to provide you with the best service and solution. Let us make a better world for our industry!



## Contact us

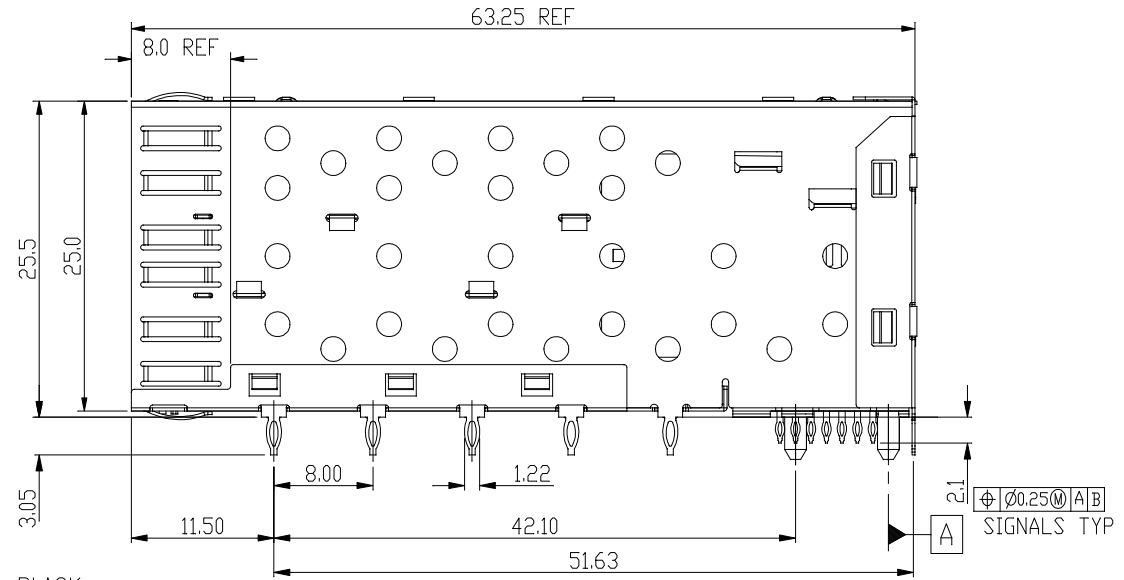
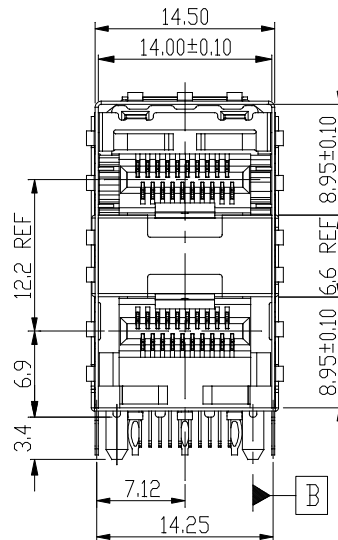
Tel: +86-755-8981 8866 Fax: +86-755-8427 6832

Email & Skype: info@chipsmall.com Web: www.chipsmall.com

Address: A1208, Overseas Decoration Building, #122 Zhenhua RD., Futian, Shenzhen, China



REVISION RECORD		
REV	DESCRIPTION	DRFT
9	UPDATE	Jack 7/19/11
10	Correct dim 1.7 to 1.9	Victor 10/31/12



NOTES:

- MATERIAL:  
CONNECTOR  
HOUSING: GLASS FILLED HIGH TEMPERATURE PLASTIC, UL94 V-0, BLACK  
TERMINALS: PHOS-BRONZE t=0.2mm .  
OVERMOLDED TERMINALS HOUSING: GLASS FILLED HIGH TEMPERATURE PLASTIC, UL94 V-0, BLACK.  
CAGE ASSEMBLY: PHOS-BRONZE t=0.25mm.
- FINISH:  
TERMINAL:  
1)50u" MIN NICKEL PLATING OVER ALL.  
2)COMPLIANT TAIL: 50u" TIN OVER 50u" MIN NICKEL.  
3)30u" MIN GOLD PLATING ON MATING AREA.  
CAGE: 50u" MIN NICKEL PLATING OVER ALL.
- PRESS FIT HOLES:  
CONTACT:  
1)HOLE DIAMETER AFTER PLATING: 0.55-0.65mm.  
2)DRILLED HOLE: 0.675-0.725mm  
CAGE:  
1)HOLE DIAMETER AFTER PLATING: 1.00-1.10mm.  
2)DRILLED HOLE: 1.125-1.175mm.
- RATING:  
1)VOLTAGE: 120V r.m.s  
2)CURRENT RATING: 0.5Amp. MAXIMUM PER INDIVIDUAL CONTACT.  
3)OPERATING TEMPERATURE: -55° C TO 85° C  
4)INSULATION RESISTANCE: 1000 mega-ohms Min.

Qty Per:	TRAY	CARTON
	16	96

DETACHED LISTS	<div style="display: flex; justify-content: space-around;"> <span>← MM</span> <span>→ (INCH)</span> </div> <p>TOLERANCES EXCEPT AS NOTED</p> <table border="1"> <tr> <td>MM</td> <td>±</td> </tr> <tr> <td>.0 ± 0.25</td> <td>±</td> </tr> <tr> <td>.00 ± 0.20</td> <td>±</td> </tr> <tr> <td>.000 ± 0.10</td> <td>±</td> </tr> </table> <p>ANGLES ± 0.5</p>	MM	±	.0 ± 0.25	±	.00 ± 0.20	±	.000 ± 0.10	±	<b>RoHS Compliant</b>		<b>Pulse Electronics</b>	
	MM	±											
	.0 ± 0.25	±											
	.00 ± 0.20	±											
.000 ± 0.10	±												
TITLE				W/O MIDDLE PINS									
SFP 2 BY 1 CAGE+CONNECTOR_S				SIZE	REV								
<p>THIRD ANGLE PROJECTION</p>		DFTD Yicqn DATE 8/26/10'		DRAWING NO. CSFP013-L /PART NO. SFP013-L									
SCALE : 2:1		DO NOT SCALE DRAWING		SHEET 1	OF 3								

8

7

6

5

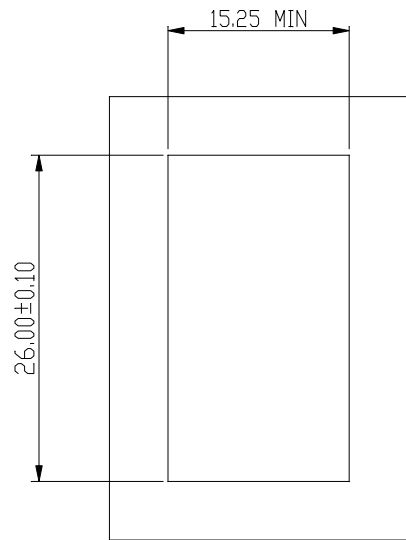
4

3

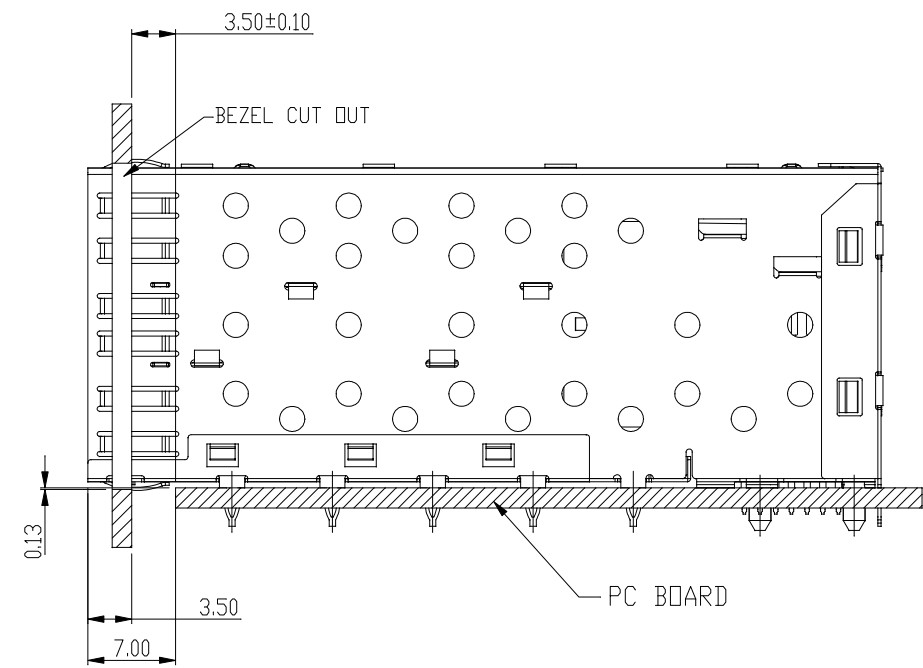
2

1

REVISION RECORD		
REV	DESCRIPTION	DRFT
9	UPDATE	Jack 7/19/11
10	Correct dim 1.7 to 1.9	Victor 10/31/12



BEZEL CUT-OUT CENTER SPACING DETAIL  
BEZEL THICKNESS:0.8-2.6



MM (INCH)	
TOLERANCES EXCEPT AS NOTED	
MM	±
.0 ± 0.25	±
.00 ± 0.20	±
.000 ± 0.10	±
ANGLES ± 0.5	
THIRD ANGLE PROJECTION	

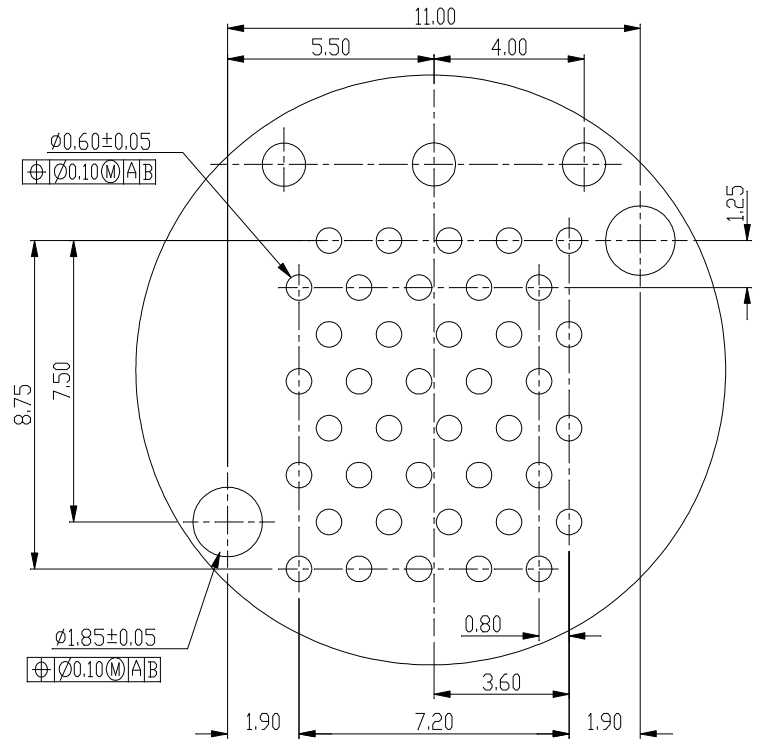
**RoHS Compliant**



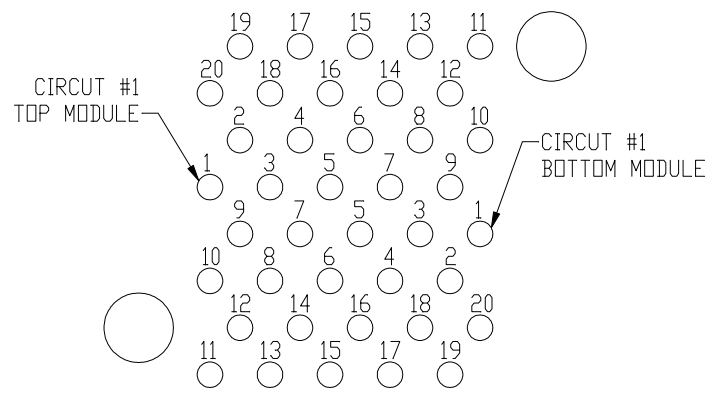
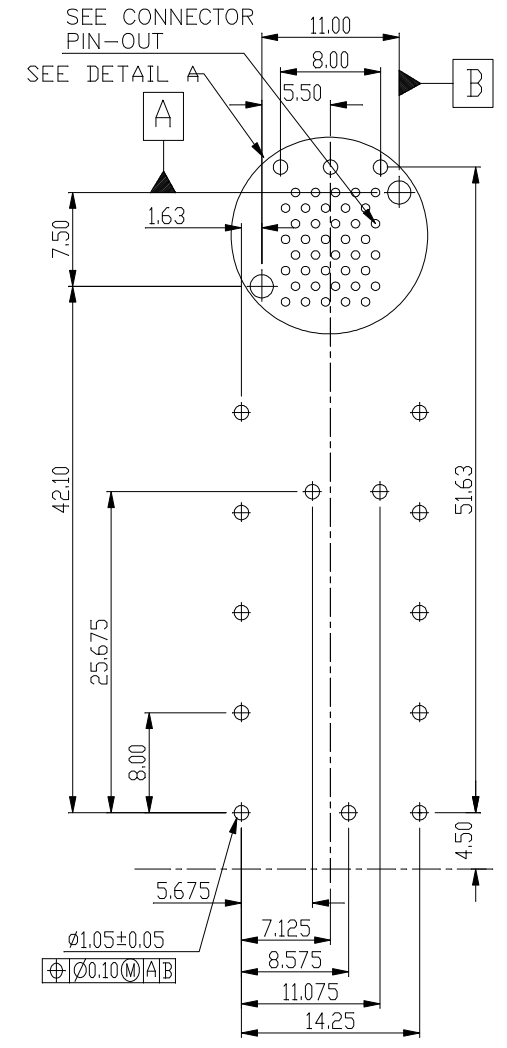
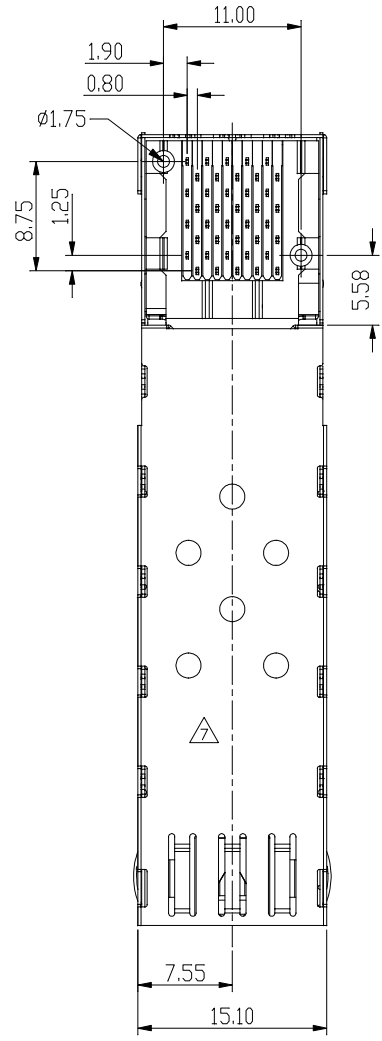
TITLE: SFP 2 BY 1 CAGE+CONNECTOR\_S W/O MIDDLE PINS

DFTD Yican	DRAWING NO. CSFP013-L	SIZE	REV
DATE 8/26/10'	/PART NO. SFP013-L	A3	10
SCALE: 2:1		DO NOT SCALE DRAWING	
SHEET 2		OF 3	

REVISION RECORD		
REV	DESCRIPTION	DRFT
9	UPDATE	Jack 7/19/11
10	Correct dim 1.7 to 1.9	Victron 10/31/12



DETAIL A  
SCALE 6:1



CONNECTOR PIN-OUT  
COMPONENT SIDE OF BOARD

DETACHED LISTS	MM (INCH)	
	TOLERANCES EXCEPT AS NOTED	
	MM	±
	.0 ± 0.25	±
	.00 ± 0.20	±
	.000 ± 0.10	±
ANGLES ± 0.5		
THIRD ANGLE PROJECTION		

**RoHS Compliant**



TITLE: SFP 2 BY 1 CAGE+CONNECTOR\_S  
W/D MIDDLE PINS

DFTD Vicon	DRAWING NO. CSFP013-L	SIZE	REV
DATE 8/26/10'	/PART NO. SFP013-L	A3	10
SCALE: 2:1	DO NOT SCALE DRAWING	SHEET 3	OF 3