



Chipsmall Limited consists of a professional team with an average of over 10 year of expertise in the distribution of electronic components. Based in Hongkong, we have already established firm and mutual-benefit business relationships with customers from,Europe,America and south Asia,supplying obsolete and hard-to-find components to meet their specific needs.

With the principle of “Quality Parts,Customers Priority,Honest Operation,and Considerate Service”,our business mainly focus on the distribution of electronic components. Line cards we deal with include Microchip,ALPS,ROHM,Xilinx,Pulse,ON,Everlight and Freescale. Main products comprise IC,Modules,Potentiometer,IC Socket,Relay,Connector.Our parts cover such applications as commercial,industrial, and automotives areas.

We are looking forward to setting up business relationship with you and hope to provide you with the best service and solution. Let us make a better world for our industry!



Contact us

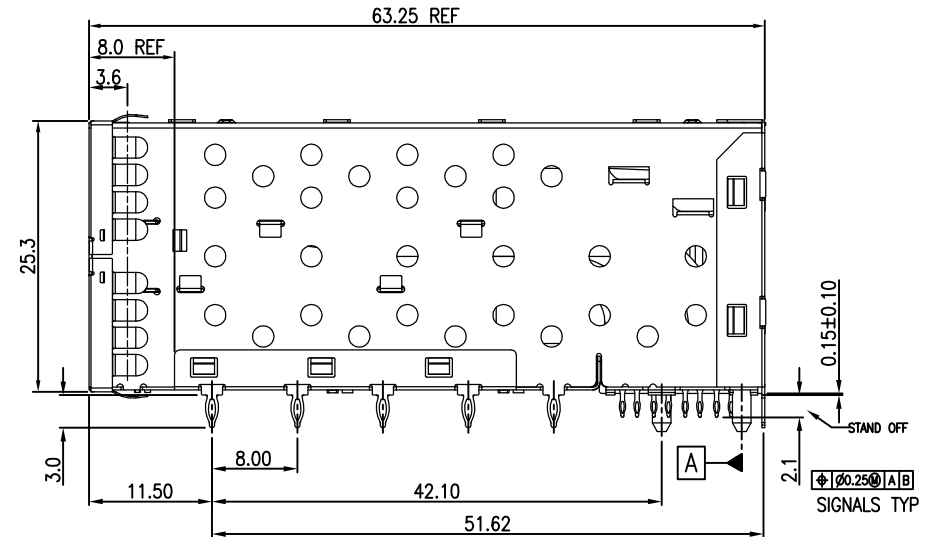
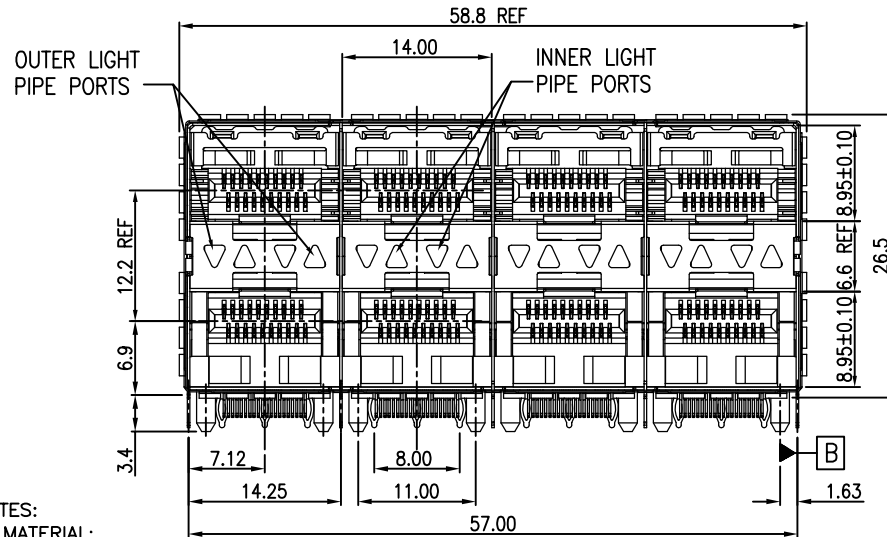
Tel: +86-755-8981 8866 Fax: +86-755-8427 6832

Email & Skype: info@chipsmall.com Web: www.chipsmall.com

Address: A1208, Overseas Decoration Building, #122 Zhenhua RD., Futian, Shenzhen, China



REVISION RECORD		
REV	DESCRIPTION	DRFT
11	EXTEND MIDDLE METAL SPACER (DIM0.15) CONTROL METAL SPACER POSITION (DIM1.5)	Revuzo 8/05/13



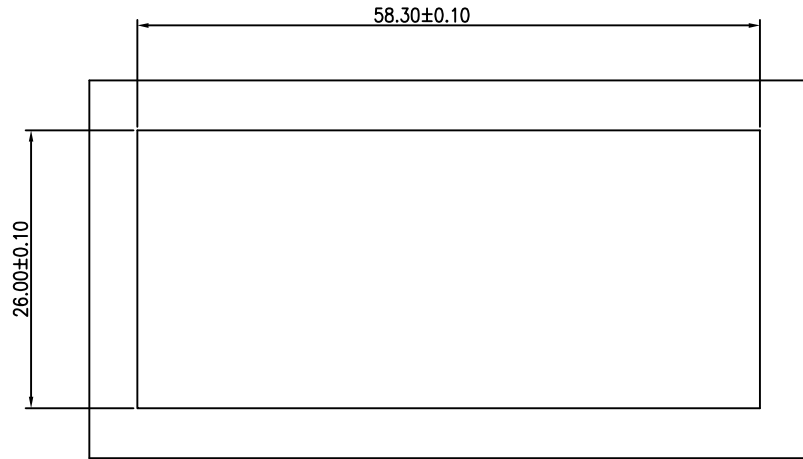
- NOTES:
- MATERIAL:
CONNECTOR
HOUSING: GLASS FILLED LCP, UL94 V-0, BLACK
TERMINALS: PHOS-BRONZE t=0.2mm .
OVERMOLDED TERMINALS HOUSING: GLASS FILLED LCP, UL94 V-0, BLACK
CAGE ASSEMBLY: COPPER-NICKEL-ZINC ALLOY t=0.25mm.
LIGHT PIPES: POLYCARBONITE UL94V-0, CLEAR.
 - FINISH:
TERMINAL:
1)50u" MIN NICKEL PLATING OVER ALL.
2)COMPLIANT TAIL: 50u" TIN OVER 50u" MIN NICKEL.
3)30u" MIN GOLD PLATING ON MATING AREA.
 - PRESS FIT HOLES:
CONTACT:
1)HOLE DIAMETER AFTER PLATING: 0.41-0.51mm.
2)DRILLED HOLE: 0.535-0.585mm
CAGE:
1)HOLE DIAMETER AFTER PLATING: 1.00-1.10mm.
2)DRILLED HOLE: 1.125-1.175mm.
 - RATING:
1)VOLTAGE: 120V r.m.s
2)CURRENT RATING: 0.5Amp. MAXIMUM PER INDIVIDUAL CONTACT.
3)OPERATING TEMPERATURE: -55°C TO 85°C
4)INSULATION RESISTANCE: 1000 mega-ohms Min.

Qty Per:	TRAY	CARTON
	3	18

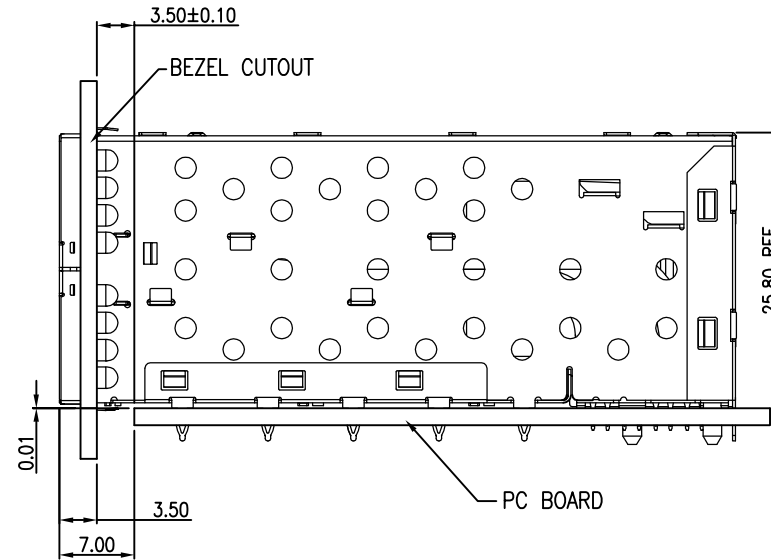
		RoHS Compliant			
TOLERANCES EXCEPT AS NOTED MM .0 ± 0.25 ± .00 ± 0.20 ± .000 ± 0.10 ±		TITLE METAL GASKET SFP PLUS 2 BY 4 CAGE+CONNECTOR_P			
ANGLES ± 1° 		DFTO : JACK DATE : 10/15/10 SCALE : 1:1		DRAWING NO. CSFPP014-L /PART NO. SFPP014-L DO NOT SCALE DRAWING	
DETACHED LISTS		SIZE A3		REV 11	
		SHEET 1 OF 4			

8 | 7 | 6 | 5 | 4 | 3 | 2 | 1

REVISION RECORD		
REV	DESCRIPTION	DRFT
11	EXTEND MIDDLE METAL SPACER (DIM0.15) CONTROL METAL SPACER POSITION (DIM1.5)	Royzuo 6/05/13'



BEZEL CUT-OUT CENTER SPACING DETAIL
BEZEL THICKNESS:0.8-2.6



DETACHED LISTS			RoHS Compliant			
	TOLERANCES EXCEPT AS NOTED					
	MM	±	TITLE METAL GASKET SFP PLUS 2 BY 4 CAGE+CONNECTOR_P			
	.0 ± 0.25	±				
.00 ± 0.20	±					
.000 ± 0.10	±	ANGLES ± 1° 		DFTO : JACK DATE : 10/15/10 SCALE : 1:1	DRAWING NO. CSFPP014-L /PART NO. SFPP014-L	SIZE A3 REV 11
THIRD ANGLE PROJECTION				DO NOT SCALE DRAWING		SHEET 2 OF 4

8

7

6

5

4

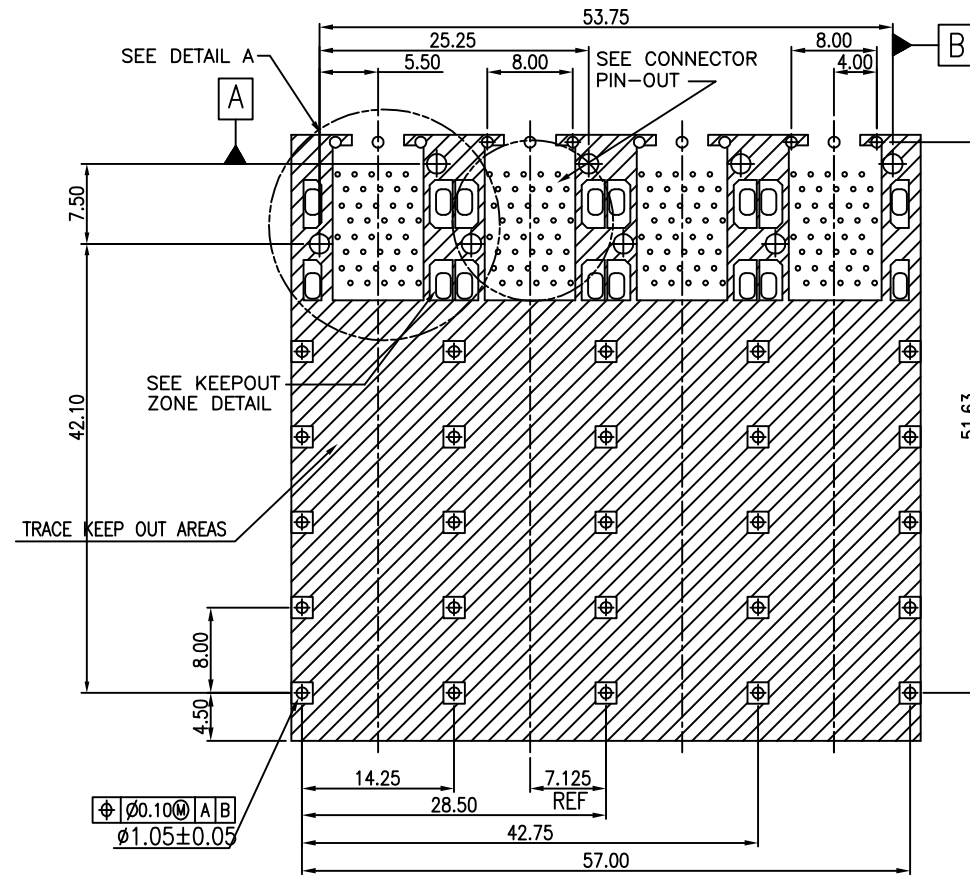
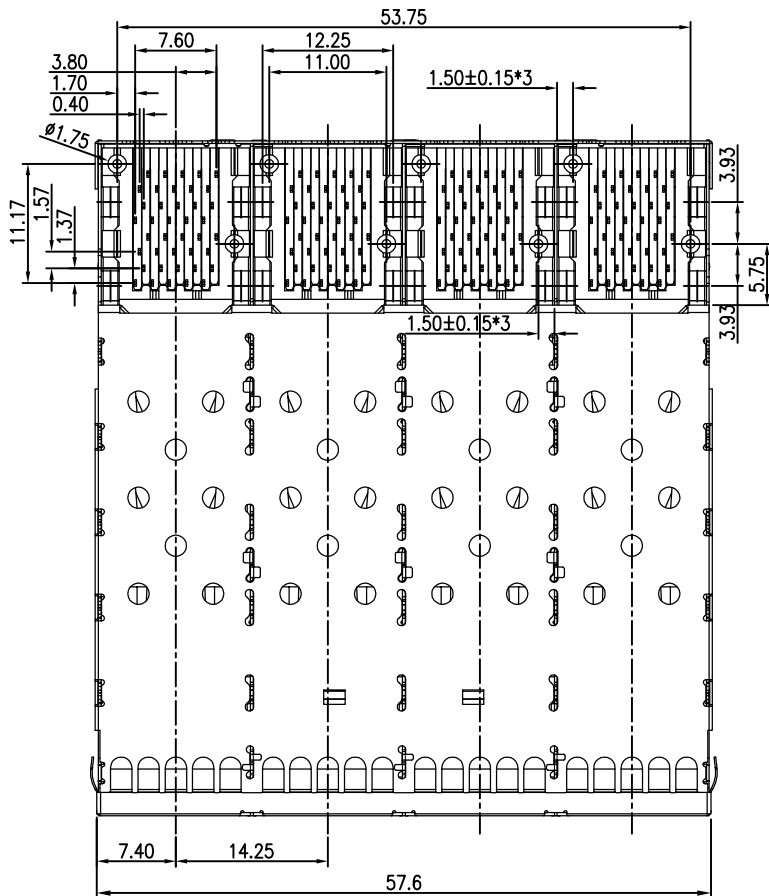
3

2

1

H
G
F
E
D
C
B
A

REVISION RECORD		
REV	DESCRIPTION	DRFT
11	EXTEND MIDDLE METAL SPACER (DIM0.15) CONTROL METAL SPACER POSITION (DIM1.5)	Royzuo 6/05/13'

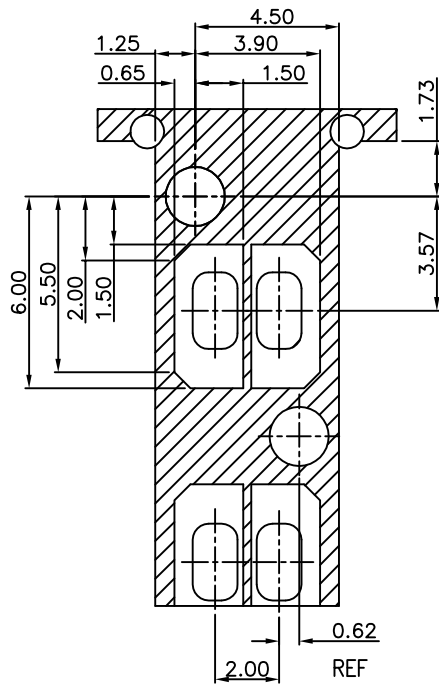


MM (INCH)		RoHS Compliant		Pulse Electronics	
TOLERANCES EXCEPT AS NOTED		TITLE METAL GASKET			
MM		SFP PLUS 2 BY 4 CAGE+CONNECTOR_P		SIZE	REV
.0 ± 0.25	±			A3	11
.00 ± 0.20	±				
.000 ± 0.10	±				
ANGLES ± 1°		DFTO : JACK	DRAWING NO. CSFPP014-L		
THIRD ANGLE PROJECTION		DATE : 10/15/10	/PART NO. SFPP014-L		
		SCALE : 1:1	DO NOT SCALE DRAWING		SHEET 3 OF 4

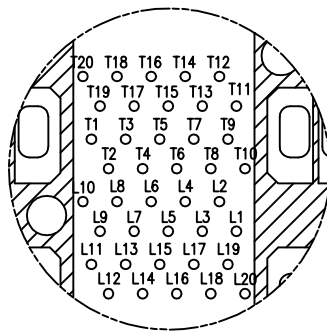
8 7 6 5 4 3 2 1

H
G
F
E
D
C
B
A

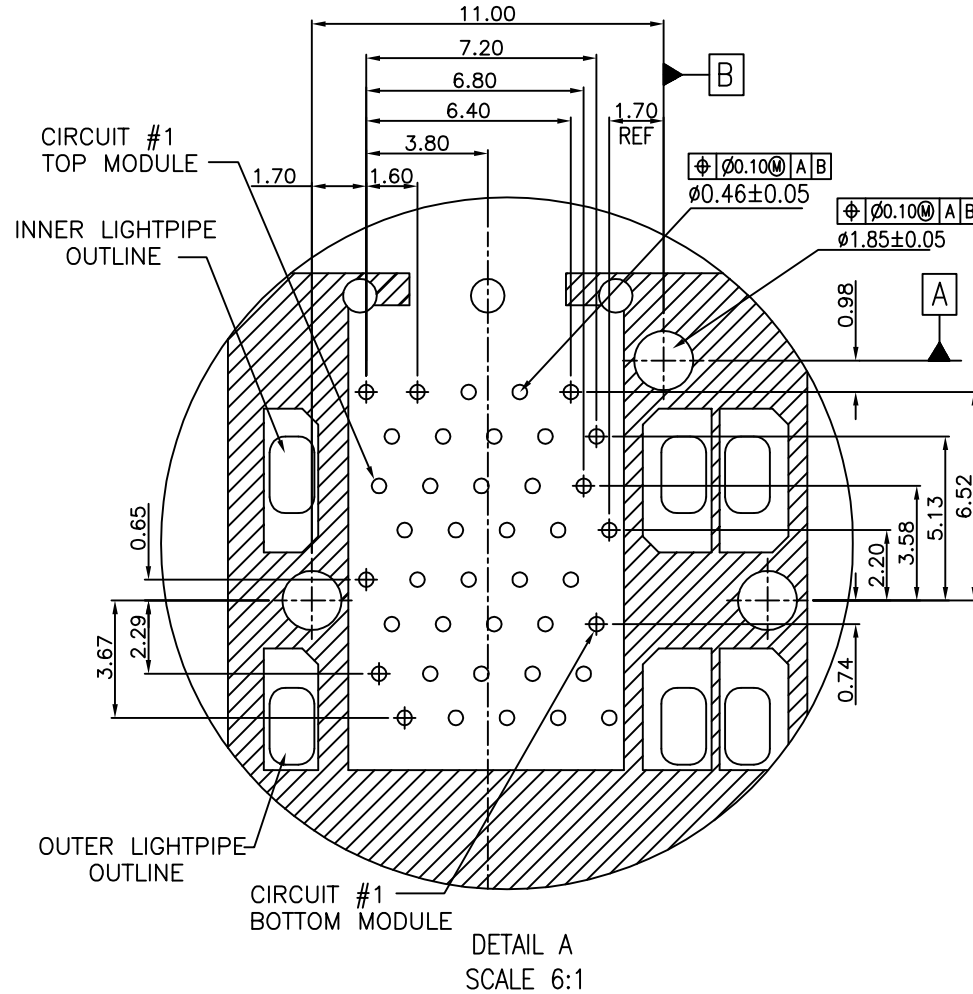
REVISION RECORD		
REV	DESCRIPTION	DRFT
11	EXTEND MIDDLE METAL SPACER (DIM0.15) CONTROL METAL SPACER POSITION (DIM1.5)	Royzuo 6/05/13'



KEEP-OUT ZONE DETAIL
SCALE 6:1



CONNECTOR PIN-OUT
COMPONENT SIDE OF BOARD



NOTES: LED PROFILE (0603)
HEIGHT: 0.6mm~0.8mm
VIEW ANGLE: $\leq 120^\circ$

		RoHS Compliant			
TOLERANCES EXCEPT AS NOTED .0 ± 0.25 ± .00 ± 0.20 ± .000 ± 0.10 ±		TITLE: SFP PLUS 2 BY 4 CAGE+CONNECTOR_P METAL GASKET			
ANGLES ± 1° 		DFTO : JACK DATE : 10/15/10 SCALE : 1:1		DRAWING NO. CSFPP014-L /PART NO. SFPP014-L DO NOT SCALE DRAWING	
DETACHED LISTS		SIZE A3 REV 11		SHEET 4 OF 4	