



Chipsmall Limited consists of a professional team with an average of over 10 year of expertise in the distribution of electronic components. Based in Hongkong, we have already established firm and mutual-benefit business relationships with customers from,Europe,America and south Asia,supplying obsolete and hard-to-find components to meet their specific needs.

With the principle of "Quality Parts,Customers Priority,Honest Operation,and Considerate Service",our business mainly focus on the distribution of electronic components. Line cards we deal with include Microchip,ALPS,ROHM,Xilinx,Pulse,ON,Everlight and Freescale. Main products comprise IC,Modules,Potentiometer,IC Socket,Relay,Connector.Our parts cover such applications as commercial,industrial, and automotives areas.

We are looking forward to setting up business relationship with you and hope to provide you with the best service and solution. Let us make a better world for our industry!



## Contact us

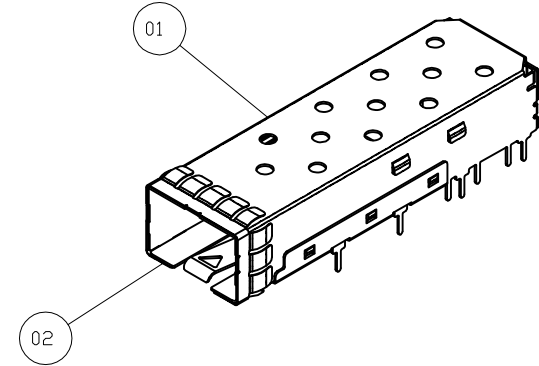
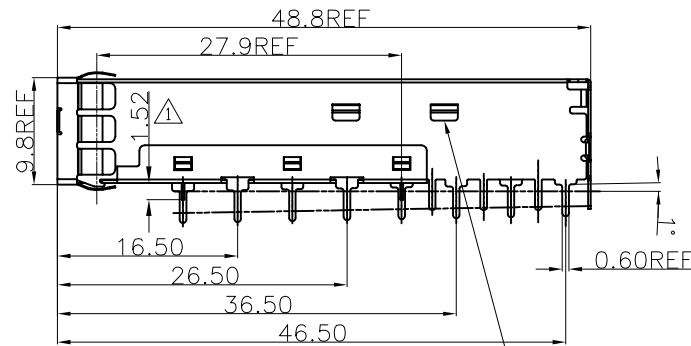
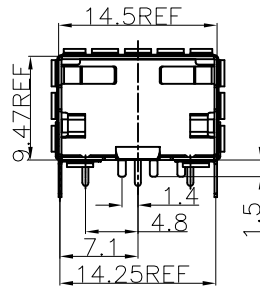
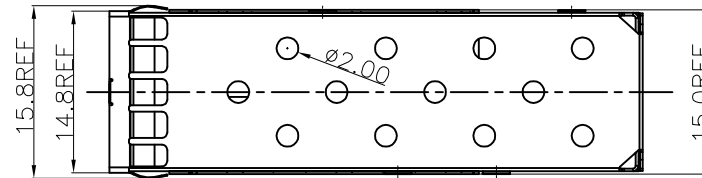
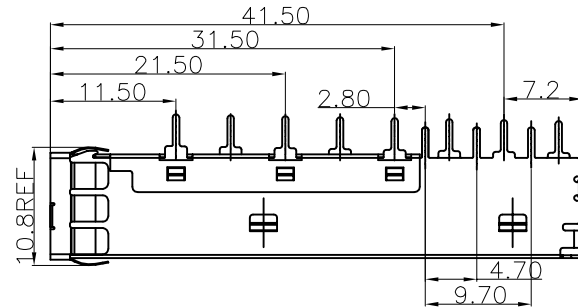
Tel: +86-755-8981 8866 Fax: +86-755-8427 6832

Email & Skype: info@chipsmall.com Web: www.chipsmall.com

Address: A1208, Overseas Decoration Building, #122 Zhenhua RD., Futian, Shenzhen, China



REVISION RECORD		
REV	DESCRIPTION	DRFT
1	UPDATE DIM	Jack 8/05/11'
2	MODIFY NI PLATING SPEC.	Jack 11/11/11'
3	ADD DIMENSION 1.50	Roy 7/03/13'



TABS USED TO MOUNT LIGHT PIPE

NOTE:

- | 1. DESCRIPTION                | Q'ty | MATERIAL | PLATING     |
|-------------------------------|------|----------|-------------|
| 01 SFP TOP CAGE (Non-Logo)    | 1PCS | COPPER   | MATT NICKLE |
| 02 SFP BOTTOM CAGE (Non-Logo) | 1PCS | COPPER   | MATT NICKLE |
2. PLATED: PLATED NICKEL 50u"-350u" Max
3. TEMPERATURE:  
 OPERATION: -40°C~ +85°C  
 STORAGE: -40°C~ +85°C
4. RoHS COMPLIANT

PART NUMBER
SFPPCAGE001-02-L

DETACHED LISTS	MM (INCH)	<b>RoHS Compliant</b>	<b>Pulse Electronics</b>	<b>FULL RISE ELECTRONIC CO., LTD</b>
	TOLERANCES EXCEPT AS NOTED	DFTD PETER	DATE 6/11/08'	TITLE THROUGH HOLE
	MM .0 ± 0.25 .00 ± 0.20 .000 ± 0.10	CHKD	DATE	TITLE EMI SFP CAGE ENHANCED FOR PCI
	ANGLES ± 0.5°	APPLV	DATE	DRAWING NO. CSFPPCAGE001-02-L SIZE A3 REV 3 /PART NO. SFPPCAGE001-02-L
THIRD ANGLE PROJECTION	SCALE: 1:1	DO NOT SCALE DRAWING		SHEET 1 OF 2

8

7

6

5

4

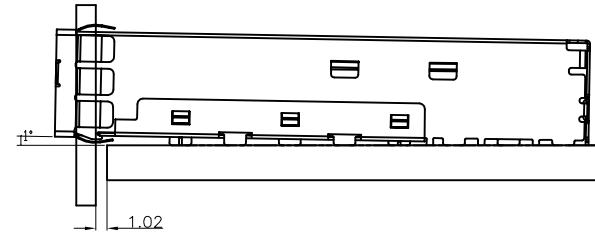
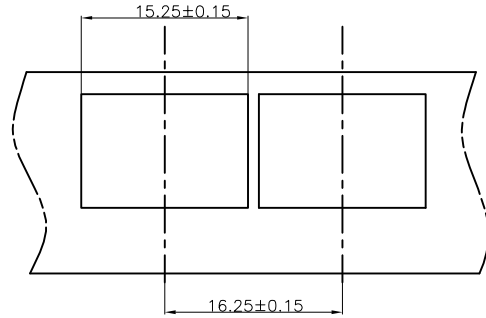
3

2

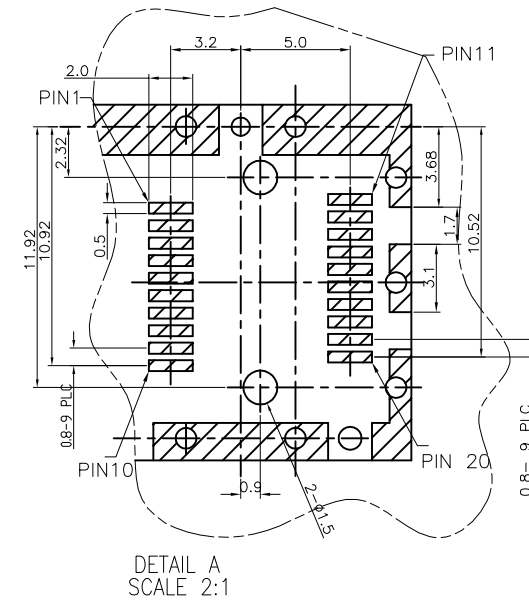
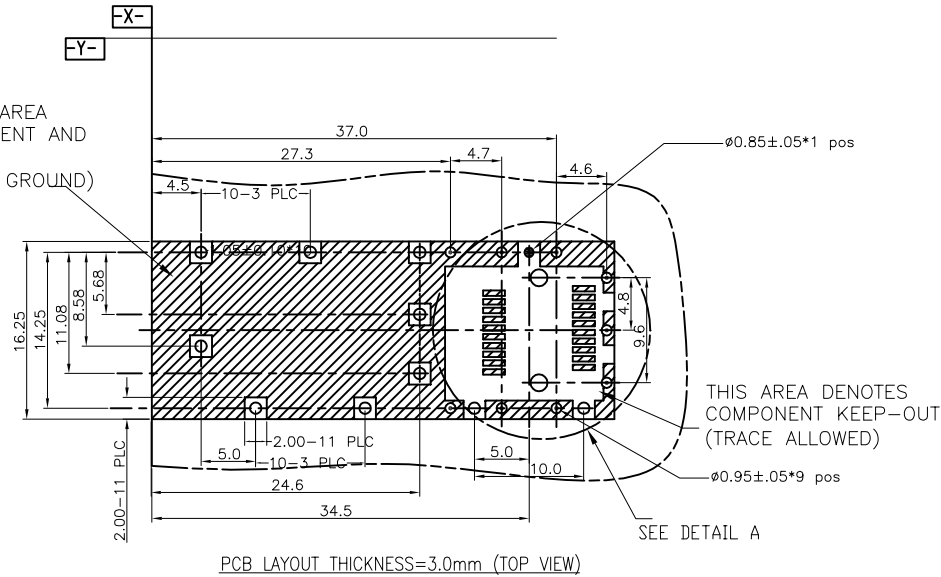
1

H  
G  
F  
E  
D  
C  
B  
A

REVISION RECORD		
REV	DESCRIPTION	DRFT
1	UPDATE DIM	Jack 8/05/11'
2	MODIFY NI PLATING SPEC.	Jack 11/11/11'
3	ADD DIMENSION 1.50	Roy 7/03/13'



CROSS-HATCHED AREA  
DENOTES COMPONENT AND  
TRACE KEEP-OUT  
(EXCEPT CHASSIS GROUND)



- ⊗  $\phi 1.05 * 10$
- $\phi 0.95 * 9$
- $\phi 0.85 * 1$

Suggestion: Through hole is  $\phi 0.85 +0.05/-0$

		<b>RoHS Compliant</b>		<b>Pulse Electronics</b>		FULL RISE ELECTRONIC CO., LTD	
TOLERANCES EXCEPT AS NOTED		DFTO PETER	DATE 6/11/08'	TITLE THROUGH HOLE			
MM		CHKD	DATE	DRAWING NO. CSFPFCAGE001-02-L			
.0 ± 0.25	±	APPL	DATE	/PART NO. SFPPFCAGE001-02-L		SIZE A3	REV 3
.00 ± 0.20	±			DO NOT SCALE DRAWING			
.000 ± 0.10	±			SHEET 2 OF 2			
ANGLES ± 0.5°							
		SCALE: 1:1					