



Chipsmall Limited consists of a professional team with an average of over 10 year of expertise in the distribution of electronic components. Based in Hongkong, we have already established firm and mutual-benefit business relationships with customers from,Europe,America and south Asia,supplying obsolete and hard-to-find components to meet their specific needs.

With the principle of “Quality Parts,Customers Priority,Honest Operation,and Considerate Service”,our business mainly focus on the distribution of electronic components. Line cards we deal with include Microchip,ALPS,ROHM,Xilinx,Pulse,ON,Everlight and Freescale. Main products comprise IC,Modules,Potentiometer,IC Socket,Relay,Connector.Our parts cover such applications as commercial,industrial, and automotives areas.

We are looking forward to setting up business relationship with you and hope to provide you with the best service and solution. Let us make a better world for our industry!



Contact us

Tel: +86-755-8981 8866 Fax: +86-755-8427 6832

Email & Skype: info@chipsmall.com Web: www.chipsmall.com

Address: A1208, Overseas Decoration Building, #122 Zhenhua RD., Futian, Shenzhen, China



REGULATING PULSE WIDTH MODULATOR

DESCRIPTION

The SG1526B is a high-performance pulse width modulator for switching power supplies which offers improved functional and electrical characteristics over the industry-standard SG1526. A direct pin-for-pin replacement for the earlier device with all its features, it incorporates the following enhancements: a bandgap reference circuit for improved regulation and drift characteristics, improved undervoltage lockout, lower temperature coefficients on oscillator frequency and current-sense threshold, tighter tolerance on softstart time, much faster **SHUTDOWN** response, improved double-pulse suppression logic for higher speed operation, and an improved output driver design with low shoot-through current, and faster rise and fall times. This versatile device can be used to implement single-ended or push-pull switching regulators of either polarity, both transformerless and transformer-coupled. The SG1526B is specified for operation over the full military ambient temperature range of -55°C to 150°C . The SG2526B is characterized for the industrial range of -25°C to 150°C , and the SG3526B is designed for the commercial range of 0°C to 125°C .

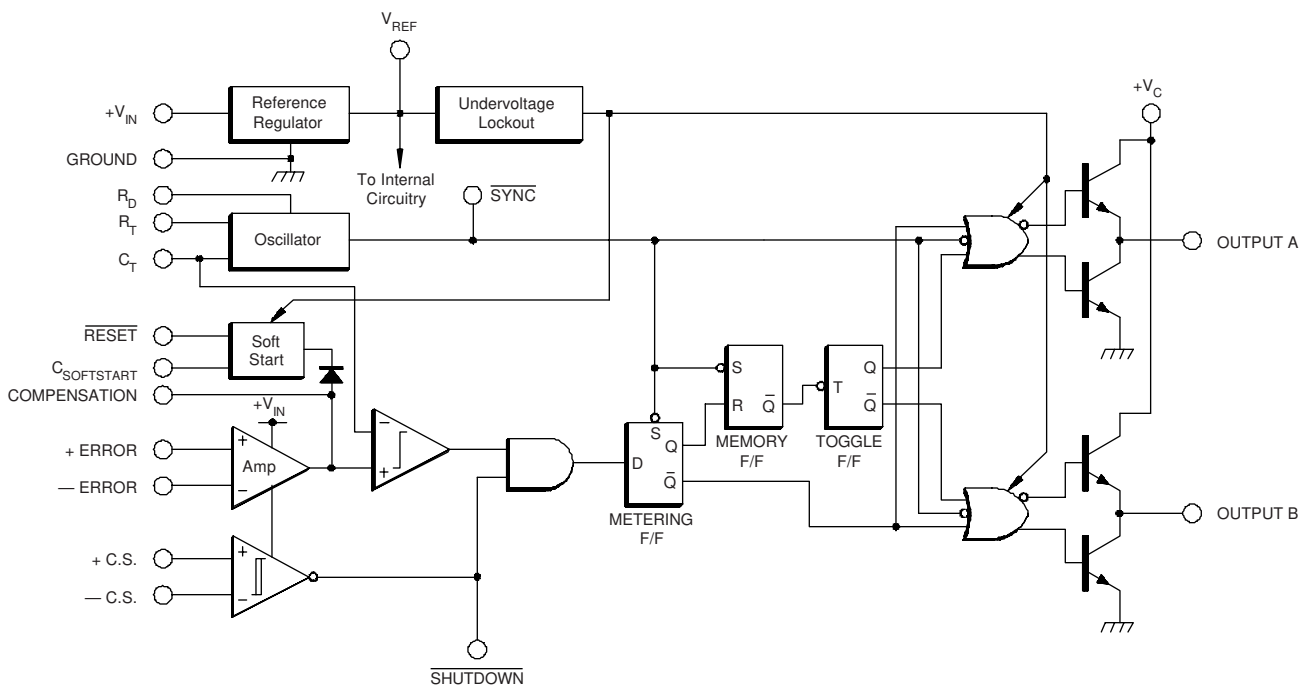
FEATURES

- 8V to 35V Operation
- 5V Low drift 1% Bandgap Reference
- 1Hz to 500kHz Oscillator Range
- Dual 100mA Source/Sink
- Digital Current Limiting
- Double Pulse Suppression
- Programmable Deadtime
- Improved Undervoltage Lockout
- Single Pulse Metering
- Programmable Soft-start
- Wide current Limit Common Mode Range
- TTL/CMOS Compatible Logic Ports
- Symmetry Correction Capability
- Guaranteed 6 Unit Synchronization
- Shoot-through Currents Less than 100mA
- Improved Shutdown Delay
- Improved Rise and Fall Time

HIGH RELIABILITY FEATURES

- Available To MIL-STD-883, ¶ 1.2.1
- Available to DSCC - Standard Microcircuit Drawing (SMD)
- MIL-M38510/12603BVA - SG1526BJ-JAN
- Radiation data available
- MSC-AMS Level "S" Processing Available

BLOCK DIAGRAM



ABSOLUTE MAXIMUM RATINGS (Note 1)

| | |
|--|-------------------|
| Input Voltage (V_{IN}) | 40V |
| Collector Supply Voltage (V_C) | 40V |
| Logic Inputs | -0.3V to 5.5V |
| Analog Inputs | -0.3V to V_{IN} |
| Source/Sink Load Current (each output) | 200mA |
| Reference Load Current | 50mA |

| | |
|--|----------------|
| Logic Sink Current | 15mA |
| Operating Junction Temperature | |
| Hermetic (J, L Packages) | 150°C |
| Plastic (N, DW Packages) | 150°C |
| Storage Temperature Range | -65°C to 150°C |
| Lead Temperature (Soldering, 10 Seconds) | 300°C |
| RoHS Peak Package Solder Reflow Temp. (40 sec. max. exp.)..... | 260°C (+0, -5) |

Note 1. Exceeding these ratings could cause damage to the device.

THERMAL DATA

J Package:

| | |
|---|--------|
| Thermal Resistance-Junction to Case, θ_{JC} | 25°C/W |
| Thermal Resistance-Junction to Ambient, θ_{JA} | 70°C/W |

N Package:

| | |
|---|--------|
| Thermal Resistance-Junction to Case, θ_{JC} | 30°C/W |
| Thermal Resistance-Junction to Ambient, θ_{JA} | 60°C/W |

DW Package:

| | |
|---|--------|
| Thermal Resistance-Junction to Case, θ_{JC} | 35°C/W |
| Thermal Resistance-Junction to Ambient, θ_{JA} | 90°C/W |

L Package:

| | |
|---|---------|
| Thermal Resistance-Junction to Case, θ_{JC} | 35°C/W |
| Thermal Resistance-Junction to Ambient, θ_{JA} | 120°C/W |

Note A. Junction Temperature Calculation: $T_J = T_A + (P_D \times \theta_{JA})$.

Note B. The above numbers for θ_{JC} are maximums for the limiting thermal resistance of the package in a standard mounting configuration. The θ_{JA} numbers are meant to be guidelines for the thermal performance of the device/pc-board system. All of the above assume no ambient airflow.

RECOMMENDED OPERATING CONDITIONS (Note 2)

| | |
|--|------------------------------|
| Input Voltage | 8V to 35V |
| Collector Supply Voltage | 4.5V to 35V |
| Sink/Source Load Current (each output) | 0 to 100mA |
| Reference Load Current | 0 to 20mA |
| Oscillator Frequency Range | 1Hz to 500kHz |
| Oscillator Timing Resistor | 2k Ω to 150k Ω |

| | |
|---|---------------------|
| Oscillator Timing Capacitor | 470pF to 20 μ F |
| Available Deadtime Range at 40kHz | 5% to 50% |
| Operating Junction Temperature Range: | |
| SG1526B | -55°C to 125°C |
| SG2526B | -25°C to 85°C |
| SG3526B | 0°C to 70°C |

Note 2. Range over which the device is functional.

ELECTRICAL CHARACTERISTICS

(Unless otherwise specified, these specifications apply over the operating ambient temperatures for SG1526B with $-55^\circ\text{C} \leq T_A \leq 125^\circ\text{C}$, SG2526B with $-25^\circ\text{C} \leq T_A \leq 85^\circ\text{C}$, SG3526B with $0^\circ\text{C} \leq T_A \leq 70^\circ\text{C}$, and $V_{IN} = 15\text{V}$. Low duty cycle pulse testing techniques are used which maintains junction and case temperatures equal to the ambient temperature.)

| Parameter | Test Conditions | SG1526B/2526B | | | SG3526B | | | Units |
|-------------------------------------|--------------------------|---------------|------|------|---------|------|------|-------|
| | | Min. | Typ. | Max. | Min. | Typ. | Max. | |
| Reference Section (Note 3) | | | | | | | | |
| Output Voltage | $T_J = 25^\circ\text{C}$ | 4.95 | 5.00 | 5.05 | 4.90 | 5.00 | 5.10 | V |
| Line Regulation | $V_{IN} = 8$ to 35V | | 7 | 10 | | 10 | 20 | mV |
| Load Regulation | $I_L = 0$ to 20mA | | 10 | 20 | | 10 | 25 | mV |
| Temperature Stability (Note 9) | Over Operating T_J | | 15 | 50 | | 15 | 50 | mV |
| Total Output Voltage Range (Note 9) | | 4.90 | 5.00 | 5.10 | 4.85 | 5.00 | 5.15 | V |
| Short Circuit Current | $V_{REF} = 0\text{V}$ | 25 | 50 | 125 | 25 | 50 | 125 | mA |
| Undervoltage Lockout Section | | | | | | | | |
| RESET Output Voltage | $V_{REF} = 3.8\text{V}$ | | 0.2 | 0.4 | | 0.2 | 0.4 | V |
| RESET Output Voltage | $V_{REF} = 4.8\text{V}$ | 2.4 | 4.8 | | 2.4 | 4.8 | | V |

ELECTRICAL CHARACTERISTICS (continued)

| Parameter | Test Conditions | SG1526B/2526B | | | SG3526B | | | Units |
|--|---|---------------|---------|---------|---------|---------|---------|---------------|
| | | Min. | Typ. | Max. | Min. | Typ. | Max. | |
| Oscillator Section (Note 4) | | | | | | | | |
| Initial Accuracy | $T_J = 25^\circ\text{C}$ | | ± 3 | ± 8 | | ± 3 | ± 8 | % |
| Voltage Stability | $V_{IN} = 8 \text{ to } 35\text{V}$ | | 0.5 | 1.0 | | 0.5 | 1.0 | % |
| Temperature Stability (Note 9) | Over Operating T_J | | 7 | 10 | | 3 | 5 | % |
| Minimum Frequency (Note 9) | $R_T = 150\text{k}\Omega$, $C_T = 20\mu\text{F}$ | | | 1.0 | | | 1.0 | Hz |
| Maximum Frequency | $R_T = 2\text{k}\Omega$, $C_T = 470\text{pF}$ | 500 | | | 500 | | | kHz |
| Sawtooth Peak Voltage | $V_{IN} = 35\text{V}$ | 2.5 | 3.0 | 3.5 | 2.5 | 3.0 | 3.5 | V |
| Sawtooth Valley Voltage | $V_{IN} = 8\text{V}$ | 0.5 | 1.0 | 1.1 | 0.5 | 1.0 | 1.1 | V |
| SYNC Pulse Width | $R_L = 2.0\text{k}\Omega$ to V_{REF} | | 1.0 | 2 | | 1.0 | 2 | μs |
| Error Amplifier Section (Note 5) | | | | | | | | |
| Input Offset Voltage | $R_S \leq 2\text{k}\Omega$ | | 2 | 5 | | 2 | 10 | mV |
| Input Bias Current | | | -350 | -1000 | | -350 | -2000 | nA |
| Input Offset Current | | | 35 | 100 | | 35 | 200 | nA |
| DC Open Loop Gain | $R_L \geq 10\text{M}\Omega$ | 64 | 72 | | 60 | 72 | | dB |
| High Output Voltage | $V_{PIN1} - V_{PIN2} \geq 150\text{mV}$, $I_{SOURCE} = 100\mu\text{A}$ | 3.6 | 4.2 | | 3.6 | 4.2 | | V |
| Low Output Voltage | $V_{PIN2} - V_{PIN1} \geq 150\text{mV}$, $I_{SINK} = 100\mu\text{A}$ | | 0.2 | 0.4 | | 0.2 | 0.4 | V |
| Common Mode Rejection | $R_S \leq 2\text{k}\Omega$ | 70 | 94 | | 70 | 94 | | dB |
| Supply Voltage Rejection | $V_{IN} = 8\text{V to } 35\text{V}$ | 66 | 80 | | 66 | 80 | | dB |
| PWM Comparator Section (Note 4) | | | | | | | | |
| Minimum Duty Cycle | $V_{COMPENSATION} = 0.4\text{V}$ | | | 0 | | | 0 | % |
| Maximum Duty Cycle | $V_{COMPENSATION} = 3.6\text{V}$ | 45 | 49 | | 45 | 49 | | % |
| Digital Ports (SYNC, SHUTDOWN, and RESET) | | | | | | | | |
| HIGH Output Voltage | $I_{SOURCE} = 40\mu\text{A}$ | 2.4 | 4 | | 2.4 | 4 | | V |
| LOW Output Voltage | $I_{SINK} = 3.6\text{mA}$ | | 0.2 | 0.4 | | 0.2 | 0.4 | V |
| HIGH Input Current | $V_{IH} = 2.4\text{V}$ | | -125 | -200 | | -125 | -200 | μA |
| LOW Input Current | $V_{IL} = 0.4\text{V}$ | | -225 | -360 | | -225 | -360 | μA |
| SHUTDOWN Delay to Output | (Note 9) | | | 200 | | | 200 | ns |
| Current Limit Comparator Section (Note 6) | | | | | | | | |
| Sense Voltage | $R_S \leq 50\Omega$ | 90 | 100 | 110 | 80 | 100 | 120 | mV |
| Input Bias Current | | | -3 | -10 | | -3 | -10 | μA |
| Delay to Output (Note 9) | | | | 400 | | | 400 | ns |
| Soft-Start Section | | | | | | | | |
| Error Clamp Voltage | $\overline{\text{RESET}} = 0.4\text{V}$ | | 0.1 | 0.4 | | 0.1 | 0.4 | V |
| C_S Charging Current | $\overline{\text{RESET}} = 2.4\text{V}$ | 50 | 100 | 150 | 50 | 100 | 150 | μA |
| Output Drivers (each output) (Note 7) | | | | | | | | |
| HIGH Output Voltage | $I_{SOURCE} = 20\text{mA}$ | 12.5 | 13.5 | | 12.5 | 13.5 | | V |
| | $I_{SOURCE} = 100\text{mA}$ | 12 | 13 | | 12 | 13 | | V |
| LOW Output Voltage | $I_{SINK} = 20\text{mA}$ | | 0.2 | 0.3 | | 0.2 | 0.3 | V |
| | $I_{SINK} = 100\text{mA}$ | | 1.2 | 2 | | 1.2 | 2 | V |
| Collector Leakage | $V_C = 40\text{V}$ | | 50 | 150 | | 50 | 150 | μA |
| Rise Time | $C_L = 1000\text{pF}$ | | 0.3 | 0.4 | | 0.3 | 0.4 | μs |
| Fall Time | $C_L = 1000\text{pF}$ | | 0.1 | 0.15 | | 0.1 | 0.15 | μs |
| Power Consumption Section (Note 8) | | | | | | | | |
| Standby Current | SHUTDOWN = 0.4V | | 18 | 30 | | 18 | 30 | mA |

 Note 3. $I_L = 0\text{mA}$

 Note 4. $F_{OSC} = 40\text{kHz}$ ($R_T = 4.12\text{k}\Omega \pm 1\%$, $C_T = .01\mu\text{F} \pm 1\%$, $R_D = 0\Omega$)

 Note 5. $V_{CM} = 0$ to 5.2V

 Note 6. $V_{CM} = 0$ to 12V

 Note 7. $V_C = 15\text{V}$

 Note 8. $V_{IN} = 35\text{V}$

Note 9. These parameters, although guaranteed over the recommended operating conditions, are not tested in production.

CHARACTERISTIC CURVES

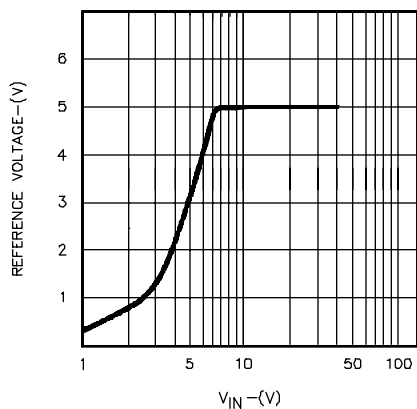


FIGURE 1.
REFERENCE VOLTAGE VS. SUPPLY VOLTAGE

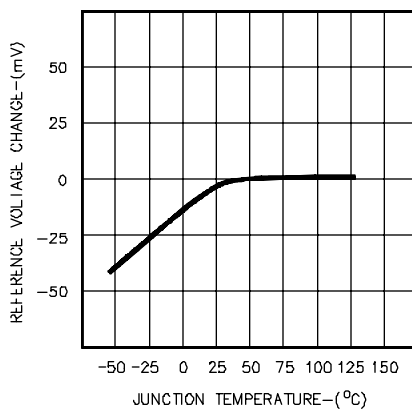


FIGURE 2.
REFERENCE TEMPERATURE STABILITY

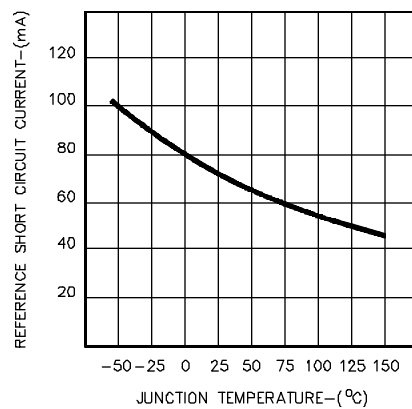


FIGURE 3.
REFERENCE SHORT CIRCUIT

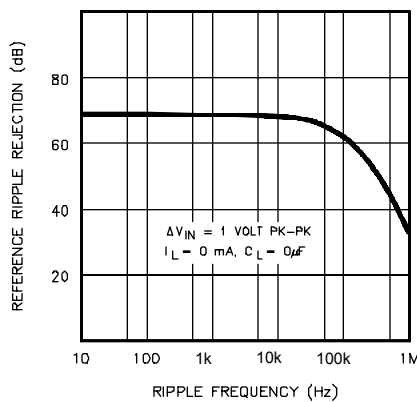


FIGURE 4.
REFERENCE RIPPLE REJECTION

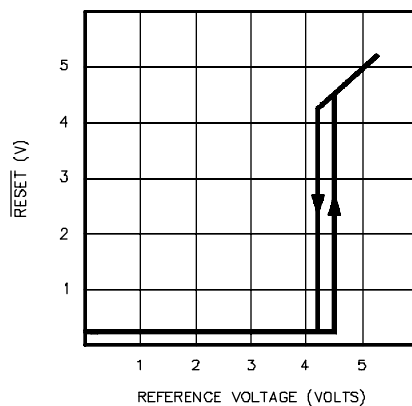


FIGURE 5.
UNDER VOLTAGE LOCKOUT

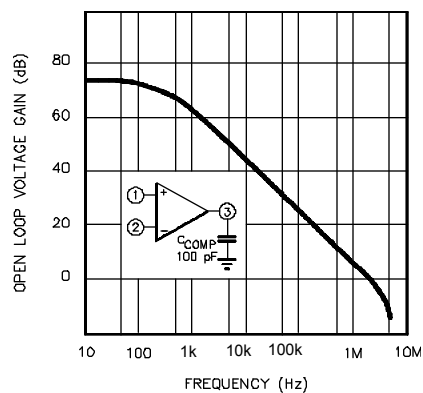


FIGURE 6.
ERROR AMPLIFIER OPEN LOOP GAIN
VS. FREQUENCY

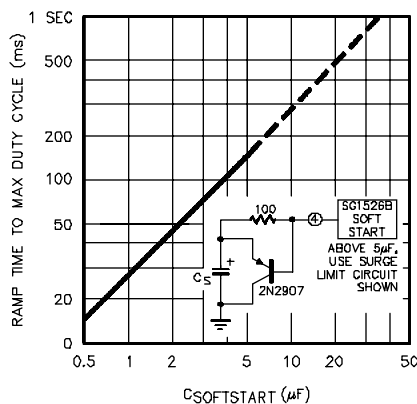


FIGURE 7.
SOFTSTART TIME CONSTANT VS. C_S

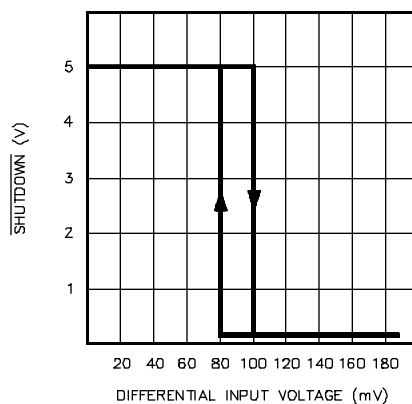


FIGURE 8.
CURRENT LIMIT TRANSFER FUNCTION

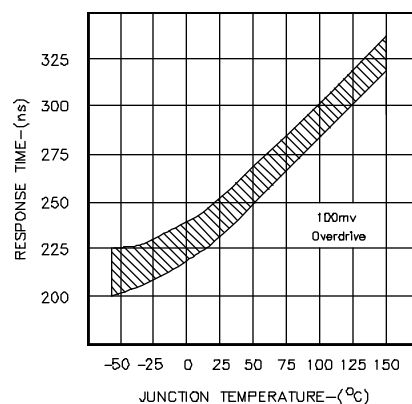


FIGURE 9.
COMPARATOR INPUT TO DRIVER OUTPUT DELAY

CHARACTERISTIC CURVES (continued)

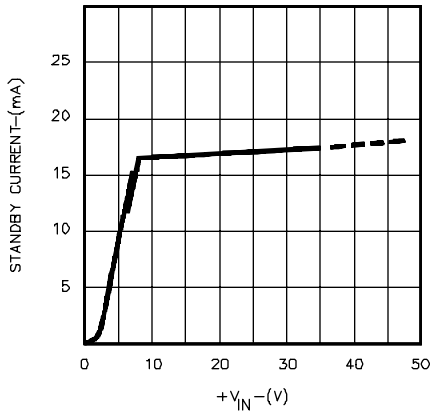


FIGURE 10.
STANDBY CURRENT VS. SUPPLY VOLTAGE

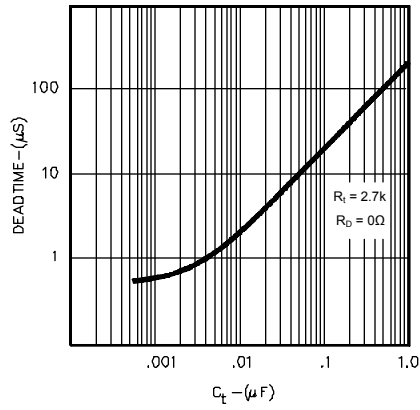


FIGURE 11.
OUTPUT DRIVER DEADTIME VS. C_T VALUE

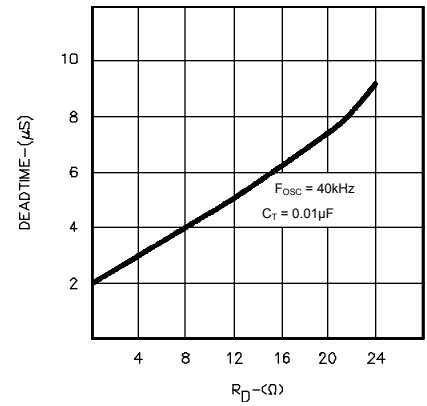


FIGURE 12.
OUTPUT DRIVER DEADTIME VS. R_D VALUE

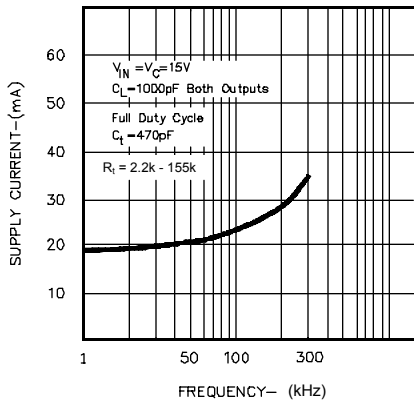


FIGURE 13.
SUPPLY CURRENT VS. OUTPUT FREQUENCY

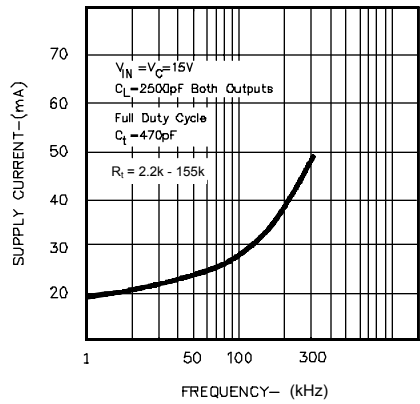


FIGURE 14.
SUPPLY CURRENT VS. OUTPUT FREQUENCY

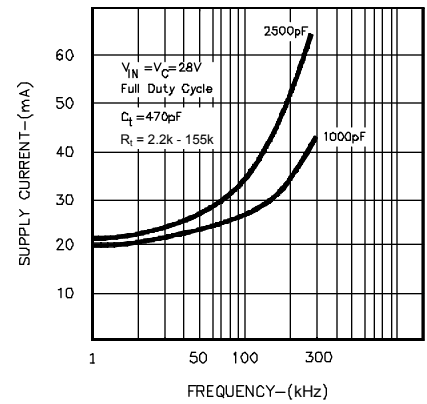


FIGURE 15.
SUPPLY CURRENT VS. OUTPUT FREQUENCY

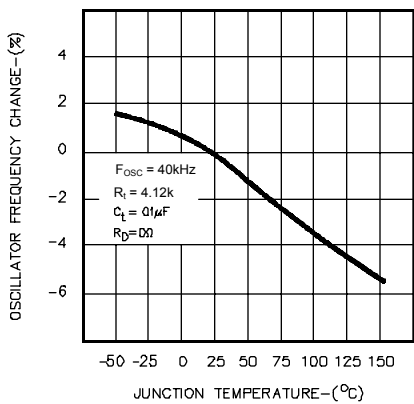


FIGURE 16.
OSCILLATOR FREQUENCY
TEMPERATURE STABILITY

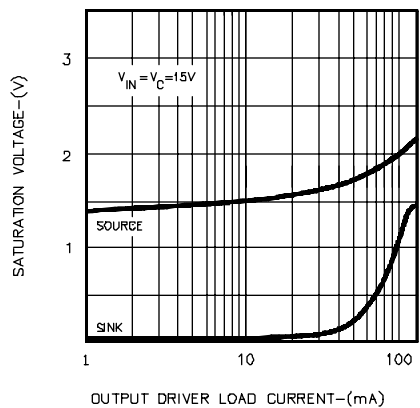


FIGURE 17.
OUTPUT DRIVER SATURATION VOLTAGE

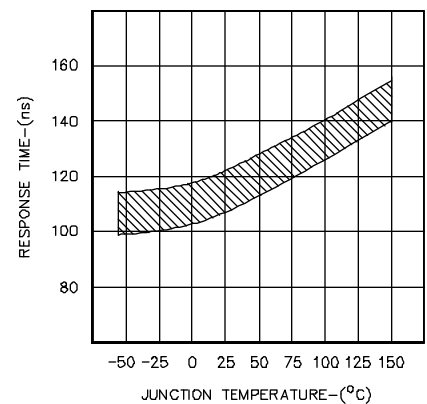


FIGURE 18.
SHUTDOWN INPUT TO DRIVER OUTPUT DELAY

CHARACTERISTIC CURVES (continued)

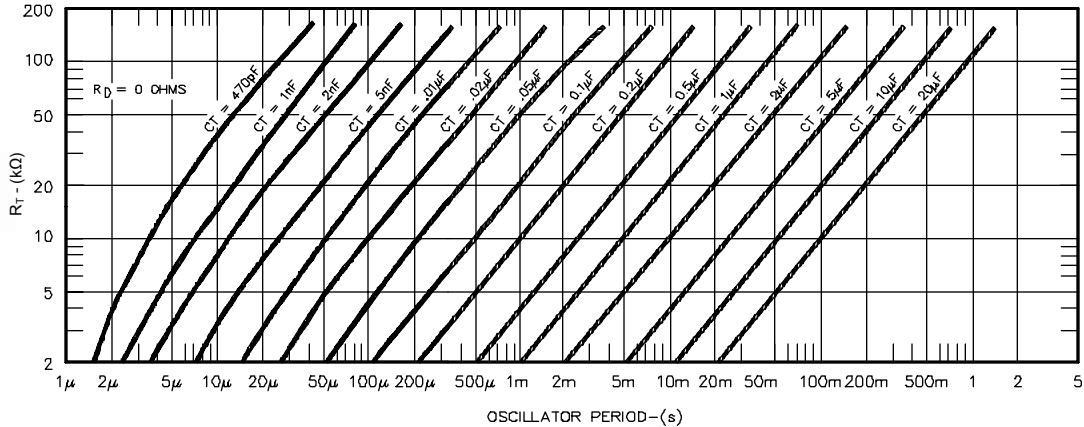


FIGURE 19.
OSCILLATOR PERIOD VS. R_T AND C_T

APPLICATION INFORMATION

VOLTAGE REFERENCE

The reference regulator of the SG1526B is a “band-gap” type; that is, the precision +5 volt output is derived from the very predictable base-emitter voltage of an NPN transistor. Since this is a sub-surface phenomenon, the resulting output exhibits excellent stability compared to earlier surface-breakdown Zener designs.

The reference output is stabilized at input voltages as low as +8 volts, and can provide up to 20mA of load current to external circuitry. An external PNP transistor can be used to boost the available current to many hundreds of mA. A rugged low-frequency audio-type transistor should be used, and lead lengths between the PWM and transistor should be as short as possible to minimize the risk of oscillation.

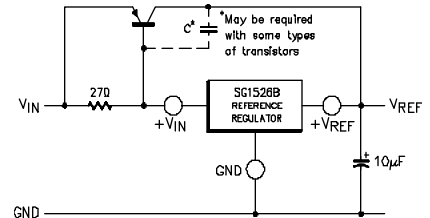


FIGURE 20.
EXTENDING REFERENCE OUTPUT CURRENT

UNDERVOLTAGE LOCKOUT

The undervoltage lockout circuit protects the SG1526B and the power devices it controls from inadequate supply voltage. If $+V_{IN}$ is too low, the circuit disables the output drivers and holds the RESET pin LOW. This prevents spurious output pulses while the control circuitry is stabilizing, and holds the soft-start timing capacitor in a discharged state.

The circuit consists of a merged bandgap reference and comparator circuit which is active when the reference voltage has risen to $2V_{BE}$ or 1.2 volts at 25°C. When the reference voltage rises to approximately +4.4 volts, the circuit enables the output drivers and releases the RESET pin, allowing a normal softstart. The comparator has 200mV of hysteresis to minimize oscillation at the trip point. When $+V_{IN}$ to the PWM is removed and the reference drops to +4.2 volts, the undervoltage circuit pulls RESET LOW again. The soft-start capacitor is immediately discharged, and the PWM is ready for another soft-start cycle.

The SG1526B can operate from a +5 volt supply regulated to within $\pm 4\%$ by connecting the V_{REF} pin to the $+V_{IN}$ pin.

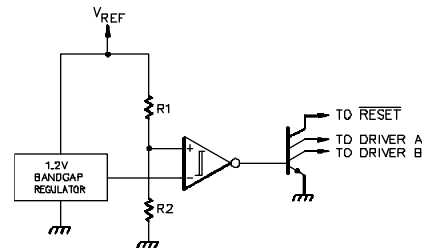


FIGURE 21.
SIMPLIFIED UNDERVOLTAGE LOCKOUT

SOFT-START CIRCUIT

The soft-start circuit protects the power transistors and rectifier diodes from high current surges during power supply turn-on. When supply voltage is first applied to the SG1526B, the undervoltage lockout circuit holds RESET LOW with Q3. Q1 is turned on, which holds the soft-start capacitor voltage at zero. The second collector of Q1 clamps the output of the error amplifier to ground, guaranteeing zero duty cycle at the driver outputs. When the supply voltage reaches normal operating range, RESET will go HIGH. Q1 turns off, allowing the internal 100 μ A current source to charge C_S . Q2 clamps the error amplifier output to $1.0 V_{BE}$ above the voltage on C_S . As the soft-start voltage ramps up to +5 volts, the duty cycle of the PWM linearly increases to whatever value the voltage regulation loop requires for an error null. Figure 7 gives the timing relationship between C_S ramp time to 100% duty cycle.

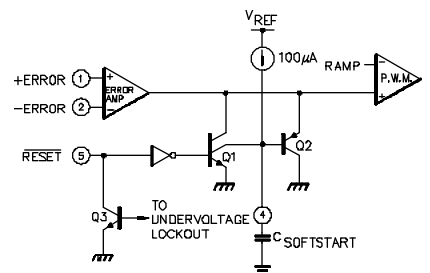


FIGURE 22.
SOFT-START CIRCUIT SCHEMATIC

APPLICATION INFORMATION (continued)

DIGITAL CONTROL PORTS

The three digital control ports of the SG1526B are bi-directional. Each pin can drive TTL and 5 volt CMOS logic directly, up to a fan-out of 10 low-power Schottky gates. Each pin can also be directly driven by open-collector TTL, open-drain CMOS, and open-collector voltage comparators, fan-in is equivalent to 1 low-power Schottky gate. Each port is normally HIGH; the pin is pulled LOW to activate the particular function. Driving $\overline{\text{SYNC}}$ LOW initiates a discharge cycle in the oscillator. Pulling $\overline{\text{SHUTDOWN}}$ LOW immediately inhibits all PWM output pulses. Holding $\overline{\text{RESET}}$ LOW discharges the soft-start capacitor. The logic threshold is +1.1 volts at +25°C. Noise immunity can be gained at the expense of fan-out with an external 2k pull-up resistor to +5V.

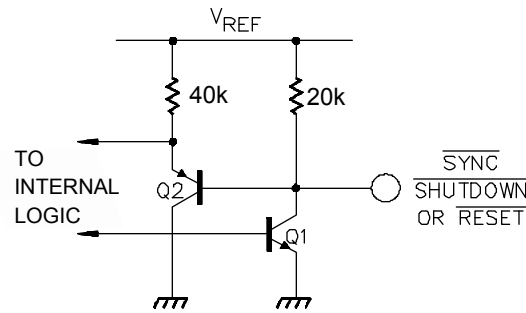


FIGURE 23
DIGITAL CONTROL PORT SCHEMATIC

OSCILLATOR

The oscillator is programmed for frequency and dead time with three components: R_T , C_T , and R_D . Two waveforms are generated: a sawtooth waveform at pin 10 for pulse width modulation, and a logic clock at pin 12. The following procedure is recommended for choosing timing values:

1. With $R_D = 0\Omega$ (pin 11 shorted to ground) select values for R_T and C_T from Figure 19 to give the desired oscillator period. Remember that the frequency at each driver output is half the oscillator frequency, and the frequency at the $+V_C$ terminal is the same as the oscillator frequency.
2. If more dead time is required, select a larger value of R_D using Figure 12 as a guide. At 40 kHz dead time increases by 300 ns/ Ω .
3. Increasing the dead time will cause the oscillator frequency to decrease slightly. Go back and decrease the value of R_T slightly to bring the frequency back to the nominal design value.

The SG1526B can be synchronized to an external logic clock by programming the oscillator to free-run at a frequency 10% slower than the sync frequency. A periodic LOW logic pulse approximately 0.5 μSec wide at the $\overline{\text{SYNC}}$ pin will then lock the oscillator to the external frequency.

Multiple devices can be synchronized together by programming one master unit for the desired frequency, and then sharing its sawtooth and clock waveforms with the slave units. All C_T terminals are connected to the C_T pin of the master, and all $\overline{\text{SYNC}}$ terminals are likewise connected to the $\overline{\text{SYNC}}$ pin of the master. Slave R_T terminals should not be left open; at least 50k should be connected from each pin to ground. Slave R_D terminals may be either left open or grounded.

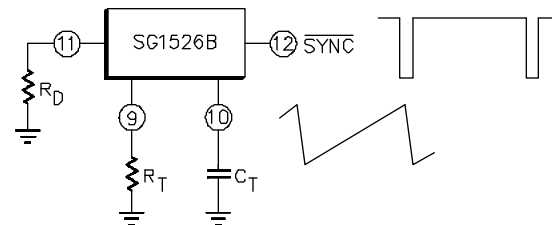


FIGURE 24.
OSCILLATOR CONNECTIONS AND WAVEFORMS

ERROR AMPLIFIER

The error amplifier is a transconductance design, with an output impedance of 2 megohms. Since all voltage gain takes place at the output pin, the open-loop gain/frequency characteristics can be controlled with shunt reactance to ground. When compensated for unity-gain stability with 100 pF, the amplifier has an open-loop pole at 400 Hz.

The input connections to the error amplifier and determined by the polarity of the switching supply output voltage. For positive supplies, the common-mode voltage is +5.0 volts and the feedback connections in Figure 25A are used. With negative supplies, the common-mode voltage is ground and the feedback divider is connected between the negative output and the +5.0 volt reference voltage, as shown in Figure 25B.

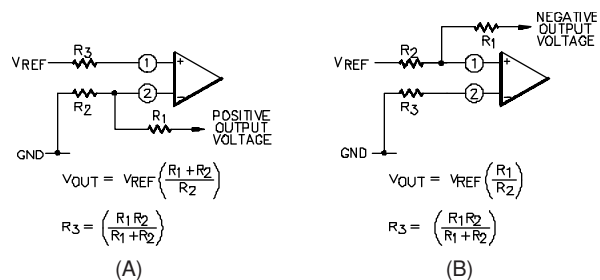


FIGURE 25.
ERROR AMPLIFIER CONNECTIONS

APPLICATION INFORMATION (continued)

OUTPUT DRIVERS

The totem-pole output drivers of the SG1526B are designed to source and sink 100mA continuously and 200mA peak. Loads can be driven either from the output pins 13 and 16,

or from the +V_C pin, as required. Curves for the saturation voltage at these outputs as a function of load current are found in Figure 17.

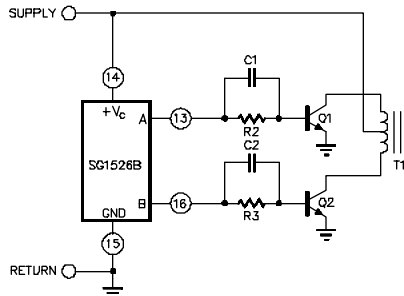


FIGURE 26. PUSH-PULL CONFIGURATION

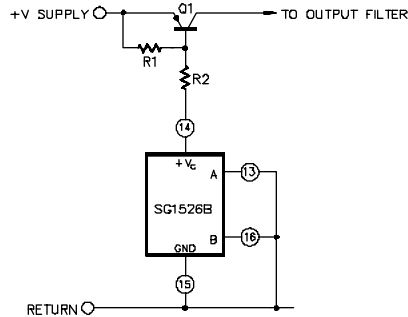


FIGURE 27. SINGLE-ENDED CONFIGURATION

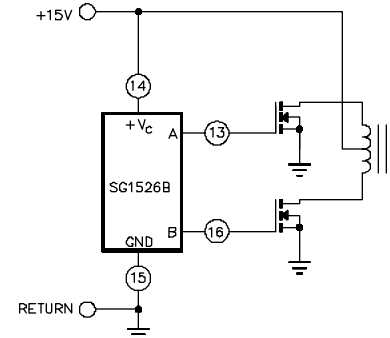
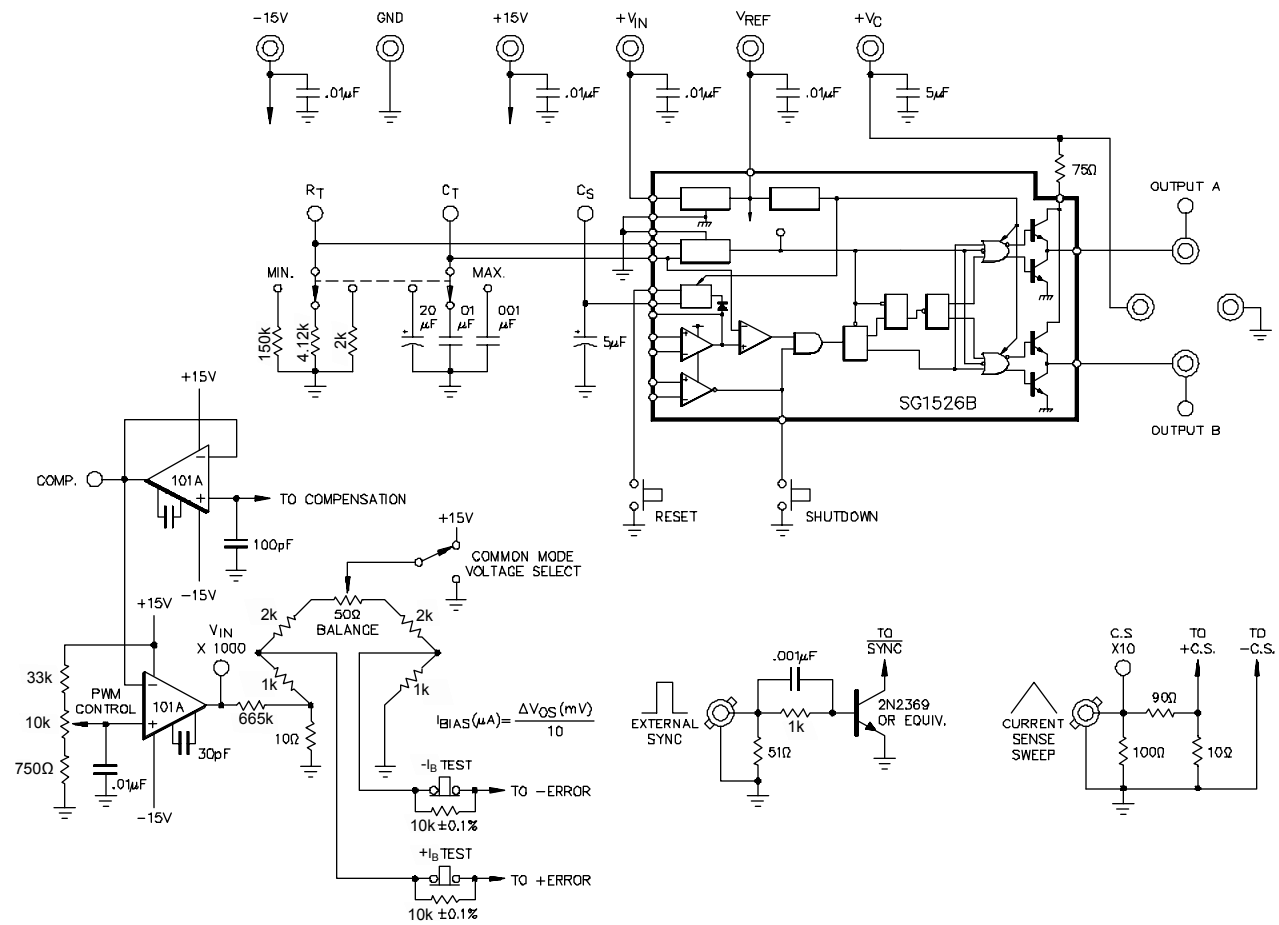
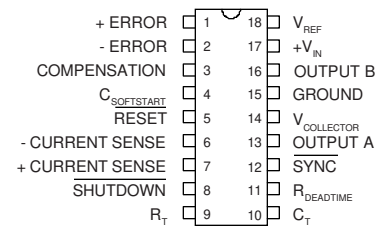
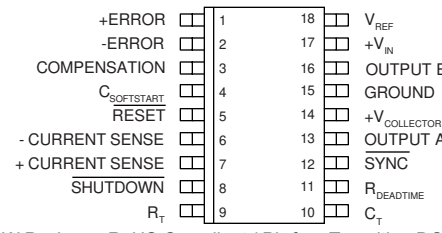
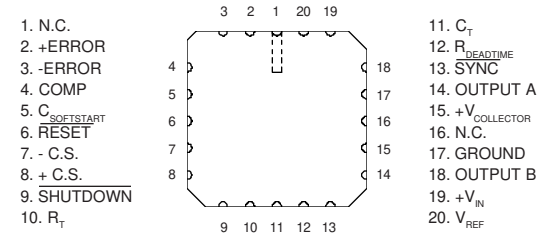


FIGURE 28. DRIVING N-CHANNEL POWER MOSFETS

SG1526B LAB TEST FIXTURE



CONNECTION DIAGRAMS & ORDERING INFORMATION (See Notes Below)

| Package | Part No. | Ambient Temperature Range | Connection Diagram |
|---|--|--|--|
| 18-PIN CERAMIC DIP J - PACKAGE | SG1526BJ-883B SG1526BJ-JAN SG1526BJ-DESC SG1526BJ SG2526BJ SG3526BJ | -55°C to 125°C -55°C to 125°C -55°C to 125°C -55°C to 125°C -25°C to 85°C 0°C to 70°C |  <p>N Package: RoHS Compliant / Pb-free Transition DC: 0503 N Package: RoHS / Pb-free 100% Matte Tin Lead Finish</p> |
| 18-PIN PLASTIC DIP N - PACKAGE | SG2526BN SG3526BN | -25°C to 85°C 0°C to 70°C | |
| 18-PIN WIDE BODY PLASTIC SOIC DW - PACKAGE | SG2526BDW SG3526BDW | -25°C to 85°C 0°C to 70°C |  <p>DW Package: RoHS Compliant / Pb-free Transition DC: 0516 DW Package: RoHS / Pb-free 100% Matte Tin Lead Finish</p> |
| 20-PIN CERAMIC LEADLESS CHIP CARRIER L- PACKAGE | SG1526BL-883B SG1526BL | -55°C to 125°C -55°C to 125°C |  |

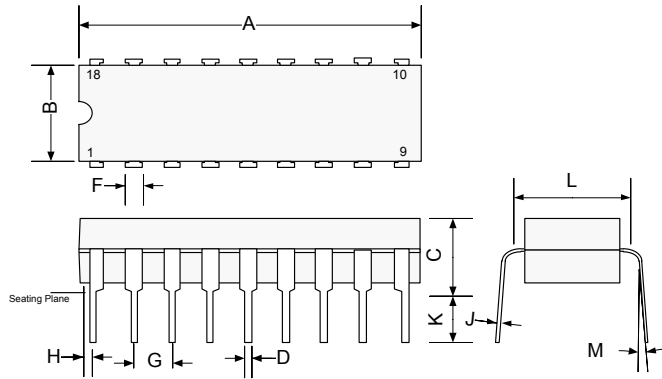
Note 1. Contact factory for JAN and DESC product availability.

Note 2. All parts are viewed from the top.

Note 3. Hermetic Packages J and L use Pb37/SN63 hot solder lead finish, contact factory for availability of RoHS versions.

PACKAGE OUTLINE DIMENSIONS

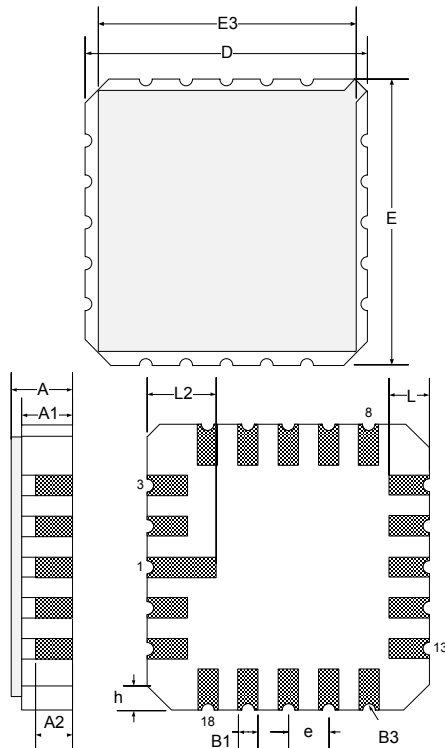
Controlling dimensions are in inches, metric equivalents are shown for general information.



| DIM | MILLIMETERS | | INCHES | |
|-----|-------------|-------|-----------|-------|
| | MIN | MAX | MIN | MAX |
| A | - | 24.38 | - | 0.960 |
| B | 5.59 | 7.11 | 0.220 | 0.280 |
| C | - | 5.08 | - | 0.200 |
| D | 0.38 | 0.51 | 0.015 | 0.020 |
| F | 1.02 | 1.77 | 0.040 | 0.070 |
| G | 2.54 BSC | | 0.100 BSC | |
| H | - | 2.03 | - | 0.080 |
| J | 0.20 | 0.38 | 0.008 | 0.015 |
| K | 3.18 | 5.08 | 0.125 | 0.200 |
| L | 7.37 | 7.87 | 0.290 | 0.310 |
| M | - | 15° | - | 15° |

Note: Dimensions do not include protrusions; these shall not exceed 0.155mm (0.006") on any side. Lead dimension shall not include solder coverage.

Figure 29 · J 18-Pin CERDIP Package Dimensions

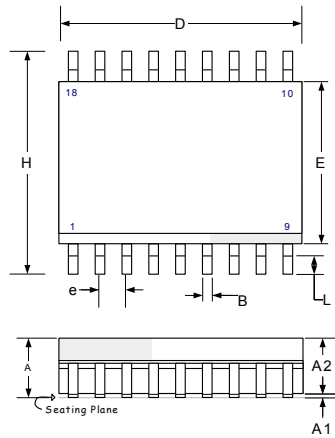


| Dim | MILLIMETERS | | INCHES | |
|-----|-------------|-------|-----------|-------|
| | MIN | MAX | MIN | MAX |
| D/E | 8.64 | 9.14 | 0.340 | 0.360 |
| E3 | - | 8.128 | - | 0.320 |
| e | 1.270 BSC | | 0.050 BSC | |
| B1 | 0.635 TYP | | 0.025 TYP | |
| L | 1.02 | 1.52 | 0.040 | 0.060 |
| A | 1.626 | 2.286 | 0.064 | 0.090 |
| h | 1.016 TYP | | 0.040 TYP | |
| A1 | 1.372 | 1.68 | 0.054 | 0.066 |
| A2 | - | 1.168 | - | 0.046 |
| L2 | 1.91 | 2.41 | 0.075 | 0.95 |
| B3 | 0.203R | | 0.008R | |

Note: All exposed metalized area shall be gold plated 60 μ-inch minimum thickness over nickel plated unless otherwise specified in purchase order.

Figure 30 · L 20-Pin Ceramic LCC Package Dimensions

PACKAGE OUTLINE DIMENSIONS (continued)

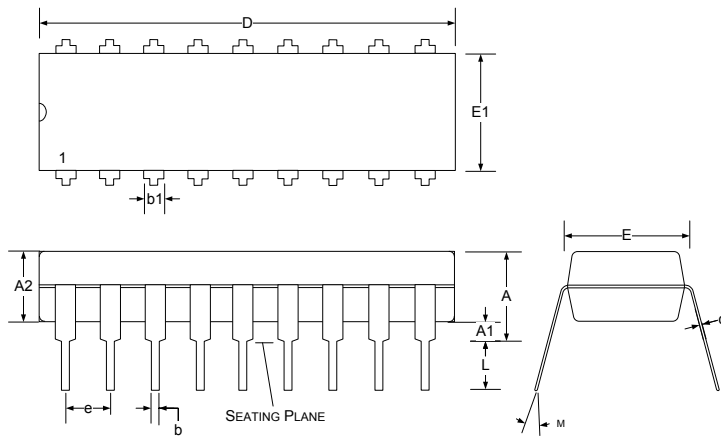


| DIM | MILLIMETERS | | INCHES | |
|-----|-------------|-------|----------|-------|
| | MIN | MAX | MIN | MAX |
| A | 2.35 | 2.65 | 0.093 | 0.104 |
| A1 | 0.10 | 0.30 | 0.004 | 0.012 |
| A2 | 2.20 | 2.55 | 0.086 | 0.100 |
| B | 0.33 | 0.51 | 0.013 | 0.020 |
| c | 0.23 | 0.32 | 0.009 | 0.013 |
| D | 11.40 | 11.70 | 0.449 | 0.461 |
| E | 7.40 | 7.60 | 0.291 | 0.299 |
| e | 1.27 BSC | | 0.05 BSC | |
| H | 10.00 | 10.65 | 0.394 | 0.419 |
| L | 0.40 | 1.27 | 0.016 | 0.050 |
| θ | 0° | 8° | 0° | 8° |
| *LC | - | 0.10 | - | 0.004 |

* Lead Coplanarity

Note: Dimensions do not include mold flash or protrusions; these shall not exceed 0.155mm (0.006") on any side. Lead dimension shall not include solder coverage.

Figure 31 · DW 18-Pin Plastic Wide-body SOIC (SOWB) Package Dimensions



| Dim | MILLIMETERS | | INCHES | |
|-----|-------------|-------|-----------|-------|
| | MIN | MAX | MIN | MAX |
| A | | 5.33 | | 0.210 |
| A1 | 0.38 | | 0.015 | |
| A2 | 3.30 Typ | | 0.130 Typ | |
| b | 0.36 | 0.56 | 0.014 | 0.022 |
| b1 | 1.14 | 1.78 | 0.045 | 0.070 |
| c | 0.20 | 0.36 | 0.008 | 0.014 |
| D | 22.35 | 23.34 | 0.880 | 0.920 |
| e | 2.54 BSC | | 0.100 BSC | |
| E | 7.62 | 8.26 | 0.300 | 0.325 |
| E1 | 6.10 | 7.11 | 0.240 | 0.280 |
| L | 2.92 | 3.81 | 0.115 | 0.150 |
| M | - | 15° | - | 15° |

Note: Dimensions do not include mold flash or protrusions; these shall not exceed 0.155mm (0.006") on any side. Lead dimension shall not include solder coverage.

Figure 32 · N 18-Pin Plastic Dual In-line Package Dimensions



Microsemi

Microsemi Corporate Headquarters
One Enterprise, Aliso Viejo CA 92656 USA
Within the USA: +1 (800) 713-4113
Outside the USA: +1 (949) 380-6100
Sales: +1 (949) 380-6136
Fax: +1 (949) 215-4996
E-mail: sales.support@microsemi.com

Microsemi Corporation (Nasdaq: MSCC) offers a comprehensive portfolio of semiconductor and system solutions for communications, defense and security, aerospace, and industrial markets. Products include high-performance and radiation-hardened analog mixed-signal integrated circuits, FPGAs, SoCs, and ASICs; power management products; timing and synchronization devices and precise time solutions, setting the world's standard for time; voice processing devices; RF solutions; discrete components; security technologies and scalable anti-tamper products; Power-over-Ethernet ICs and midspans; as well as custom design capabilities and services. Microsemi is headquartered in Aliso Viejo, Calif. and has approximately 3,400 employees globally. Learn more at www.microsemi.com.

© 2014 Microsemi Corporation. All rights reserved. Microsemi and the Microsemi logo are trademarks of Microsemi Corporation. All other trademarks and service marks are the property of their respective owners.