



Chipsmall Limited consists of a professional team with an average of over 10 year of expertise in the distribution of electronic components. Based in Hongkong, we have already established firm and mutual-benefit business relationships with customers from,Europe,America and south Asia,supplying obsolete and hard-to-find components to meet their specific needs.

With the principle of “Quality Parts,Customers Priority,Honest Operation,and Considerate Service”,our business mainly focus on the distribution of electronic components. Line cards we deal with include Microchip,ALPS,ROHM,Xilinx,Pulse,ON,Everlight and Freescale. Main products comprise IC,Modules,Potentiometer,IC Socket,Relay,Connector.Our parts cover such applications as commercial,industrial, and automotives areas.

We are looking forward to setting up business relationship with you and hope to provide you with the best service and solution. Let us make a better world for our industry!



Contact us

Tel: +86-755-8981 8866 Fax: +86-755-8427 6832

Email & Skype: info@chipsmall.com Web: www.chipsmall.com

Address: A1208, Overseas Decoration Building, #122 Zhenhua RD., Futian, Shenzhen, China





SG923-0004 Kraken Eval Board

Overview

SG923-0004 Kraken Eval Board provides an easy way for customers to evaluate and develop applications with Kraken Wi-Fi modules. The eval board provides power to the module and brings communications interfaces to standard connectors.

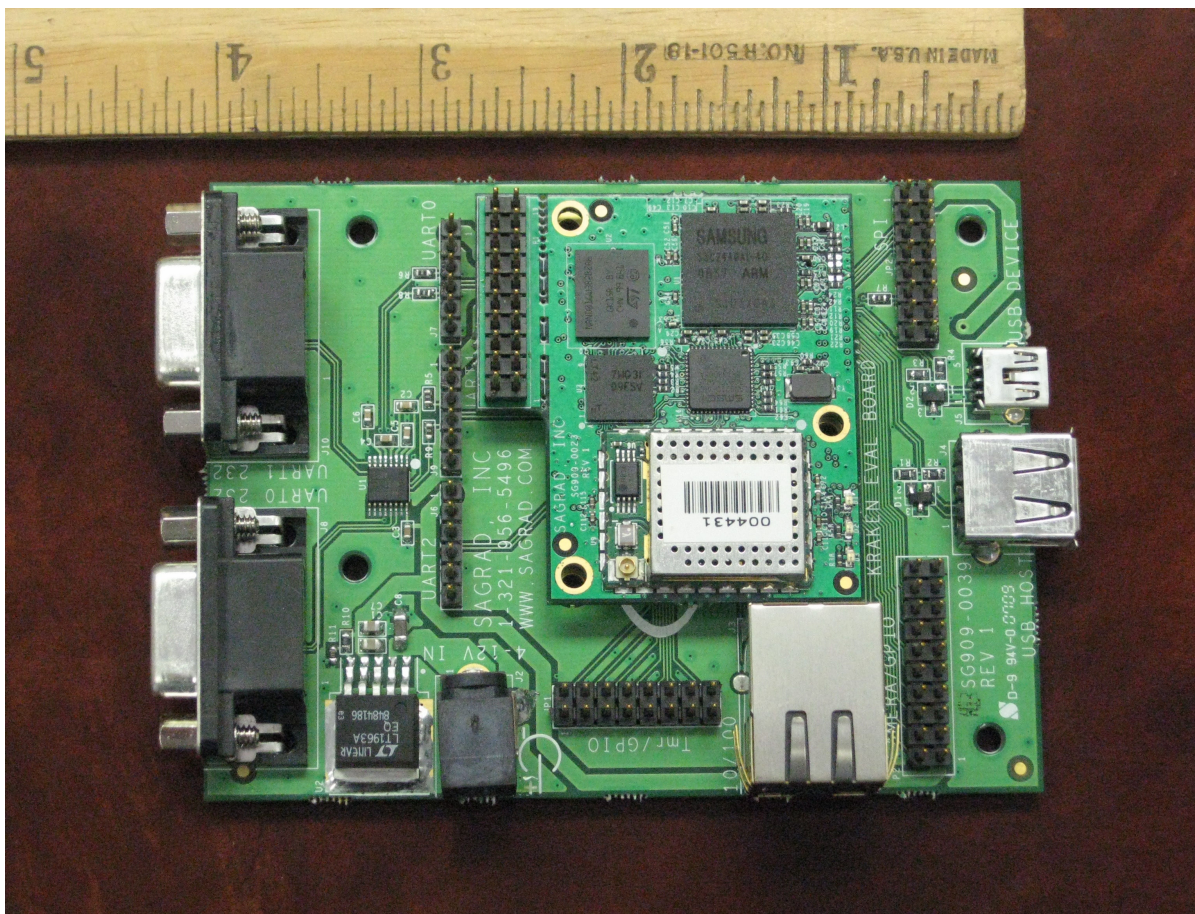
Most signals can also be used as general-purpose IO, and are available at standard 0.1" pitch headers.

Features

- Variety of Standard Communications Interfaces
 - 10/100Base-T (RJ45)
 - 3 UART ports (2 DB9)
 - 2 USB ports – Type A host, Mini-B Device
 - 1 SPI port (Header)
- GPIO and Peripherals
 - I2S Digital Audio interface (Header)
 - 8-bit camera interface (Header)
 - Timer I/O (Header)
- On board regulator accepts 4-12V (5V optimal)

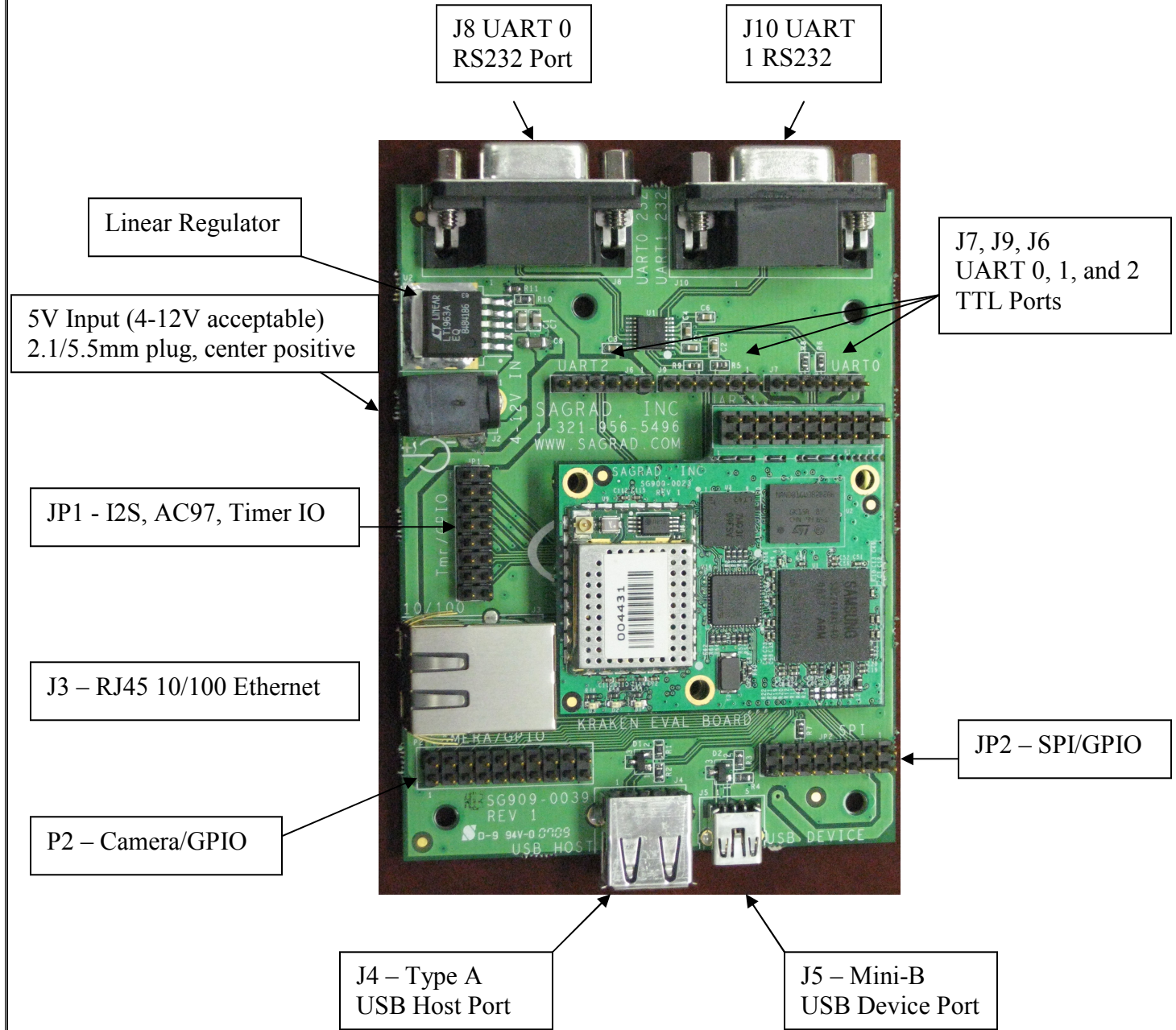
Ordering Information

Packaging	Order Number
Eval Kit	SG923-0004





Eval Board Components





Connector Pinouts and Descriptions

UART Connectors

SIGNAL NAME	PIN NUMBER	DESCRIPTION	NOTES
UART 0 DB9 (J8)			
RXD0_232	2	UART0 Receive Data (input)	RS232 Level
TXD0_232	3	UART0 Transmit Data (output)	RS232 Level
GND	5	Signal Ground	
UART 0 Header (J7) (Remove resistor R8 to use J7)			
3.3V	1	Power to RS232 driver	
GND	2	Signal/Power Ground	
RXD0	3	UART0 Receive Data (input)	3.3V CMOS level – Also GPIO
TXD0	4	UART0 Transmit Data (output)	3.3V CMOS level – Also GPIO
-	5	Handshaking loopback to 6	
-	6	Handshaking loopback to 5	
UART 1 DB9 (J10)			
RXD1_232	2	UART1 Receive Data (input)	RS232 Level
TXD1_232	3	UART1 Transmit Data (output)	RS232 Level
GND	5	Signal Ground	
UART 1 Header (J9) (Remove resistor R9 to use J9)			
3.3V	1	Power to RS232 driver	
GND	2	Signal/Power Ground	
RXD1	3	UART1 Receive Data (input)	3.3V CMOS level – Also GPIO
TXD1	4	UART1 Transmit Data (output)	3.3V CMOS level – Also GPIO
-	5	Handshaking loopback to 6	
-	6	Handshaking loopback to 5	
UART 2 Header (J6)			
3.3V	1	Power to RS232 driver	
GND	2	Signal/Power Ground	
RXD2	3	UART2 Receive Data (input)	3.3V CMOS level – Also GPIO
TXD2	4	UART2 Transmit Data (output)	3.3V CMOS level – Also GPIO
-	5	Handshaking loopback to 6	
-	6	Handshaking loopback to 5	



Connector Pinouts and Descriptions

P2 Camera/GPIO Connector

SIGNAL NAME	PIN NUMBER	DESCRIPTION	NOTES
3.3V	1	3.3V Power	
CAMCLKOUT	2	Camera master clock output	GPIO GPJ11
GND	3	Ground	
CAMRESET	4	Camera reset output	GPIO GPJ12
CAMPCLK	5	Camera pixel clock input	GPIO GPJ8
CAMD0	6	Camera data bit 0	GPIO GPJ0
GND	7	Ground	
CAMD1	8	Camera data bit 1	GPIO GPJ1
CAMVSYNC	9	Camera vertical sync input	GPIO GPJ9
CAMD2	10	Camera data bit 2	GPIO GPJ2
GND	11	Ground	
CAMD3	12	Camera data bit 3	GPIO GPJ3
CAMHREF	13	Camera horizontal sync input	GPIO GPJ10
CAMD4	14	Camera data bit 4	GPIO GPJ4
GND	15	Ground	
CAMD5	16	Camera data bit 5	GPIO GPJ5
GND	17	Ground	
CAMD6	18	Camera data bit 6	GPIO GPJ6
GND	19	Ground	
CAMD7	20	Camera data bit 7	GPIO GPJ7

JP2 SPI/GPIO Connector

SIGNAL NAME	PIN NUMBER	DESCRIPTION	NOTES
-	1	-	
3.3V	2	3.3V Power	
SPICLK1	3	SPI Clock	GPIO GPG7
SPIMOSI1	4	SPI Master Output Slave Input	GPIO GPG6
SPIMISO1	5	SPI Master Input Slave Output	GPIO GPG5
SS1	6	SPI Slave Select	GPIO GPG3
GND	7	Ground	
-	8	-	
GND	9	Ground	
-	10	-	
TCLK0	11	SPI Interrupt	TCLK0 timer clk – GPIO GPB4
-	12	-	
GND	13	Ground	
-	14	-	
GND	15	Ground	
GND	16	Ground	



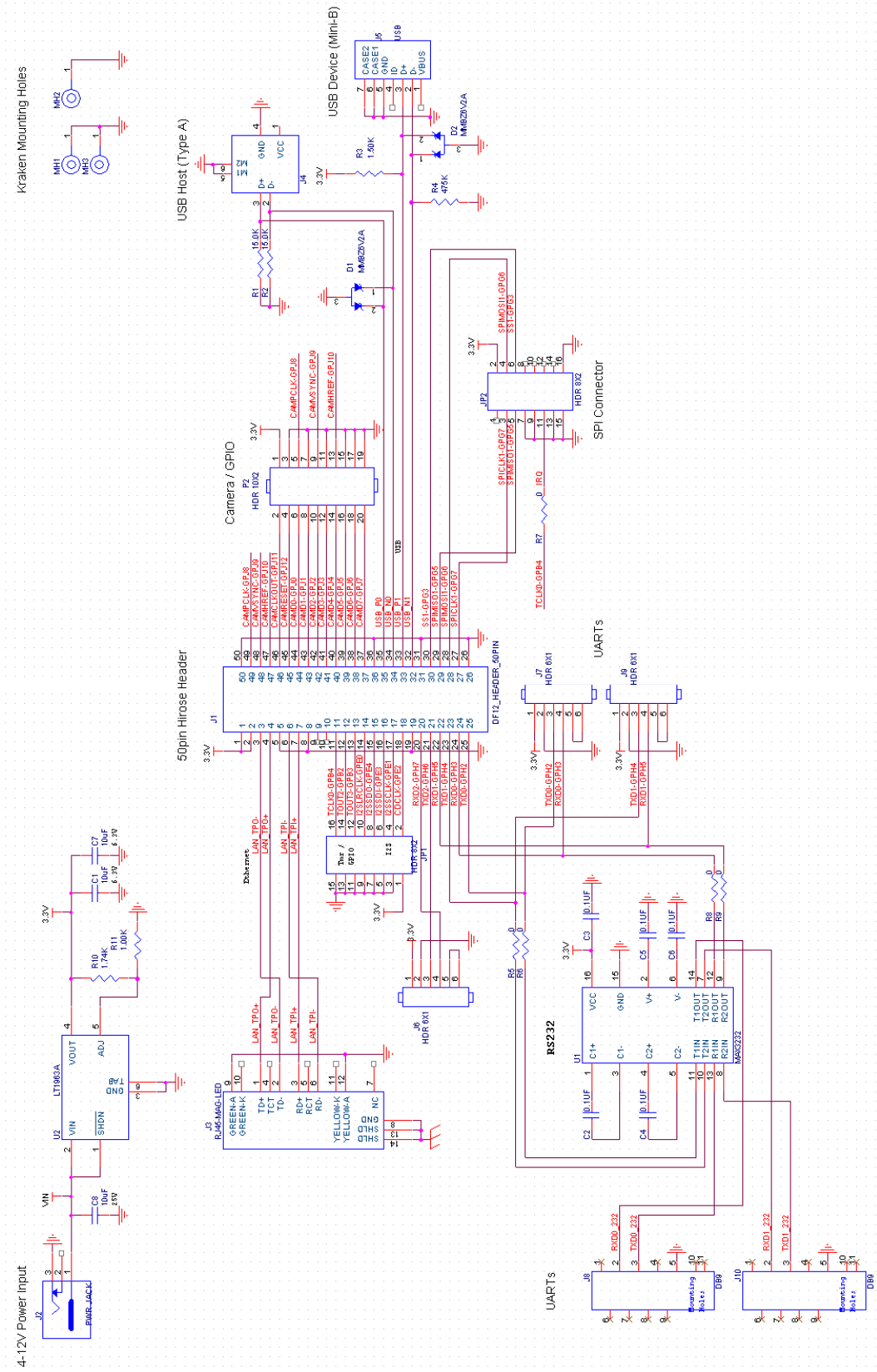
Connector Pinouts and Descriptions

JP1 I2S, AC97, Timer, GPIO

SIGNAL NAME	PIN NUMBER	DESCRIPTION	NOTES
3.3V	1	3.3V Power	
CDCLK	2	I2S master clock output, AC97 RST	GPIO GPE2
GND	3	Ground	
I2S_SCLK	4	I2S/AC97 serial clock input/output	GPIO GPE1
GND	5	Ground	
I2S_SDI	6	I2S/AC97 serial data input	GPIO GPE3
GND	7	Ground	
I2S_SDO	8	I2S/AC97 serial data output	GPIO GPE4
GND	9	Ground	
I2S_LRCK	10	I2S frame output, AC97 SYNC,	GPIO GPE0
GND	11	Ground	
TOUT3	12	Timer 3 output	GPIO GPB3
GND	13	Ground	
TOUT2	14	Timer 2 output	GPIO GPB2
GND	15	Ground	
TCLK0	16	Timer 0 clock input	GPIO GPB4



Schematic



Kraken Mounting Holes

4-12V Power Input