



Chipsmall Limited consists of a professional team with an average of over 10 year of expertise in the distribution of electronic components. Based in Hongkong, we have already established firm and mutual-benefit business relationships with customers from,Europe,America and south Asia,supplying obsolete and hard-to-find components to meet their specific needs.

With the principle of "Quality Parts,Customers Priority,Honest Operation,and Considerate Service",our business mainly focus on the distribution of electronic components. Line cards we deal with include Microchip,ALPS,ROHM,Xilinx,Pulse,ON,Everlight and Freescale. Main products comprise IC,Modules,Potentiometer,IC Socket,Relay,Connector.Our parts cover such applications as commercial,industrial, and automotives areas.

We are looking forward to setting up business relationship with you and hope to provide you with the best service and solution. Let us make a better world for our industry!



Contact us

Tel: +86-755-8981 8866 Fax: +86-755-8427 6832

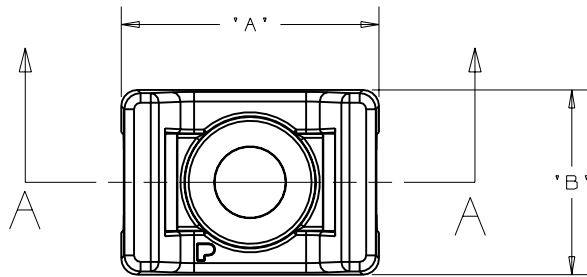
Email & Skype: info@chipsmall.com Web: www.chipsmall.com

Address: A1208, Overseas Decoration Building, #122 Zhenhua RD., Futian, Shenzhen, China



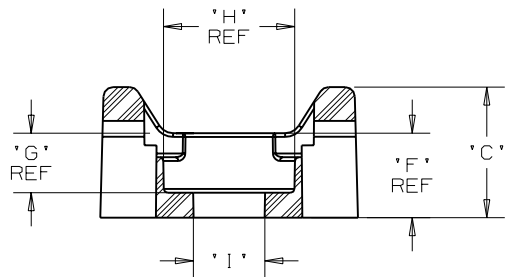
THIS COPY IS PROVIDED ON A RESTRICTED BASIS AND IS NOT TO BE USED IN ANY WAY DETRIMENTAL TO THE INTERESTS OF PANDUIT CORP.

PANDUIT PART NO.	RECOMMENDED FASTENER	'A'	'B'	'C'	'D'	'E'	'F'	'G'	'H'	'I'	WEIGHT		PRODUCT COMPATIBLE WITH CABLE TIE CROSS-SECTION(S)	
											lbs/100 pcs	g/100 pcs		
SGTM2S8- TMSG2S8- _	#8 (M4) SCREW	0.66 (16.7)	0.48 (12.2)	0.34 (8.6)	0.25 (6.3)	0.09 (2.3)	0.22 (5.6)	0.15 (3.8)	0.333 (8.7)	0.18 (4.6)		0.180 (81.6)		S, I, M SG100M, SG150I, SG200S, SG250S, SG300S, SG370S

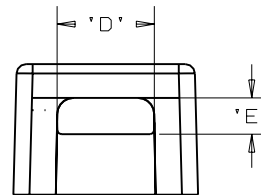


NOTES:

- SEE CURRENT PRICE SHEET FOR PART NUMBER SUFFIX DESIGNATION FOR PACKAGE SIZE.



SECTION A - A



DIMENSIONS IN BRACKETS ARE METRIC [mm]

CAD FILENAME/LAYERS

G02789BE_PB_SGTM2S8_02

PANDUIT

CORP.

TINLEY PARK, ILLINOIS

TIE MOUNT - (SUPER GRIP TIES)
SGTM2S8-
& TMSG2S8-
_

UNLESS OTHERWISE SPECIFIED,
DIMENSIONAL TOLERANCES ARE:

(.X) ±0.05 (1.3) (.XXX) ±0.010 (0.25)
(.XX) ±0.02 (0.5) ANGLES ± 5°

UNLESS OTHERWISE SPECIFIED,
ALL DIMENSIONS ARE GIVEN
IN INCHES, THIRD ANGLE
PROJECTION.

DRAWN BY

TMSA

MAT'L:

NYLON 6/6

SCALE

NONE

DATE

03-22-05

DRAWING NO.

GB2987BE

DWG

A
SIZE

REV	DATE	BY	CHK	DESCRIPTION	ECN	R	CUST	SUP
2	3/9/06	JAD		UPDATE CABLE TIE CALLOUTS IN TABLE	GB2987BE	2		
1	8-24-05	TMSA		ADDED PART NUMBER SGTM2S8- _	GB2987BE	1		
R	03-22-05	TMSA		INITIAL RELEASE	GB2987BE	R		