



Chipsmall Limited consists of a professional team with an average of over 10 year of expertise in the distribution of electronic components. Based in Hongkong, we have already established firm and mutual-benefit business relationships with customers from,Europe,America and south Asia,supplying obsolete and hard-to-find components to meet their specific needs.

With the principle of “Quality Parts,Customers Priority,Honest Operation,and Considerate Service”,our business mainly focus on the distribution of electronic components. Line cards we deal with include Microchip,ALPS,ROHM,Xilinx,Pulse,ON,Everlight and Freescale. Main products comprise IC,Modules,Potentiometer,IC Socket,Relay,Connector.Our parts cover such applications as commercial,industrial, and automotives areas.

We are looking forward to setting up business relationship with you and hope to provide you with the best service and solution. Let us make a better world for our industry!



Contact us

Tel: +86-755-8981 8866 Fax: +86-755-8427 6832

Email & Skype: info@chipsmall.com Web: www.chipsmall.com

Address: A1208, Overseas Decoration Building, #122 Zhenhua RD., Futian, Shenzhen, China



SGX 5150

IoT Device Gateway

CONNECT YOUR
BUSINESS-CRITICAL
ASSETS AND DATA
securely to your enterprise network.



Accelerate your path to IoT with our next generation Lantronix® SGX 5150 IoT device gateway. Its advanced turnkey design provides everything you need for secure wireless connectivity.

High-Performance Wi-Fi®



Your device requires a trustworthy wireless connection. Equipped with industry-leading high-performance 5GHz (802.11ac) Wi-Fi®, the SGX 5150 ensures reliable and persistent wireless enterprise connections and bandwidth for high-speed data processing.

TruPort® Security

The SGX 5150 platform was designed from the ground up to support critical enterprise, government and military standards, so that your private data is delivered securely with absolute data integrity.



Essential IoT Applications



IoT deployment and network integration has never been easier. The SGX 5150 includes essential IoT apps that deliver multi-interface connectivity, full networking, extensive security, industry-leading device configuration management and robust system diagnostics so that you can quickly accelerate to an IoT business solution.

Multi-Interface Access

The SGX 5150 provides multiple interface options to connect to virtually any asset with singular or dual RS-232/485 serial ports, USB 2.0 with host and device modes and Ethernet interfaces. The SGX 5150 provides an elegant and robust solution for organizations seeking compatibility with multiple devices or product lines.



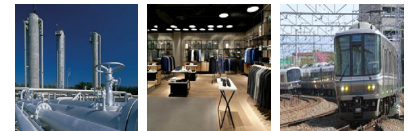
Perfect For:



Energy

Cities

Medical



Industrial

Retail

Transportation

Advanced Turnkey Design

- Easily configure and connect to the enterprise network, out-of-the-box
- Unique Device ID feature allows you to make your device visible to authorized users
- Linux SDK and Python runtime services allow quick development and deployment of custom apps
- Experience the Lantronix industrial design quality and reliability
- Wi-Fi® Alliance and USB Certification*



Features and Specifications

Wireless Specifications

- 5G Wi-Fi (IEEE 802.11ac)
 - 1x1 ac (MCS0 - MCS9)
 - 20, 40 and 80 MHz Channels with optional SGI
- IEEE 802.11 n
 - 1x1 n (MCS0 - MCS7)
 - 20 MHz and 40 MHz channel width with optional SGI
- Advanced 802.11 n/ac Features
 - Transmit Beamforming
 - Tx/Rx Low Density Parity Check (LDPC)
 - Rx Space Time Block Coding (STBC)
- Bluetooth/WLAN Coexistence

Ethernet Specifications

- IEEE 802.3 MAC and PHY, 10BaseT and 100BaseT
- 802.3at Class 2 Powered Device
- Auto-Negotiation/Auto MDIX, Full-duplex and Half-duplex

USB Specifications

- Configurable USB 2.0 HS/FS port with USB type C connector
- USB Device (default setting) powered by a VBUS 5V
- USB configurable host can provide VBUS 5V 0.5A (power supply or PoE)

Physical Interface

- 2xRJ-45 Serial Ports, can be RS-232 or Multi-protocol RS-232/422/485
- Data rates – up to 921 Kbps
- 15 KV ESD Protection
- (1) USB port – Type C Host / Device Connector
- (1) RJ-45 Ethernet port, 10/100Mbps, 1.5 KV Surge Isolation
- (1) Reset Button
- (1) WPS Button
- (1) Barrel jack for 9-30VDC power input

LED Indicators

- System Status
- Wi-Fi Wireless Signal Strength
- Green/Red Simplified Diagnostics
- RJ-45 Ethernet (Activity/Link) – status handled through ports

Protocols

- DHCP Client, DHCP Server, DHCPv6 Client
- uPnP (Discovery), LCAP (77FE), Telnet, (S)FTP, HTTP(S)
- IPv4/IPv6, TCP, UDP, ICMP, ARP, Auto-IP, DNS, SNMP v2/v3

TruPort™ Security

- FIPS 140-2 Level 1 Certification*
- Enterprise Security (WPA2-Enterprise)
- WLAN Security
 - EAP-TLS
 - EAP-TTLS (MS-CHAPv2)
 - EAP-PEAPv0/EAP-MS-CHAP v2)
 - EAP-PEAPv1
 - EAP-FAST
- AES/CCMP and TKIP encryption, 802.11i
- WPA/WPA2 Pre-Shared Key (PSK) or IEEE 802.1X, AES-CCMP

Management Interfaces

- DeviceInstaller™
- Web Manager (HTML5 Browser HTTP/HTTPS)
- CLI (over serial ports, telnet or SSH)
- OTA Field upgradeable
- Supports SNMP v2, V3
- XML Configuration records via CLI or FTP

Wireless Features

- Soft Access Point
- Wi-Fi Direct
- Multiple Soft AP Connections
- Simultaneous Soft AP and Client mode
- Secure Com Port Redirector™

Environmental

- Extended Operating Temp: -40° to 70° C (-40° to 158° F)
- Extended Storage Temp: -40° to 85° C (-40° to 185° F)
- IP Rating: 30
- Relative Humidity: 5 to 95%, Non-condensing
- ESD tolerance: Contact Discharge= 4Kv; Air Discharge=15Kv

Power

- Input: DC barrel, 9-30 VDC (standard)
- Input: Power over Ethernet (optional)
- Input: USB Type C I/O connector
- Power Consumption = 1.9W typical without USB Load
- Power Consumption = 5.5W max with USB Load
- Optional Power Supply – (100-240 VAC, 50-60 Hz, 12 VDC @ 1A) with regional adapters
- Output: 5V / 500 mA via USB Type C connector (in Host mode) when used with the Optional Power Supply

Certifications

- FCC Part 15 Subpart B, Class B, Subpart C 15.247, Subpart E 15.407
- ICES-003:2012 Issue 5, Class B, RSS-Gen, Issue 4, 2014, RSS-102, Issue 5, 2015, RSS-247, Issue 1, 2015
- RED 2014/53/EU, EMCD 2014/30/EU, EN 300 328 V1.9.1, EN 301 489-1 V1.9.2, EN301 489-17 V2.2.1, EN 301 893 V1.8.1, EN 62311: 2008
- AS/NZS CISPR 22, AS/NZS 4268: A1: 2013, AS/NZS 2772.2VCCI, Japan Radio Cert Article 2-1 (19), (19-2), (19-3), (19-3-2)
- EN 55022:2010, EN 55024:2010, EN 61000-3-2:A2 2009, EN 61000-3-3: 2008
- UL 60950/CSA 22.2 No. 60950, IEC 60950 (or 62368-1)
- CE LVD 2014/35/EU, (CB, EN 60950-1:2006 + A11:2009 + A1:2010 + A12:2011 +A2 2013) or (62368-1)

Physical Dimensions

- Dimensions: 10.8cm (4.3 in) x 7.2cm (2.8 in) x 3.3cm (1.3 in)
- Weight: 0.28 kg (0.61 lb)

Warranty

- Industry-leading 5-Year Limited Warranty
- * Planned Features

Part Number	Description
SGX5150000US	SGX 5150 Wireless IoT Gateway, 802.11a/b/g/n/ac, USB, 10/100 Ethernet, US
SGX5150102US	SGX 5150 Wireless IoT Gateway, 802.11a/b/g/n/ac, 1xRS232 (RJ45), USB, 10/100 Ethernet, US
SGX5150103US	SGX 5150 Wireless IoT Gateway, 802.11a/b/g/n/ac, 1xRS232 (RJ45), USB, 10/100 Ethernet, PoE, US
SGX5150202US	SGX 5150 Wireless IoT Gateway, 802.11a/b/g/n/ac, 2xRS232 (RJ45), USB, 10/100 Ethernet, US
SGX5150205US	SGX 5150 Wireless IoT Gateway, 802.11a/b/g/n/ac, 2xRS485 (RJ45), USB, 10/100 Ethernet, PoE, US

SGX5150000ES	SGX 5150 Wireless IoT Gateway, 802.11a/b/g/n/ac, USB, 10/100 Ethernet, EU
SGX5150102ES	SGX 5150 Wireless IoT Gateway, 802.11a/b/g/n/ac, 1xRS232 (RJ45), USB, 10/100 Ethernet, EU
SGX5150103ES	SGX 5150 Wireless IoT Gateway, 802.11a/b/g/n/ac, 1xRS232 (RJ45), USB, 10/100 Ethernet, PoE, EU
SGX5150202ES	SGX 5150 Wireless IoT Gateway, 802.11a/b/g/n/ac, 2xRS232 (RJ45), USB, 10/100 Ethernet, EU
SGX5150205ES	SGX 5150 Wireless IoT Gateway, 802.11a/b/g/n/ac, 2xRS485 (RJ45), USB, 10/100 Ethernet, PoE, EU

SGX5150000JS	SGX 5150 Wireless IoT Gateway, 802.11a/b/g/n/ac, USB, 10/100 Ethernet, Japan
SGX5150102JS	SGX 5150 Wireless IoT Gateway, 802.11a/b/g/n/ac, 1xRS232 (RJ45), USB, 10/100 Ethernet, Japan
SGX5150103JS	SGX 5150 Wireless IoT Gateway, 802.11a/b/g/n/ac, 1xRS232 (RJ45), USB, 10/100 Ethernet, PoE, Japan
SGX5150202JS	SGX 5150 Wireless IoT Gateway, 802.11a/b/g/n/ac, 2xRS232 (RJ45), USB, 10/100 Ethernet, Japan
SGX5150205JS	SGX 5150 Wireless IoT Gateway, 802.11a/b/g/n/ac, 2xRS485 (RJ45), USB, 10/100 Ethernet, PoE, Japan

Accessories	Description
SGX5150BKT	SGX 5150 Mounting Bracket
520-154-R	Power Supply, Wall Cube, 12VDC 10W, 2.1mm Barrel Connector, 4 AC Plugs, Efficiency Level VI, PSE, RoHS
520-160-R	Power Supply, Desktop, 60601-1, 100-240VAC, 12VDC 10W, 2.1mm Barrel Connector, 150cm Cord, C14 AC Input, 0-40C, Efficiency Level VI, RoHS
500-247-R	Cable, USB Type C to USB-A Male 2.0, 1000mm, Black, RoHS
500-110-R	Cable, CAT5E Ethernet, 10'
500-101	Cable, RJ45 to DB9M DTE, 6' for Connection to a DB9F DCE Device
200.2071	Adapter, RJ45 to DB9M DTE, for Connection to a DB9F DCE Device

Ordering Information

Americas

800.422.7055
 sales@lantronix.com
 http://www.lantronix.com
 NASDAQ: LTRX

Asia/Pacific/Japan

+852 3428.2338
 asiapacific_sales@lantronix.com
 China: +86.021.6237.8868
 Shanghai@lantronix.com
 Japan: +81.3.3273.8850
 Sales_Japan@lantronix.com
 India: +91.994.551.2488
 Sales_India@lantronix.com

Europe

+31 (0) 76.52.3.6.74 4
 EMEA@lantronix.com

