



Chipsmall Limited consists of a professional team with an average of over 10 year of expertise in the distribution of electronic components. Based in Hongkong, we have already established firm and mutual-benefit business relationships with customers from,Europe,America and south Asia,supplying obsolete and hard-to-find components to meet their specific needs.

With the principle of “Quality Parts,Customers Priority,Honest Operation,and Considerate Service”,our business mainly focus on the distribution of electronic components. Line cards we deal with include Microchip,ALPS,ROHM,Xilinx,Pulse,ON,Everlight and Freescale. Main products comprise IC,Modules,Potentiometer,IC Socket,Relay,Connector.Our parts cover such applications as commercial,industrial, and automotives areas.

We are looking forward to setting up business relationship with you and hope to provide you with the best service and solution. Let us make a better world for our industry!



Contact us

Tel: +86-755-8981 8866 Fax: +86-755-8427 6832

Email & Skype: info@chipsmall.com Web: www.chipsmall.com

Address: A1208, Overseas Decoration Building, #122 Zhenhua RD., Futian, Shenzhen, China



SPC-40-E
Standard Product Catalog



Bud Industries, Inc.

#1
Preferred
Enclosure
Brand

2009 Hearst
Business Survey

**Electronic
Enclosures**

Racks

Cabinets

Accessories



From steel to aluminum, plastic to fiberglass,
the Bud line of enclosures and racks is the
most extensive and often the most affordable.

*More than 2300 enclosures
available for same-day shipping.*

Enclosures Right Now, Right Price.



440-946-3200 • www.budind.com

CONTENTS

NUMERICAL INDEX - Pages 76-80



LARGE CABINET RACKS

| | |
|---------------------------------|-----|
| 19"/23" Equipment Cabinet | 9 |
| Budrack Professional Series | 1 |
| Distribution | 10 |
| Econoglas and See-Thru Doors | 4 |
| Economizer | 4-5 |
| NEMA12 Cabinet | 8 |
| Series 2000 | 6 |
| Series 60 | 7 |
| Server Rack Professional Series | 2 |
| Turnkey Cabinet Assy. | 10 |
| Valurack | 3 |



CABINETS

| | |
|--------------------|----|
| Classic II | 31 |
| Econocab | 32 |
| Mega Network | 31 |
| Universal Network | 31 |
| VisionCab | 30 |
| Wall Mount Cabinet | 30 |



OPEN RACKS

| | |
|-------------------------------|-------|
| Aluminum | 11 |
| Cable Management Rack | 14 |
| Double Rack | 13 |
| Heavy Duty Steel | 12 |
| Open Rack Assembly | 11-14 |
| Series RR-1263 | 12 |
| Series RR-1367 | 12 |
| Server Rack Assy | 14 |
| Specialty Communication Racks | 14 |
| Swing Frame | 11 |
| Table Top | 12 |
| Wall Mount | 11 |



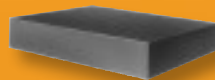
COMMUNICATIONS

| | |
|----------------------------|-----------|
| 19"/23" Equipment Cabinet | 9 |
| Cable Management | 14, 18-20 |
| Distribution Cabinet Assy | 10 |
| Double Rack | 13 |
| Hinged Patch Panel Bracket | 22 |
| Mega Network Cabinet | 31 |
| Open Racks | 11-14 |
| Turnkey Cabinet Assy | 10 |
| Universal Network Cabinet | 31 |



RACK MOUNTABLE CHASSIS

| | |
|--------------------------|----|
| Plastic Rack Mount Box | 29 |
| Rack Mount Chassis | 28 |
| Small Rack Mount Chassis | 28 |
| Valuline | 29 |



CHASSIS

| | |
|---------------|----|
| Aluminum | 41 |
| Bottom Plates | 41 |
| Panel | 41 |



SHEET METAL BOXES

| | |
|---|----|
| NEMA 1 Junction Boxes with Hinged Cover | 36 |
| NEMA 1 Junction Boxes with Screw Cover | 36 |
| Push Button Boxes | 48 |
| SN-Series NEMA | 49 |
| SNB-Series NEMA | 50 |

DIE-CAST ALUMINUM BOXES

| | |
|---|-------|
| Aluminum Die-Cast NEMA | 44 |
| Die-Cast Aluminum NEMA 4X Box with External Mounting Brackets | 47 |
| Econobox | 42-43 |
| AN-Series NEMA | 45-47 |
| CN-Series NEMA | 47-48 |
| Wall Mounting Boxes | 42-48 |

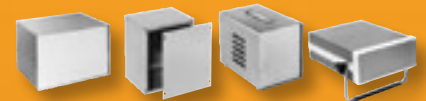
FIBERGLASS BOXES

| | |
|--------------------------------|----|
| NFL-Series Fiberglass NEMA Box | 49 |
|--------------------------------|----|



PLASTIC BOXES

| | |
|---|-----------|
| Blue Transparent NEMA 4X | 56 |
| DIN Rail | 64 |
| Grabber | 59-63 |
| Hand-Held Plastic | 71 |
| Instrument Case | 33 |
| NEMA 4X | 52-53, 57 |
| NEMA Heavy Duty | 56 |
| PI-Series | 67 |
| Plastibox | 68-70 |
| Plasticase | 65-67 |
| Plastic NEMA 4X Box w/External Mtg. Bracket | 58 |
| Potting Box | 75 |
| Power Plug Box | 74 |
| Rack Mount Box | 29 |
| UL/NEMA/IEC | 52-53 |
| USB Enclosure | 74 |
| Utilibox | 72-73 |



SMALL CABINETS

| | |
|--------------------------|----|
| Aluminum Instrument Case | 33 |
| Champion | 37 |
| Compucab | 40 |
| Contour Utility | 34 |
| Converta Box | 34 |
| Extruded Aluminum Box | 39 |
| Futura | 39 |
| Keyboard | 35 |
| Miniboxes | 40 |
| Portacabs | 36 |
| Shadow | 35 |
| Showcase | 32 |
| Slimcab | 35 |
| Slope | 39 |
| Sloping Panel | 38 |
| Sloping Panel Prestige | 38 |
| Small Wall Mount Box | 38 |
| Transi-case | 35 |
| TR-Series | 34 |
| Utility | 34 |

BRACKETS

| | |
|------------------------------|-------|
| Adapter Mounting | 20 |
| Cable | 18-20 |
| Chassis Support | 18 |
| Equipment Tie Down | 19 |
| Hinged Patch Panel Bracket | 22 |
| Slide Mounting | 17 |
| Triangular Mounting Brackets | 21 |

ACCESSORIES

| | | | | | |
|------------------------------|-------|----------------------|----|-------------------------|-----------|
| Blowers/Fans | 15 | Fan Tray Assemblies | 16 | Panels | 25 |
| Cable Management | 18-20 | Foot, Misc. Hardware | 26 | Power Outlet Strips | 21 |
| Casters/Levelers | 26 | Handles | 27 | Shelves | 20, 22-25 |
| Desktops | 22-23 | NEMA Cable Glands | 55 | Slides | 17 |
| Drawers | 22 | Panel Extender | 19 | Temperature Control | 17 |
| Econoglas and See-Thru Doors | 4 | Panel Mounting Rails | 18 | UL/NEMA/IEC Accessories | 52-55 |

BUDRACK PROFESSIONAL SERIES

The Budrack Professional Series provides all of the features that one expects in a high end Cabinet Rack and more.



Design Features

- ◆ Sturdy and durable steel construction. Mounting rails — 14 GA, other parts 18 GA
- ◆ Furnished complete with ventilated tempered glass front door, locking rear door, removable sides
- ◆ EIA 310 compliant for 19" mount equipment
- ◆ Two pairs of fully adjustable panel mounting rails included. The panel mounting rails include unique notch at each "u" point to allow for rapid equipment location identification
- ◆ Top mount fan box installed. Two fans for 23" depth, four fans for 31" depth
- ◆ Includes ventilated shelves (one shelf in the 24U high cabinet, two shelves in the 40U and 45U cabinets)
- ◆ Includes four casters and four levelers (unassembled)
- ◆ Large cutout in base. Cutout comes covered by 2.5" deep metal cover plates that allow for adjustable opening providing as much or as little open space for cable access
- ◆ 2 additional 13" x 2.5" cutouts in front and rear of the base also come with readily removable covers
- ◆ Vented at top and bottom of sides, which also can be locked
- ◆ Comes fully assembled
- ◆ Finish: Black textured powder coating — easy to clean
- ◆ Other sizes and modifications are available upon request

ORDERING INFORMATION

| Catalog No. | Panel Space (inches) (width x height) | "U" | Overall Dimensions | Clear Inside Depth (inches) | Wt. (Lbs.) | Additional Fixed Shelf | Wt. (Lbs.) |
|-------------|--|-----|--------------------------------------|--------------------------------|---------------|---------------------------|---------------|
| | | | (inches) (width x depth x height) | | | | |
| BRP-12202 | 19.00 x 42.00 | 24 | 23.62 x 23.62 x 49.40 | 20.88 | 222 | SH-12706 | 5 |
| BRP-12206 | 19.00 x 70.00 | 40 | 23.62 x 23.62 x 77.40 | 20.88 | 305 | SH-12706 | 5 |
| BRP-12208 | 19.00 x 78.75 | 45 | 23.62 x 23.62 x 86.15 | 20.88 | 327 | SH-12706 | 5 |
| BRP-12212 | 19.00 x 42.00 | 24 | 23.62 x 31.50 x 49.40 | 28.75 | 254 | SH-12708 | 6 |
| BRP-12216 | 19.00 x 70.00 | 40 | 23.62 x 31.50 x 77.40 | 28.75 | 345 | SH-12708 | 6 |
| BRP-12218 | 19.00 x 78.75 | 45 | 23.62 x 31.50 x 86.15 | 28.75 | 370 | SH-12708 | 6 |

• Contact the factory for other sizes and finishes and modifications

SERVER RACK PROFESSIONAL SERIES



New sizes provide additional 3.50" of space in front and rear both for wiring and accessories. Sturdy welded steel construction. Comes with a fan box with 4 fans and ventilated shelves. Ships fully assembled.

Design Features

Bud's Server Rack Professional Series provides all of the features that one expects in a high end Server Rack and more! Each Rack includes the following:

- ◆ Sturdy welded construction with 1700 lb. weight capacity
- ◆ Fully Ventilated locking front door that can be mounted left or right
- ◆ Split rear door with solid triple point latching system.
- ◆ Two pairs of panel mounting rails with unique notches at "u" increments to ease equipment installation
- ◆ Panel mounting rails are fully adjustable front and back
- ◆ Fan box with 4 fans
- ◆ Includes four casters and four levelers (unassembled)
- ◆ Includes ventilated shelves (one with 27U cabinet and two with 42U cabinet)
- ◆ 6 cable management brackets
- ◆ Sides are easily removable to allow quick assembly access
- ◆ Rack made of 18 ga. Steel with 14 ga. panel mounting rails
- ◆ Open base for convenient cable access
- ◆ Covered slot in top for additional cable access
- ◆ Vented at top and bottom of sides
- ◆ Comes fully assembled

Finish

Black textured powder coating
(easy to clean)



ORDERING INFORMATION

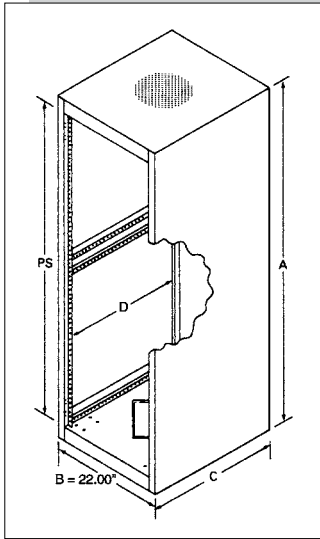
| Catalog No. | Panel Space (inches) (width x height) | "U" | Overall Dimensions (width x depth x height) (inches) | Clear Inside Depth (inches) | Cabinet Wgt. (Lbs.) | Add'l Shelves | Shelf Wgt. (Lbs.) |
|-------------|--|-----|--|--------------------------------|------------------------|------------------|----------------------|
| SRP-8131 | 19.00 x 47.25 | 27 | 23.62 x 35.43 x 52.32 | 28.19" | 270 | | |
| SRP-8134 | 19.00 x 73.50 | 42 | 23.62 x 35.43 x 78.70 | 28.19" | 360 | SH-12709 | 8 |
| SRP-8137 | 19.00 x 78.75 | 45 | 23.62 x 35.43 x 83.95 | 28.19" | 378 | | |
| SRP-8141 | 19.00 x 47.25 | 27 | 23.62 x 43.30 x 52.32 | 36.06" | 293 | | |
| SRP-8144 | 19.00 x 73.50 | 42 | 23.62 x 43.30 x 78.70 | 36.06" | 390 | SH-12711 | 10 |
| SRP-8147 | 19.00 x 78.75 | 45 | 23.62 x 43.30 x 83.95 | 36.06" | 409 | | |

*Additional 3.50" of space in front and rear both for wiring and accessories.
Contact the factory for other sizes and finishes*

UPRIGHT CABINET RACKS

VALURACK

This incredibly value-packed cabinet rack offers ready-to-use capability, welded-together strength and sturdiness, and unlimited versatility, at an unbeatable cost. It will accept all standard Bud accessories including doors, shelves, casters, and levelers.



Design Features

- ◆ EIA-310 compliant for 19" panel width equipment
- ◆ Integral, full height, front panel mounting rails
- ◆ Provisions for additional fully adjustable panel mounting rails
- ◆ Large 10.00" square cable access in bottom
- ◆ Ventilated top accepts Bud #FN-1282 Exhaust Fan (page 16)
- ◆ Suggested 700# equipment load capacity (higher when used with optional adjustable panel mounting rails for 4-point equipment mounting)
- ◆ Other sizes and colors are available by request

Finish

Black Texture

Accessories

Basic rack accepts many optional accessories including standard Economizer Cabinet Rack doors (mounted front or rear). When used with optional adjustable panel mounting rails, rack accepts all other standard Bud accessories. See pages 15–27 for more information.

| ValuRack SERIES | | | | | OPTIONAL ACCESSORIES | | | |
|----------------------|-------------|--------------------------|--------------------|-------------|----------------------|----------------------|-------------------------|---------------------------|
| Ordering Information | | | | | Mounting Rails | Steel Doors | | Econoglas Door w/Key Lock |
| Catalog Number | Panel Space | Overall Size H x W x D | Clear Inside Depth | Weight Lbs. | Catalog Number | Catalog Number Solid | Catalog Number Louvered | Catalog Number |
| VR-8924 | 61.25" | 66.56" x 22.00" x 26.00" | 24.00" | 106 | PMR-9452 | ER-16534 | ER-16594 | V-9765-L |
| VR-8925 | 70.00" | 75.31" x 22.00" x 26.00" | 24.00" | 114 | PMR-9453 | ER-16535 | ER-16595 | V-9766-L |
| VR-8926 | 78.75" | 84.06" x 22.00" x 26.00" | 24.00" | 121 | PMR-9454 | ER-16536 | ER-16596 | V-9767-L |

Typical Optional Accessories

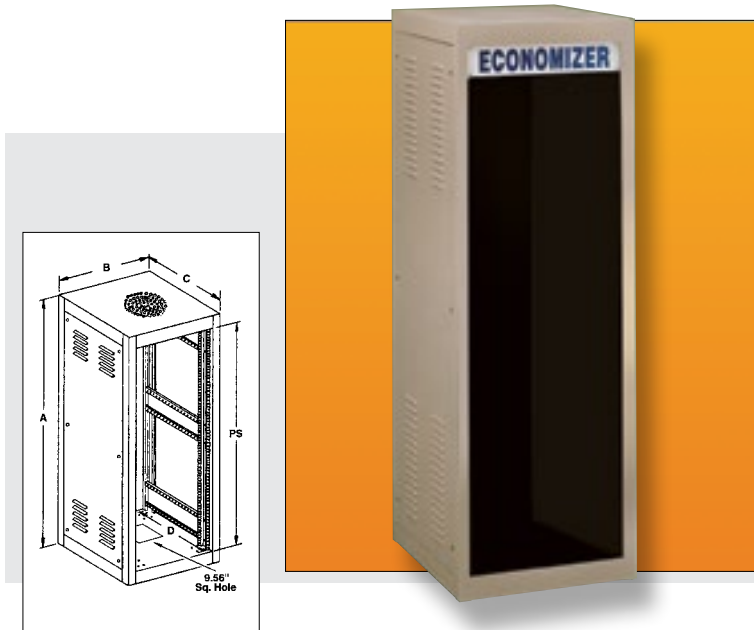
| Catalog No. | Description |
|-------------|-----------------------------------|
| RC-7758-PR | Casters |
| RL-7771 | Leveler Kit |
| SH-2385* | Shelf, Stationary, Ventilated |
| 60-2381* | Shelf, Stationary, Non-Ventilated |
| SH-2393* | Shelf, Sliding, Ventilated |
| SH-2389* | Shelf, Sliding, Non-Ventilated |
| POS-194-S | Rack Mount Power Outlet Strip |
| FN-1282 | Exhaust Fan |
| FT-1973 | Fan Tray - 3 Fans |
| FT-1976 | Fan Tray - 6 Fans |
| FT-1979 | Fan Tray - 9 Fans |
| PA-1101-BT | 1-U Panel |
| PA-1102-BT | 2-U Panel |
| PA-1103-BT | 3-U Panel |

* Requires optional panel mounting rails

UPRIGHT CABINET RACKS

ECONOMIZER

This high quality, low cost cabinet rack has a 19" panel width in both ventilated and non-ventilated versions.



Finishes

Sand Texture (S), Royal Blue Texture (RB) and Black Texture (BT) are standard. Available in other Bud textured finishes at no extra cost.

Design Features

- ◆ Welded Frame: 14-gauge steel vertical rails. 16-gauge steel top and bottom. Uniquely designed, 16-gauge steel rail supports. Furnished complete with removable sides, rear door and one pair of panel mounting rails
- ◆ Panel Mounting Rails: 12-gauge steel. Fully adjustable, tapped #10-32 in front on E.I.A. universal spacing. (Use #7346 screws - order separately.) Separate flange with .28" diameter holes provided for mounting accessories
- ◆ Side Panel: 20-gauge steel. Removable from outside for easy access
- ◆ Bottom: Pierced for RC-7758 casters, and with one 9.56" square hole and four 1.11" knockouts for cable access
- ◆ 1200# equipment load capacity
- ◆ 24" panel width cabinets available on special order

Ventilated Features

- ◆ Cabinet sides and door feature ventilating louvers. Ventilated cabinet top has a perforated area using .25" dia. holes on .31" staggered centers, inside a 9.69" dia. bolt circle. This provides a 58% open area. Holes provided for mounting a 10.00" dia. exhaust fan (Bud Fan No. FN-1282.) See page 16.

ECONOGLAS AND SEE-THRU DOORS

For Economizer, ValuRack, 60 and 2000 Series Upright Cabinet Racks

| Econoglas Door (fits Economizer and ValuRacks) | | See-Thru Door (fits 60 and 2000 Series) | |
|--|-------------|---|-------------|
| Catalog No. | Catalog No. | Panel Space Height | Weight Lbs. |
| V-9760-L | V-9770-L | 21.00" | 6 |
| — | V-9771-L | 31.50" | 8 |
| V-9763-L | V-9772-L | 42.00" | 10 |
| V-9764-L | V-9773-L | 52.50" | 12 |
| V-9765-L | V-9774-L | 61.25" | 14 |
| V-9766-L | V-9775-L | 70.00" | 16 |
| V-9767-L | V-9776-L | 78.75" | 18 |

Design Features

Econoglas and See-Thru Doors

Aluminum frame door with gasketed .18" thick smoke gray plastic insert. Can be used in place of normal steel door. Comes standard with keylock and in 19" panel width. Econoglas door is used with Economizer and ValuRack upright cabinet racks. See-Thru door is used with 60 and 2000 Series upright cabinet racks.



See our online rack and accessory selector guide at www.budind.com/rackguide.html

All products can be custom modified to your specifications.

For full dimensional information, see our Web site at www.budind.com.

ECONOMIZER

ECONOMIZER RACKS

19" Panel Width

| Catalog Number Non-Ventilated | Catalog Number Ventilated | Panel Space PS | Outside Height A | Outside Width B | Outside Depth C | Clear Inside Depth D | Weight Lbs. |
|----------------------------------|------------------------------|-------------------|---------------------|--------------------|--------------------|-------------------------|----------------|
| ER-16502 | ER-16602 | 42.00" | 47.31" | 22.00" | 18.50" | 17.00" | 110 |
| ER-16503 | ER-16603 | 52.50" | 57.81" | 22.00" | 18.50" | 17.00" | 124 |
| ER-16504 | ER-16604 | 61.25" | 66.56" | 22.00" | 18.50" | 17.00" | 139 |
| ER-16505 | ER-16605 | 70.00" | 75.31" | 22.00" | 18.50" | 17.00" | 151 |
| ER-16506 | ER-16606 | 78.75" | 84.06" | 22.00" | 18.50" | 17.00" | 163 |
| ER-16511 | | 21.00" | 26.31" | 22.00" | 25.50" | 24.00" | 94 |
| ER-16512 | ER-16612 | 42.00" | 47.31" | 22.00" | 25.50" | 24.00" | 128 |
| ER-16513 | ER-16613 | 52.50" | 57.81" | 22.00" | 25.50" | 24.00" | 145 |
| ER-16514 | ER-16614 | 61.25" | 66.56" | 22.00" | 25.50" | 24.00" | 162 |
| ER-16515 | ER-16615 | 70.00" | 75.31" | 22.00" | 25.50" | 24.00" | 175 |
| ER-16516 | ER-16616 | 78.75" | 84.06" | 22.00" | 25.50" | 24.00" | 189 |
| ER-16521 | | 21.00" | 26.31" | 22.00" | 30.75" | 29.25" | 109 |
| ER-16522 | ER-16622 | 42.00" | 47.31" | 22.00" | 30.75" | 29.25" | 143 |
| ER-16523 | ER-16623 | 52.50" | 57.81" | 22.00" | 30.75" | 29.25" | 160 |
| ER-16524 | ER-16624 | 61.25" | 66.56" | 22.00" | 30.75" | 29.25" | 180 |
| ER-16525 | ER-16625 | 70.00" | 75.31" | 22.00" | 30.75" | 29.25" | 194 |
| ER-16526 | ER-16626 | 78.75" | 84.06" | 22.00" | 30.75" | 29.25" | 209 |

For full dimensional information, see our Web site at www.budind.com.

OPTIONAL ACCESSORIES

19" Panel Width Racks

| Fits Panel Space | Mounting Rails Catalog No. | Steel Door Catalog No. | Econoglas Door with Key Lock Catalog No. | Louvered Steel Door Catalog No. |
|---------------------|-------------------------------|---------------------------|--|---------------------------------------|
| 21.00" | PMR-9448 | ER-16531 | V-9760-L | |
| 42.00" | PMR-9450 | ER-16532 | V-9763-L | ER-16592 |
| 52.50" | PMR-9451 | ER-16533 | V-9764-L | ER-16593 |
| 61.25" | PMR-9452 | ER-16534 | V-9765-L | ER-16594 |
| 70.00" | PMR-9453 | ER-16535 | V-9766-L | ER-16595 |
| 78.75" | PMR-9454 | ER-16536 | V-9767-L | ER-16596 |

Leveler Kit: One pair of levelers with mounting brackets and all mounting hardware. Leveler and caster cannot be used at the same location. Leveler Kit Catalog No.: RL-7770

Add-A-Rack System: Used to combine two or more racks into one integral system. Available in all sizes.

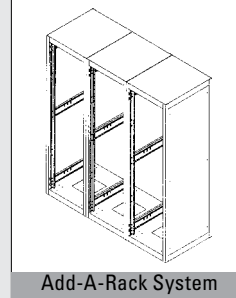
Econoglas Door: Aluminum framed, smoke gray plastic door that can be used in place of normal steel doors.

Mounting Rails: One pair of mounting rails is provided. Some accessories may require two sets of rails. Refer to accessory chart for additional sets.

Doors: Rear door provided. Optional Econoglas and steel front doors are available.

Accessories: The complete line of Bud standard accessories are compatible with the Economizer Rack. See pages 15-27.

ADD-A-RACK SYSTEM



Add-A-Rack System

When it is desirable to develop a series of racks into an integral system, Add-A-Rack assemblies can be used to obtain the optimum width and, at the same time, reduce costs considerably. Assembly consists of the welded frame, rear door, and one pair of panel mounting rails, that are used on the cabinet rack but are minus the side panels.

OPTIONAL ACCESSORIES

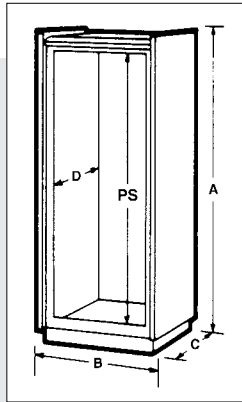
Add-A-Rack

| Catalog No. Non-Vented | Catalog No. Vented | Weight Lbs. |
|---------------------------|-----------------------|----------------|
| ER-16552 | ER-16652 | 95 |
| ER-16553 | ER-16653 | 106 |
| ER-16554 | ER-16654 | 118 |
| ER-16555 | ER-16655 | 127 |
| ER-16556 | ER-16656 | 136 |
| ER-16561 | | 83 |
| ER-16562 | ER-16662 | 107 |
| ER-16563 | ER-16663 | 119 |
| ER-16564 | ER-16664 | 132 |
| ER-16565 | ER-16665 | 140 |
| ER-16566 | ER-16666 | 150 |
| ER-16571 | | 95 |
| ER-16572 | ER-16672 | 117 |
| ER-16573 | ER-16673 | 128 |
| ER-16574 | ER-16674 | 143 |
| ER-16575 | ER-16675 | 151 |
| ER-16576 | ER-16676 | 162 |

UPRIGHT CABINET RACKS

SERIES 2000

Here are electronic enclosures that do more than house equipment. The sheer square lines of the Series 2000 and its symmetrical styling is the result of the experience and perception Bud designers have. All Series 2000 cabinet racks include welded frame, sides, top, and rear door.



Design Features

- ◆ Anodized aluminum extrusion top trim
- ◆ All welded 14 gauge steel frame with "U" shaped 16 gauge steel panel mounting rail supports
- ◆ Door, 20 gauge steel
- ◆ Sides and top, 18 gauge steel
- ◆ Adjustable front and rear panel mounting rails tapped #10-32 on E.I.A. universal spacing (use #7346 screws - order separately)
- ◆ Accommodates 19" wide E.I.A. Panels
- ◆ Bottom pierced for RC-7758 casters
- ◆ 1.109 inch diameter knockout holes in base
- ◆ 1200# equipment load capacity
- ◆ Ventilated version available upon request

Finishes

Gray Texture (GT) or Royal Blue Texture (RB)

Available in other Bud textured finishes at no extra cost

Accessories

See pages 15–27.

24" Panel Width Racks available on Special Order

See page 4 for See-Thru Doors

Bonus Features

- ◆ Interiors are accessible from front and rear for easy installation and maintenance of components
- ◆ Readily removable rear door
- ◆ Shipped completely assembled

SERIES 2000

Upright Cabinet Racks

| Catalog No.* | Panel Space (PS) | Outside Height (A) | Outside Width (B) | Outside Depth (C) | Clear Inside Depth (D) | Weight (Lbs.) |
|--------------|------------------|--------------------|-------------------|-------------------|------------------------|---------------|
| E-2000 | 21.00" | 30.25" | 24.19" | 23.87" | 20.5 | 119 |
| E-2003 | 42.00" | 51.25" | 24.19" | 23.87" | 20.5 | 168 |
| E-2004 | 52.50" | 61.75" | 24.19" | 23.87" | 20.5 | 195 |
| E-2005 | 61.25" | 70.50" | 24.19" | 23.87" | 20.5 | 216 |
| E-2006 | 70.00" | 79.25" | 24.19" | 23.87" | 20.5 | 233 |
| E-2007 | 78.75" | 88.00" | 24.19" | 23.87" | 20.50" | 260 |
| E-2008 | 21.00" | 30.25" | 24.19" | 27.37" | 24.00" | 129 |
| E-2011 | 42.00" | 51.25" | 24.19" | 27.37" | 24.00" | 179 |
| E-2012 | 52.50" | 61.75" | 24.19" | 27.37" | 24.00" | 215 |
| E-2013 | 61.25" | 70.50" | 24.19" | 27.37" | 24.00" | 234 |
| E-2014 | 70.00" | 79.25" | 24.19" | 27.37" | 24.00" | 244 |
| E-2015 | 78.75" | 88.00" | 24.19" | 27.37" | 24.00" | 268 |
| E30-2000 | 21.00" | 30.25" | 24.19" | 32.62" | 29.25" | 150 |
| E30-2003 | 42.00" | 51.25" | 24.19" | 32.62" | 29.25" | 217 |
| E30-2004 | 52.50" | 61.75" | 24.19" | 32.62" | 29.25" | 248 |
| E30-2005 | 61.25" | 70.50" | 24.19" | 32.62" | 29.25" | 259 |
| E30-2006 | 70.00" | 79.25" | 24.19" | 32.62" | 29.25" | 303 |
| E30-2007 | 78.75" | 88.00" | 24.19" | 32.62" | 29.25" | 307 |

*Supplied with plain sides and plain rear door.

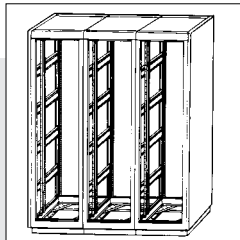
See our online rack and accessory selector guide at www.budind.com/rackguide.html

All products can be custom modified to your specifications.

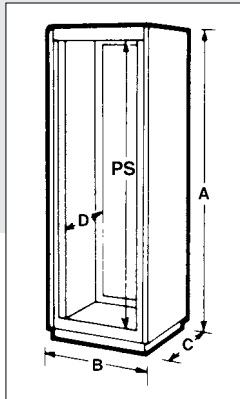
UPRIGHT CABINET RACKS

SERIES 60

These cabinet racks are proof of what Bud designers have striven for and achieved: Quality enclosures that enhance the function, appearance, and value of your products. All Series 60 Cabinet Racks include welded frame, sides, top, and rear door.



Add-A-Rack System



Finishes

Gray Texture (GT) or Royal Blue Texture (RB)

Available in other Bud textured finishes at no extra cost

Accessories

See pages 15–27

24" Panel Width Racks available on Special Order

See page 4 for See-Thru Doors

Design Features

- ◆ All welded 14 gauge steel frame with "U" shaped 16 gauge steel panel mounting rail supports
- ◆ Door, 20 gauge steel
- ◆ Sides and top, 18 gauge steel
- ◆ Adjustable front and rear panel mounting rails tapped #10-32 on E.I.A. universal spacing (use #7346 screws - order separately)
- ◆ Accommodates 19" wide E.I.A. panels
- ◆ Bottom pierced for RC-7758 casters
- ◆ 1.109" diameter knockout holes in base
- ◆ 1200# equipment load capacity
- ◆ Ventilated version available upon request

Bonus Features

- ◆ Interiors are accessible from front and rear for easy installation and maintenance of components
- ◆ One door furnished. May be used on front or rear
- ◆ Add-A-Rack System used to combine two or more enclosures into one integral system (same as cabinet rack except w/o sides)
- ◆ Shipped completely assembled

SERIES 60

Upright Cabinet Racks

| Catalog No. | Panel Space (PS) | Outside Height (A) | Outside Width (B) | Outside Depth (C) | Clear Inside Depth (D) | Weight Lbs. |
|-------------|------------------|--------------------|-------------------|-------------------|------------------------|-------------|
| 60-2300 | 21.00" | 29.62" | 24.06" | 22.00" | 20.50" | 112 |
| 60-2301 | 31.50" | 40.12" | 24.06" | 22.00" | 20.50" | 137 |
| 60-2302 | 42.00" | 50.62" | 24.06" | 22.00" | 20.50" | 162 |
| 60-2303 | 52.50" | 61.12" | 24.06" | 22.00" | 20.50" | 189 |
| 60-2304 | 61.25" | 69.87" | 24.06" | 22.00" | 20.50" | 215 |
| 60-2305 | 70.00" | 78.62" | 24.06" | 22.00" | 20.50" | 227 |
| 60-2306 | 78.75" | 87.37" | 24.06" | 22.00" | 20.50" | 244 |
| 60-2307 | 21.00" | 29.62" | 24.06" | 25.50" | 24.00" | 123 |
| 60-2308 | 31.50" | 40.12" | 24.06" | 25.50" | 24.00" | 145 |
| 60-2309 | 42.00" | 50.62" | 24.06" | 25.50" | 24.00" | 170 |
| 60-2310 | 52.50" | 61.12" | 24.06" | 25.50" | 24.00" | 202 |
| 60-2311 | 61.25" | 69.87" | 24.06" | 25.50" | 24.00" | 216 |
| 60-2312 | 70.00" | 78.62" | 24.06" | 25.50" | 24.00" | 231 |
| 60-2313 | 78.75" | 83.37" | 24.06" | 25.50" | 24.00" | 263 |
| 30-2300 | 21.00" | 29.62" | 24.06" | 30.75" | 29.25" | 154 |
| 30-2301 | 31.50" | 40.12" | 24.06" | 30.75" | 29.25" | 174 |
| 30-2302 | 42.00" | 50.62" | 24.06" | 30.75" | 29.25" | 202 |
| 30-2303 | 52.50" | 61.12" | 24.06" | 30.75" | 29.25" | 225 |
| 30-2304 | 61.25" | 69.87" | 24.06" | 30.75" | 29.25" | 245 |
| 30-2305 | 70.00" | 78.62" | 24.06" | 30.75" | 29.25" | 268 |
| 30-2306 | 78.75" | 87.37" | 24.06" | 30.75" | 29.25" | 294 |

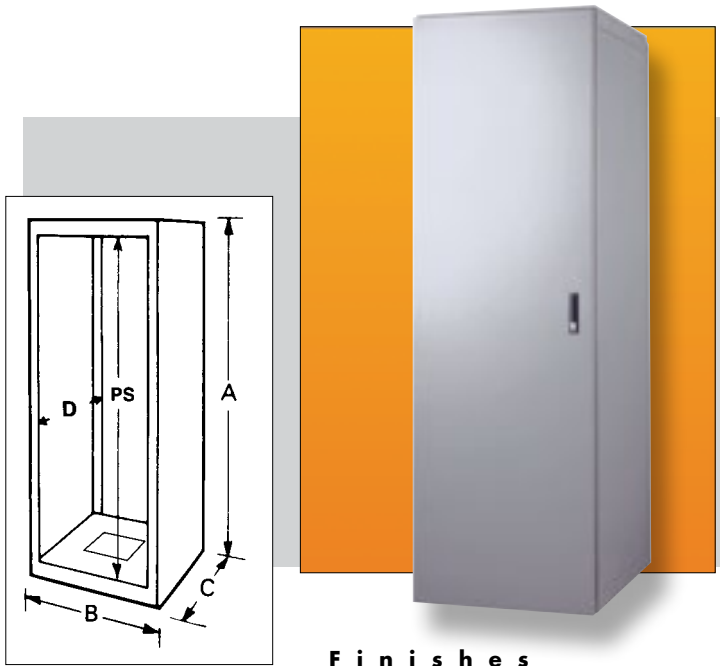
OPTIONAL ACCESSORIES

| Front Door | | Add-A-Rack | |
|-------------|-------------|-------------|-------------|
| Catalog No. | Weight Lbs. | Catalog No. | Weight Lbs. |
| 60-2340 | 8 | 60-2500 | 92 |
| 60-2341 | 11.5 | 60-2501 | 113 |
| 60-2342 | 15.5 | 60-2502 | 115 |
| 60-2343 | 19 | 60-2503 | 145 |
| 60-2344 | 22.2 | 60-2504 | 148 |
| 60-2345 | 25.5 | 60-2505 | 152 |
| 60-2346 | 29 | 60-2506 | 158 |
| 60-2340 | 8 | 60-2507 | 109 |
| 60-2341 | 11.5 | 60-2508 | 130 |
| 60-2342 | 15.5 | 60-2509 | 132 |
| 60-2343 | 19 | 60-2510 | 162 |
| 60-2344 | 22.2 | 60-2511 | 165 |
| 60-2345 | 25.5 | 60-2512 | 169 |
| 60-2346 | 29 | 60-2513 | 175 |
| 60-2340 | 8 | 30-2500 | 133 |
| 60-2341 | 11.5 | 30-2501 | 155 |
| 60-2342 | 15.5 | 30-2502 | 182 |
| 60-2343 | 19 | 30-2503 | 207 |
| 60-2344 | 22.2 | 30-2504 | 230 |
| 60-2345 | 25.5 | 30-2505 | 250 |
| 60-2346 | 29 | 30-2506 | 269 |

UL/NEMA RACKS



The Bud UL/NEMA 12 Cabinet Rack has been designed, tested, and certified to UL508 type 12 for use in moist, dirty, and dusty environments. It will accommodate 19" and/or 23" panel width equipment and comes in two popular heights.



Finishes

Gray Texture (GT). Available in other Bud textured finishes at no additional cost.

Design Features

- ◆ Tested and listed under UL508 Type 12 for use in USA and Canada
- ◆ Adheres to NEMA 1, 2, and 12 and IEC 529 IP55 requirements
- ◆ Oil resistant gaskets
- ◆ Comes complete with frame, locking front and rear doors, externally removable side panels, and four adjustable 19"/23" panel width panel mounting rails that accept either M6 metric or #12-24 threaded cage nuts and screws [order separately: #851-DLH (M6 cage nut), #9621 (M6 screw), #307 (#12-24 cage nut), #9260 (#12-24 screw)].
- ◆ Sturdy all-welded heavy steel construction
- ◆ Gasketed 9.5" cable access ports in the top and bottom
- ◆ Doors equipped with 4-point latches for positive sealing

Bonus Features

- ◆ Accepts most standard Bud accessories
- ◆ Optional see-through doors
- ◆ Optional full-height internal rear panels
- ◆ Optional base posts
- ◆ Optional panels for base posts
- ◆ Can be converted to 24" panel width with optional panel mounting rails
- ◆ Optional Add-A-Rack kit allows joining of multiple cabinets while maintaining sealing integrity

UL/NEMA 12 Cabinet Rack

| Catalog No. | Panel Space PS | Overall Dimensions A x B x C | Max. Clear Inside Depth D | Weight Lbs. |
|-------------|---------------------|---------------------------------|---------------------------------|----------------|
| NR-10025 | 70.00" x 19" or 23" | 75.31" x 27.00" x 30.75" | 29.25" | 321 |
| NR-10026 | 78.75" x 19" or 23" | 84.06" x 27.00" x 30.75" | 29.25" | 345 |

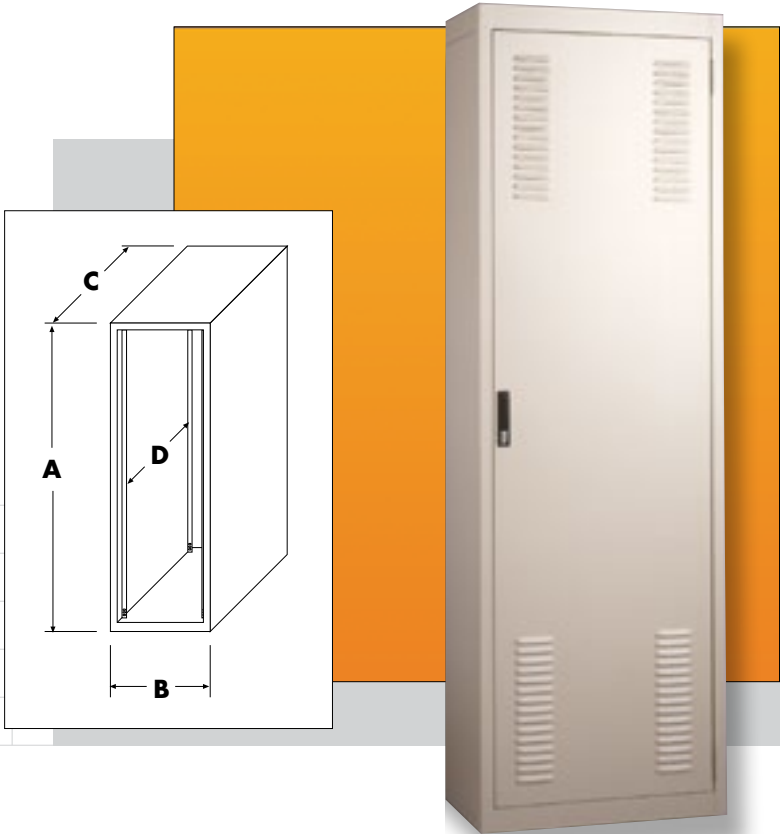
For full dimensional information, see our Web site at www.budind.com.

Optional Accessories

| Catalog No. | Description | Use with Cabinet | Wgt. Lbs. |
|-------------|-----------------------------|--------------------------------|--------------|
| NRB-10081 | Base Post Kit, 2.63" | NR-10025/NR-10026 | 5.1 |
| NRB-10084 | Base Panel Kit, 2.63" | NR-10025/NR-10026 | 5.1 |
| NRD-10055 | Plexiglas Doors 70.00" | NR-10025 | 60.0 |
| NRD-10056 | Plexiglas Doors 78.75" | NR-10026 | 66.0 |
| NRP-10065 | Internal Rear Panel, 70.12" | NR-10025 | 63.0 |
| NRP-10066 | Internal Rear Panel, 79.00" | NR-10026 | 69.0 |
| NRX-10080 | Add-A-Rack Kit | NR-10025/NR-10026 | 3.0 |
| RC-7764-PR | Casters, 550# | NR-10025/NR-10026 NRB-10081 | |
| RL-7766 | Levelers | NR-10025/NR-10026 NRB-10081 | |
| 851-DLH | Cage Nut, M6 | NR-10025/NR-10026 | |
| 9261 | Screw, M6 | NR-10025/NR-10026 | |
| 307 | Cage Nut, #12-24 | NR-10025/NR-10026 | |
| 9260 | Screw, #12-24 | NR-10025/NR-10026 | |

19"/23" EQUIPMENT CABINET RACKS

The Bud 19"/23" Equipment Cabinet Rack allows for the purchasing, stocking, and use of only one cabinet for all of your 19" and 23" panel width equipment installations. The unique panel mounting rail design allows the user to determine which panel width is required at the time of actual installation, eliminating expensive floor plans and equipment layouts to accommodate various cabinets for various equipment widths.



- ◆ Standard 84" high cabinet with 27" width and 30.75" overall depth
- ◆ 78.75" panel height with choice of either 19" or 23" panel width
- ◆ Sturdy all-welded steel frame
- ◆ Four 4.00" diameter cable access ports in the top and one 9.56" square cable access hole in the bottom
- ◆ Lockable ventilated front and rear doors
- ◆ Two pairs of L-shaped panel mounting rails that accept either M6 metric or #12-24 threaded cage nuts and screws (order separately: #851-DLH [M6 cage nut], #9621 [M6 screw], #307 [#12-24 cage nut], #9260 [#12-24 screw])
- ◆ Includes one #POS-194-S Surge Suppressed Power Outlet Strip
- ◆ 1200# equipment load capacity
- ◆ Accepts most Bud accessories (see pages 15–27)

Finish

Sand texture (S). Available in other Bud textured colors at no additional cost

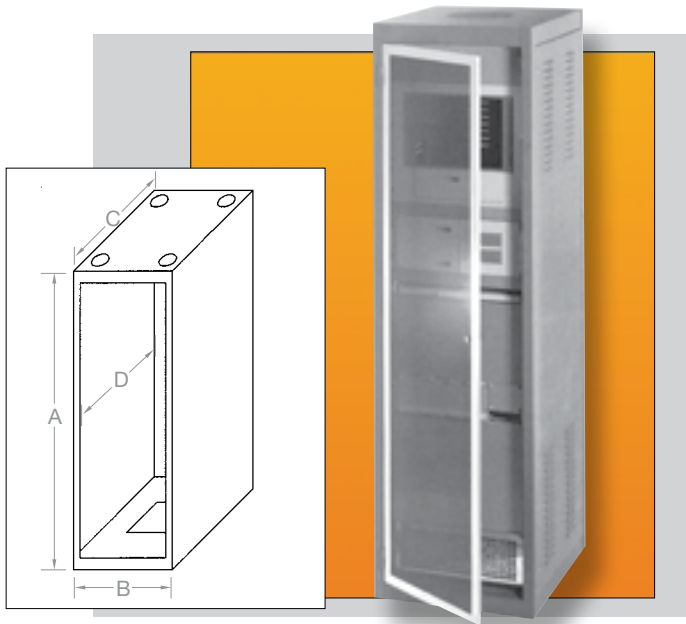
Ordering Information

| Catalog No. | Panel Space | Overall Dimensions A × B × C | Max. Clear Inside Depth D | Weight Lbs. |
|-------------|---------------------|---------------------------------|---------------------------------|----------------|
| DC-8010 | 78.75" × 19" or 23" | 84.06" × 27.00" × 30.75" | 29.25" | 256 |

For full dimensional information, see our Web site at www.budind.com.

TURNKEY

The Bud Turnkey Cabinet Assemblies will accommodate all of your requirements for housing electronic equipment in a secured environment. They come completely assembled for immediate use and accept all of Bud's standard accessories. For accessories see pages 15–27.



Design Features

- ◆ Welded steel cabinet rack similar to Economizer with louvered side panels and rear door, ventilated top suitable for FN-1282 exhaust fan
- ◆ Accept 19.00" E.I.A. width panels
- ◆ 1200# equipment load capacity
- ◆ Four 4.00" diameter cable access holes in the top and one 9.56" square hole in the base
- ◆ Installed Locking Econoglas front door
- ◆ Two pairs of installed full height panel mounting rails. (Use #7346 screws - order separately)
- ◆ Style A includes two SH-2385 ventilated shelves
- ◆ Style B includes leveler kits

Finishes

Style A: Sand texture (S), Black Texture (BT), and Royal Blue Texture (RB), are standard.
 Style B: Black Textured (BT) is standard
 Both styles are available in other Bud textured colors at no additional cost

Ordering Information

| Catalog Number | Style | Panel Space PS | Outside Height A | Outside Width B | Outside Depth C | Clear Inside Depth D | Weight Lbs. |
|----------------|-------|----------------|------------------|-----------------|-----------------|----------------------|-------------|
| DC-8002 | A | 70.00" | 75.31" | 22.00" | 25.50" | 24.00" | 208 |
| DC-8075 | B | 70.00" | 75.31" | 22.00" | 25.50" | 24.00" | 208 |
| DC-8076 | B | 78.75" | 84.06" | 22.00" | 25.50" | 24.00" | 215 |
| DC-8078 | B | 78.75" | 84.06" | 22.00" | 30.75" | 29.25" | 229 |

For full dimensional information, see our Web site at www.budind.com.

DISTRIBUTION

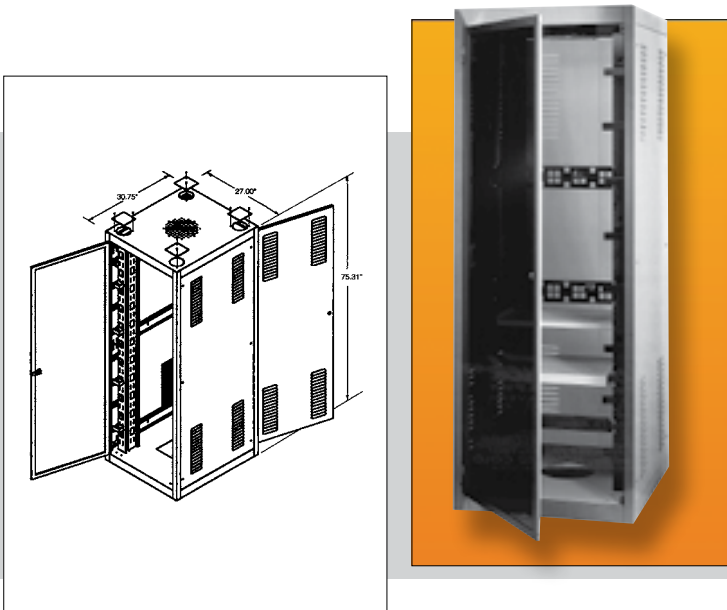
The Bud Communications Distribution Cabinet will fulfill your requirements for orderly and secure signal distribution. It comes completely assembled, ready for use and accepts all of Bud's standard accessories.

Design Features

- ◆ Large 27.00" wide × 75.31" high × 30.75" overall depth ventilated cabinet with 19.00" × 70.00" E.I.A. panel space
- ◆ Four 4.00" diameter cable access holes in the top and one 9.56" square hole in the base
- ◆ Two pairs of adjustable panel mounting rails (Use #7346 screws - order separately)
- ◆ Easy to use adjustable cable management system
- ◆ Lockable steel rear and see through Plexiglas front doors
- ◆ 1200# equipment load capacity

Finish

Black Texture (BT) is standard.
 Available in other Bud textured colors at no additional charge



Distribution Cabinet Assembly

| Catalog Number | Panel Space | Overall Dimensions H × W × D | Weight Lbs. |
|----------------|-----------------|--------------------------------|-------------|
| DC-8050 | 19.00" × 70.00" | 75.31" H × 27.00" W × 30.75" D | 270 |

For full dimensional information, see our Web site at www.budind.com.

OPEN RACKS

ALUMINUM RACKS



| Catalog Number | Panel Space | Height | Weight Lbs. |
|----------------|-----------------|--------|-------------|
| ARR-1272 | 77.00" x 19.00" | 84.00" | 37 |
| ARR-1276 | 42.00" x 19.00" | 50.00" | 27 |
| ARR-1294 | 77.00" x 23.00" | 84.00" | 40 |
| ARR-1296 | 42.00" x 23.00" | 50.00" | 30 |

For full dimensional information, see our Web site at www.budind.com.

Ideal for installation where easy access to components is a top priority. Each built for years of solid, trouble-free service, as well as obvious ease of service where frequent attention is desired (i.e. telephone switching systems, etc.). For accessories see pages 15–27.

Design Features

These aluminum racks are available in two heights with 19" and 23" wide panel spaces. Panel mounting holes are #12-24 tapped on E.I.A. universal spacing on both the front and rear flanges.

(Use #9260 screws - order separately)

Base Angles: .25" x 3.50" x 6.00"

Top Angles: .18" x 1.50" x 1.50"

Uprights: .15" x 3.00" web with two .18" x 1.26" flanges

Overall Width: 20.25" for 19" rack; 24.25" for 23" rack

Overall Depth: 15.00" base, 3.00" upright, 6.00" top

Racks have been tested to 1000# equipment load capacity

Finishes

Natural Finish (NF) or Black Texture (BT)

Features

Racks are shipped knocked down in one (1) carton, with all necessary assembly hardware included

OPEN RACKS

WALL MOUNT RACK



Design Features

These racks provide open rack provisions when floor mounting space is not available. They feature 19" wide panel space, with mounting holes tapped with #12-24 thread on E.I.A. universal spacing on both front and rear flanges (use #9260 screws – order separately) and are constructed of standard natural finish aluminum with metallic gray finished heavy gauge steel wall mounting brackets. Racks have been tested to 400# equipment load capacity.

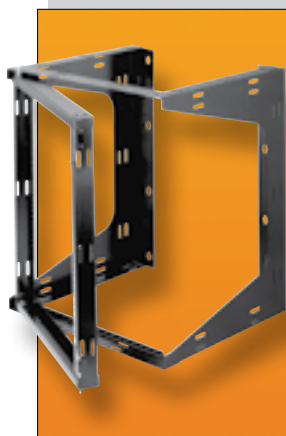
| Catalog Number | Panel Space | Depth | Weight Lbs. |
|----------------|-----------------|--------|-------------|
| WRR-2242 | 42.00" x 19.00" | 8.00" | 27 |
| WRR-2243 | 42.00" x 19.00" | 12.00" | 30 |
| WRR-2244 | 42.00" x 19.00" | 18.00" | 34 |
| WRR-2264 | 75.25" x 19.00" | 18.00" | 44 |

Includes all assembly hardware except for wall attachment fasteners.

For full dimensional information, see our Web site at www.budind.com.

OPEN RACKS

SWING FRAME



Design Features

These swingframe racks offer all the conveniences of a wall mounted rack, plus the added advantage of a swing out frame for easy access to the rear of your equipment.

- ◆ Left or right hand hinge
- ◆ #12-24 panel mounting hardware (Use #9260 screws – order separately)
- ◆ Velcro cable straps included
- ◆ 16" on center wall mounting (wall mounting hardware not included)
- ◆ 75# equipment load capacity
- ◆ Two Styles: Style A-Knockdown Assembly
Style B-Welded Assembly
- ◆ Finish: Black Texture (BT)

| Catalog Number | Style | Panel Space | Overall Height & Width | Depth | Weight Lbs. |
|----------------|-------|-----------------|------------------------|--------|-------------|
| SF-2184 | A | 21.00" x 19.00" | 24.00" x 21.25" | 18.00" | 33 |
| SF-2194 | A | 35.00" x 19.00" | 38.00" x 21.25" | 18.00" | 40 |
| SF-2283 | B | 21.00" x 19.00" | 24.00" x 21.25" | 12.00" | 24 |
| SF-2284 | B | 21.00" x 19.00" | 24.00" x 21.25" | 18.00" | 28 |
| SF-2293 | B | 35.00" x 19.00" | 38.00" x 21.25" | 12.00" | 32 |
| SF-2294 | B | 35.00" x 19.00" | 38.00" x 21.25" | 18.00" | 36 |

HEAVY DUTY STEEL RACK



Design Features

These heavy duty racks are available in 6' and 7' heights and 19" wide panel space. Panel mounting holes are #12-24 tapped on E.I.A. universal spacing. (Use #9260 screws – order separately.) Panel mounting holes are located on front flanges only. Base Angles: .25" x 3.50" x 4.87" Top Angles: .12" x 2.09" x 1.56" Uprights: .18" x 3.00" x 1.28" Overall Width: 20.37" Overall Depth: 12.75" base, 3.00" upright, 6.12" top

- ◆ Finish: Black Texture (BT)
- ◆ Racks are shipped knocked down in two (2) cartons, with all necessary assembly hardware included.

Ordering Information

| Catalog Number | Panel Space | Height | Weight Lbs. |
|----------------|-----------------|--------|-------------|
| RR-1265 | 66.50" x 19.00" | 72.25" | 64 |
| RR-1269 | 77.00" x 19.00" | 82.75" | 73 |

For full dimensional information, see our Web site at www.budind.com.

RR-1263 SERIES



Design Features

Exceptionally strong structure made up of chassis-type base and supporting angles. Uprights, .11" steel channels, 3.00" deep; top plate, 1.12" x 3.12". Rails tapped #10-32 on E.I.A. universal spacing. (Use #7346 screws - order separately) Base is 19.96" x 22.00" and drilled for RC-7758 casters. Racks have been tested to 650# equipment load capacity.

- ◆ Finish: Metallic Gray (MG) and Black Texture (BT).
- ◆ Racks are shipped knocked down in two (2) cartons, with all necessary assembly hardware included.

Ordering Information

| Catalog Number | Panel Space | Height | Weight Lbs. |
|----------------|-----------------|--------|-------------|
| RR-1263 | 31.50" x 19.00" | 35.62" | 36 |
| RR-1363 | 36.75" x 19.00" | 40.87" | 37 |
| RR-1264 | 66.50" x 19.00" | 70.62" | 46 |
| RR-1364 | 71.75" x 19.00" | 75.62" | 47 |
| RR-1366 | 77.00" x 19.00" | 81.12" | 49 |

For full dimensional information, see our Web site at www.budind.com.

RR-1367 SERIES



Design Features

Extra-sturdy racks made of 14 & 12 gauge steel. Eight-inch deep welded "U" member and triangular bracket hold uprights to base(12GA.). Panel mounting rails tapped #10-32 on E.I.A. universal spacing. (Use #7346 screws – order separately.) Chassis type base, 20.87" x 26.00", drilled for RC-7758 casters. Racks may be bolted together in Add-A-Rack fashion.

- ◆ Finish: Metallic Gray (MG) and Black Texture (BT).
- ◆ Racks are shipped knocked down in two (2) cartons, with all necessary assembly hardware included.

Ordering Information

| Catalog Number | Panel Space | Height | Width | Weight Lbs. |
|----------------|-----------------|--------|--------|-------------|
| RR-1367 | 61.25" x 19.00" | 64.62" | 20.87" | 74 |
| RR-1368 | 70.00" x 19.00" | 73.37" | 20.87" | 77 |
| RR-1369 | 77.00" x 19.00" | 80.37" | 20.87" | 81 |

For full dimensional information, see our Web site at www.budind.com.

TABLE TOP RACK



Design Features

Chassis-type base holds heavy components for table mounting applications. Supporting angles provide strength and rigidity. Panel mounting rails tapped #10-32 on E.I.A. universal spacing. (Use #7346 screws – order separately.) Standard 19" panel fits flush with front. Base, 20.37" x 12.00". Shipped knocked down.

- ◆ Finish: Metallic Gray (MG) and Black Texture (BT).

Ordering Information

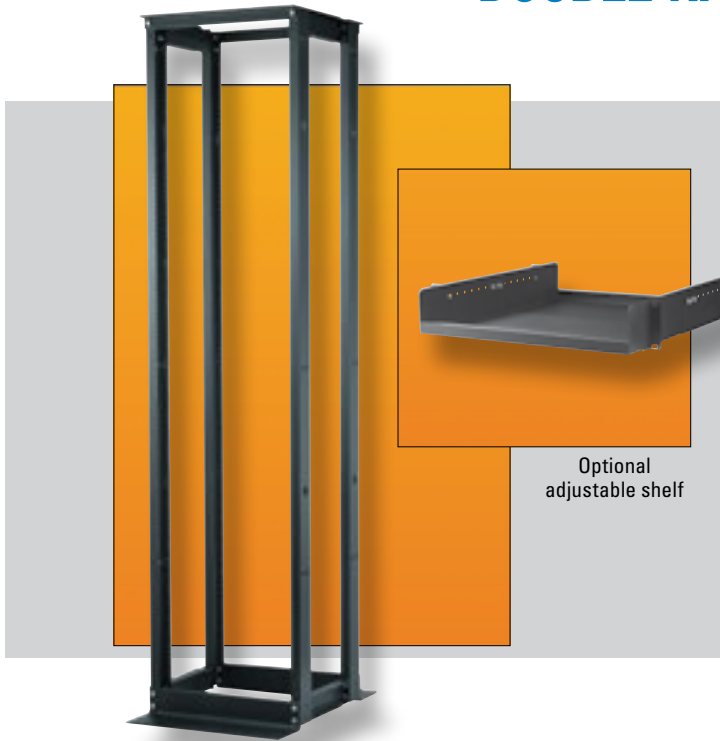
| Catalog Number | Panel Space | Height | Weight Lbs. |
|----------------|-------------|--------|-------------|
| RR-1248 | 21.00" | 24.00" | 14.25 |
| RR-1249 | 28.00" | 31.00" | 16.75 |

All products can be custom modified to your specifications.

OPEN RACKS

DOUBLE RACK

Bud's Double Racks offer the ideal solution when full, natural ventilation and a strong four-point mounting system is required, but without the need for the security offered by a full cabinet rack. Offered in the standard 84" height and in three commonly used depths.



Optional adjustable shelf

Finish

Black Textured (BT). Other finishes available upon request.

Accessories

See pages 15–27.

Design Features

- ◆ Lightweight but sturdy, aluminum and steel construction
- ◆ Standard 19" × 77" (44-U) panel space with #12-24 tapped mounting holes
- ◆ Standard 84" overall height and 20.25" overall width
- ◆ Choice of three depths of 24", 30", or 36"
- ◆ Shipped knocked down in one carton; easily assembled with one 5/8" wrench
- ◆ Sturdy, solid four-point mounting for heavy networking equipment
- ◆ Dual mounting surfaces and choices in depth provide numerous mounting possibilities
- ◆ Unique depth extenders provide for wiring ladder and/or cableway mounting
- ◆ Can be mounted to the floor for additional sturdiness and security
- ◆ Meets EIA-310 standards
- ◆ 1100# equipment load capacity

Bonus Features

- ◆ Optional Adjusting Panel Mounting Rails provide depth adjustability across full panel height
- ◆ Optional Adjusting Brackets are ideal for those one or two pieces of equipment that are shallower than others in your rack, providing mounts up to 8.00" from mounting rail
- ◆ Optional Adjustable Shelf — 200# weight load limit
- ◆ Can be joined into multiple bay configurations with optional Add-A-Rack kit
- ◆ Accepts most other standard Bud accessories

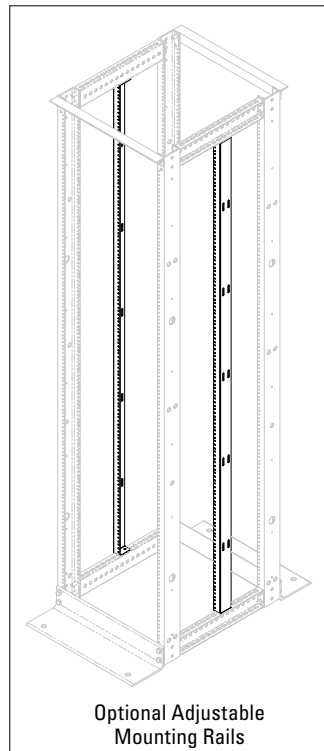
Ordering Information

| Catalog No. | Panel Space | Overall Dimensions H × W × D | Weight Lbs. |
|-------------|-----------------|---------------------------------|----------------|
| DR-8092 | 19.00" × 77.00" | 84.00" × 20.25" × 24.00" | 54 |
| DR-8093 | 19.00" × 77.00" | 84.00" × 20.25" × 30.00" | 56 |
| DR-8094 | 19.00" × 77.00" | 84.00" × 20.25" × 36.00" | 59 |

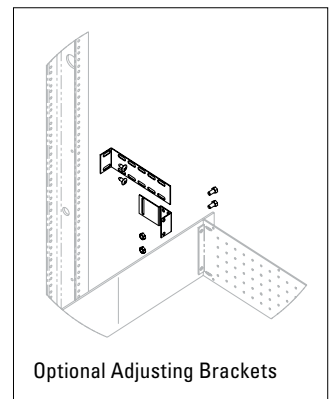
For full dimensional information, see our Web site at www.budind.com.

Optional Accessories

| Catalog No. | Description | Weight Lbs. |
|-------------|--|----------------|
| SH-8096 | Adjustable Shelf, 19.00" panel width × 3.5" (2-U) high | 18.6 |
| PMR-8088 | Adjustable Mounting Rail, 75.25" (43-U) | 13.0 |
| AB-8089 | Adjusting Brackets, 1.75" × 8.00" | 1.2 |
| HW-8097 | Add-A-Rack Hardware Kit | 0.3 |

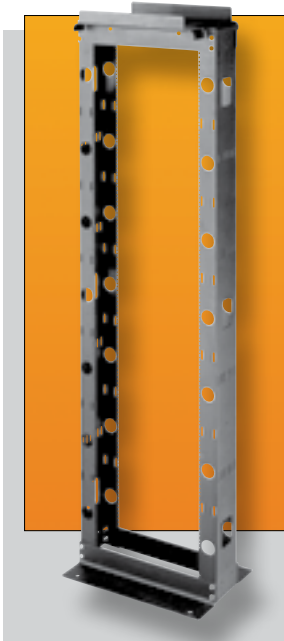


Optional Adjustable Mounting Rails



Optional Adjusting Brackets

CABLE MANAGEMENT RACK



Bud's cable management rack offers all the advantages of a standard open rack plus the additional advantages of built in vertical cable management, horizontal cable trough at top of rack, and your choice of either 19" or 23" panel space width.

Design Features

- ◆ Extra deep 3.00" x 6.50" upright rails
- ◆ 77.00" of usable panel space height
- ◆ 19.00" or 23.00" panel width
- ◆ All aluminum, bolt together, construction
- ◆ Integral vertical and horizontal cable management
- ◆ Complete with cable management clips and straps, and all necessary hardware, in one convenient carton

| C A B L E M A N A G E M E N T R A C K | | | |
|---------------------------------------|---------------------------|------------------------------------|----------------|
| Ordering Information | | | |
| Catalog Number | Panel Space | Overall Dimensions H x D x W | Weight Lbs. |
| CMR-8040 | 19.00" or 23.00" x 77.00" | 86.00" x 16.50" x 23.75" or 27.75" | 47 |

Finish
Black Texture (BT)

For full dimensional information, see our Web site at www.budind.com.

DC-8035



Bud's open rack assembly allows you to order the popular ARR-1272-BT aluminum open rack, together with Bud's efficient cable management system, all under one easy part number.

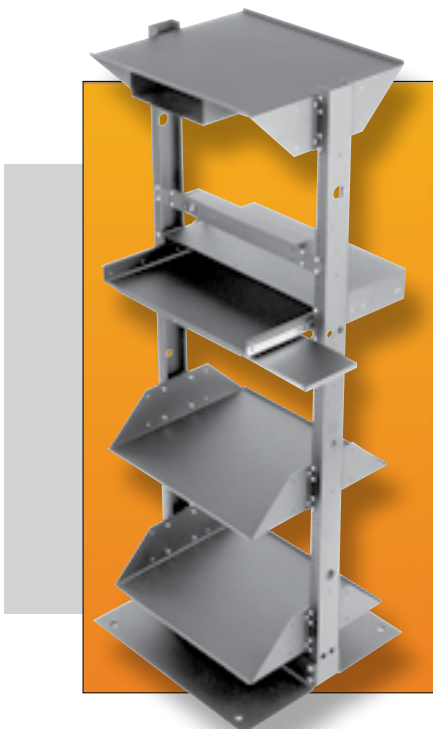
Design Features

- ◆ ARR-1272-BT Black finished aluminum rack with 19.00" x 77.00" usable panel space
- ◆ Twelve CM-1196 Cableway Rings
- ◆ One pair CM-1197 Cableway Covers
- ◆ Six CM-1220 Cable rings
- ◆ All necessary assembly hardware
- ◆ Accepts all Bud open rack accessories
- ◆ Shipped knocked down in one carton

| O P E N R A C K A S S E M B L Y | | | |
|---------------------------------|-----------------|---------------------|----------------|
| Ordering Information | | | |
| Catalog Number | Panel Space | Overall Dimensions | Weight Lbs. |
| DC-8035 | 19.00" x 77.00" | 26.25" W x 84.00" H | 49 |

For full dimensional information, see our Web site at www.budind.com.

SERVER RACK ASSEMBLY



Bud's server rack assembly is the ideal framework for organizing your networking components. Comes complete with 23" panel width network frame, monitor shelf with switchbox compartment, power outlet strip, sliding keyboard shelf with mouse pad, and two heavy duty equipment shelves. All components are fully adjustable to your particular requirements.

Features

Shipped knocked down in one carton

Finish

Black Texture (BT)

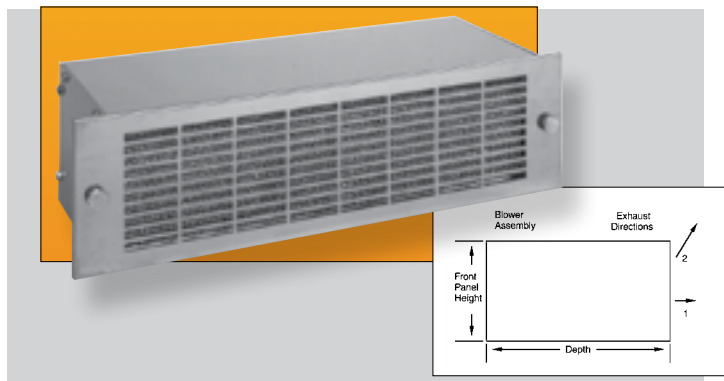
| S E R V E R R A C K A S S E M B L Y | | |
|-------------------------------------|---------------------------------|----------------|
| Ordering Information | | |
| Catalog Number | Overall Dimensions W x H x D | Weight Lbs. |
| CSR-8060 | 24.25" x 66.50" x 23.00" | 100 |

For full dimensional information, see our Web site at www.budind.com.

See our online rack and accessory selector guide at www.budind.com/rackguide.html

All products can be custom modified to your specifications.

FANS & BLOWERS



Design Features

All blowers are 19" panel width with standard E.I.A. notching for rack mounting. Motors are U.L. and CSA approved for 115 VAC 50/60 Hz.

| BLOWER MODEL NUMBERS | | |
|--|--------|---------|
| Features | B-60 | B-62 |
| Panel Height | 3.50" | 5.25" |
| Overall Depth | 10.50" | 7.69" |
| Motor | | |
| Bearings | Ball | Ball |
| Watts | 90 | 95 |
| RPM | 1500 | 3000 |
| Run Amps | 1.2 | 1.4 |
| L.R. Amps | 1.6 | 1.9 |
| Air CFM | 160 | 300 |
| Exhaust | 2 | 2 |
| Noise Level | 53* | 58* |
| Power Cord | | |
| Length In. | 36.00" | 36.00" |
| No. Wires | 3 | 3 |
| Weight Lbs. | 18 | 13 |
| Permanent Filter | | |
| Part Number | BF-61 | BF-63 |
| Height | 3.06" | 4.81" |
| Weight | 2 oz. | 2.5 oz. |
| FR-68 Filter Reconditioner. Apply to washed filter to restore full original filtering capacity 12.8 oz. | | |
| * DBA Includes molded-on plug | | |

FN-1282 10" EXHAUST FAN

Fan mounts in the top of ventilated Economizer racks. Supplied with finger guard and all mounting hardware. 36" power cord supplied. Standard UL/CSA rated with 535 CFM air flow. Weight: 5.3 lbs. Heatsinking aluminum housing with high strength UL94V-0 thermoplastic impeller. Shaded-pole, thermally protected, ball bearing motor draws .70/.78 amps at 115 VAC. Operating temperature range: -20 to +60 degrees Celsius. Noise level: 55 dBA.



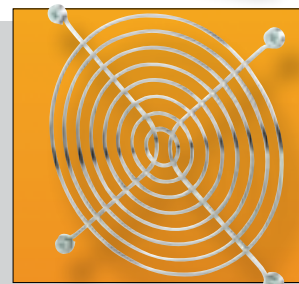
FN-1280 FAN

Fan mounts in FT-1170 Fan Tray or can be used individually in other applications. Supplied with one hardware cloth finger guard. UL approved. Specifications 110 Volt AC, .21 AMPs, 105CFM, -20°C to +60°C temperature range, weight 1.3 lbs. Noise level: 46 dBA.



FG-1281 FINGER GUARD

Used with FN-1280 fan. Zinc plated steel wire form. Mounting hardware supplied. Weight 2 oz.



FC-1283 FAN CORD

Used with FN-1280 fan in individual applications, or as a replacement cord for FN-1282 fan. 36" long, two conductor, 18GA., SPT-1 cable with molded on right angle fan plug and AC plug. Weight 1.7 oz.

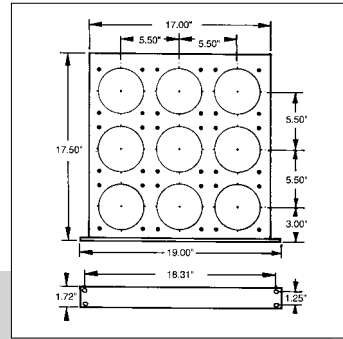


FAN TRAY ASSEMBLIES

FAN TRAY ASSEMBLY

FT-1170 FAN TRAY ASSEMBLY

Includes 9-position fan tray with preassembled front panel; a 9-outlet daisy chain cord and 6-foot power cord and adjustable support angles. Material: Fan Tray & Support Angles, 16-gauge steel; Front Panel, 12-gauge steel. Finish: Fan Tray, Front Panel, White Texture (WH) or Metallic Gray (MG). Weight 11 lbs. Order FN-1280 Fans and FG-1281 Finger Guards as required for your application.



COMPLETED FAN TRAY ASSEMBLIES

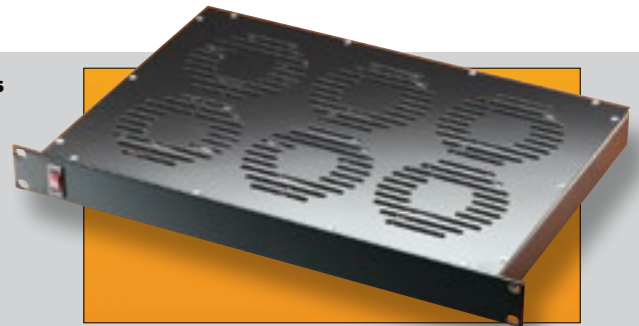
Fan Tray Assemblies that are completely assembled requiring only that you position them in place and plug them in. Available in 3, 6, or 9 fan versions to meet most applications.

Finish

Smooth Black

Design Features

- ◆ Standard EIA 19" panel width and 1-U (1.75") high
- ◆ Illuminated on/off switch conveniently located on the front panel
- ◆ 115VAC, 60Hz operation
- ◆ Additional support brackets included with 6 and 9 fan versions
- ◆ 7ft. long power cord



Environmental conditions affect fan tray performance. Testing is recommended.

| Catalog Number | Number of Fans | Overall Size W x D x H | Est. Weight Lbs. |
|----------------|----------------|-------------------------|------------------|
| FT-1973 | 3 | 19.00" x 7.00" x 1.75" | 11 |
| FT-1976 | 6 | 19.00" x 12.00" x 1.75" | 21 |
| FT-1979 | 9 | 19.00" x 17.25" x 1.75" | 31 |

For full dimensional information, see our Web site at www.budind.com.

FAN TRAY ASSEMBLY

WITH DIGITAL TEMPERATURE CONTROLLER

Fan Tray Assembly is completely assembled with fans and ready to use. Supplied with a unique digital temperature controller. Just position it in place, plug it in and set the desired temperature setting on the digital controller. Provides 540 total CFM.

Finish

Black textured powder coating



Design Features

- ◆ Standard EIA 19" panel width with mounting brackets and 1-U (1.75") high.
- ◆ Illuminated on/off switch conveniently located on the front panel.
- ◆ 110VAC, 60Hz operation.
- ◆ CE listed fans with long life sleeve bearing.
- ◆ Supplied with two rack mounting brackets — shipped unassembled.
- ◆ Detachable 5 ft. long power cord.
- ◆ Digital temperature controller range: 0°–50°C (32°–122°F).
- ◆ Digital temperature controller accuracy: ±1°C (±2°F).
- ◆ Easily locatable temperature sensor with 9 ft. long cable.

| Catalog Number | Number of Fans | Overall Size H x W x D | Est. Weight Lbs. |
|----------------|----------------|------------------------|------------------|
| FT-1986 | 6 | 1.75" x 19" x 18.56" | N/A |

TEM-STAT TEMPERATURE CONTROLS

Prevent shut-downs caused by over-heating of electronic or electrical equipment in enclosures. Units react quickly to gradual or sudden temperature changes. Can also be used for temperature control in convection and radiant heating applications. UL and CSA listed. Weight: 2.0 oz.



| Catalog Number | Range | Accuracy | Contacts: Normally open, close on temperature rise Contacts re-open after | Mounting | UL Electrical Ratings | | | | | |
|----------------|-----------|----------|--|----------|---|---------|------|--|---------|------|
| | | | | | Service Life 100,000 cycles (Full Load) | | | Service Life 30,000 cycles (Full Load) | | |
| | | | | | 120 VAC | 240 VAC | DC | 120 VAC | 240 VAC | DC |
| TS-15 | 80°-170°F | ±8°F | 10°±5°F drop | Flush | 4 Amps | 2 Amps | — | 6 Amps | 3 Amps | — |
| TS-15-A* | 80°-170°F | ±8°F | 10°±5°F drop | Flush | 15 Amps | — | — | 15 Amps | 10 Amps | — |
| TS-16 | 32°-140°F | ±7°F | 12.5°±7°F drop | DIN | 15 Amps | 10 Amps | 30 W | 15 Amps | 10 Amps | 30 W |

ACCESSORIES

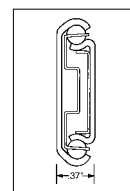
SLIDING MECHANISMS

Each of these zinc plated, alloy steel telescoping and linear motion mechanisms consists of an outer member, inner member, ball retainer, and ball bearings. All types offer a smooth, precise telescoping movement with long service life. Requires two pairs of panel mounting rails per cabinet rack.



| Catalog No. | Slide Length | Travel | Load Rating* (Lbs.) | Ship Weight (Lbs.) | RECOMMENDED SLIDE MOUNTING BRACKET KIT | |
|-------------|--------------|--------|------------------------|-----------------------|---|-------------|
| | | | | | Universal Kit | Economy Kit |
| AS-5000-A | 12.00" | 8.00" | 140 | 1.3 | BAS-5106 Max. chassis width 2.00" less than rack panel width | BAS-5107 |
| AS-5001-A | 16.00" | 12.00" | 120 | 1.7 | | |
| AS-5002-A | 20.00" | 15.00" | 92 | 2.3 | | |
| AS-5004-A | 26.00" | 19.00" | 70 | 2.9 | | |

* Load rating shown in table is "per pair".

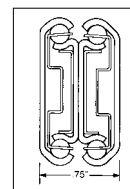


Two-piece slide with stationary delrin guides for stabilization in closed position. 3/4 extension, front disconnect, positive stop.



| Catalog No. | Slide Length | Travel | Load Rating* (Lbs.) | Ship Weight (Lbs.) | RECOMMENDED SLIDE MOUNTING BRACKET KIT | | |
|-------------|--------------|--------|------------------------|-----------------------|---|-------------|---|
| | | | | | Universal Kit | Economy Kit | Recessed Kit |
| AS-5042-A | 20.00" | 20.87" | 91 | 4.2 | BAS-5106 Max. chassis width 2.75" less than rack panel width | BAS-5107 | BAS-5108 Max. chassis width 2.00" less than rack panel width |

* Load rating shown in table is "per pair".



Three-piece slide full extension, front disconnect, positive stop.

For full dimensional information, see our Web site at www.budind.com.

ACCESSORIES

SLIDE MOUNTING BRACKET KITS

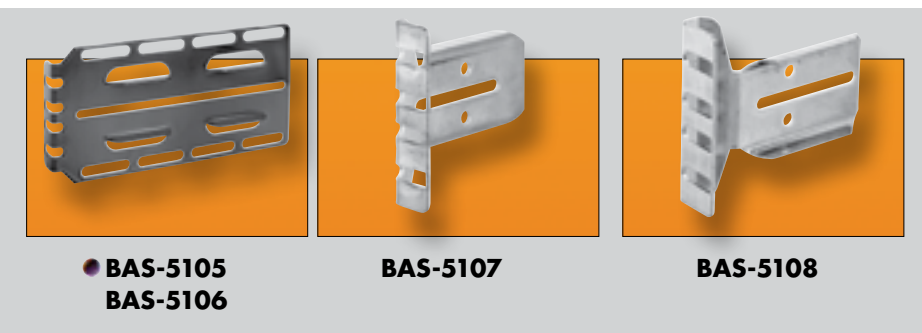
The **BAS-5105** Mounting Bracket Kit is similar to the BAS-5106 kit except that it is modified to allow slide-mounted accessories to fit Budrack Professional and Server Rack Professional Series cabinet racks. Weight 2 Lbs.

The **BAS-5106** Universal Mounting Bracket Kit is recommended for both two-piece and three-piece slides subject to maximum chassis width as shown above. It is easier to assemble allowing slides to be mounted to either panel mounting surface or accessory flange of panel mounting rails. Weight 2 Lbs.

The **BAS-5107** Economy Mounting Bracket Kit is recommended for a more economical approach to mounting a two-piece or three-piece slide to the front flange of panel mounting rails. Weight 1 Lb.

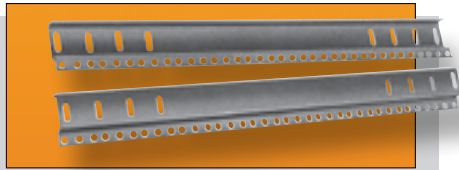
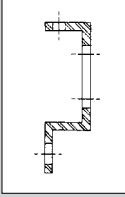
The **BAS-5108** Recessed Mounting Bracket Kit is recommended for a three-piece slide only when the chassis width is 2.00" less than rack panel width. Weight 2 Lbs.

All kits include necessary mounting brackets and hardware to install one pair of slides.



ACCESSORIES

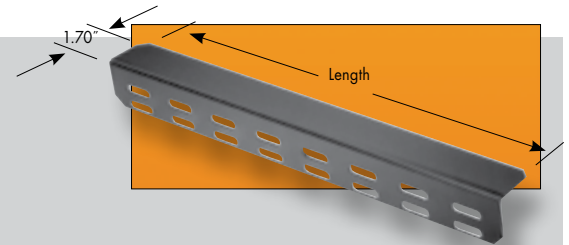
Standard Panel Mounting Rails



Use on Bud Cabinet Racks: Series 60, Series 2000, ValuRack, Classic II and Economizer. 12 Gauge Steel. Sold in pairs. Rail mounting hardware included. (Uses #7346 equipment mounting screws - order separately) Finish: Black

| Catalog No. | Fits Cabinet Rack w/Panel Space | Weight (Lbs.) | Catalog No. | Fits Cabinet Rack w/Panel Space | Weight (Lbs.) |
|-------------|---------------------------------|---------------|-------------|---------------------------------|---------------|
| PMR-9448 | 21.00" | 4 | PMR-9451 | 52.50" | 10 |
| PMR-2331 | 24.50" | 4.75 | PMR-9452 | 61.25" | 11 |
| PMR-9449 | 31.50" | 6 | PMR-9453 | 70.00" | 12 |
| PMR-9450 | 42.00" | 8 | PMR-9454 | 78.75" | 14 |

Chassis Support Brackets

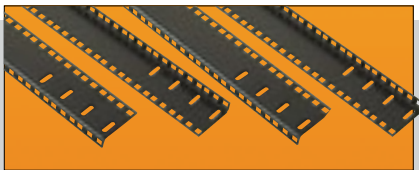


Attaches to panel mounting rail accessory flange, heavy duty 14 ga. steel. Finish: Black. Sold in pairs. Requires two pairs of panel mounting rails per cabinet rack.

| Catalog Number | Length | Weight (Lbs.) |
|----------------|--------|---------------|
| CSB-1352 | 13.00" | 1.75 |
| CSB-1353 | 16.00" | 2.25 |
| CSB-1354 | 23.00" | 3.25 |
| CSB-1355 | 28.00" | 3.75 |
| CSB-8180 | 33.00" | 4.75 |
| CSB-8181 | 41.00" | 5.50 |

L-Shaped Panel Mounting Rails

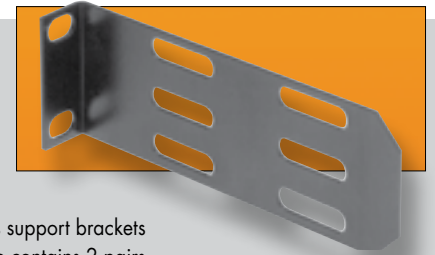
Use on Bud Cabinet racks: Series 60, Series 2000, ValuRack, Classic II, and Economizer when accessory flange on standard rails interferes with equipment installation. E.I.A. spaced equipment mounting holes accepts either #12-24 (Bud #307) or M6 (Bud #851-DLH) cage nuts - order separately. Four rails per package. Rail mounting hardware included. Finish: Black



| Catalog No. | Fits Cabinet rack w/panel space | Wgt. Lbs. |
|-------------|---------------------------------|-----------|
| PMR-9483 | 70.00" | 24 |
| PMR-9484 | 78.75" | 28 |

Open Rack Adapter Bracket

5" long brackets adapt chassis support brackets for use on open rack. Package contains 2 pairs.



| Catalog No. | Est. Weight (Lbs.) |
|-------------|--------------------|
| CSB-1351 | 1 |

Cable Management Straps

Velcro cable straps in two styles. Comes in packages of 25 straps. Color: Black



| Catalog No. | Style | Size (W x L) | Wgt. Oz. |
|-------------|-------|----------------|----------|
| CMS-2208-B | A | 1.00" x 8.00" | 3.4 |
| CMS-2212-B | A | 1.00" x 12.00" | 5.0 |
| CMS-2218-B | B | .75" x 18.00" | 4.6 |

Cable Management Bracket Sets

Heavy gauge steel bracket mounts in any direction with one screw mounting. Package contains six brackets, six 12" Velcro cable straps and all mounting hardware. Finish: Black



| Catalog No. | Size | Wgt. Lbs. |
|-------------|-----------------------|-----------|
| CM-2200 | 1.00" x 1.50" x 3.00" | 1.0 |

Cable Management Panels

Heavy gauge steel panels occupy I-U (1.75") of panel space height, and are available for both 19" and 23" panel widths. Comes complete with 8" Velcro cable straps and all mounting hardware. Finish: Black



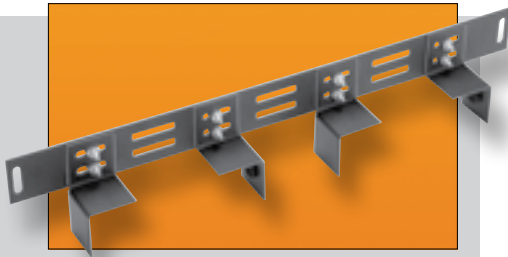
| Catalog No. | Panel Width | No. of Straps | Wgt. Lbs. |
|-------------|-------------|---------------|-----------|
| CM-2201 | 19.00" | 4 | 1.0 |
| CM-2202 | 23.00" | 5 | 1.1 |

See our online rack and accessory selector guide at www.budind.com/rackguide.html

All products can be custom modified to your specifications.

For full dimensional information, see our Web site at www.budind.com.

Equipment Tie Down Bracket



Heavy gauge steel bracket, in 19" panel width, will secure your equipment within open or enclosed cabinet racks. Front panels are 1-U (1.75") high. Finishes: Black Texture (BT) or Metallic Gray (MG) Includes all mounting hardware

| Catalog No. | Panel Width | Weight Lbs. |
|-------------|-------------|-------------|
| EB-1781 | 19.00" | 1.1 |

Panel Extender



Heavy gauge steel brackets extend panels 5.00" beyond normal panel mounting rails. Panel mounting holes on E.I.A. universal spacing. Finish: Black. Sold in pairs. Includes all mounting hardware.

| Catalog No. | Panel Height | Est. Weight Lbs. |
|-------------|--------------|------------------|
| PE-1600 | 3.50" | 1 |
| PE-1601 | 5.25" | 2 |
| PE-1602 | 7.00" | 2 |

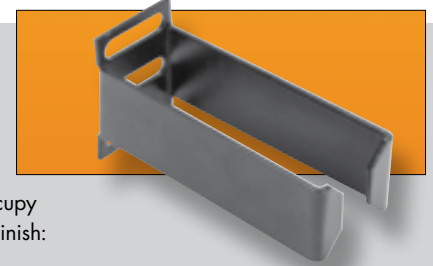
Cableway Ring



Mounts to side of open rack to provide vertical cableway. Can be used between two adjacent racks. Heavy gauge steel Available in two depths. Finish: Black. Includes all mounting hardware.

| Catalog No. | Size (W x D) | Est. Weight Lbs. |
|-------------|---------------|------------------|
| CM-1195 | 3.00" x 4.00" | 1 |
| CM-1196 | 3.00" x 6.00" | 1 |

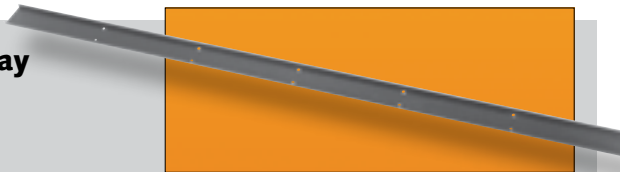
Cable Rings



Heavy gauge steel rings occupy 1-U (1.75") of panel space. Finish: Black. Includes all mounting hardware.

| Catalog No. | Size (W x D) | Est. Weight Lbs. |
|-------------|---------------|------------------|
| CM-1220 | 1.25" x 3.50" | 1 |
| CM-1221 | 3.00" x 3.50" | 1 |

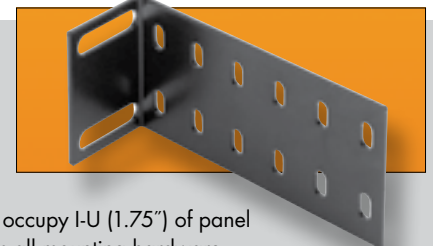
Cableway Cover



Formed steel covers mount to the front and rear of cableway rings to protect cables and present a finished look to your cabling installation. Finish: Black. Used on 7' tall open racks. Sold in pairs. Includes all mounting hardware.

| Catalog No. | Size (W x D) | Est. Weight Lbs. |
|-------------|----------------|------------------|
| CM-1197 | 3.00" x 83.00" | 10 |

Cable Bracket



Heavy gauge steel brackets occupy 1-U (1.75") of panel space. Finish: Black. Includes all mounting hardware.

| Catalog No. | Size (W x D) | Est. Weight Lbs. |
|-------------|---------------|------------------|
| CM-1223 | 1.75" x 3.50" | 1 |

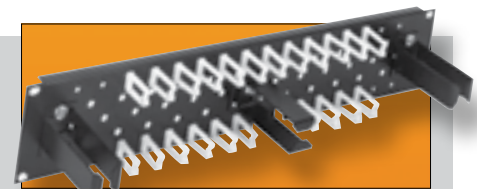
Cable Management Panel



Designed for 19" panel width racks. Heavy 18 gauge formed steel panel, with twelve plastic cable clips. Finish: Black. Includes all mounting hardware. Accessories: Additional plastic cable clips catalog No. CM-1229. Twelve clips per package.

| Catalog No. | Size (H x W) | Est. Weight Lbs. |
|-------------|----------------|------------------|
| CM-1225 | 1.75" x 19.00" | 1 |

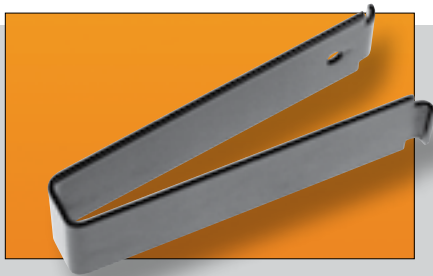
Cable Management Panel



Designed for 19" panel width racks. Heavy 18 gauge formed steel panel with twenty-four plastic cable clips and three CM-1220 cable rings. Finish: Black. Includes all mounting hardware. Accessories: Additional plastic cable clips catalog No. CM-1229. Twelve clips per package.

| Catalog No. | Size (H x W) | Est. Weight Lbs. |
|-------------|----------------|------------------|
| CM-1227 | 3.50" x 19.00" | 3 |

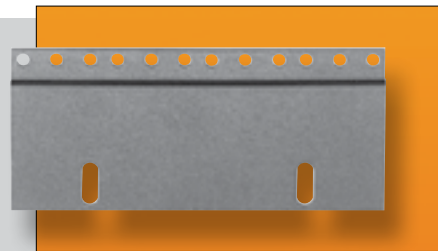
Cable Management Clips



Snap-in spring steel cable clips available in two sizes. In packages of 3 clips. Finish: Black

| Catalog No. | Size (W x D) | Weight Lbs. |
|-------------|---------------|-------------|
| CM-2220 | .56" x 3.75" | .5 |
| CM-2221 | 1.62" x 2.50" | .4 |

Adapter Mounting Brackets



16-gauge steel brackets used for mounting 19" wide equipment into open racks with 23" and 24" wide panel spaces and enclosed cabinet racks with 24" wide panel spaces. Mounting hole locations conform to E.I.A. specs. Finish is Black Texture (BT). Comes complete with all mounting hardware. Brackets are packaged in pairs.

| Catalog No. | Panel Height | Weight Oz. |
|-------------|--------------|------------|
| AB-1851 | 1.75" | 3 |
| AB-1852 | 3.50" | 6 |

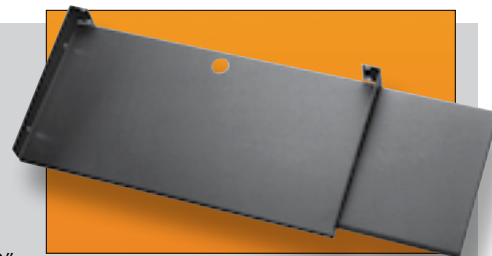
Cable Carrier



Allows for the organization and protection of cables on slide-mounted equipment. Mounts to panel mounting rail at rear of cabinet rack, and can be used on both the left and right sides of the cabinet. Wide support arms allow for the use of either ribbon cable or bundled wire cables. Carrier requires .88" clearance at the rear of cabinet when closed. Permits up to 30" of chassis extension.

| Catalog No. | Size | Est. Weight Lbs. |
|-------------|-------------|------------------|
| CC-5190 | 3.50" (2-U) | 4 |
| CC-5191 | 1.75" (1-U) | 2 |

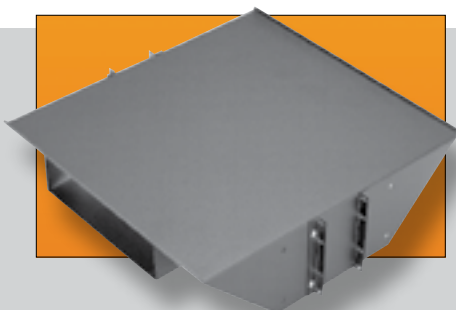
Stationary Keyboard/Mouse Shelf



Heavy gauge steel shelf mounts to any 19" panel width open rack. Comes with 9.00" x 7.00" mouse tray that can be bolted on to either the left or right hand side of the shelf. Takes up 1-U (1.75") of panel space. Finish: Black Texture (BT) or Metallic Gray (MG) Includes all mounting hardware

| Catalog No. | Panel Width | Max. Keyboard Width | Weight Lbs. |
|-------------|-------------|---------------------|-------------|
| SA-1775 | 19.00" | 20.00" | 6.3 |

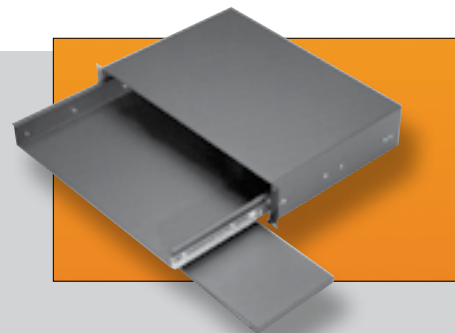
Open Rack Monitor Shelf



19.00" deep heavy gauge steel shelf mounts to any 19" or 23" panel width open rack. Includes 4.00" high x 10.50" wide integrated switch box compartment. Supports 200 Lbs. Finish: Black Texture (BT) or Metallic Gray (MG) Includes all mounting hardware

| Catalog No. | Panel Width | Weight Lbs. |
|-------------|-------------|-------------|
| SA-1796 | 19.00" | 12.3 |
| SA-1798 | 23.00" | 13.7 |

Sliding Keyboard/Mouse Shelf



Sliding keyboard shelf fits 19" and 23" panel width racks. Mouse pad slides out from underneath the shelf in either the right or left side. Takes up 2-U (3.50") of panel space. Overall depth: 12.50". Finish: Black Texture (BT) or Metallic Gray (MG) Includes all mounting hardware

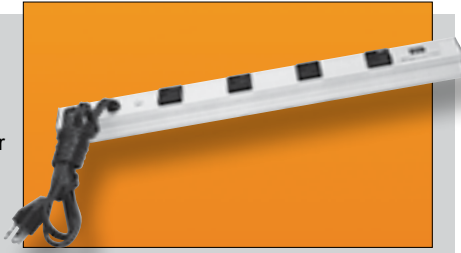
| Catalog No. | Panel Width | Max. Keyboard Width | Weight Lbs. |
|-------------|-------------|---------------------|-------------|
| KS-1785 | 19.00" | 16.00" | 13.4 |
| KS-1787 | 23.00" | 20.50" | 15.1 |

See our online rack and accessory selector guide at www.budind.com/rackguide.html

All products can be custom modified to your specifications.

Power Outlet Strips

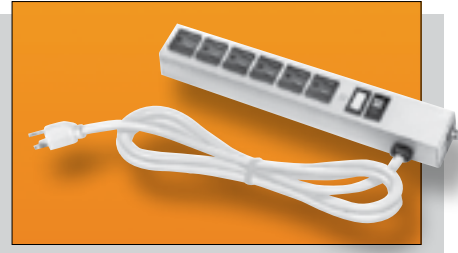
Power outlet strips can be used in cabinets, on walls or along work or test benches. Silver gray housings; no loose wires can come into contact with conductor wires. Strips snap into adjustable mounting clips. Grounding type 15 amp., 125 volt receptacles, 15 amp thermal-type circuit breaker with reset. 14 gauge, 3 wire, 6 foot power cord. All components U.L. approved.



| Catalog No. | No. of Outlets | Length | Weight Lbs. |
|-------------|----------------|--------|-------------|
| POS-4 | 4 | 17.50" | 2.00 |
| POS-6 | 6 | 12.25" | 1.75 |
| POS-7 | 7 | 48.00" | 3.50 |
| POS-9 | 9 | 60.00" | 4.25 |
| POS-11 | 11 | 72.00" | 4.75 |

Surge Suppressed Power Outlet Strips

Provides protection to data or word processing equipment and other sensitive electrical equipment from sudden "spikes" or high energy voltage. Prevents equipment damage, lost or distorted data. Maximum surge current is 13000 amps, response time is < 5ns., 15 amp thermal type circuit breaker with reset. 14 gauge, 3 wire, 6 foot power cord, all components U.L. approved.



| Catalog No. | No. of Outlets | Length | Weight Lbs. |
|-------------|----------------|--------|-------------|
| POS-4-S | 4 | 17.50" | 2.00 |
| POS-66 | 6 | 12.25" | 1.75 |
| POS-7-S | 7 | 48.00" | 3.50 |
| POS-9-S | 9 | 60.00" | 4.25 |
| POS-11-S | 11 | 72.00" | 4.75 |

Rackmount Power Outlet Strips-15AMP

Designed for 19" panel space open and enclosed racks. These units are easily installed to the panel mounting surface of the racks. They provide instant power distribution from either the front or rear of the unit, and are offered in 8 outlet versions.



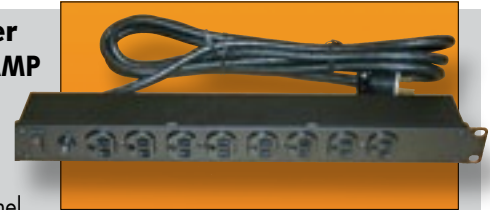
- Features:
- 15 foot black 14/3 SJT power cord.
 - 15 AMP, 125 volt ratings.
 - Circuit Breaker and illuminated on/off switch on front panel.
 - 1.75" high x 3.79" deep x 19.00" wide panel space.
 - Meets UL 1363 and UL 1449 U.S. specifications.



| Catalog No. | No. of Outlets | Outlet Location | Surge Protected | UL Surge Rating | Wgt. Lbs. |
|-------------|----------------|-----------------|-----------------|-----------------|-----------|
| POS-194-S | 8 | Rear | Yes | 330V | 3.75 |
| POS-195-S | 8 | Front | Yes | 330V | 3.75 |

Rackmount Power Outlet Strips-20AMP

Designed for 19" panel space open and enclosed racks. Units are easily installed to panel mounting surfaces. They provide instant power distribution from the front of the unit, and are available with one 8 outlet 20 AMP circuit.

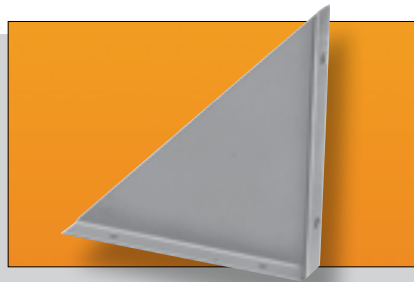


- Features:
- 15 foot black 12/3 SJT power cord with either a standard non-locking or a UL rated locking 3 contact plug, for each circuit.
 - 20 AMP, 125 volt circuit ratings.
 - Circuit Breaker and neon light on front panel for each circuit.
 - 1.75" high x 2.37" deep x 19.00" wide panel space.
 - Meets UL 1363 specifications.



| Catalog No. | No. of Circuits | No. of Outlets/Circuits | Outlet Location | Type of Plug | Wgt. Lbs. |
|-------------|-----------------|-------------------------|-----------------|--------------|-----------|
| POS-201 | 1 | 8 | Front | Non-locking | 5 |
| POS-202 | 1 | 8 | Front | Locking | 5 |

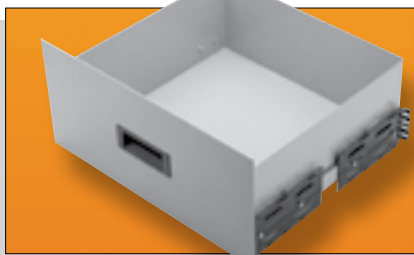
Triangular Mounting Brackets



Heavy gauge steel; .75" flanges support chassis. Sold in pairs.

| Catalog No. | Height | Depth | Weight Lbs. |
|-------------|--------|-------|-------------|
| MB-1266 | 5.00" | 5.00" | .50 |
| MB-1267 | 7.00" | 7.00" | 1.00 |
| MB-1268 | 9.00" | 9.00" | 1.50 |

Sliding Drawer



Fit cabinets with 19" panel width. Front panel height, 8.75". Supports heavy loads even when fully extended. Requires two pairs of panel mounting rails per cabinet rack. Panel Finishes: White Texture (WH), Metallic Gray (MG) and Black Texture (BT).

| Catalog No. | Size Inside | Wgt. Load Lbs. | Weight Lbs. |
|-------------|-------------------------|----------------|-------------|
| D-1722 | 16.56" x 6.31" x 16.18" | 120 | 23 |
| D-1723 | 16.56" x 6.31" x 19.18" | 92 | 24 |

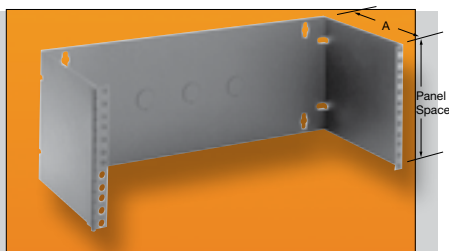
Desktop Drawer



Front panel height, 3.50". Hinged drawer top has plastic laminate bonded to aluminum. Requires two pairs of panel mounting rails per cabinet rack. Supports 92 Lbs. Panel Finishes: White Texture (WH), Black Texture (BT) and Metallic Gray (MG)

| Catalog No. | Size Inside | Weight Lbs. |
|-------------|-------------------------|-------------|
| DD-2363 | 16.87" x 13.87" x 3.00" | 23 |

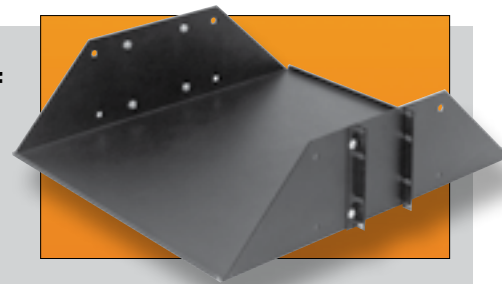
Hinged Patch Panel Bracket



These wall or rack mounted brackets accommodate all popular patch panel sizes and allow ready access to the rear of the panel. Features: Wall or 19" rack mountable. Heavy duty 16-gauge steel construction. Welded-on heavy duty hinge. Finish: Black Texture (BT). E.I.A. spaced panel mounting holes. Three cable access knockouts in back panel.

| Catalog No. A = 5.00" | Catalog No. A = 8.00" | Panel | Weight Lbs. |
|-----------------------|-----------------------|-------|-------------|
| HWB-1790 | | 3.50" | 3 |
| HWB-1792 | HWB-2792 | 7.00" | 5 |

Heavy Duty Open Rack Shelf



Center mounted shelf mounts between the upright rails of all standard 19" panel width open racks. Offered in ventilated and non-ventilated versions, shelf is 19.00" deep and 5.25" high. Rugged 16-gauge steel construction. Supports 200 Lbs. Finishes: Black Texture (BT) or Metallic Gray (MG)

| Catalog No. | Panel Width | Version | Wgt. Lbs. |
|-------------|-------------|----------------|-----------|
| SA-1765 | 19.00" | Non-Ventilated | 7 |
| SA-1766 | 19.00" | Ventilated | 7 |

Economizer Desktop

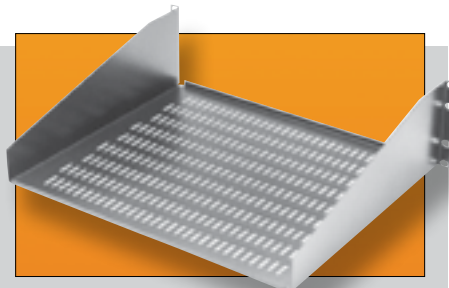


Supports 200 pounds. Easy to install: Just bolt pre-slotted, adjustable support channels to cabinet rack's mounting rails. Fits all cabinet depths. 18.00" deep, plastic laminated top. Requires two pairs of panel mounting rails per cabinet rack.

Finish: Antique White

| 19" Panel Space Cabinets | | | |
|--------------------------|-------------|--------|-------------|
| Catalog No. | Application | Width | Weight Lbs. |
| DT-17400 | 1-BAY | 22.00" | 19.25 |

Equipment Shelf-Open Rack

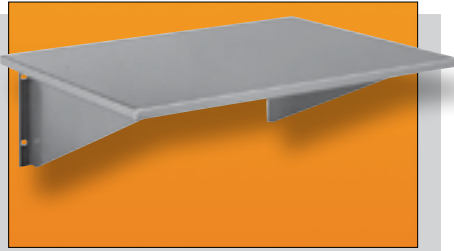


Open rack shelves fit 19" wide panel spaces and 5.25" panel height. Shelves are one-piece, 16 gauge steel and are flanged for added support. They are offered in non-ventilated and ventilated versions, and include all mounting hardware. Supports 150 Lbs. Finishes: Metallic Gray (MG), Black Texture (BT)

| Catalog No. | Type | Width | Depth | Est. Wgt. Lbs. |
|-------------|----------------|--------|--------|----------------|
| SA-1748 | Non-Ventilated | 17.62" | 10.00" | 5.5 |
| SA-1749 | Ventilated | 17.62" | 10.00" | 5.5 |
| SA-1750 | Non-Ventilated | 17.62" | 15.00" | 8 |
| SA-1751 | Ventilated | 17.62" | 15.00" | 8 |
| SA-1752 | Non-Ventilated | 17.62" | 20.00" | 10.5 |
| SA-1753 | Ventilated | 17.62" | 20.00" | 10.5 |

ACCESSORIES

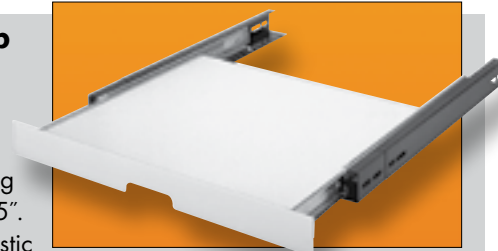
Shelf Assembly



May be attached over panel or direct to panel or direct to panel mounting rails. Overall height 7.00". Hardware furnished. Finishes: Gray Texture (GT) and Royal Blue texture (RB).

| Catalog No. | Depth | Width | Wgt. Lbs. |
|-------------|--------|--------|-----------|
| SA-1719 | 16.00" | 22.00" | 13.25 |
| SA-1720 | 20.00" | 22.00" | 15.25 |

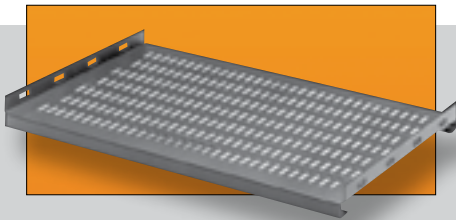
Sliding Desktop



Requires only 1.75" panel space. Working area, 12.00" x 15.75". Supports 50 lbs., plastic laminate surface. Ball-bearing slide mechanism. Locks in open position. Panel Finishes: White Texture (WH), Metallic Gray (MG) and Black Texture (BT); Top surface is antique white. Requires two pairs of panel mounting rails per cabinet rack.

| Catalog No. | Surface Area | | Panel | Wgt. Lbs. |
|-------------|--------------|--------|----------------|-----------|
| | Width | Depth | | |
| 60-2361 | 15.75" | 15.37" | 19.00" x 1.75" | 11.00 |

Stationary Shelves Ventilated

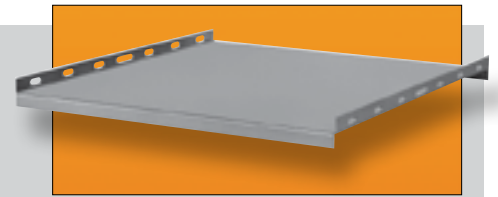


Stationary shelves, available in ventilated and non-ventilated versions, fit 19" and 24" wide panel spaces and all cabinet rack depths. Shelves are one-piece, 16-gauge steel with flanged front and rear to support up to 200 lbs. All shelves come with necessary mounting hardware. Additional brackets are furnished to allow flexibility in mounting. Shelves allow sufficient room in rear for cables and power outlet strips. Requires two pairs of panel mounting rails per cabinet rack. Finish: Smooth Black

Ventilated

| Catalog No. | CABINET RACKS | | SHELVES | | Approx. Wgt. Lbs. |
|-------------|---------------|-------------------------|---------|--------|-------------------|
| | Panel Width | Max. Clear Inside Depth | Width | Depth | |
| SH-2383 | 19.00" | 17.00" | 17.90" | 14.25" | 6 |
| SH-2384 | 19.00" | 20.50" | 17.90" | 17.75" | 7 |
| SH-2385 | 19.00" | 24.00" | 17.90" | 21.25" | 8.25 |
| SH-2386 | 19.00" | 29.25" | 17.90" | 26.50" | 9 |
| SH-2483 | 24.00" | 17.00" | 22.90" | 14.25" | 7.5 |
| SH-2484 | 24.00" | 20.50" | 22.90" | 17.75" | 8.25 |
| SH-2485 | 24.00" | 24.00" | 22.90" | 21.25" | 10.25 |
| SH-2486 | 24.00" | 29.25" | 22.90" | 26.50" | 11.25 |

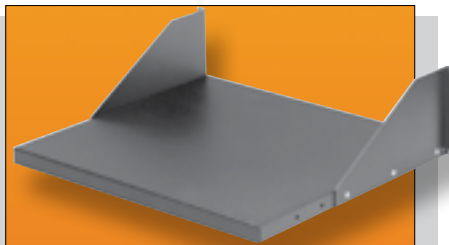
Stationary Shelves Non-Ventilated



Non-Ventilated

| Catalog No. | CABINET RACKS | | SHELVES | | Approx. Wgt. Lbs. |
|-------------|---------------|-------------------------|---------|--------|-------------------|
| | Panel Width | Max. Clear Inside Depth | Width | Depth | |
| SH-2379 | 19.00" | 17.00" | 17.90" | 14.25" | 7 |
| 60-2380 | 19.00" | 20.50" | 17.90" | 19.25" | 7.5 |
| 60-2381 | 19.00" | 24.00" | 17.90" | 22.75" | 8.5 |
| SH-2382 | 19.00" | 29.25" | 17.90" | 26.50" | 10.75 |
| SH-2479 | 24.00" | 17.00" | 22.90" | 14.25" | 8.5 |
| SH-2480 | 24.00" | 20.50" | 22.90" | 17.75" | 9.75 |
| SH-2481 | 24.00" | 24.00" | 22.90" | 21.25" | 12 |
| SH-2482 | 24.00" | 29.25" | 22.90" | 26.50" | 13.5 |

Adjustable Shelf-Open Rack



Open rack shelves fit 19.00" and 23.00" wide panel spaces. Shelves are 16 gauge steel and are flanged for added support. Shelves are adjustable for depth within rack, and come with all mounting brackets and hardware. Supports 150 Lbs. Finishes: Metallic Gray (MG) or Black Texture (BT)

| Catalog No. | Width | Depth | Wgt. Lbs. |
|-------------|--------|--------|-----------|
| SA-1278 | 17.62" | 16.00" | 8.3 |
| SA-1279 | 17.62" | 20.00" | 9.3 |
| SA-1378 | 21.62" | 16.00" | 10 |
| SA-1379 | 21.62" | 20.00" | 11 |