



Chipsmall Limited consists of a professional team with an average of over 10 year of expertise in the distribution of electronic components. Based in Hongkong, we have already established firm and mutual-benefit business relationships with customers from,Europe,America and south Asia,supplying obsolete and hard-to-find components to meet their specific needs.

With the principle of “Quality Parts,Customers Priority,Honest Operation,and Considerate Service”,our business mainly focus on the distribution of electronic components. Line cards we deal with include Microchip,ALPS,ROHM,Xilinx,Pulse,ON,Everlight and Freescale. Main products comprise IC,Modules,Potentiometer,IC Socket,Relay,Connector.Our parts cover such applications as commercial,industrial, and automotives areas.

We are looking forward to setting up business relationship with you and hope to provide you with the best service and solution. Let us make a better world for our industry!



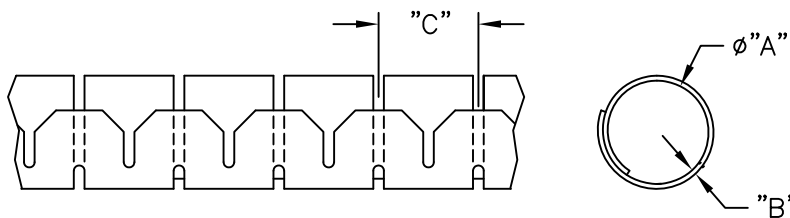
## Contact us

Tel: +86-755-8981 8866 Fax: +86-755-8427 6832

Email & Skype: [info@chipsmall.com](mailto:info@chipsmall.com) Web: [www.chipsmall.com](http://www.chipsmall.com)

Address: A1208, Overseas Decoration Building, #122 Zhenhua RD., Futian, Shenzhen, China





PART NO.	DIA. "A" REF.	MAX. BUNDLE DIA.	WALL "B" REF.	"C" REF.	STANDARD LENGTHS	INSTALLATION TOOL NO.	MATERIAL
SHR-05-6NB	.20 (5)	.24 (6)	.032 (0.8)	.39 (10)	328 ft. (100 m)	CAT-05-PP	NYLON RMS-85
SHR-08-6NB	.31 (8)	.39 (10)	.032 (0.8)	.39 (10)	328 ft. (100 m)	CAT-08-PP	
SHR-15-6NB	.59 (15)	.63 (16)	.032 (0.8)	.55 (14)	164 ft. (50 m)	CAT-15-PP	
SHR-20-6NB	.79 (20)	.90 (23)	.035 (0.9)	.67 (17)	98 ft. (30 m)	CAT-20-PP	
SHR-25-6NB	.98 (25)	.98 (25)	.039 (1.0)	.79 (20)	65 ft. (20 m)	CAT-25-PP	
SHR-32-6NB	1.25 (32)	1.25 (32)	.050 (1.3)	.980 (24.9)	49 ft. (15 m)	CAT-32-PP	
SHR-05-PPB	.20 (5)	.24 (6)	.032 (0.8)	.39 (10)	328 ft. (100 m)	CAT-05-PP	POLYPROPYLENE RMS-94
SHR-08-PPB	.31 (8)	.39 (10)	.032 (0.8)	.39 (10)	328 ft. (100 m)	CAT-08-PP	
SHR-15-PPB	.59 (15)	.63 (16)	.032 (0.8)	.55 (14)	164 ft. (50 m)	CAT-15-PP	
SHR-20-PPB	.79 (20)	.90 (23)	.035 (0.9)	.67 (17)	98 ft. (30 m)	CAT-20-PP	
SHR-25-PPB	.98 (25)	.98 (25)	.039 (1.0)	.79 (20)	65 ft. (20 m)	CAT-25-PP	
SHR-32-PPB	1.25 (32)	1.25 (32)	.050 (1.3)	.980 (24.9)	49 ft. (15 m)	CAT-32-PP	
SHR-05-6VOB	.20 (5)	.24 (6)	.032 (0.8)	.39 (10)	328 ft. (100 m)	CAT-05-PP	FLAME RETARDANT NYLON UL94 V-0 RMS-95,
SHR-08-6VOB	.31 (8)	.39 (10)	.032 (0.8)	.39 (10)	328 ft. (100 m)	CAT-08-PP	
SHR-15-6VOB	.59 (15)	.63 (16)	.032 (0.8)	.55 (14)	164 ft. (50 m)	CAT-15-PP	
SHR-20-6VOB	.79 (20)	.90 (23)	.035 (0.9)	.67 (17)	98 ft. (30 m)	CAT-20-PP	
SHR-25-6VOB	.98 (25)	.98 (25)	.039 (1.0)	.79 (20)	65 ft. (20 m)	CAT-25-PP	
SHR-32-6VOB	1.25 (32)	1.25 (32)	.050 (1.3)	.980 (24.9)	49 ft. (15 m)	CAT-32-PP	

1. MATERIAL: HEAT STABILIZED NYLON 6 (RMS-157)  
AVAILABLE BY SPECIAL ORDER ONLY.  
TO ORDER, USE PART NO. SHR-XX-HTNB
2. STANDARD COLOR: BLACK.  
OTHER COLORS AVAILABLE BY SPECIAL ORDER.

O	SEE CO 200319 FOR CHANGES	SK 02.05.09
N	SEE CO 200219 FOR CHANGES	SK 07.21.08
M	SEE ECN #877 FOR CHANGES	SM 11.04.04
L	SEE ECN #876 FOR CHANGES	SM 11.03.04
K	SEE ECN #857 FOR CHANGES	SM 09.27.04
J	SEE ECN #825 FOR CHANGES	SM 07.14.04
I	SEE ECN #619 FOR CHANGES	SM 05.01.03
-	SEE ENGINEERING FOR REV A-H	-
REV	DESCRIPTION	ENGR DATE

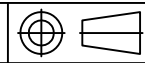
TITLE:

SLIT HARNESS WRAP

TOLERANCES  
UNLESS NOTED  
.XX=±.020  
.XXX=±.015  
FRAC=1/64  
ANG=1°

FILE # SHR  
MAT'L: SEE NOTES  
RE: RICHCO INC

DWN: J.B.  
DT: 01-05-97  
APP:  
DT:  
RICHCO INC.  
PO BOX 804238, CHICAGO, 60680  
(773) 539-4060



DWG IN  
IN(mm)



PRELIMINARY

PART #  
SEE CHART

PRINT  
TYPE  
CA