



Chipsmall Limited consists of a professional team with an average of over 10 year of expertise in the distribution of electronic components. Based in Hongkong, we have already established firm and mutual-benefit business relationships with customers from,Europe,America and south Asia,supplying obsolete and hard-to-find components to meet their specific needs.

With the principle of “Quality Parts,Customers Priority,Honest Operation,and Considerate Service”,our business mainly focus on the distribution of electronic components. Line cards we deal with include Microchip,ALPS,ROHM,Xilinx,Pulse,ON,Everlight and Freescale. Main products comprise IC,Modules,Potentiometer,IC Socket,Relay,Connector.Our parts cover such applications as commercial,industrial, and automotives areas.

We are looking forward to setting up business relationship with you and hope to provide you with the best service and solution. Let us make a better world for our industry!



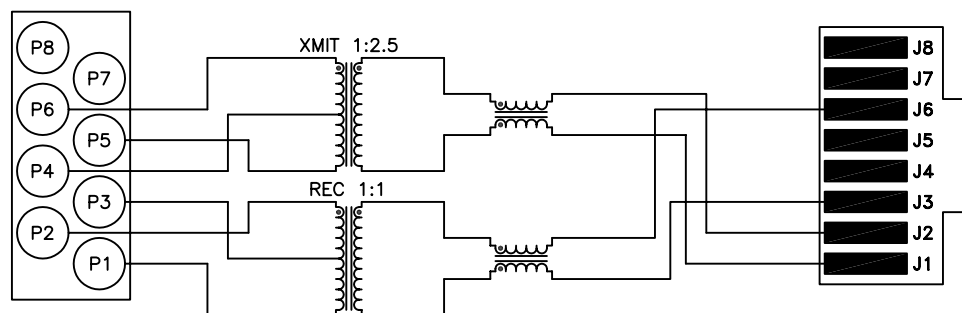
## Contact us

Tel: +86-755-8981 8866 Fax: +86-755-8427 6832

Email & Skype: [info@chipsmall.com](mailto:info@chipsmall.com) Web: [www.chipsmall.com](http://www.chipsmall.com)

Address: A1208, Overseas Decoration Building, #122 Zhenhua RD., Futian, Shenzhen, China



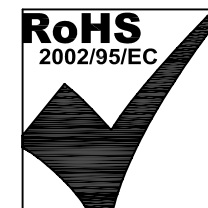


#### ELECTRICAL SPECIFICATIONS:

- |                               |                              |                             |
|-------------------------------|------------------------------|-----------------------------|
| 1.0 TURNS RATIO:              | (P2-P3-P1) : (J6-J3)         | : 1CT : 1 ±3%               |
|                               | (P6-P4-P5) : (J2-J1)         | : 1CT : 2.5 ±3%             |
| 2.0 INDUCTANCE:               | (P2-P1)                      | : 200uH MIN. @ 0.01V, 10KHz |
|                               | (P6-P5)                      | : 35uH MIN. @ 0.01V, 10KHz  |
| 3.0 LEAKAGE INDUCTANCE:       | P2-P1 (WITH J6 AND J3 SHORT) | : 0.3uH MAX. @ 1MHz         |
|                               | P6-P5 (WITH J2 AND J1 SHORT) | : 0.3uH MAX. @ 1MHz         |
| 4.0 INTERWINDING CAPACITANCE: | (P2,P1) TO (J6,J3)           | : 10pf MAX @ 1MHz           |
|                               | (P6,P5) TO (J2,J1)           | : 10pf MAX. @ 1MHz          |
| 5.0 DC RESISTANCE:            | (J6-J3)=(J2-J1)              | : 1.0 ohms Max.             |
|                               | (P6-P4)=(P4-P5)              | : 0.3 ohms Max.             |
|                               | (P2-P3)=(P3-P1)              | : 0.3 ohms Max.             |
| 6.0 DIELECTRIC WITHSTAND:     | (P2,P1) TO (J6,J3)           | : 1500VAC                   |
|                               | (P6,P5) TO (J2,J1)           | : 1500VAC                   |

#### NOTES

1.0 ALL J-PINS SHALL BE LOADED.  
P-PINS (SOLDER PINS) WITHOUT  
ELECTRICAL CONNECTIONS CAN BE  
OMITTED.



**Bel Stewart Connector**  
11118 Susquehanna Trail, South  
Glen Rock, Pa 17327-9199  
717.234.7512

**MagJack®**

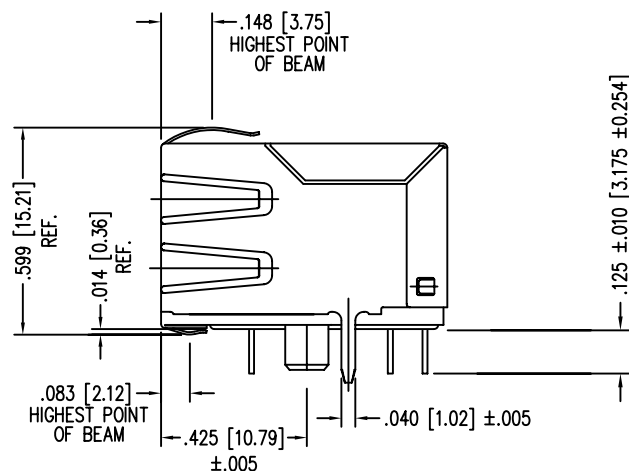
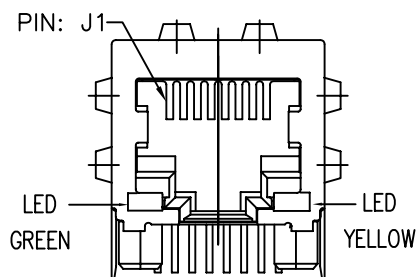
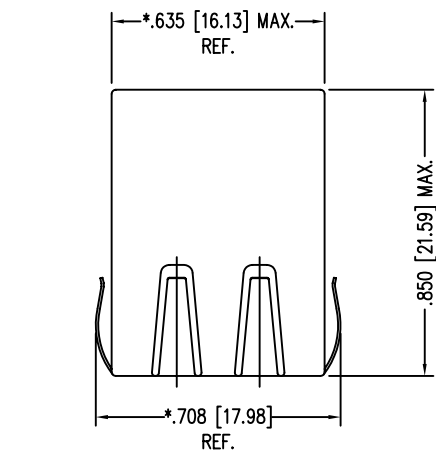
<http://www.stewartconnector.com>

THIS DRAWING AND THE SUBJECT MATTER SHOWN THEREON ARE CONFIDENTIAL AND PROPERTY OF BEL STEWART CONNECTOR AND SHALL NOT BE REPRODUCED, COPIED, OR USED IN ANY MANNER WITHOUT PRIOR WRITTEN CONTENT OF BEL STEWART CONNECTOR. THE SUBJECT MATTER MAY BE PATENTED OR A PATENT MAY BE PENDING.

SHEET  
1 OF 3

DRAWING NO.  
SI-60125-F

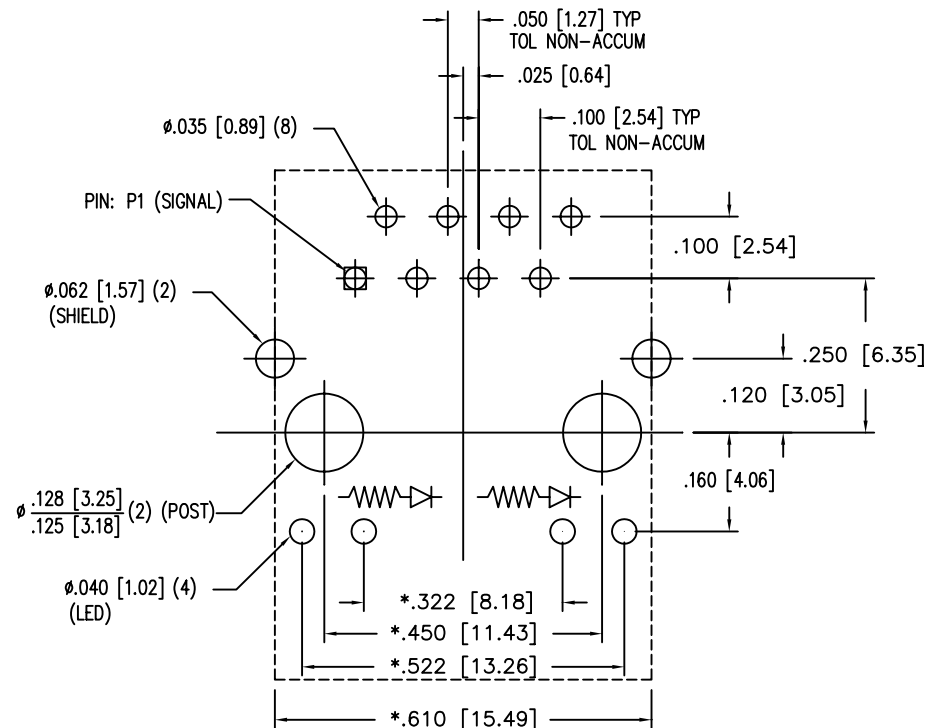
REV.  
03



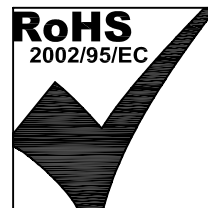
#### NOTES:

- CONNECTOR MATERIALS:  
HOUSING: THERMOPLASTIC UL94 V-0  
CONTACT/SHIELD: COPPER ALLOY  
SHIELD PLATING: NICKEL OR TIN  
CONTACT PLATING: SELECTIVE GOLD,  
50 MICRO-INCHES MIN. IN CONTACT AREA.
- PIN NOT ELECTRICALLY CONNECTED MAYBE OMITTED.  
SEE ELECTRICAL DRAWING FOR OMITTED PINS.
- TOLERANCES COMPLY WITH F.C.C. DIMENSION REQUIREMENTS.
- THE SUGGESTED PANEL OPENING IS INTENDED TO GIVE  
USER THE ABILITY TO HAVE REASONABLE JACK/PANEL  
CLEARANCES, YET MAINTAIN GROUNDING CAPABILITY.
- WAVE SOLDER COMPATIBLE - PREHEAT 125°C/90SECS.

CT720034X1/24-0205



P.C.B. RECOMMENDED HOLE LAYOUT  
SEEN FROM COMPONENT SIDE  
TOLERANCE  $\pm .003$  [0.08] UNLESS OTHERWISE SPECIFIED



LED SPECIFICATION			
STANDARD LED	WAVELENGTH	* Forward V (MAX)	(TYP)
GREEN	565 nm	2.5 V	2.2 V
YELLOW	590 nm	2.5 V	2.1 V

\*WITH A FORWARD CURRENT OF 20 mA

Bel Stewart Connector

11118 Susquehanna Trail, South  
Glen Rock, Pa 17327-9199  
717.234.7512

**MagJack®**

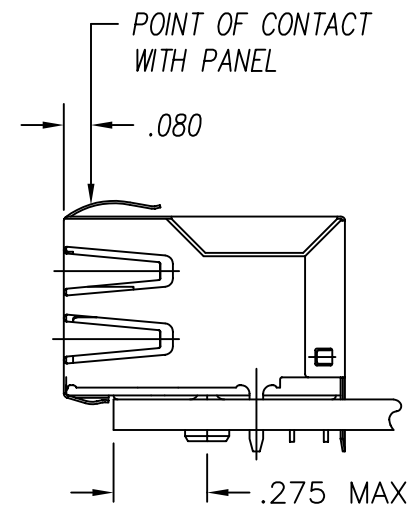
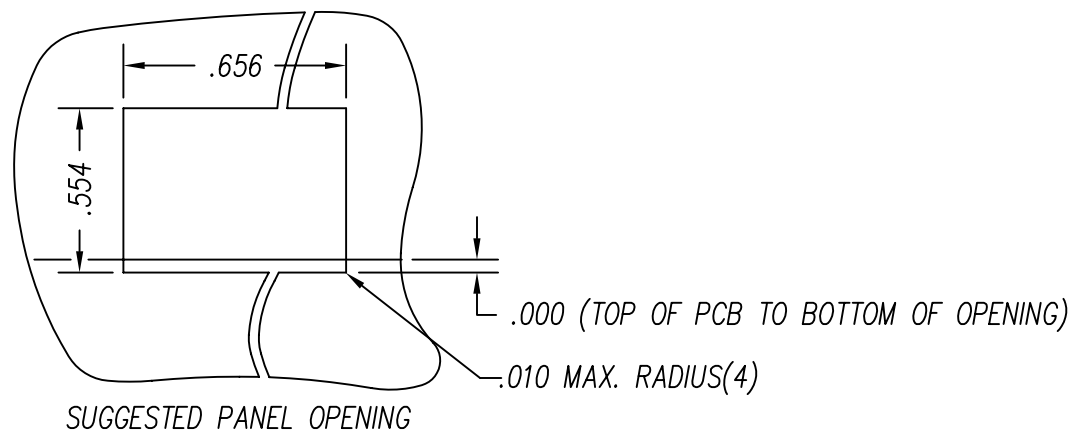
<http://www.stewartconnector.com>

THIS DRAWING AND THE SUBJECT MATTER SHOWN THEREON ARE CONFIDENTIAL AND PROPERTY OF BEL STEWART CONNECTOR AND SHALL NOT BE REPRODUCED, COPIED, OR USED IN ANY MANNER WITHOUT PRIOR WRITTEN CONTENT OF BEL STEWART CONNECTOR. THE SUBJECT MATTER MAY BE PATENTED OR A PATENT MAY BE PENDING.

SHEET  
2 OF 3

DRAWING NO.  
SI-60125-F

REV.  
02



CT720034X1/24-0205

Bel Stewart Connector  
11118 Susquehanna Trail, South  
Glen Rock, Pa 17327-9199  
717.234.7512

**MagJack®**

<http://www.stewartconnector.com>

THIS DRAWING AND THE SUBJECT MATTER SHOWN THEREON ARE CONFIDENTIAL AND PROPERTY OF BEL STEWART CONNECTOR AND SHALL NOT BE REPRODUCED, COPIED, OR USED IN ANY MANNER WITHOUT PRIOR WRITTEN CONTENT OF BEL STEWART CONNECTOR. THE SUBJECT MATTER MAY BE PATENTED OR A PATENT MAY BE PENDING.

SHEET  
3 OF 3

DRAWING NO.  
SI-60125-F

REV.  
02