



Chipsmall Limited consists of a professional team with an average of over 10 year of expertise in the distribution of electronic components. Based in Hongkong, we have already established firm and mutual-benefit business relationships with customers from,Europe,America and south Asia,supplying obsolete and hard-to-find components to meet their specific needs.

With the principle of “Quality Parts,Customers Priority,Honest Operation,and Considerate Service”,our business mainly focus on the distribution of electronic components. Line cards we deal with include Microchip,ALPS,ROHM,Xilinx,Pulse,ON,Everlight and Freescale. Main products comprise IC,Modules,Potentiometer,IC Socket,Relay,Connector.Our parts cover such applications as commercial,industrial, and automotives areas.

We are looking forward to setting up business relationship with you and hope to provide you with the best service and solution. Let us make a better world for our industry!



Contact us

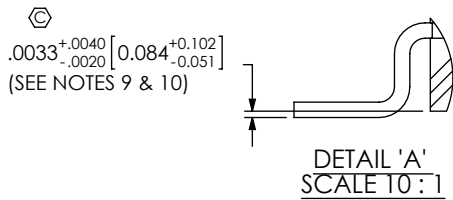
Tel: +86-755-8981 8866 Fax: +86-755-8427 6832

Email & Skype: info@chipsmall.com Web: www.chipsmall.com

Address: A1208, Overseas Decoration Building, #122 Zhenhua RD., Futian, Shenzhen, China



DO NOT SCALE FROM THIS PRINT



SIB-1XX-XX-XX-S-XX-XX

NO OF POSITIONS
-02 THRU -30
(PER ROW)

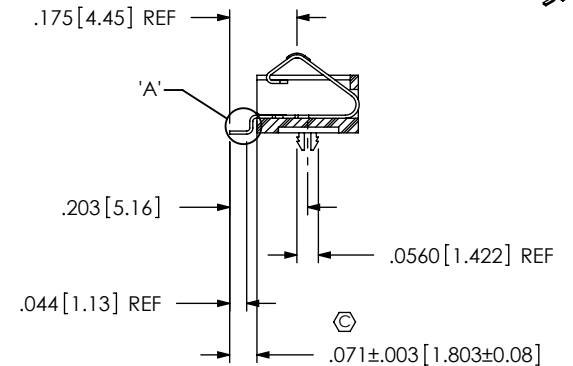
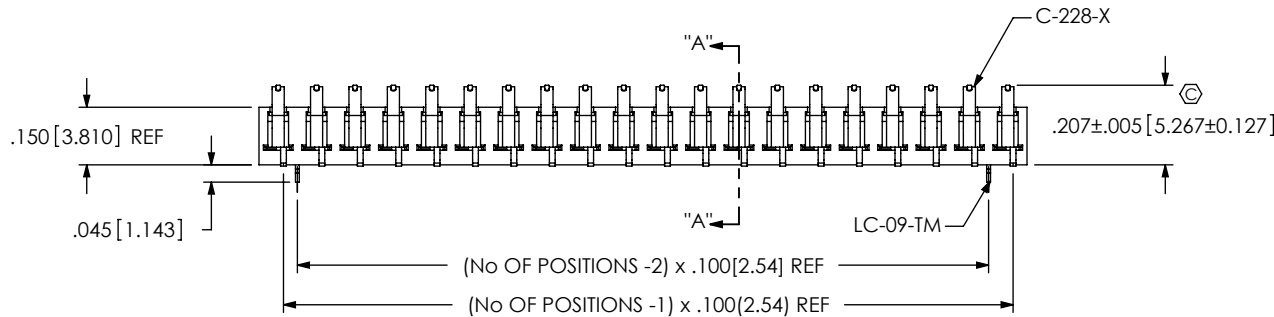
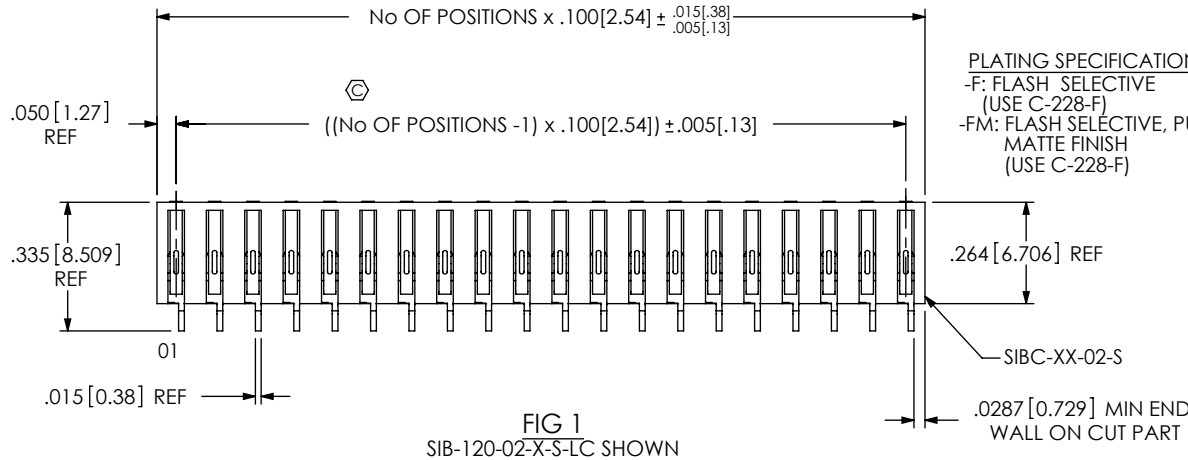
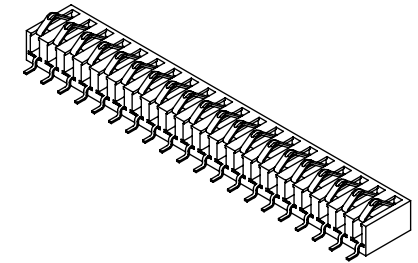
LEAD STYLE
-02: SURFACE MOUNT
(USE C-228-X)

THREADED INSERT OPTION
[NOT AVAILABLE ON 30 POS]
* -E: TI-2-56-115 (ENGLISH)
* -M: TI-M2-4-115-N (METRIC)
(SEE FIG. 2, SHEET 2)
* -TI: NO INSERTS PLACED IN BODY
(SEE TABLE 1 ON SHEET 2 FOR
-TI POSITIONAL OFFERINGS)

OPTION
-LC: LOCKING CLIPS
(USE LC-09-TM) (SEE NOTE 13)
[N/A WITH THREADED INSERT OPTION
-E, -M OR -TI]

ROW SPECIFICATION
-S: SINGLE (USE SIBC-XX-02-S)

* AVAILABLE TO EXISTING CUSTOMERS ONLY



POSITIONS	"A"
-02 THRU -19	.004[.10]
-20 THRU -30	.006[.15]

NOTES:

1. $\text{\textcircled{C}}$ REPRESENTS A CRITICAL DIMENSION.
2. COPLANARITY: SEE TABLE 2.
3. BURR ALLOWANCE: .0015[.038] MAX.
4. MAXIMUM CUT FLASH: .010[.3], CAN NOT EXTEND PAST TAIL.
5. MINIMUM PUSHOUT FORCE: 1 LB.
6. MAXIMUM ALLOWABLE BOW: .004[.10] INCH/INCH AFTER ASSEMBLY.
7. THREADED INSERT MUST HANDLE 25 IN-OZ OF TORQUE WITHOUT ROTATING OR LOOSENING.
8. THREADED INSERT RETENTION: 10 LBS. MINIMUM.
9. MAX VARIATION FROM PIN TO PIN TO BE .002.
10. MEASURED ON UNCUT PARTS.
11. NOTE DELETED.
12. NOTE DELETED.
13. DUE TO THE HIGH AMOUNT OF INSERTION FORCE NEEDED, THE -LC OPTION IS NOT COMPATIBLE WITH AUTO PLACEMENT. SAMTEC RECOMMENDS MANUAL PLACEMENT FOR ALL ASSEMBLIES WITH THE -LC OPTION.

UNLESS OTHERWISE SPECIFIED, DIMENSIONS ARE IN INCHES. TOLERANCES ARE:
DECIMALS ANGLES
.XX: ±.01 [.3] 2°
.XXX: ±.005 [.13]
.XXXX: ±.0020 [.051]

PROPRIETARY NOTE
THIS DOCUMENT CONTAINS INFORMATION CONFIDENTIAL AND PROPRIETARY TO SAMTEC, INC. AND SHALL NOT BE REPRODUCED OR TRANSFERRED TO OTHER DOCUMENTS OR DISCLOSED TO OTHERS OR USED FOR ANY PURPOSE OTHER THAN THAT WHICH IT WAS OBTAINED WITHOUT THE EXPRESSED WRITTEN CONSENT OF SAMTEC, INC.



520 PARK EAST BLVD, NEW ALBANY, IN 47150
PHONE: 812-944-6733 FAX: 812-948-5047
e-Mail: info@SAMTEC.com code 55322

MATERIAL: DO NOT SCALE DRAWING SHEET SCALE: 2:1
INSULATOR: LCP, COLOR: BLACK
CONTACT: PHOSPHOR BRONZE

DESCRIPTION:
.100 SINGLE INTERFACE BEAM ASSEMBLY
DWG. NO.
SIB-1XX-XX-XX-S-XX-XX

FIG 2
SIB-120-02-X-S-E SHOWN

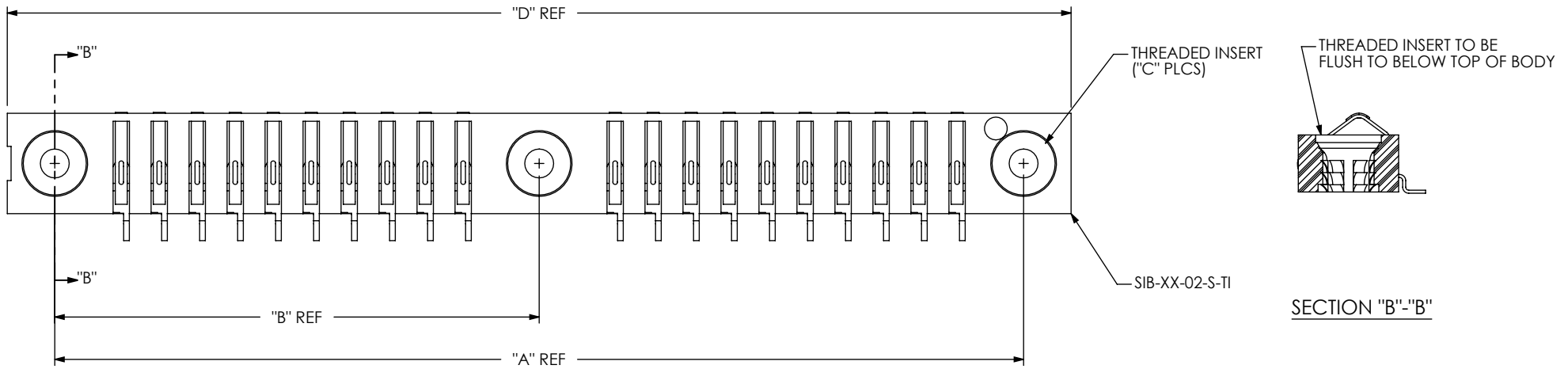
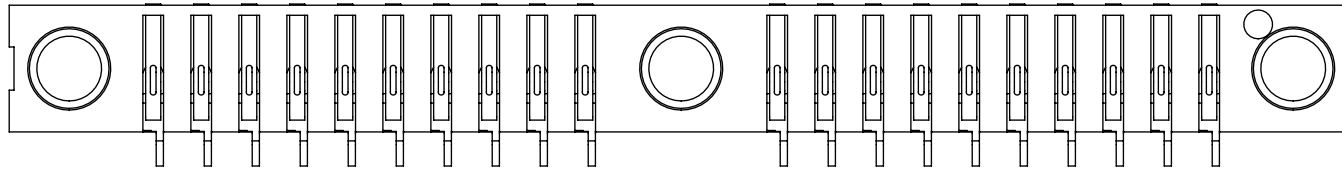
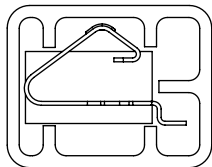


FIG 3
SIB-120-02-X-S-TI SHOWN



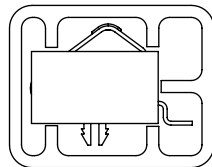
PACKAGING VIEW
(PARTS TO HAVE POSITION #1 LOADED IN
SAME DIRECTION AS ARROW ON TUBE)

NO -LC OPTION



TUBE: PT-1-24-01-118
PLUG: TP-03

-LC OPTION



TUBE: PT-1-24-01-118
PLUG: TP-03

TABLE 1: THREADED INSERT OPTION

POS	"A"	"B"	"C"	"D"
-05	.750[19.05]	N/A	2	1.000[25.40]
-10	1.250[31.75]	N/A	2	1.500[38.10]
-15	1.750[44.45]	N/A	2	2.000[50.80]
-20	2.550[64.77]	1.275[32.39]	3	2.800[71.12]
-25	3.050[77.47]	1.475[37.47]	3	3.300[83.82]

F:\DWG\MISC\MKTG\SIB-1XX-XX-XX-S-XX-XX-MKT.SLDDRW

PROPRIETARY NOTE

THIS DOCUMENT CONTAINS INFORMATION
CONFIDENTIAL AND PROPRIETARY TO
SAMTEC, INC. AND SHALL NOT BE REPRODUCED OR
TRANSFERRED TO OTHER DOCUMENTS OR
DISCLOSED TO OTHERS OR USED FOR ANY
PURPOSE OTHER THAN THAT WHICH IT WAS
OBTAINED WITHOUT THE EXPRESSED WRITTEN
CONSENT OF SAMTEC, INC.

DO NOT SCALE DRAWING

SHEET SCALE: 2.5:1

samtec

520 PARK EAST BLVD, NEW ALBANY, IN 47150
PHONE: 812-944-6733 FAX: 812-948-5047
e-Mail info@SAMTEC.com code 55322

DESCRIPTION:
.100 SINGLE INTERFACE BEAM ASSEMBLY

DWG. NO. **SIB-1XX-XX-XX-S-XX-XX**

BY: DEAN P 9/20/2000 SHEET 2 OF 2