



Chipsmall Limited consists of a professional team with an average of over 10 year of expertise in the distribution of electronic components. Based in Hongkong, we have already established firm and mutual-benefit business relationships with customers from,Europe,America and south Asia,supplying obsolete and hard-to-find components to meet their specific needs.

With the principle of “Quality Parts,Customers Priority,Honest Operation,and Considerate Service”,our business mainly focus on the distribution of electronic components. Line cards we deal with include Microchip,ALPS,ROHM,Xilinx,Pulse,ON,Everlight and Freescale. Main products comprise IC,Modules,Potentiometer,IC Socket,Relay,Connector.Our parts cover such applications as commercial,industrial, and automotives areas.

We are looking forward to setting up business relationship with you and hope to provide you with the best service and solution. Let us make a better world for our industry!



Contact us

Tel: +86-755-8981 8866 Fax: +86-755-8427 6832

Email & Skype: info@chipsmall.com Web: www.chipsmall.com

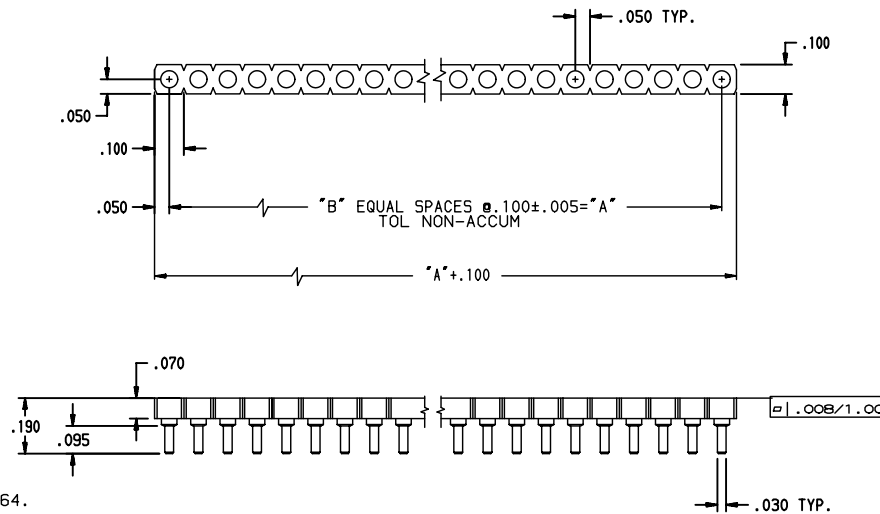
Address: A1208, Overseas Decoration Building, #122 Zhenhua RD., Futian, Shenzhen, China



TABLE 2: LEAD FREE VERSION

TABLE 2 CONTACTS		
[XXX]BLF	CLIP PLATING	SHELL PLATING
157BLF	200 μ " TIN OVER 50 μ " NICKEL	200 μ " TIN OVER 100 μ " NICKEL
160BLF	30 μ " GOLD OVER 50 μ " NICKEL	200 μ " TIN OVER 100 μ " NICKEL

TABLE 1				
PART NUMBER			DIMENSION	
SIP050-1 X [] - [XXX]B(LF)			"A"	"B"
	01		0	0
	02		.100	1
	03		.200	2
	04		.300	3
	05		.400	4
	06		.500	5
	07		.600	6
	08		.700	7
	09		.800	8
	10		.900	9
	11		1.000	10
	12		1.100	11
	13		1.200	12
	14		1.300	13
	15		1.400	14
	16		1.500	15
	17		1.600	16
	18		1.700	17
	19		1.800	18
	20		1.900	19
	21		2.000	20
	22		2.100	21
	23		2.200	22
	24		2.300	23
	25		2.400	24
	26		2.500	25
	27		2.600	26
	28		2.700	27
	29		2.800	28
	30		2.900	29
	31		3.000	30
	32		3.100	31
	64		6.300	63



NOTES:

- NUMBER OF CONTACTS PER ROW (01 TO 32), AND 64.
- MATERIAL:
GLASS FILLED POLYESTER (PCT)
RATED UL 94V-0, COLOR BLACK.
- CONTACT MATERIAL:
OUTER SHELL: BRASS ALLOY 360, 1/2 HARD PER QQ-B-626.
INNER CONTACT: BERYLLIUM COPPER, ALLOY 172 PER QQ-C-533.
- CONTACT PLATING:
TIN/LEAD OR LEAD-FREE PER MIL-P-81728 TYPE 1,
NICKEL PER QQ-N-290.
GOLD PER MIL-G-45204, TYPE 1, GRADE C.
- RECOMMENDED PCB THRU HOLE DIA. .036 ± .003.

LEAD FREE PART NUMBER (SEE TABLE)
SIP050-1 X-[]-[XXX]BLF

NOTE RoHS INFORMATION

- The "LF" products meet European Union Directives and other country regulations as described in 65-22-008.
- The housing will withstand exposure to 260°C peak temperature for 20 seconds in a wave solder application with a 1.6mm minimum thick circuit board. See application notes/procedures if they are available.
- Packaging spec: see 65-14-920

rev	ecn no	dr	date
A	V00229	DLW	1/10/00
B	V00776	DLW	3/14/00
C	V12453	CRG	10/24/01
D	V03-1035	DAI	09/22/03
E	LS06-0004	LGO	17/01/06
F	LS07-0141	HLE	2007/05/21
G	LS07-0271	HLE	2007/10/29

www.fciconnect.com		surface ISO 1302	tolerance std ISO 406 ISO 1101	projection mm
		TOLERANCES UNLESS OTHERWISE SPECIFIED		
Dr	D. WOLFORD	1/10/00	0.X	±0.1
Eng	A. VASBINDER	1/10/00	0.XX	±0.1
Chr	A. VASBINDER	1/10/00	0.XX	±0.1
Appr	A. VASBINDER	1/10/00	0.XXX	±0.1
ANGULAR		LINEAR	size	A3
Product family		SOCKET	Scale	35:1
ECN		LS07-0271	Spec ref	-
FCI		SINGLE ROW SIP SOCKET (LOW PROFILE)		Rev. G
catalog no		58805		sheet 1 of 1