



Chipsmall Limited consists of a professional team with an average of over 10 year of expertise in the distribution of electronic components. Based in Hongkong, we have already established firm and mutual-benefit business relationships with customers from,Europe,America and south Asia,supplying obsolete and hard-to-find components to meet their specific needs.

With the principle of “Quality Parts,Customers Priority,Honest Operation,and Considerate Service”,our business mainly focus on the distribution of electronic components. Line cards we deal with include Microchip,ALPS,ROHM,Xilinx,Pulse,ON,Everlight and Freescale. Main products comprise IC,Modules,Potentiometer,IC Socket,Relay,Connector.Our parts cover such applications as commercial,industrial, and automotives areas.

We are looking forward to setting up business relationship with you and hope to provide you with the best service and solution. Let us make a better world for our industry!



Contact us

Tel: +86-755-8981 8866 Fax: +86-755-8427 6832

Email & Skype: info@chipsmall.com Web: www.chipsmall.com

Address: A1208, Overseas Decoration Building, #122 Zhenhua RD., Futian, Shenzhen, China



PART NUMBER CODING

SIP110-PP_C-D_-SK-BK

COLOR

BK= BLACK

NUMBER OF POSITIONS

(CONTACTS PER ROW)

PLATING

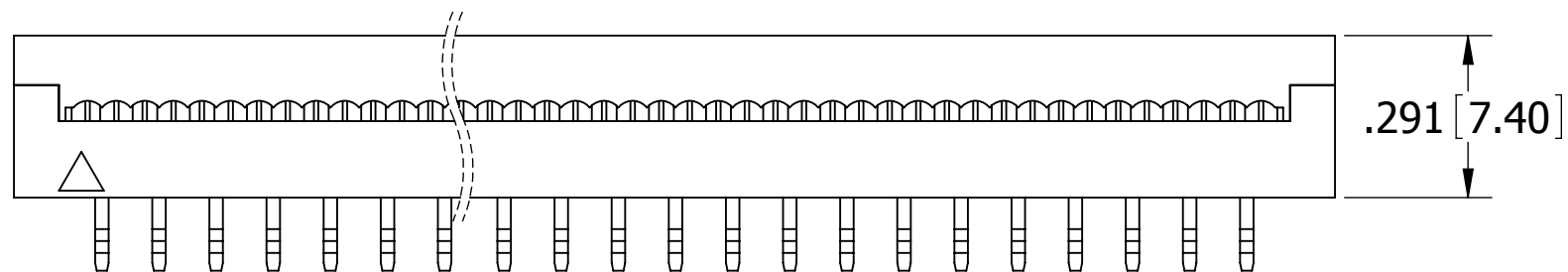
(SEE PLATING TABLE)

PLATING TABLE

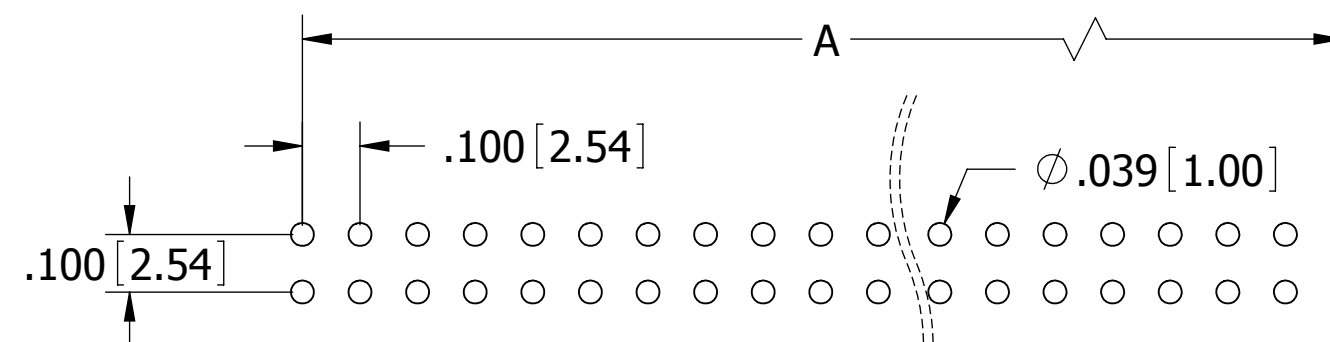
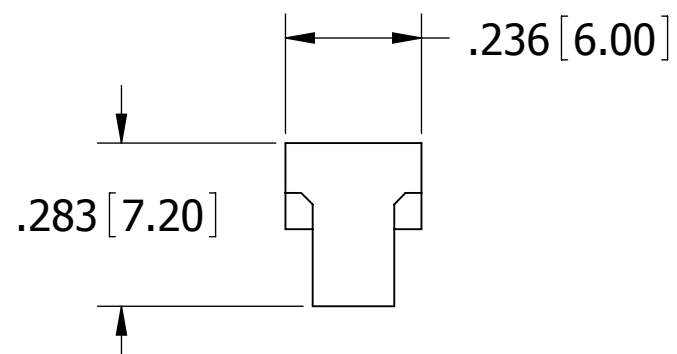
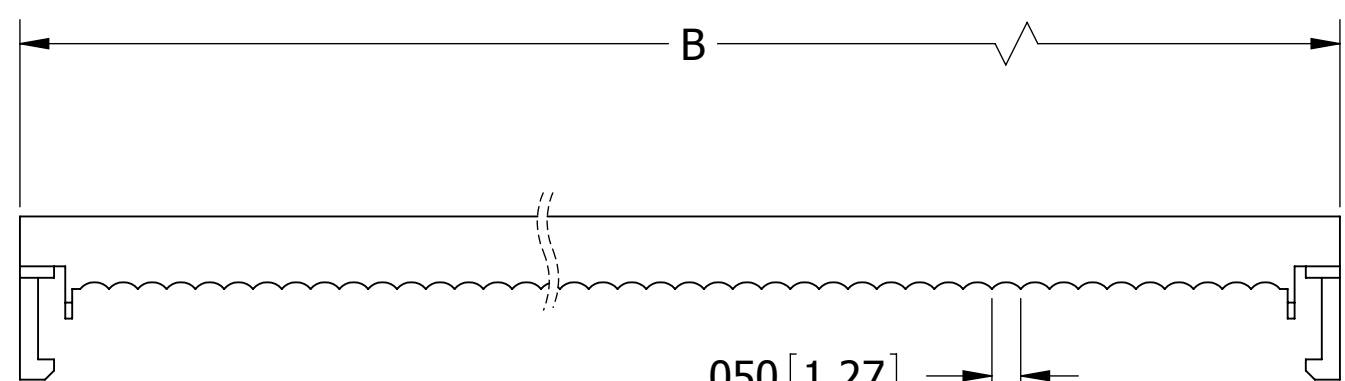
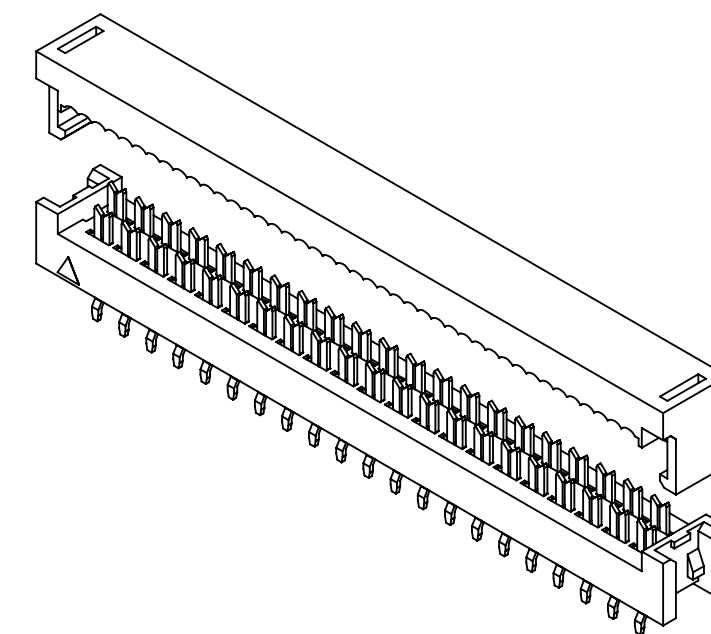
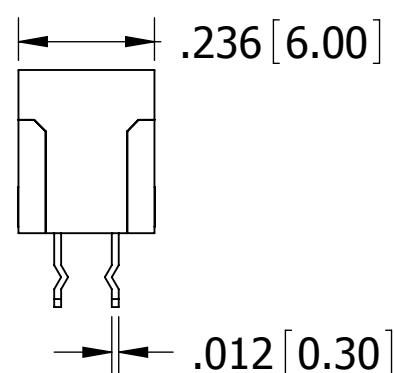
CONTACT SURFACE	TERMINATION
P = GOLD FLASH	GOLD FLASH
V = GOLD FLASH	NICKEL
K = .000015" GOLD	NICKEL
J = .000015" GOLD	GOLD FLASH
E = .000100" PURE TIN, MATTE	.000100" PURE TIN, MATTE

REVISIONS

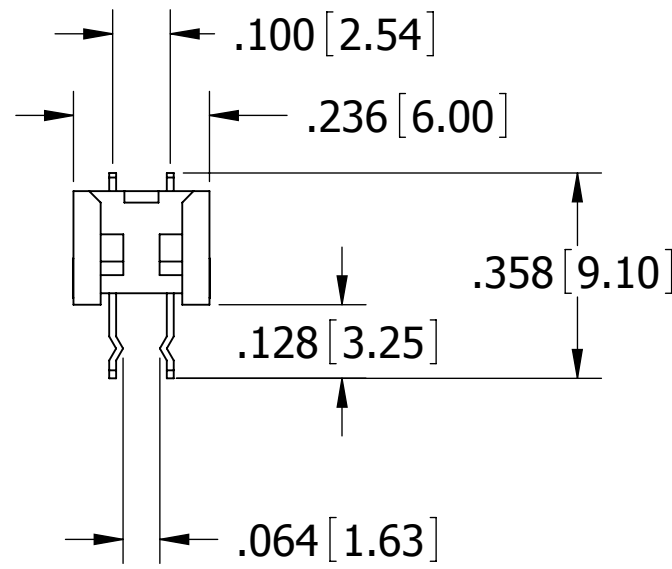
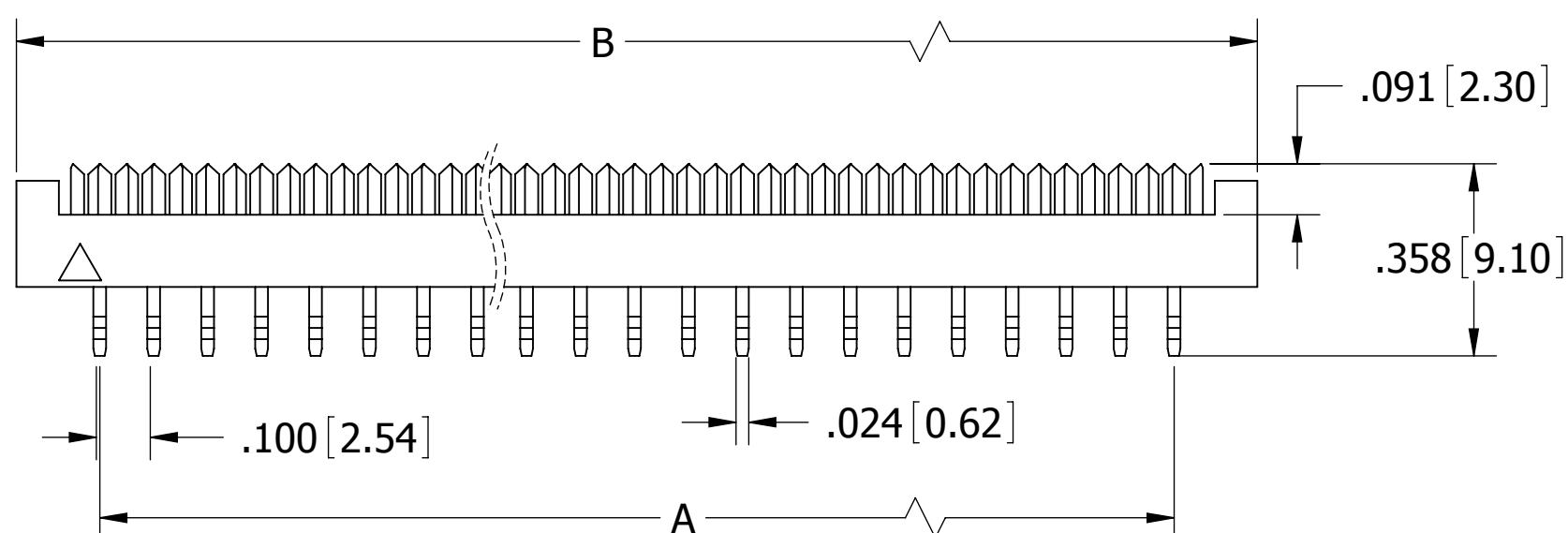
REV.	ECO. NO	DESCRIPTION	DATE	BY
A	1930	INITIAL RELEASE	3/17/2009	JH
B	2159	UPDATE NOTE 8 FLAT RIBBON CABLE SPEC	07/05/2010	LH



ASSEMBLED FRONT VIEW



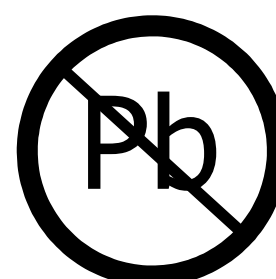
RECOMMENDED PCB LAYOUT



PART NUMBER	POSITIONS/ CONTACTS	A		B	
		INCH	MM	INCH	MM
SIP110-PP_C-D03-SK-BK	03/06	0.200	5.08	0.509	12.94
SIP110-PP_C-D04-SK-BK	04/08	0.300	7.62	0.609	15.48
SIP110-PP_C-D05-SK-BK	05/10	0.400	10.16	0.713	18.10
SIP110-PP_C-D06-SK-BK	06/12	0.500	12.70	0.807	20.51
SIP110-PP_C-D07-SK-BK	07/14	0.600	15.24	0.907	23.05
SIP110-PP_C-D08-SK-BK	08/16	0.700	17.78	1.009	25.64
SIP110-PP_C-D09-SK-BK	09/18	0.800	20.32	1.108	28.15
SIP110-PP_C-D10-SK-BK	10/20	0.900	22.86	1.212	30.78
SIP110-PP_C-D12-SK-BK	12/24	1.100	27.94	1.412	35.86
SIP110-PP_C-D13-SK-BK	13/26	1.200	30.48	1.512	38.40
SIP110-PP_C-D14-SK-BK	14/28	1.300	33.02	1.598	40.60
SIP110-PP_C-D15-SK-BK	15/30	1.400	35.56	1.713	43.50
SIP110-PP_C-D17-SK-BK	17/34	1.600	40.64	1.913	48.58
SIP110-PP_C-D20-SK-BK	20/40	1.900	48.26	2.213	56.20
SIP110-PP_C-D25-SK-BK	25/50	2.400	60.96	2.717	69.00
SIP110-PP_C-D30-SK-BK	30/60	2.900	73.66	3.219	81.75
SIP110-PP_C-D32-SK-BK	32/64	3.100	78.74	3.419	86.83

NOTES:

1. INSULATOR MATERIAL: PBT 30% GLASS FIBER.
2. CONTACT MATERIAL: PHOSPHOR BRONZE.
3. OPERATING TEMPERATURE: -40 °C TO +105 °C.
4. UL FLAMMABILITY RATING: 94V-0.
5. CURRENT RATING: 1 AMP PER CONTACT.
6. INSULATION RESISTANCE: 5,000M OHMS MIN.
7. DIELECTRIC WITHSTANDING: 1,000 VAC.
8. FOR .050"[1.27mm] PITCH FLAT RIBBON CABLE, 26 - 28 AWG WIRE RANGE.



RoHS COMPLIANT

UNLESS OTHERWISE SPECIFIED:
DIMENSIONS ARE IN INCHES[MM]

TOLERANCES:
ANGULAR: ± 30°
.XX = ± .01 [3]
.XXX = ± .008 [20]
.XXXX = ± .0040 [100]

INTERPRET DIMENSIONS AND GEOMETRIC
TOLERANCING
PER: ASME Y14.5M-2009

DATE: 4/7/2009
NAME: JH
DRAWN: JH
THE INFORMATION HEREIN CONTAINS
PROPRIETARY INFORMATION OF
SULLINS ELECTRONICS AND IS NOT
TO BE REPRODUCED, USED OR
DISCLOSED TO OTHERS FOR ANY
PURPOSE EXCEPT AS SPECIFICALLY
AUTHORIZED IN WRITING BY AN
OFFICER OF SULLINS ELECTRONICS.



DESCRIPTION:
IDC DIP PLUG, .100" CC/RS

PART NUMBER:
SIP110-PP_C-D_-SK-BK

SIZE: C
DWG. NO.: 11228
REV: B

SCALE: 2:1
SHEET 1 OF 1