



Chipsmall Limited consists of a professional team with an average of over 10 year of expertise in the distribution of electronic components. Based in Hongkong, we have already established firm and mutual-benefit business relationships with customers from,Europe,America and south Asia,supplying obsolete and hard-to-find components to meet their specific needs.

With the principle of “Quality Parts,Customers Priority,Honest Operation,and Considerate Service”,our business mainly focus on the distribution of electronic components. Line cards we deal with include Microchip,ALPS,ROHM,Xilinx,Pulse,ON,Everlight and Freescale. Main products comprise IC,Modules,Potentiometer,IC Socket,Relay,Connector.Our parts cover such applications as commercial,industrial, and automotives areas.

We are looking forward to setting up business relationship with you and hope to provide you with the best service and solution. Let us make a better world for our industry!



## Contact us

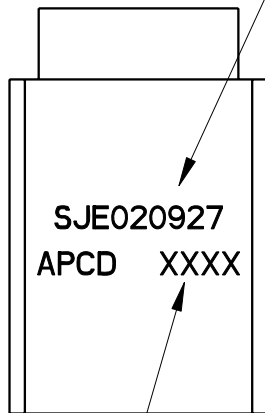
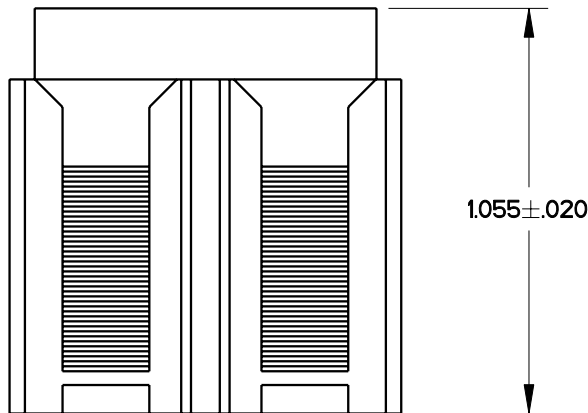
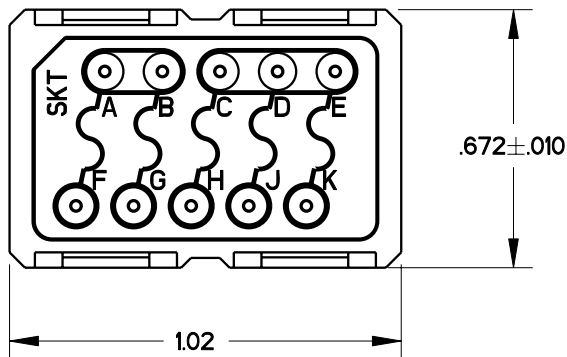
Tel: +86-755-8981 8866 Fax: +86-755-8427 6832

Email & Skype: info@chipsmall.com Web: www.chipsmall.com

Address: A1208, Overseas Decoration Building, #122 Zhenhua RD., Futian, Shenzhen, China



REV	ECN	APP'D
-	5823	



PART MARKING  
COLOR: WHITE  
.06 HIGH

NOTES:

1. MATERIALS:  
 BODY: POLYETHERIMIDE PER MIL-P-46184  
 GROMMET: SILICONE BLEND ELASTOMER  
 FUSE: 1 AMP, 125 V, QTY 5.  
 INTERNAL PIN CONTACTS: COPPER ALLOY, HARD GOLD PLATE PER MIL-G-45204.
2. PERFORMANCE SPECIFICATIONS PER MIL-T-81714 (SUBJECT TO THE LIMITATIONS OF THE FUSE SPEC.)  
 OPERATING TEMP: -65°C TO 200°C  
 INSULATION RESISTANCE: 5000 MEGOHMS AT 25°C  
 DIELECTRIC WITHSTANDING VOLTAGE:  
 1500Vrms AT SEA LEVEL  
 200Vrms AT 100,000 FT ALTITUDE  
 CURRENT RATING: 7.5A FOR SIZE 20 CONTACTS  
 VIBRATION AND SHOCK: MIL-T-81714, PARA. 3.5.8, 3.5.9
3. MODULE ACCEPTS M39029/22-192 SOCKET CONTACTS (NOT INCLUDED.)
4. MODULE OCCUPIES 2 POSITIONS WHEN INSTALLED IN M81714/67 MOUNTING RAIL.

DATE CODE

<b>DIMENSIONS</b> ANSI Y14.5M UNITS: INCHES Pro/E FILE	<b>TOLERANCES</b> .XX ±0.01 .XXX ±0.005 ANGLES ±1.0°	<b>PROJECTION</b> 	<b>Amphenol PCD</b> <b>SPECIFICATION DRAWING</b>		<b>TITLE</b> <b>SJE SERIES</b> <b>ELECTRONIC MODULE</b> <b>QTY 5, 1 AMP FUSES</b>		
			ENGR D. LANG 2/1/06		SIZE <b>A</b>	DWG NO. <b>SJE020927</b>	REV -
ORIGINAL	THIS DOCUMENT CONTAINS PROPRIETARY INFORMATION WHICH IS THE CONFIDENTIAL PROPERTY OF AMPHENOL PCD PEABODY, MA, USA		CHKD	APPD	CODE: 58982	SCALE: NONE	SHEET 1 OF 1