



Chipsmall Limited consists of a professional team with an average of over 10 year of expertise in the distribution of electronic components. Based in Hongkong, we have already established firm and mutual-benefit business relationships with customers from,Europe,America and south Asia,supplying obsolete and hard-to-find components to meet their specific needs.

With the principle of “Quality Parts,Customers Priority,Honest Operation,and Considerate Service”,our business mainly focus on the distribution of electronic components. Line cards we deal with include Microchip,ALPS,ROHM,Xilinx,Pulse,ON,Everlight and Freescale. Main products comprise IC,Modules,Potentiometer,IC Socket,Relay,Connector.Our parts cover such applications as commercial,industrial, and automotives areas.

We are looking forward to setting up business relationship with you and hope to provide you with the best service and solution. Let us make a better world for our industry!



Contact us

Tel: +86-755-8981 8866 Fax: +86-755-8427 6832

Email & Skype: info@chipsmall.com Web: www.chipsmall.com

Address: A1208, Overseas Decoration Building, #122 Zhenhua RD., Futian, Shenzhen, China

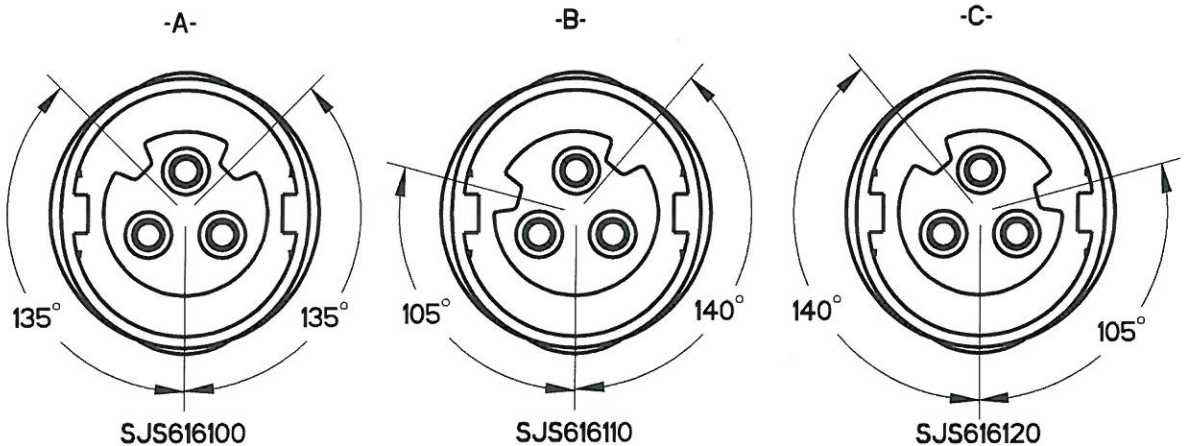


NOTES:

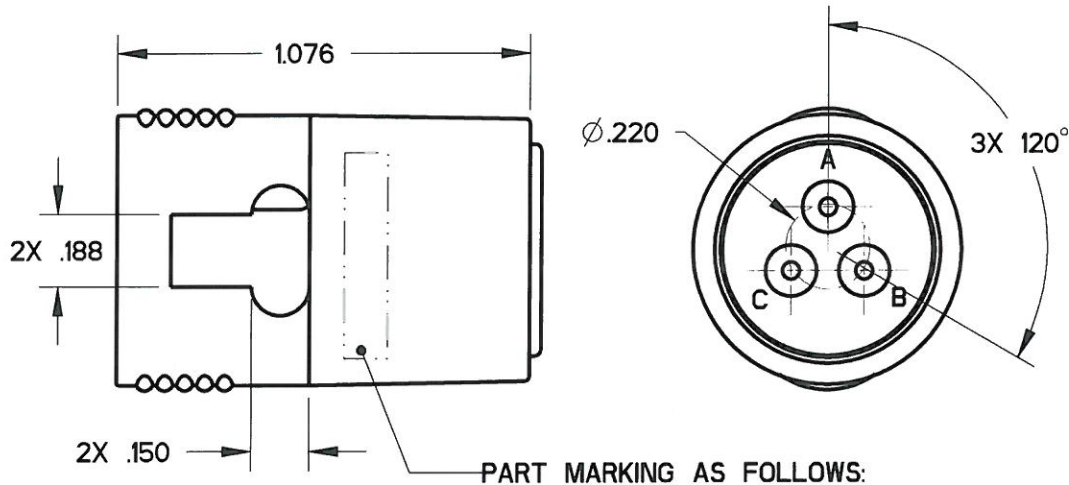
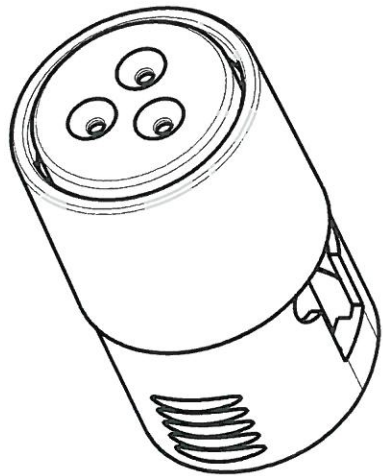
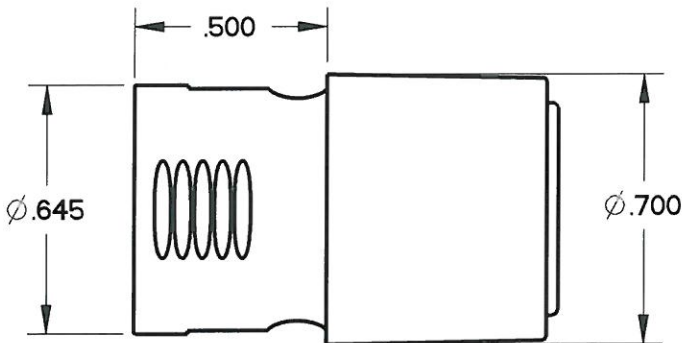
1. MATERIALS:
HOUSING: PA 6/6
CONTACT RETAINER: STAINLESS STEEL
GROMMET: SILICONE RUBBER PER A-A-59588
2. OPERATING RANGE:
TEMPERATURE: -55 °C TO 95 °C
INSULATION RESISTANCE: 5000 MEGOHMS MINIMUM
DIELECTRIC WITHSTANDING VOLTAGE: 1500 VRMS SEA LEVEL
600 VRMS @ 45,000 FT. ALTITUDE

CURRENT RATING: 13 AMPS
VIBRATION: PER EIA-364D METHOD 28, TEST CONDITION V.
3. ACCEPTS (3) M39029/56-352 SOCKET CONTACTS (NOT INCLUDED)
4. CONTACT RETENTION - 20 LBS EACH

REV	ECN	APP'D
-	5663	J. TON
A	5706	J. TON
B	5796	J. TON
C	5951	JT 9/26/06
D	6589	8/70/12/2



KEY CONFIGURATION SEE TABLE 1





PART MARKING AS FOLLOWS:

BACC63DE0316SX APCD
YYWW SJS6161XX

SEE TABLE 1 FOR FULL PART NUMBERS

DATE
CODE

TABLE 1 - PART NUMBER SCHEME			
APCD PART#	BACC PART#	KEY	COLOR
SJS616100	BACC63DE0316SA	A	RED
SJS616110	BACC63DE0316SB	B	WHITE
SJS616120	BACC63DE0316SC	C	BLUE

DIMENSIONS		TOLERANCES		PROJECTION		TITLE														
ANSI Y14.5M		.XX ±0.01				IN-LINE JUNCTION TRIPLE WIRE, SIZE 16 PLUG														
UNITS: INCHES		.XXX ±0.005																		
Pro/E FILE		ANGLES ±1.0°																		
<div>ORIGINAL</div> 		THIS DOCUMENT CONTAINS PROPRIETARY INFORMATION WHICH IS THE CONFIDENTIAL PROPERTY OF AMPHENOL PCD, BEVERLY, MA		CHKD		SIZE					DWG NO.					REV				
				10/12/10		B					SJS616100					D				
				APPD		CODE: 58982					SCALE: 2:1					SHEET 1 OF 1				
				10/12/10																