



Chipsmall Limited consists of a professional team with an average of over 10 year of expertise in the distribution of electronic components. Based in Hongkong, we have already established firm and mutual-benefit business relationships with customers from,Europe,America and south Asia,supplying obsolete and hard-to-find components to meet their specific needs.

With the principle of “Quality Parts,Customers Priority,Honest Operation,and Considerate Service”,our business mainly focus on the distribution of electronic components. Line cards we deal with include Microchip,ALPS,ROHM,Xilinx,Pulse,ON,Everlight and Freescale. Main products comprise IC,Modules,Potentiometer,IC Socket,Relay,Connector.Our parts cover such applications as commercial,industrial, and automotives areas.

We are looking forward to setting up business relationship with you and hope to provide you with the best service and solution. Let us make a better world for our industry!



Contact us

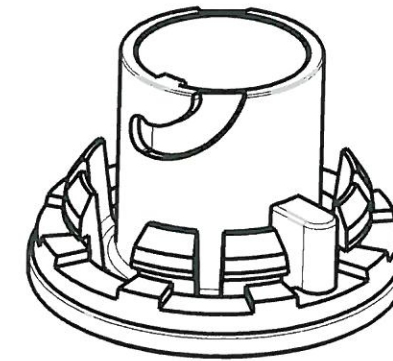
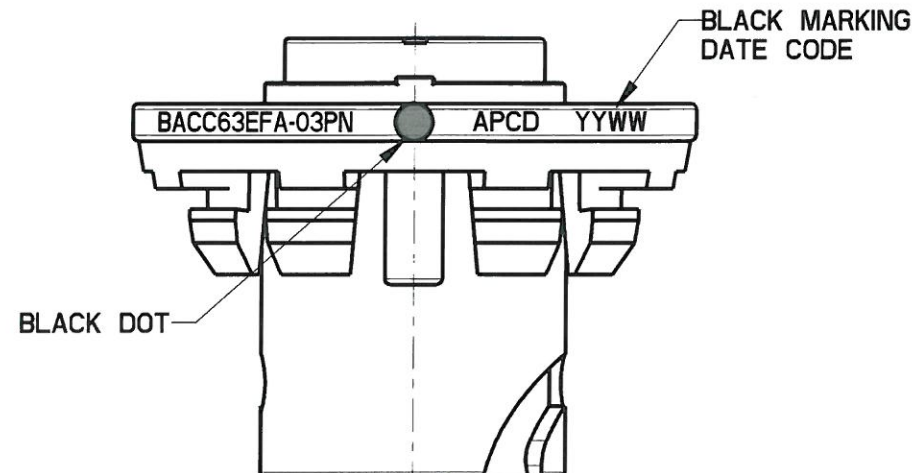
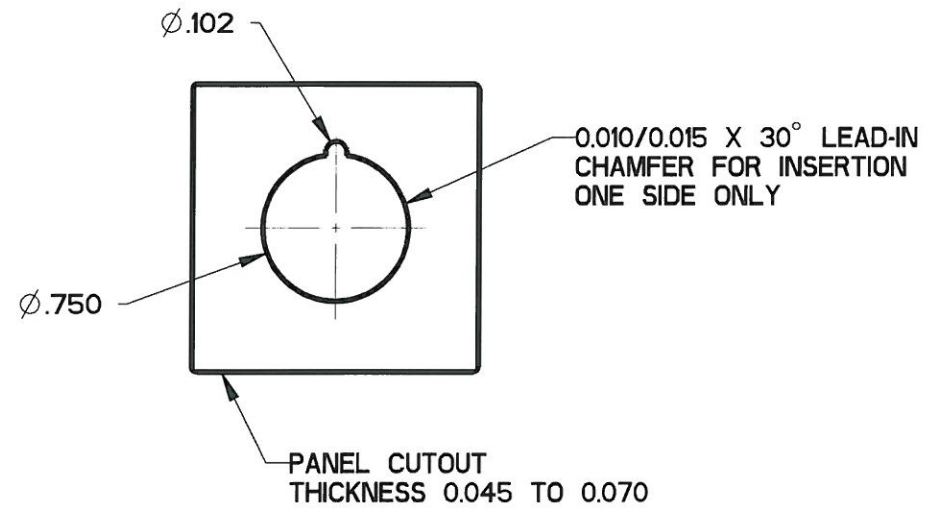
Tel: +86-755-8981 8866 Fax: +86-755-8427 6832

Email & Skype: info@chipsmall.com Web: www.chipsmall.com

Address: A1208, Overseas Decoration Building, #122 Zhenhua RD., Futian, Shenzhen, China



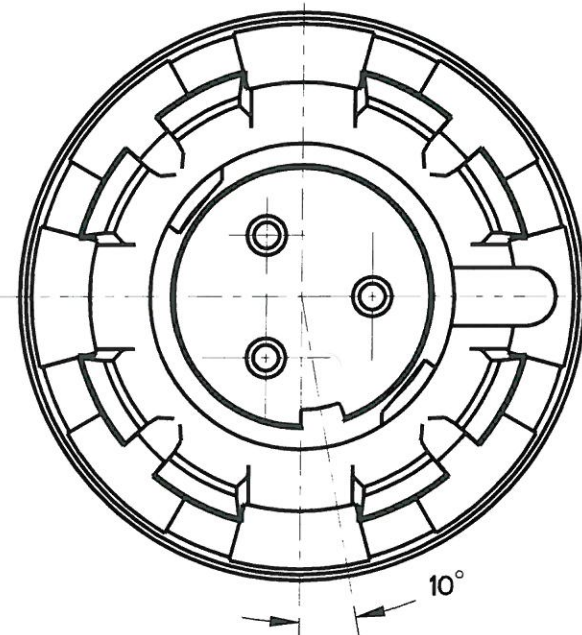
REV	ECN	APP'D
A	6351	JT 09/11/09
B	6473	JT 2/8/10
C	6573	<i>[Signature]</i> 2/8/30/10



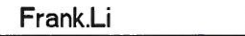



NOTES:

- 1. MATERIALS:**
HOUSING: PA6/6
CONTACT RETAINER: STAINLESS STEEL
GROMMET: SILICONE RUBBER PER A-A-59588
- 2. MATING CONTACT: SEE TABLE I**
- 3. TEST SPECIFICATION: BACC63EF**
- 4. PART MATES WITH SJS830310**
- 5. WEIGHT: 3.3 GRAMS**
- 6. SUPPLIED WITH DUST CAP**

APCD P/N	BOEING P/N	P/N MARKING(S)	CONTACTS SUPPLIED
SJS830320	BACC63EFA-03PNH	BACC63EFA-03PN	NONE
SJS830321	BACC63EFA-03PN	SJS830320	(3) M39029/58-364



DIMENSIONS ANSI Y14.5M UNITS: INCHES Pro/E FILE		TOLERANCES .XX ±0.01 .XXX ±0.005 ANGLES ±1.0°		PROJECTION 		Amphenol Pcd <i>SPECIFICATION DRAWING</i>		TITLE BACC63EFA-03PN 3P SZ16 PANEL WHITE RECEPTACLE FOR SJS			
ENGR Frank.Li 19-Mar-09											
ORIGINAL 		THIS DOCUMENT CONTAINS PROPRIETARY INFORMATION WHICH IS THE CONFIDENTIAL PROPERTY OF AMPHENOL PCD INC., BEVERLY, MA		CHKD  8/30/10		SIZE B		DWG NO. SJS830320_CE		REV C	
				APPD  8/30/10		CODE: 58982		SCALE: 3:1		SHEET 1 OF 1	