



Chipsmall Limited consists of a professional team with an average of over 10 year of expertise in the distribution of electronic components. Based in Hongkong, we have already established firm and mutual-benefit business relationships with customers from,Europe,America and south Asia,supplying obsolete and hard-to-find components to meet their specific needs.

With the principle of "Quality Parts,Customers Priority,Honest Operation,and Considerate Service",our business mainly focus on the distribution of electronic components. Line cards we deal with include Microchip,ALPS,ROHM,Xilinx,Pulse,ON,Everlight and Freescale. Main products comprise IC,Modules,Potentiometer,IC Socket,Relay,Connector.Our parts cover such applications as commercial,industrial, and automotives areas.

We are looking forward to setting up business relationship with you and hope to provide you with the best service and solution. Let us make a better world for our industry!



Contact us

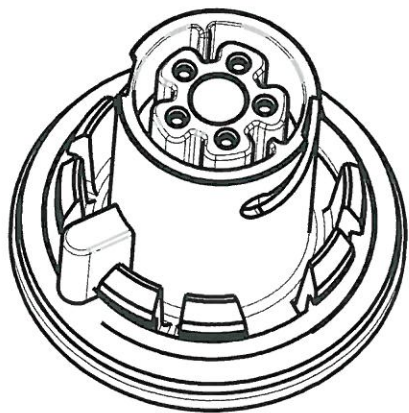
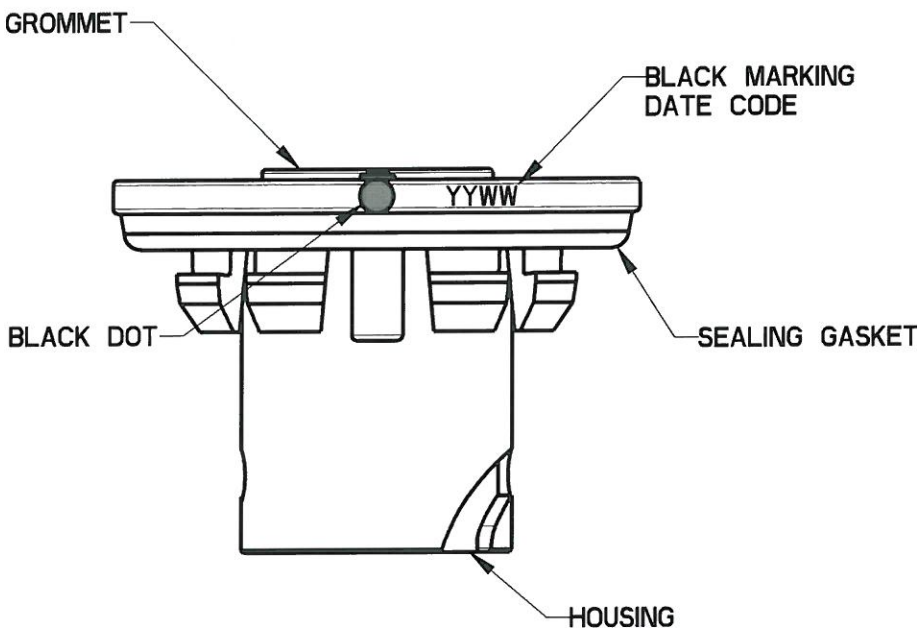
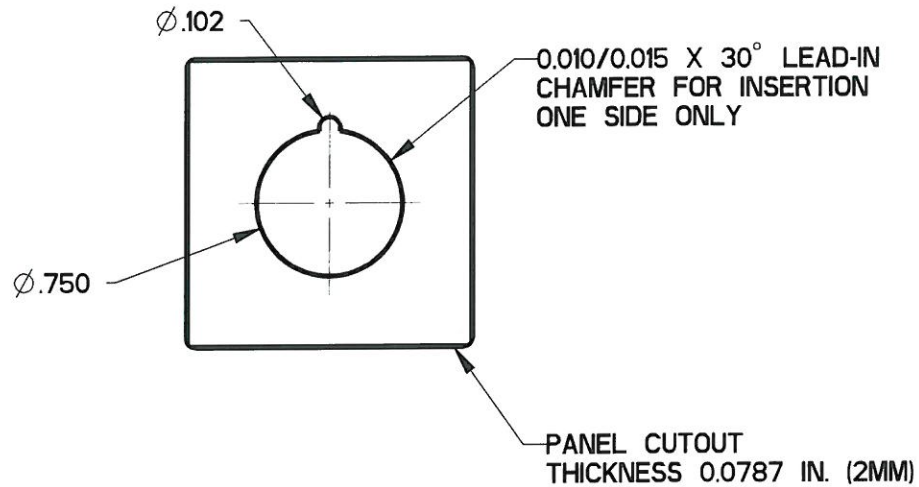
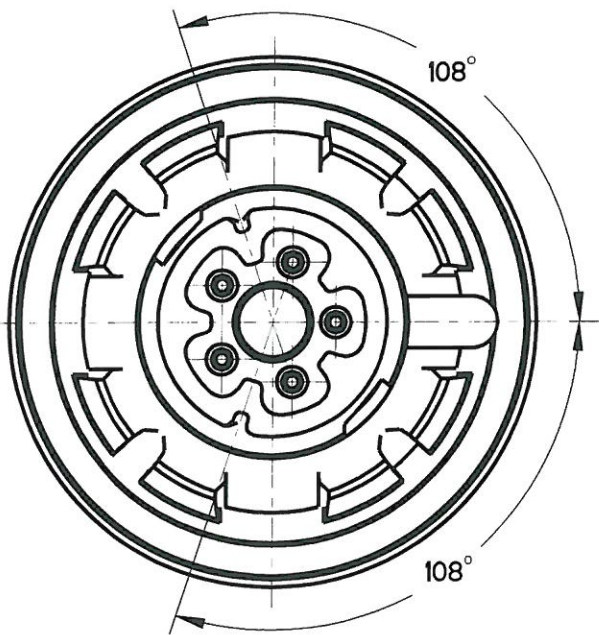
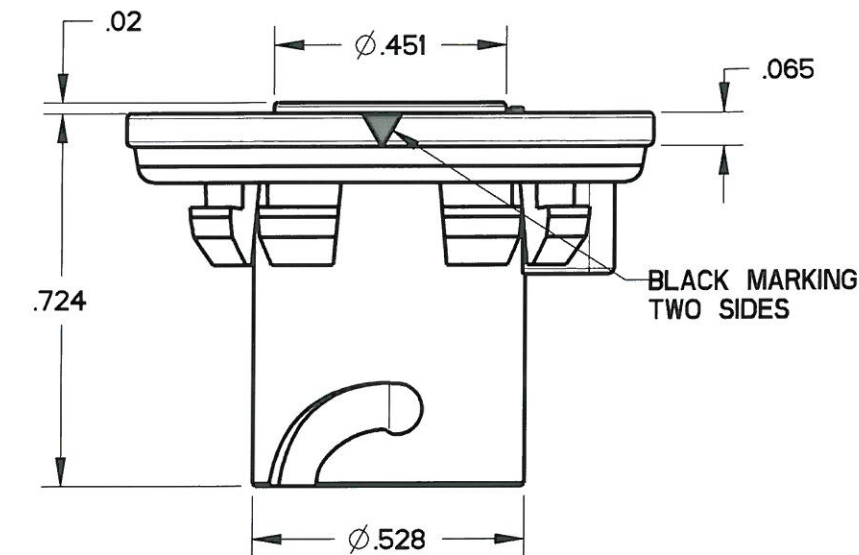
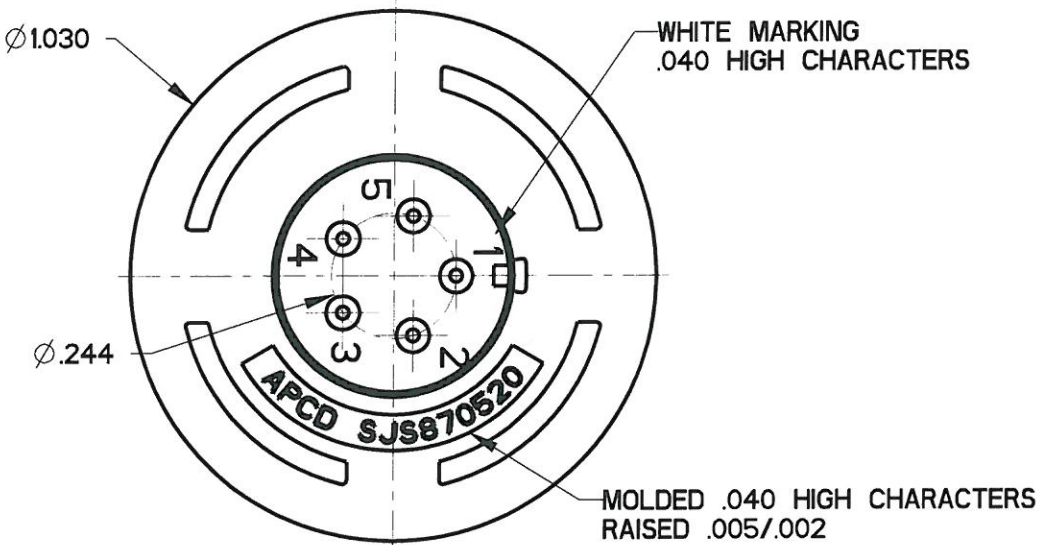
Tel: +86-755-8981 8866 Fax: +86-755-8427 6832

Email & Skype: info@chipsmall.com Web: www.chipsmall.com

Address: A1208, Overseas Decoration Building, #122 Zhenhua RD., Futian, Shenzhen, China



REV	ECN	APP'D
-	6598	<i>[Signature]</i>



SCALE 2:1

- NOTES:
1. MATERIALS:
HOUSING: PA6/6, COLOR: WHITE
CONTACT RETAINER: STAINLESS STEEL
GROMMET AND SEALING GASKET: SILICONE RUBBER PER A-A-59588, COLOR: RED
 2. ACCEPTS M39029/57-354 SOCKET CONTACTS (NOT INCLUDED)
 3. PART MATES WITH SJS870510
 4. WEIGHT: 3.8 GRAMS (EST.)
 5. SUPPLIED WITH DUST CAP

DIMENSIONS ANSI Y14.5M UNITS: INCHES Pro/E FILE	TOLERANCES .XX ±0.01 .XXX ±0.005 ANGLES ±1.0°	PROJECTION 	<div>Amphenol Pcd</div> <div>SPECIFICATION DRAWING</div> <div>ENGR Frank.Li 27-May-10</div>	TITLE 5P SZ22 PANEL WHITE RECEPTACLE FOR SJS				
<div>ORIGINAL</div>	THIS DOCUMENT CONTAINS PROPRIETARY INFORMATION WHICH IS THE CONFIDENTIAL PROPERTY OF AMPHENOL PCD INC., BEVERLY, MA		<div>CHKD</div> <div>10/18/10</div>	SIZE B	DWG NO. SJS870520_CE	REV -		
			<div>APPD</div>	CODE: 58982	SCALE: 8:3	SHEET 1 OF 1		