



Chipsmall Limited consists of a professional team with an average of over 10 year of expertise in the distribution of electronic components. Based in Hongkong, we have already established firm and mutual-benefit business relationships with customers from,Europe,America and south Asia,supplying obsolete and hard-to-find components to meet their specific needs.

With the principle of “Quality Parts,Customers Priority,Honest Operation,and Considerate Service”,our business mainly focus on the distribution of electronic components. Line cards we deal with include Microchip,ALPS,ROHM,Xilinx,Pulse,ON,Everlight and Freescale. Main products comprise IC,Modules,Potentiometer,IC Socket,Relay,Connector.Our parts cover such applications as commercial,industrial, and automotives areas.

We are looking forward to setting up business relationship with you and hope to provide you with the best service and solution. Let us make a better world for our industry!



Contact us

Tel: +86-755-8981 8866 Fax: +86-755-8427 6832

Email & Skype: info@chipsmall.com Web: www.chipsmall.com

Address: A1208, Overseas Decoration Building, #122 Zhenhua RD., Futian, Shenzhen, China



General Specifications

Part Number: SK14DGMG01

Electrical Capacity (Resistive Load)

Logic Level: 0.4VA maximum @ 28V AC/DC maximum
(Applicable Range 0.1mA ~ 0.1A @ 20mV ~ 28V)

Other Ratings

Contact Resistance: 100 milliohms maximum
Insulation Resistance: 100 megohms minimum @ 500V DC
Dielectric Strength: 500V AC minimum between contacts for 1 minute minimum
Mechanical Life: 30,000 operations minimum
Electrical Life: 10,000 operations minimum
Static Capability: Withstands 15 kilovolts ESD
Nominal Operating Force: 0.02Nm (0.18 lb•in)
Contact Timing: Break-before-make
Angle of Throw: 45°

Materials & Finishes

Key: Brass alloy with bright nickel plating and ABS resin handle
Housing: Polyamide
Base: Glass fiber reinforced polyamide
Rotor: Glass fiber reinforced polyamide
Tumbler Plate: Brass
Movable Contacts: Beryllium copper with gold plating
Stationary Contacts: Brass with gold plating
Switch Terminals: Brass with gold plating

Environmental Data

Operating Temperature Range: -40°C through +85°C (-40°F through +185°F)
Humidity: 90 ~ 95% humidity for 240 hours @ 60°C (140°F)
Vibration: 10 ~ 55Hz with peak-to-peak amplitude of 1.5mm traversing the frequency range & returning in 1 minute; 3 right angled directions for 2 hours
Shock: 50G (490m/s²) acceleration (tested in 6 right angled directions, with 5 shocks in each direction)

PCB Processing

Soldering: Manual Soldering: lead-free, see profile below. Do not exceed these specifications.
Cleaning: Hand clean locally using alcohol based solution.

Solder Iron Tip Temperature	370°C
Time on Terminal	4 seconds
Cycles	2

Standards & Certifications

These devices have not been tested for UL recognition or CSA certification.
 These devices are designed for use in a low-voltage, low-current, logic-level circuit.
 When used as intended in a logic-level circuit, the results do not produce hazardous energy.



POLES, CIRCUITS & KEY-REMOVABLE POSITIONS

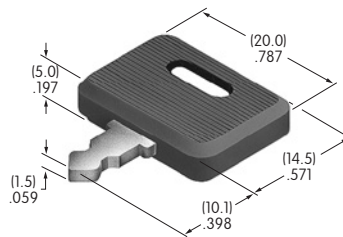
Pole & Throw	Key Positions			Connected Terminals (Terminal numbers are on switch)			Schematic	⊙ = Key Removable ✓ = Maximum Arc
	Pos 1	Pos 2	Pos 3	Pos 1	Pos 2	Pos 3		
SP3T	ON	ON	ON	C-1	C-2	C-3		

KEY

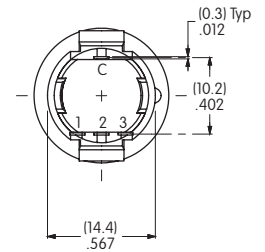
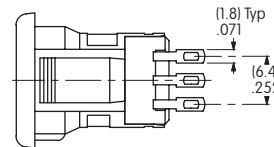
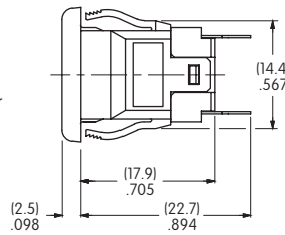
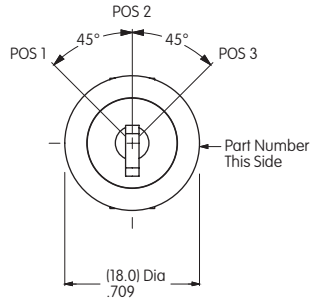
AT4080 Standard Antistatic Plastic Handle

Brass Alloy with Bright Nickel Plating & ABS Resin Handle

2 keys supplied with each switch



TYPICAL SWITCH DIMENSIONS



PANEL CUTOUT

Panel Thickness Range
.039" ~ .079"
(1.0mm ~ 2.0mm)

