



Chipsmall Limited consists of a professional team with an average of over 10 year of expertise in the distribution of electronic components. Based in Hongkong, we have already established firm and mutual-benefit business relationships with customers from,Europe,America and south Asia,supplying obsolete and hard-to-find components to meet their specific needs.

With the principle of “Quality Parts,Customers Priority,Honest Operation,and Considerate Service”,our business mainly focus on the distribution of electronic components. Line cards we deal with include Microchip,ALPS,ROHM,Xilinx,Pulse,ON,Everlight and Freescale. Main products comprise IC,Modules,Potentiometer,IC Socket,Relay,Connector.Our parts cover such applications as commercial,industrial, and automotives areas.

We are looking forward to setting up business relationship with you and hope to provide you with the best service and solution. Let us make a better world for our industry!



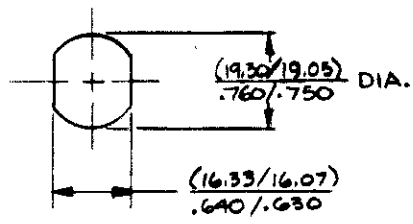
Contact us

Tel: +86-755-8981 8866 Fax: +86-755-8427 6832

Email & Skype: info@chipsmall.com Web: www.chipsmall.com

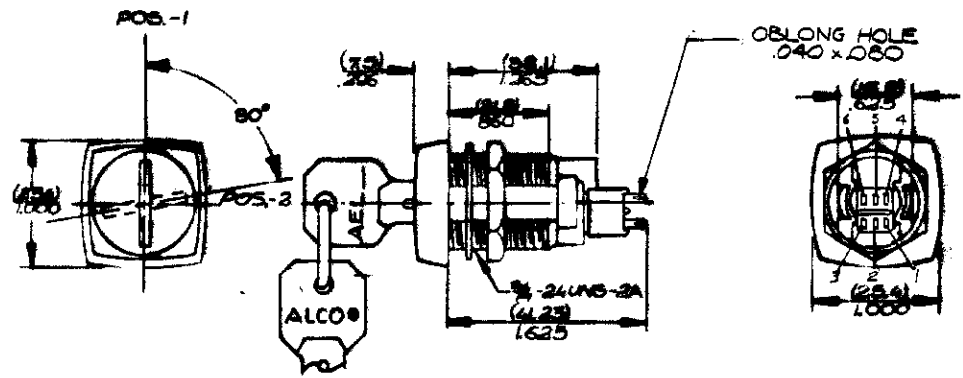
Address: A1208, Overseas Decoration Building, #122 Zhenhua RD., Futian, Shenzhen, China





PANEL CUTOUT

SPECIFICATIONS :
CONTACT RATING :
 SILVER - 3A @ 125 VAC OR 25 VDC (RESISTIVE)
 GOLD PLATING - 0.4 VA MAX @ 20 VDC OR PEAK AC
CONTACT RESISTANCE :
 SILVER - 10 MILLIOHMS MAX.
 GOLD PLATING - 20 MILLIOHMS MAX.
INSULATION RESISTANCE :
 SILVER - 1,000 MEGOHMS MIN.
 GOLD PLATING - 1,000 MEGOHMS MIN. @ 500 VDC
DIELECTRIC STRENGTH : 1,000 VOLTS RMS @ SEA LEVEL



(MM) ² REFERENCE: 80984 (HEX NUT)
 INCH

SKT-33-06	POSITION 1 AND 2	SOLD OVER NICKEL	2 TO 1 5 TO 4	2 TO 3 5 TO 6
SKT-33-12	POSITION 1 ONLY	SOLD OVER NICKEL	2 TO 1 5 TO 4	2 TO 3 5 TO 6
SKT-33-2	POSITION 1 AND 2	SOLID SILVER	2 TO 1 5 TO 4	2 TO 3 5 TO 6
SKT-33-1	POSITION 1 ONLY	SOLID SILVER	2 TO 1 5 TO 4	2 TO 3 5 TO 6
MODEL NO. (*)	REMOVE KEY INS.	SWITCH CONTACTS	POS. 1	POS. 2
TERMINAL DESIGNATION NUMBERS ARE FOR REFERENCE ONLY, AND DO NOT APPEAR ON SWITCHES				

2	ECD 4195	MM	1-10-92	1/14/92	±.010 INCH ±.025 MM ± 5° ANGLE	DIMENSIONS IN	DO NOT SCALE DRAWING	TITLE	KEYLOCK SWITCH	
B	ECO # 2024			7/24/81	DRAWN B. BUCKHET 5/6/81	MATERIAL	SCALE	SKT-33-(*) SERIES		
A	ECO # 1603	E.C.		10/1/81	CHECKED	FINISH	1/1	ALCO ELECTRONIC PRODUCTS, INC.		DWG. NO.
REV.	DESCRIPTION		DATE	APPROVED R. Deibel 9/7/81		North Andover, Massachusetts 01845		40063	SHEET OF	REV. OF