



Chipsmall Limited consists of a professional team with an average of over 10 year of expertise in the distribution of electronic components. Based in Hongkong, we have already established firm and mutual-benefit business relationships with customers from,Europe,America and south Asia,supplying obsolete and hard-to-find components to meet their specific needs.

With the principle of “Quality Parts,Customers Priority,Honest Operation,and Considerate Service”,our business mainly focus on the distribution of electronic components. Line cards we deal with include Microchip,ALPS,ROHM,Xilinx,Pulse,ON,Everlight and Freescale. Main products comprise IC,Modules,Potentiometer,IC Socket,Relay,Connector.Our parts cover such applications as commercial,industrial, and automotives areas.

We are looking forward to setting up business relationship with you and hope to provide you with the best service and solution. Let us make a better world for our industry!



## Contact us

Tel: +86-755-8981 8866 Fax: +86-755-8427 6832

Email & Skype: info@chipsmall.com Web: www.chipsmall.com

Address: A1208, Overseas Decoration Building, #122 Zhenhua RD., Futian, Shenzhen, China



# SNAP Link

## Serial Wireless Adapter



### Replaces Cables in a SNAP!

The **SNAP® Link™** family of robust, mesh networking, serial wireless adapters makes it easy and quick to connect RS-232 and RS-485/422 devices, increasing distance beyond physical wire constraints while reducing installation and on-going maintenance cost and line noise problems.

Compared to other serial wireless adapters, SNAP Link adapters provide the highest performance, longest distance and quickest configuration in the industry.

Now, linking two (or more) physical serial ports or devices is a SNAP. Just connect each device to one of the SNAP Link adapters, press the Mode button to automatically pair them together, and you're done.

Units are powered by USB or an external AC adapter, included with the product.



### Benefits:

- Longest Distance in the Industry
- Most Reliable, Robust Mesh Network
- Easiest Setup
- BEST VALUE

#### Two Form Factors available:

[SNAP Link RS-232 \(external antenna\)](#)

[SNAP Link RS-485/422 \(external antenna\)](#)

Models Available with AES-128 encryption for added security.

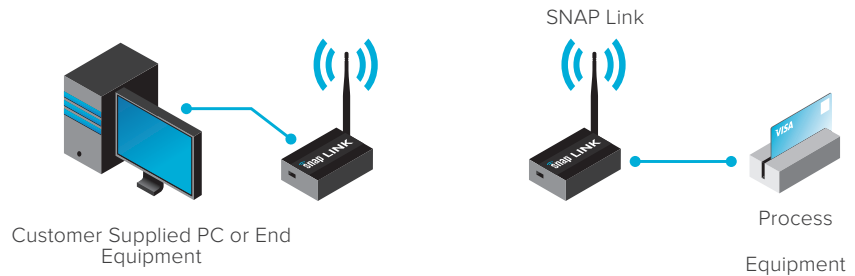
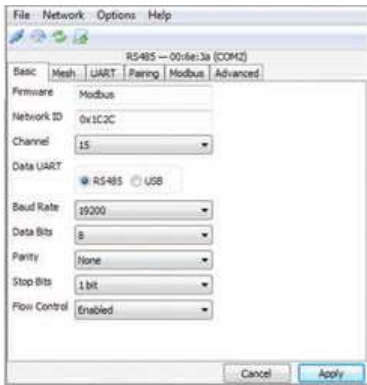
### Features

- SNAP — an Instant-On, Self-Healing Mesh Network
- RS-232 version has a DB-9 port with full hardware flow control
- RS-485/422 supports two & four wire, half & full duplex
- Spread Spectrum (DSSS) technology overcomes noisy environments
- Supports wireless ModBus
- LEDs show signal strength & data transmission activity
- Supports 1-to-1 and 1-to-Many Relationship Configurations
- -40° to 85° C Operating Temperature, Industrial Use
- No change to existing equipment
- RP-SMA antenna connection
- Micro-B USB port for easy connection to PCs (no adapter required)

To learn more, visit [synapse-wireless.com](http://synapse-wireless.com) or call 877-982-7888



**PC or Laptop using a pair of SNAP Link RS-232 or RS-485/422 wireless adapters to replace a cable, up to 3 miles (LoS).**



The SNAP Link EasySet software applet is an easy-to-use configuration tool that streamlines the setup and configuration of SNAP Link wireless adapters. SNAP Link EasySet provides visual indicators and easy-to-change configuration parameters such as baud rate, channel and network ID, data bits, parity, stop bits, flow control and more. SNAP Link EasySet is a visually intuitive tool for defining and configuring the SNAP Link products.

**One SNAP Link Adaptor controls multiple SNAP Link serial wireless adapters (either RS-232 or RS-485/422).**

