



Chipsmall Limited consists of a professional team with an average of over 10 year of expertise in the distribution of electronic components. Based in Hongkong, we have already established firm and mutual-benefit business relationships with customers from,Europe,America and south Asia,supplying obsolete and hard-to-find components to meet their specific needs.

With the principle of “Quality Parts,Customers Priority,Honest Operation,and Considerate Service”,our business mainly focus on the distribution of electronic components. Line cards we deal with include Microchip,ALPS,ROHM,Xilinx,Pulse,ON,Everlight and Freescale. Main products comprise IC,Modules,Potentiometer,IC Socket,Relay,Connector.Our parts cover such applications as commercial,industrial, and automotives areas.

We are looking forward to setting up business relationship with you and hope to provide you with the best service and solution. Let us make a better world for our industry!



## Contact us

Tel: +86-755-8981 8866 Fax: +86-755-8427 6832

Email & Skype: info@chipsmall.com Web: www.chipsmall.com

Address: A1208, Overseas Decoration Building, #122 Zhenhua RD., Futian, Shenzhen, China



# SLA215K



RoHS Compliant



## High Current Power Rocker Switches

UL CSA ENEC

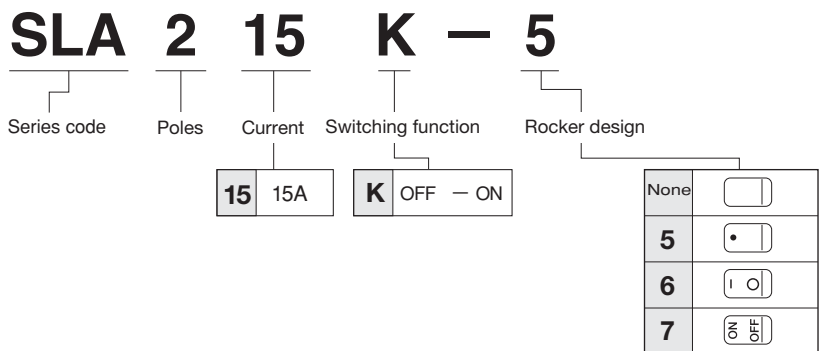
### Features

1. High capacity of 15 A is realized with a compact body.
2. The reinforced insulation structure realized by adoption of a resin frame ensures use without anxiety.
3. Easy snap-in panel mounting
4. The switch is structured so that the use of the soldering terminals and the TAB receptacle (#187) can be chosen.
5. Best suited for use with the power supply of high-capacity equipment.  
The RoHS compliance design realized cadmium- and lead-free products.
6. **UL**, **CSA** and **ENEC** approved products.  
\*No ENEC-approved product is available for the tab terminal type.

### Specifications

|                             |                        |                             |
|-----------------------------|------------------------|-----------------------------|
| Rating                      | Resistive load         | 15A 125V AC 15A 250V AC     |
|                             | Inductive load         | 36A/15Ap.f.=0.6/0.9 250V AC |
|                             | Min.rating             | 100mA 5V AC/DC              |
| Initial contact resistance  | 20mΩ max. (1A 2~4V DC) |                             |
| Dielectric strength         | 1,500V AC 1 minute     |                             |
| Insulation resistance       | 100MΩ min. (500V DC)   |                             |
| Electrical life(cycles)     | 10,000 cycles          |                             |
| Operating force             | 2.94~12.74N            |                             |
| Operating temperature range | -25~+85°C              |                             |
| Storage temperature range   | -40~+85°C              |                             |

### Part Numbering



### Table of Part Numbers

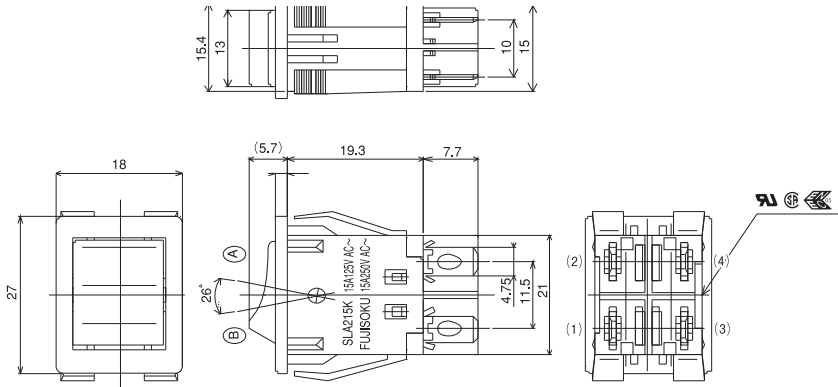
| TYPE                  | ★SLA215K  | SLA215K-5 | ★SLA215K-6 | ☆SLA215K-7 |
|-----------------------|-----------|-----------|------------|------------|
| MARKING COLOR (WHITE) |           |           |            |            |
|                       | UNFIGURED |           |            |            |

### Approvals

UL File No.E43275  
 CSA File No.LR38341  
 ENEC Ref. No. SE/05105-03

# SLA215K

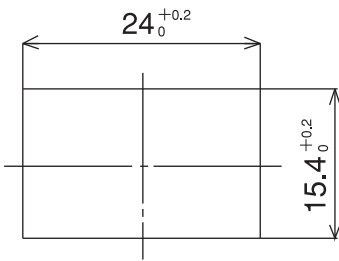
## Appearance style



| CIRCUIT CHARACTERISTICS  |                          |         |           |
|--------------------------|--------------------------|---------|-----------|
| CIRCUIT ARRANGEMENT      |                          | DIAGRAM | TERMINALS |
| WITH ROCKER TO SIDE OF A | WITH ROCKER TO SIDE OF B |         | 4         |
| OFF                      | ON                       |         |           |
| —                        | (1) — (2)<br>(3) — (4)   |         |           |

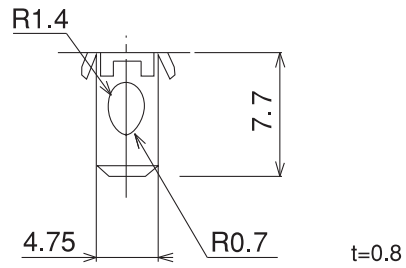
Terminal numbers are shown on the bottom of the switch.

## Panel Cut-Out Dimensions



PANEL THICKNESS : 1.0~3.5

## Terminal Style

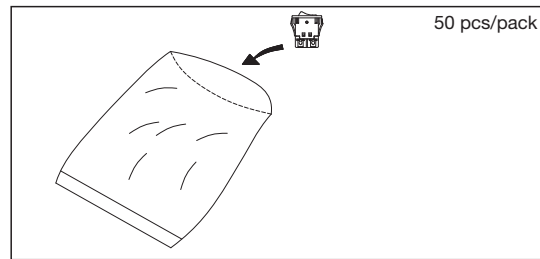


Solder Terminal (It can be used for TAB #187)

## Soldering Specifications

Manual Soldering  
 Device : Soldering iron  
 380°C, Max.; 3 seconds, Max.

## Packaging Specification



## Precautions for Panel Mounting

Applicable Series Products:  
 SLE6/10, SLE210K, SL10K, SLE10K and SLA215K

The edges on the back of the cut-out panel should be squared so that the switch box bites the panel firmly. When the panel is coated, pay attention that the coating will not retain around the edge. Do not reuse the switch that was once mounted on a panel.

