



Chipsmall Limited consists of a professional team with an average of over 10 year of expertise in the distribution of electronic components. Based in Hongkong, we have already established firm and mutual-benefit business relationships with customers from,Europe,America and south Asia,supplying obsolete and hard-to-find components to meet their specific needs.

With the principle of "Quality Parts,Customers Priority,Honest Operation,and Considerate Service",our business mainly focus on the distribution of electronic components. Line cards we deal with include Microchip,ALPS,ROHM,Xilinx,Pulse,ON,Everlight and Freescale. Main products comprise IC,Modules,Potentiometer,IC Socket,Relay,Connector.Our parts cover such applications as commercial,industrial, and automotives areas.

We are looking forward to setting up business relationship with you and hope to provide you with the best service and solution. Let us make a better world for our industry!



Contact us

Tel: +86-755-8981 8866 Fax: +86-755-8427 6832

Email & Skype: info@chipsmall.com Web: www.chipsmall.com

Address: A1208, Overseas Decoration Building, #122 Zhenhua RD., Futian, Shenzhen, China

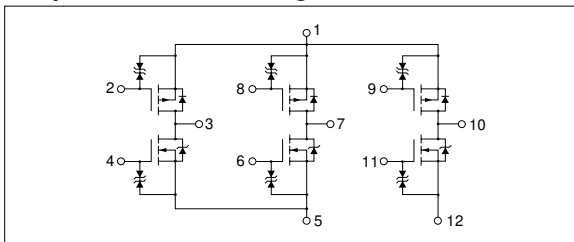


Absolute maximum ratings

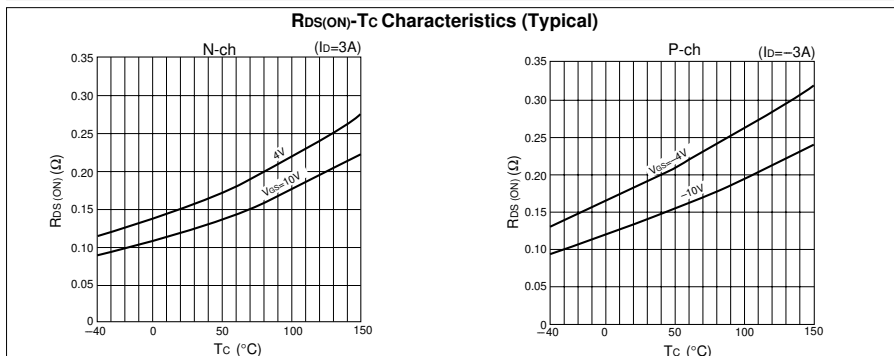
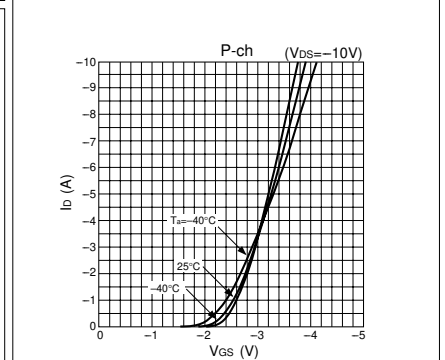
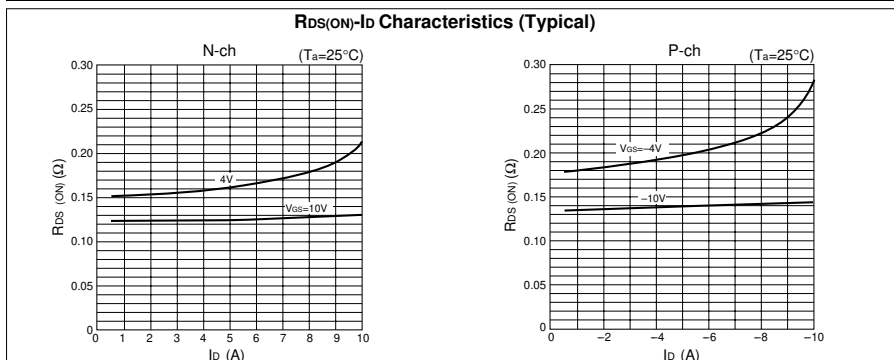
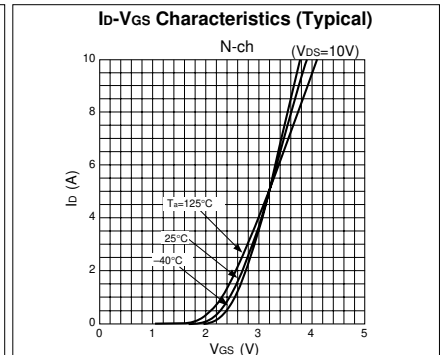
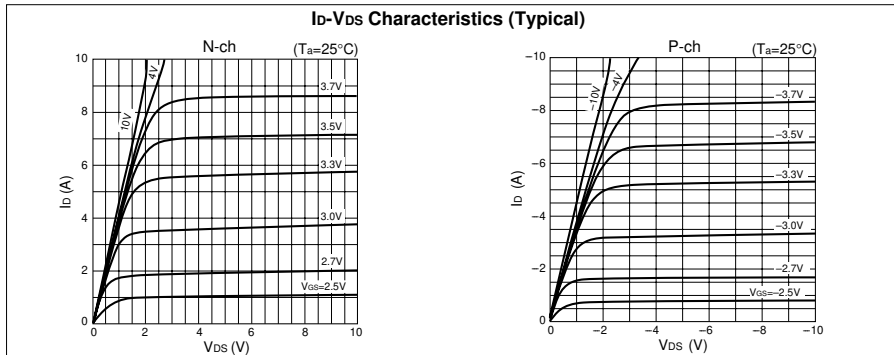
($T_a=25^\circ\text{C}$)

Symbol	Ratings		Unit
	N channel	P channel	
V_{DSS}	60	-60	V
V_{GSS}	± 20	± 20	V
I_D	6	-6	A
$I_D(\text{pulse})$	10 ($PW \leq 1\text{ms}$, $\text{duty} \leq 25\%$)	-10 ($PW \leq 1\text{ms}$, $\text{duty} \leq 25\%$)	A
P_T	5 ($T_a=25^\circ\text{C}$, with all circuits operating, without heatsink)		W
	35 ($T_c=25^\circ\text{C}$, with all circuits operating, with infinite heatsink)		W
θ_{j-a}	25 (Junction-Air, $T_a=25^\circ\text{C}$, with all circuits operating)		$^\circ\text{C/W}$
θ_{j-c}	3.57 (Junction-Case, $T_c=25^\circ\text{C}$, with all circuits operating)		$^\circ\text{C/W}$
V_{ISO}	1000 (Between fin and lead pin, AC)		Vrms
Tch	150		$^\circ\text{C}$
Tstg	-40 to +150		$^\circ\text{C}$

Equivalent circuit diagram



Characteristic curves



Electrical characteristics

(Ta=25°C)

Symbol	N channel					P channel				
	Specification			Unit	Conditions	Specification			Unit	Conditions
	min	typ	max			min	typ	max		
V(BR)DSS	60			V	ID=100μA, VGS=0V	-60			V	ID=-100μA, VGS=0V
IGSS			±10	μA	VGS=±20V			±10	μA	VGS=±20V
IDSS			100	μA	VDS=60V, VGS=0V			-100	μA	VDS=-60V, VGS=0V
VTH	1.0		2.0	V	VDS=10V, ID=250μA	-1.0		-2.0	V	VDS=-10V, ID=-250μA
Re(yfs)		5.5		S	VDS=10V, ID=3A		6		S	VDS=-10V, ID=-3A
RDS(ON)			0.22	Ω	VGS=4V, ID=3A			0.22	Ω	VGS=-10V, ID=-3A
Ciss		320		pF	VDS=10V, f=1.0MHz, VGS=0V			790	pF	VDS=-10V, f=1.0MHz, VGS=0V
Coss		160		pF				310	pF	
Crss		35		pF				90	pF	
td(on)		16		ns	ID=3A, VDD=20V, RL=6.67Ω, VGS=5V, see Fig. 3 on page 16.			40	ns	ID=-3A, VDD=20V, RL=6.67Ω, VGS=-5V, see Fig. 4 on page 16.
tr		65		ns				110	ns	
td(off)		70		ns				160	ns	
tf		45		ns				80	ns	
VSD		1.2		V		ISD=6A, VGS=0V		-1.1		
trr		65		ns	ISD=3A, VGS=0V, di/dt=100A/μs			85	ns	ISD=-3A, VGS=0V, di/dt=100A/μs

Characteristic curves

