



Chipsmall Limited consists of a professional team with an average of over 10 year of expertise in the distribution of electronic components. Based in Hongkong, we have already established firm and mutual-benefit business relationships with customers from,Europe,America and south Asia,supplying obsolete and hard-to-find components to meet their specific needs.

With the principle of “Quality Parts,Customers Priority,Honest Operation,and Considerate Service”,our business mainly focus on the distribution of electronic components. Line cards we deal with include Microchip,ALPS,ROHM,Xilinx,Pulse,ON,Everlight and Freescale. Main products comprise IC,Modules,Potentiometer,IC Socket,Relay,Connector.Our parts cover such applications as commercial,industrial, and automotives areas.

We are looking forward to setting up business relationship with you and hope to provide you with the best service and solution. Let us make a better world for our industry!



Contact us

Tel: +86-755-8981 8866 Fax: +86-755-8427 6832

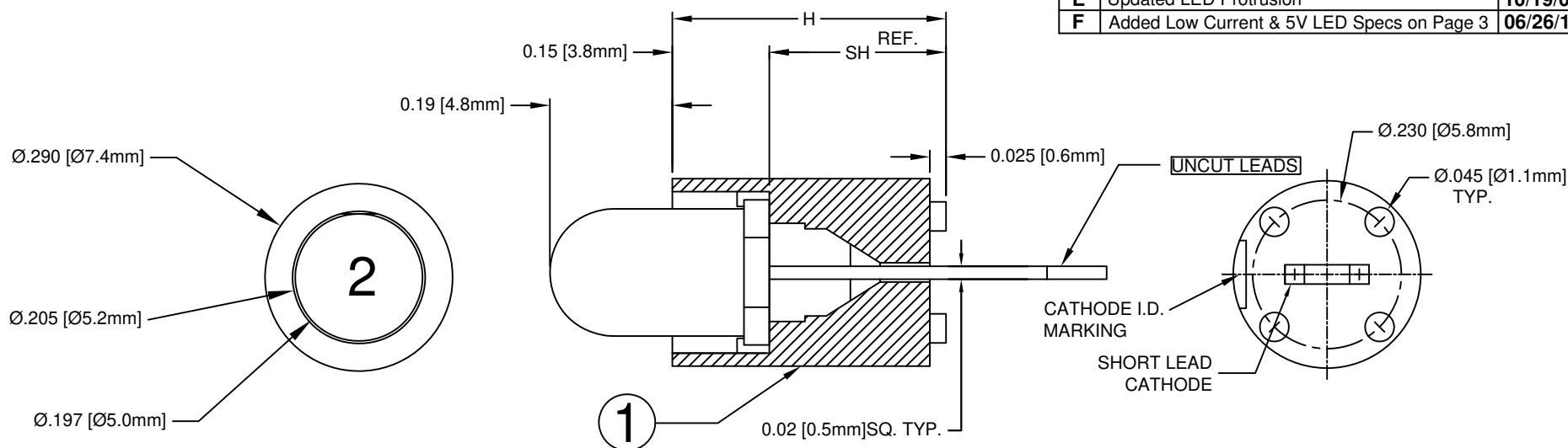
Email & Skype: info@chipsmall.com Web: www.chipsmall.com

Address: A1208, Overseas Decoration Building, #122 Zhenhua RD., Futian, Shenzhen, China



ITEM	QTY	PART NUMBER	PART DESCRIPTION
1	1	SLM-XXX	Molded Self-Retaining LED Mount
2	1	5XX-F	T1 3/4 (5mm) Flanged LED, See Page 2 & 3

REV.	DESCRIPTION	DATE	APPROVED
B	Updated Uncut Leads	06/06/08	M. C.
C	Updated Uncut Leads Note	12/24/08	T. Y.
D	Updated P/N's on Page 2	09/16/09	T. Y.
E	Updated LED Protrusion	10/19/09	T. Y.
F	Added Low Current & 5V LED Specs on Page 3	06/26/16	J. C.



PART NO.	SH (Ref.)	H
SLM-140	.140 (3.6mm)	.285 (7.1mm)
SLM-150	.150 (3.8mm)	.295 (7.2mm)
SLM-160	.160 (4.1mm)	.305 (7.7mm)
SLM-170	.170 (4.3mm)	.315 (8.0mm)
SLM-180	.180 (4.6mm)	.325 (8.3mm)
SLM-190	.190 (4.8mm)	.335 (8.5mm)
SLM-200	.200 (5.1mm)	.345 (8.8mm)
SLM-210	.210 (5.3mm)	.355 (9.0mm)
SLM-220	.220 (5.6mm)	.365 (9.3mm)
SLM-230	.230 (5.8mm)	.375 (9.5mm)
SLM-240	.240 (6.1mm)	.385 (9.8mm)
SLM-250	.250 (6.4mm)	.395 (10.0mm)
SLM-260	.260 (6.6mm)	.405 (10.3mm)
SLM-270	.270 (6.9mm)	.415 (10.5mm)

PART NO.	SH (Ref.)	H
SLM-280	.280 (7.1mm)	.425 (10.8mm)
SLM-290	.290 (7.4mm)	.435 (11.0mm)
SLM-300	.300 (7.6mm)	.445 (11.3mm)
SLM-310	.310 (7.9mm)	.455 (11.6mm)
SLM-320	.320 (8.1mm)	.465 (11.8mm)
SLM-330	.330 (8.4mm)	.475 (12.1mm)
SLM-340	.340 (8.6mm)	.485 (12.3mm)
SLM-350	.350 (8.9mm)	.495 (12.6mm)
SLM-360	.360 (9.1mm)	.505 (12.8mm)
SLM-370	.370 (9.4mm)	.515 (13.1mm)
SLM-380	.380 (9.7mm)	.525 (13.3mm)
SLM-390	.390 (9.9mm)	.535 (13.6mm)
SLM-400	.400 (10.2mm)	.545 (13.8mm)
SLM-410	.410 (10.4mm)	.555 (14.1mm)

PART NO.	SH (Ref.)	H
SLM-420	.420 (10.7mm)	.565 (14.3mm)
SLM-430	.430 (10.9mm)	.575 (14.6mm)
SLM-440	.440 (11.2mm)	.585 (14.9mm)
SLM-450	.450 (11.4mm)	.595 (15.1mm)
SLM-470	.470 (11.9mm)	.615 (15.6mm)
SLM-490	.490 (12.4mm)	.635 (16.1mm)
SLM-510	.510 (13.0mm)	.655 (16.6mm)
SLM-530	.530 (13.5mm)	.675 (17.1mm)
SLM-550	.550 (13.8mm)	.695 (17.5mm)
SLM-570	.570 (14.5mm)	.715 (18.2mm)
SLM-590	.590 (15.0mm)	.735 (18.6mm)
SLM-610	.610 (15.5mm)	.755 (19.2mm)
SLM-630	.630 (16.0mm)	.775 (19.7mm)
SLM-650	.650 (16.5mm)	.795 (20.2mm)

PART NO.	SH (Ref.)	H
SLM-670	.670 (17.0mm)	.815 (20.7mm)
SLM-690	.690 (17.5mm)	.835 (21.2mm)
SLM-710	.710 (18.0mm)	.855 (21.7mm)
SLM-730	.730 (18.5mm)	.875 (22.2mm)
SLM-750	.750 (19.1mm)	.895 (22.7mm)
SLM-770	.770 (19.6mm)	.915 (23.2mm)
SLM-790	.790 (20.1mm)	.935 (23.7mm)
SLM-810	.810 (20.6mm)	.955 (24.3mm)
SLM-830	.830 (21.1mm)	.975 (24.8mm)
SLM-850	.850 (21.6mm)	.995 (25.3mm)
SLM-870	.870 (22.1mm)	1.015 (25.8mm)
SLM-890	.890 (22.6mm)	1.035 (26.3mm)

ABSOLUTE MAXIMUM RATINGS (Ta = 25°C)

REVERSE VOLTAGE	_____	5V
REVERSE CURRENT (VR=5V)	_____	100µA
OPERATING TEMPERATURE RANGE	_____	-25°C ~ 85°C
STORAGE TEMPERATURE	_____	-30°C ~ 100°C
LEAD SOLDERING TEMPERATURE (1/16" FROM BODY)	_____	260°C for 5 Seconds

STANDARD TOLERANCE (UNLESS OTHERWISE SPECIFIED)	
DECIMALS	ANGULAR
.X ± .1	X° ± 1°
.XX ± .02	
.XXX ± .010	
DESIGNED: D. Beckman	DATE: 06/14/07
CHECKED: T. Yin	DATE: 06/14/07

BIVAR®

4 THOMAS, IRVINE, CA. 92618
TEL: (949) 951-8808 FAX: (949) 951-3974

TITLE: MOLDED, SELF-RETAINING
T-1 3/4 (5mm) LED MOUNT ASSEMBLY


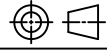
PART NO: SLMXXX5XXX REVISION: F

CAGE CODE : 32559 SHEET # 1 OF 3

CAD GENERATED DOCUMENT. DO NOT MEASURE DRAWING.

REV.	DESCRIPTION	DATE	APPROVED
	SEE SHEET #1		


Assy Part No.	Chip			Lens Appearance	Electro-Optical Data			Viewing Angle 2 θ ½ (Deg)	LED Part No.
	Material	Peak Wave Length λp(nm)	Emitted Color		Vf (V)		Iv (mcd)		
					TYP	MAX	TYP		
STANDARD					Data @ 20mA				
SLMXXX5BWC	GaN/SiC	430	BLUE	WATER CLEAR	4.0	4.5	30	25	5BWC-F
SLMXXX5BWD	GaN/SiC	430	BLUE	DIFFUSED	4.0	4.5	15	40	5BWD-F
SLMXXX5BWT	GaN/SiC	430	BLUE	TINTED	4.0	4.5	30	25	5BWT-F
SLMXXX5PGC	GaP/GaP	555	PURE GREEN	WATER CLEAR	2.2	2.8	10	35	5PGC-F
SLMXXX5PGD	GaP/GaP	555	PURE GREEN	DIFFUSED	2.2	2.8	10	40	5PGD-F
SLMXXX5PGT	GaP/GaP	555	PURE GREEN	TINTED	2.2	2.8	10	35	5PGT-F
SLMXXX5GC	GaP/GaP	568	GREEN	WATER CLEAR	2.1	2.8	40	35	5GC-F
SLMXXX5GD	GaP/GaP	568	GREEN	DIFFUSED	2.1	2.8	25	40	5GD-F
SLMXXX5GT	GaP/GaP	568	GREEN	TINTED	2.1	2.8	40	35	5GT-F
SLMXXX5YC	GaAsP/GaP	590	YELLOW	WATER CLEAR	2.0	2.8	40	35	5YC-F
SLMXXX5YD	GaAsP/GaP	590	YELLOW	DIFFUSED	2.0	2.8	25	40	5YD-F
SLMXXX5YT	GaAsP/GaP	590	YELLOW	TINTED	2.0	2.8	40	35	5YT-F
SLMXXX5HC	GaAsP/GaP	625	HE RED	WATER CLEAR	2.0	2.8	50	35	5HC-F
SLMXXX5HD	GaAsP/GaP	625	HE RED	DIFFUSED	2.0	2.8	40	40	5HD-F
SLMXXX5HT	GaAsP/GaP	625	HE RED	TINTED	2.0	2.8	50	35	5HT-F
SLMXXX5RC	GaP/GaP	700	RED	WATER CLEAR	2.1	2.8	2	35	5RC-F
SLMXXX5RD	GaP/GaP	700	RED	DIFFUSED	2.1	2.8	1.5	40	5RD-F
SLMXXX5RT	GaP/GaP	700	RED	TINTED	2.1	2.8	2	35	5RT-F

STANDARD TOLERANCE (UNLESS OTHERWISE SPECIFIED) ±10% ALL VALUES ANGULAR		 BIVAR [®] 4 THOMAS, IRVINE, CA. 92618 TEL: (949) 951-8808 FAX: (949) 951-3974	
			
DESIGNED: D. Beckman	DATE: 06/14/07	PART NO: SLMXXX5XXX	
CHECKED: T. Yin	DATE: 06/14/07	CAGE CODE : 32559	SHEET # 2 OF 3
CAD GENERATED DOCUMENT. DO NOT MEASURE DRAWING.			

REV.	DESCRIPTION	DATE	APPROVED
	SEE SHEET #1		

Assy Part No.	Chip			Lens Appearance	Electro-Optical Data			Viewing Angle 2 θ 1/2 (Deg)	LED Part No.
	Material	Peak Wave Length λ_p (nm)	Emitted Color		Vf (V)		Iv (m cd)		
					TYP	MAX	TYP		
LOW CURRENT					Data @ 2m A				
SLMXXX5BWDL	GaN/SiC	430	BLUE	DIFFUSED	3.8	4.2	4	40	5BWDL-F
SLMXXX5GDL	GaP/GaP	568	GREEN	DIFFUSED	2.1	2.6	4	40	5GDL-F
SLMXXX5YDL	GaAsP/GaP	590	YELLOW	DIFFUSED	2.0	2.6	4	40	5YDL-F
SLMXXX5ADL	GaAsP/GaP	605	AMBER	DIFFUSED	2.0	2.6	4	40	5ADL-F
SLMXXX5HDL	GaAsP/GaP	625	HE RED	DIFFUSED	2.0	2.6	5	40	5HDL-F
SLMXXX5SRDL	GaAlAs/GaAs	645	RED	DIFFUSED	1.7	2.3	6	40	5SRDL-F

Assy Part No.	Chip			Lens Appearance	Electro-Optical Data			Viewing Angle 2 θ 1/2 (Deg)	LED Part No.
	Material	Peak Wave Length λ_p (nm)	Emitted Color		Vf (V)		Iv (m cd)		
					TYP	MAX	TYP		
5 VOLT					Data @ 5V				
SLMXXX5BWD5V	GaN/SiC	430	BLUE	DIFFUSED	-	5.0	15	40	5BWD5V-F
SLMXXX5GD5V	GaP/GaP	568	GREEN	DIFFUSED	-	5.0	25	40	5GD5V-F
SLMXXX5YD5V	GaAsP/GaP	590	YELLOW	DIFFUSED	-	5.0	25	40	5YD5V-F
SLMXXX5AD5V	GaAsP/GaP	605	AMBER	DIFFUSED	-	5.0	25	40	5AD5V-F
SLMXXX5HD5V	GaAsP/GaP	625	HE RED	DIFFUSED	-	5.0	30	40	5HD5V-F
SLMXXX5RD5V	GaP/GaP	700	RED	DIFFUSED	-	5.0	1.5	40	5RD5V-F

STANDARD TOLERANCE (UNLESS OTHERWISE SPECIFIED) \pm 10% ALL VALUES ANGULAR		 4 THOMAS, IRVINE, CA. 92618 TEL: (949) 951-8808 FAX: (949) 951-3974	
DESIGNED: D. Beckman			
CHECKED: T. Yin		DATE: 06/14/07	TITLE: MOLDED, SELF-RETAINING T-1 3/4 (5mm) LED MOUNT ASSEMBLY PART NO: SLMXXX5XXX REVISION: F CAGE CODE : 32559 SHEET # 3 OF 3 <small>CAD GENERATED DOCUMENT. DO NOT MEASURE DRAWING.</small>