



Chipsmall Limited consists of a professional team with an average of over 10 year of expertise in the distribution of electronic components. Based in Hongkong, we have already established firm and mutual-benefit business relationships with customers from,Europe,America and south Asia,supplying obsolete and hard-to-find components to meet their specific needs.

With the principle of "Quality Parts,Customers Priority,Honest Operation,and Considerate Service",our business mainly focus on the distribution of electronic components. Line cards we deal with include Microchip,ALPS,ROHM,Xilinx,Pulse,ON,Everlight and Freescale. Main products comprise IC,Modules,Potentiometer,IC Socket,Relay,Connector.Our parts cover such applications as commercial,industrial, and automotives areas.

We are looking forward to setting up business relationship with you and hope to provide you with the best service and solution. Let us make a better world for our industry!



Contact us

Tel: +86-755-8981 8866 Fax: +86-755-8427 6832

Email & Skype: info@chipsmall.com Web: www.chipsmall.com

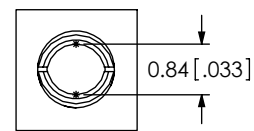
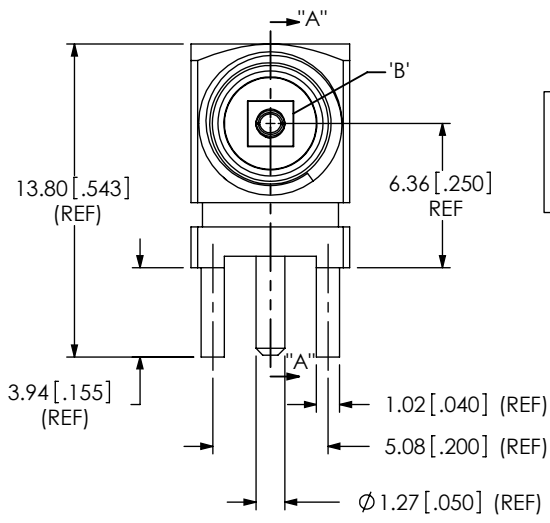
Address: A1208, Overseas Decoration Building, #122 Zhenhua RD., Futian, Shenzhen, China



DO NOT SCALE FROM THIS PRINT

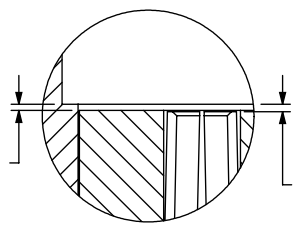
DESIGNED & DIMENSIONED IN MILLIMETERS [INCHES]

SMA-J-P-X-RA-TH1



DETAIL 'B' SCALE 8:1

0.10±0.10 [.004±.0039] TO INSULATOR



DETAIL 'C' SCALE 8:1

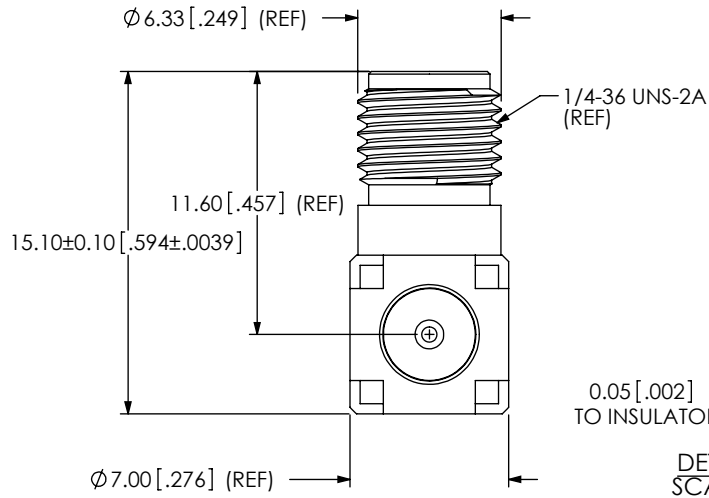
GENDER
-J: JACK

TYPE
-P: PCB

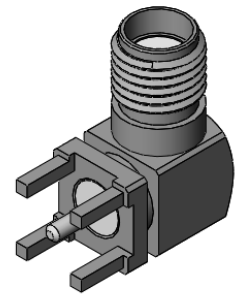
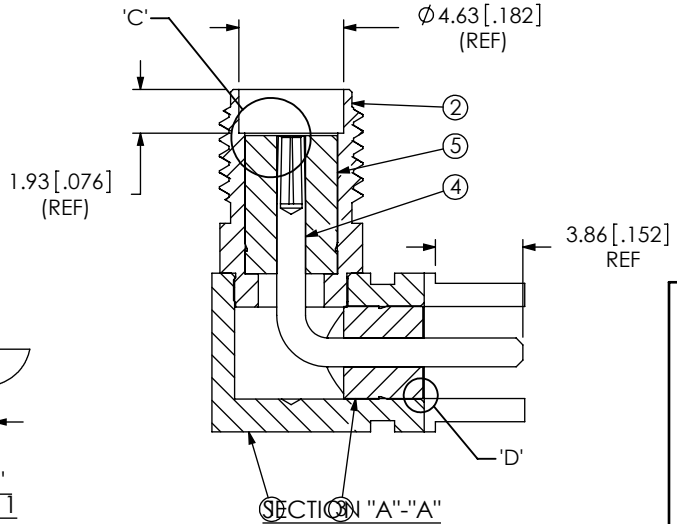
TERMINATION
-TH1: THROUGH HOLE

ORIENTATION
-RA: RIGHT ANGLE

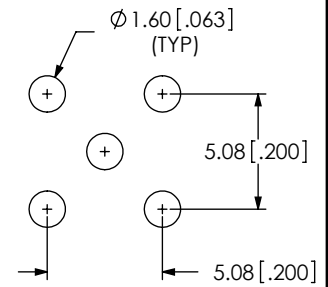
PLATING SPECIFICATION
-H: 30µ" GOLD CENTER CONTACT,
3µ" GOLD OUTER CONTACT
(SEE TABLE 1)



DETAIL 'D' SCALE 8:1



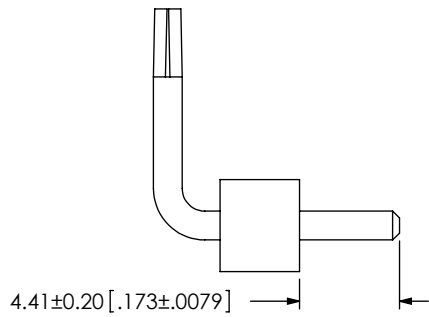
RECOMMENDED PCB LAYOUT



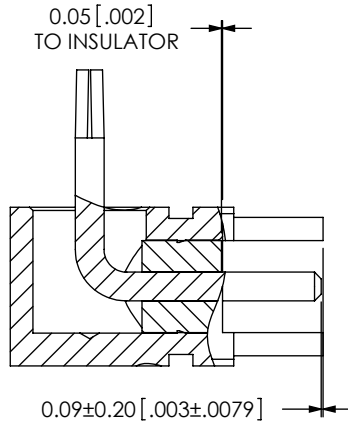
ITEM	COMPONENT	-H
1	BODY	SMA-J-P-F-RA-TH1-BDY
2	SHELL	SMA-J-P-F-RA-TH1-SHL
3	INSULATOR 1	SMA-INS-009
4	SOCKET	SMA-J-P-H-RA-TH1-SKT
5	INSULATOR 2	SMA-INS-005

- NOTES:
- ⊕ REPRESENTS A CRITICAL DIMENSION.
 - PUSHOUT FORCE FOR INSULATOR: 44.48 N [10 LB] MIN.
 - SEE CO-HD-WI-3040-M RF PACKAGING FOR PACKAGING INSTRUCTIONS. USE SAMTEC TRAY TY-SMA001-1 AND TY-SMA001-2. QUANTITIES LESS THAN A FULL TRAY WILL NOT BE PACKAGED IN TRAYS.
 - NOTE DELETED.

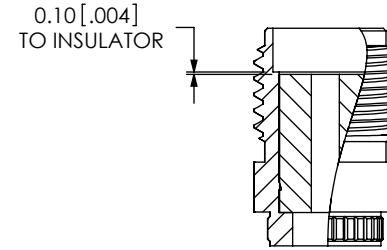
UNLESS OTHERWISE SPECIFIED, DIMENSIONS ARE IN MILLIMETERS. TOLERANCES ARE: DECIMALS ANGLES .X: ±0.3 [.01] 5° .XX: ±0.13 [.005] .XXX: ±0.051 [.0020]	PROPRIETARY NOTE THIS DOCUMENT CONTAINS INFORMATION CONFIDENTIAL AND PROPRIETARY TO SAMTEC, INC. AND SHALL NOT BE REPRODUCED OR TRANSFERRED TO OTHER DOCUMENTS OR DISCLOSED TO OTHERS OR USED FOR ANY PURPOSE OTHER THAN THAT WHICH IT WAS OBTAINED WITHOUT THE EXPRESSED WRITTEN CONSENT OF SAMTEC, INC.		
		520 PARK EAST BLVD, NEW ALBANY, IN 47150 PHONE: 812-944-6733 FAX: 812-948-5047 e-Mail: info@SAMTEC.com code: 55322	
MATERIAL: DO NOT SCALE DRAWING SHEET SCALE: 3:1		DESCRIPTION: SMA RIGHT ANGLE, JACK- 50 OHM	
SHELL, BODY: BRASS INSULATOR: PTFE SOCKET: BeCu		DWG. NO. SMA-J-P-X-RA-TH1	
		BY: R MUSSER 01/28/2008 SHEET 1 OF 2	



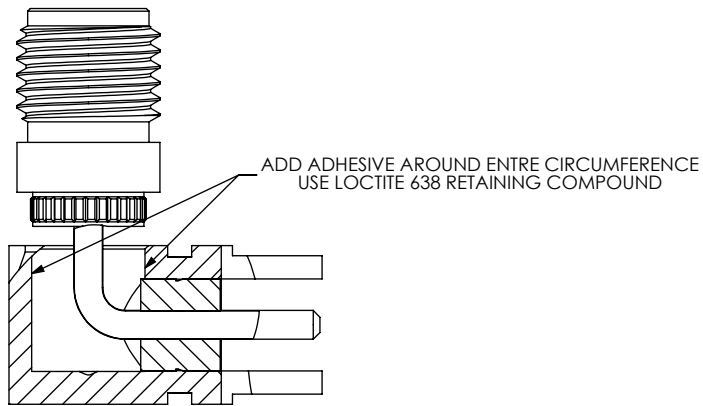
IN-PROCESS 1
INSERT INSULATOR 1



IN-PROCESS 2
INSERT INTO BODY



IN-PROCESS 3
ADD INSULATOR 2 TO SHELL



IN-PROCESS 4
ADD ADHESIVE TO BODY

F:\DWG\MISC\MKTG\SMA-J-P-X-RA-TH1-MKT.SLDDRW

PROPRIETARY NOTE
THIS DOCUMENT CONTAINS INFORMATION CONFIDENTIAL AND PROPRIETARY TO SAMTEC, INC. AND SHALL NOT BE REPRODUCED OR TRANSFERRED TO OTHER DOCUMENTS OR DISCLOSED TO OTHERS OR USED FOR ANY PURPOSE OTHER THAN THAT WHICH IT WAS OBTAINED WITHOUT THE EXPRESSED WRITTEN CONSENT OF SAMTEC, INC.

DO NOT SCALE DRAWING

SHEET SCALE: 3:1



520 PARK EAST BLVD, NEW ALBANY, IN 47150
PHONE: 812-944-6733 FAX: 812-948-5047
e-Mail: info@SAMTEC.com code: 55322

DESCRIPTION: SMA RIGHT ANGLE, JACK- 50 OHM

DWG. NO. SMA-J-P-X-RA-TH1

BY: R MUSSER 01/28/2008 SHEET 2 OF 2