



Chipsmall Limited consists of a professional team with an average of over 10 year of expertise in the distribution of electronic components. Based in Hongkong, we have already established firm and mutual-benefit business relationships with customers from,Europe,America and south Asia,supplying obsolete and hard-to-find components to meet their specific needs.

With the principle of “Quality Parts,Customers Priority,Honest Operation,and Considerate Service”,our business mainly focus on the distribution of electronic components. Line cards we deal with include Microchip,ALPS,ROHM,Xilinx,Pulse,ON,Everlight and Freescale. Main products comprise IC,Modules,Potentiometer,IC Socket,Relay,Connector.Our parts cover such applications as commercial,industrial, and automotives areas.

We are looking forward to setting up business relationship with you and hope to provide you with the best service and solution. Let us make a better world for our industry!



## Contact us

Tel: +86-755-8981 8866 Fax: +86-755-8427 6832

Email & Skype: info@chipsmall.com Web: www.chipsmall.com

Address: A1208, Overseas Decoration Building, #122 Zhenhua RD., Futian, Shenzhen, China



DESIGNED & DIMENSIONED  
IN MILLIMETERS [INCHES]

SMB7H-P-C-XX-RA-CA3

GENDER  
-P: PLUG

TERMINATION  
-CA3: CABLE (RG179)

TYPE  
-C: CABLE

ORIENTATION  
-RA: RIGHT ANGLE

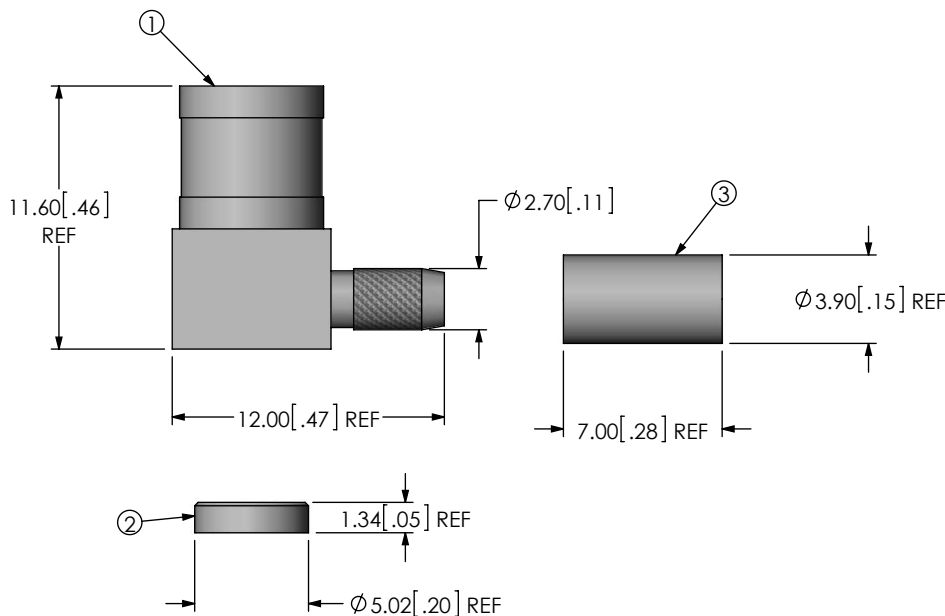
PLATING SPECIFICATION

-HN: 30µ" GOLD CENTER CONTACT,  
3µ" GOLD OUTER CONTACT,  
100µ" NICKEL REMAINING PARTS  
-HF: 30µ" GOLD CENTER CONTACT,  
3µ" GOLD OUTER CONTACT,  
3µ" GOLD REMAINING PARTS  
\*-H: 30µ" GOLD CENTER CONTACT,  
3µ" GOLD OUTER CONTACT,  
3µ" GOLD REMAINING PARTS  
(SEE TABLE 1)

(\*=EXISTING CUSTOMER ONLY)


TABLE 1				
ITEM	COMPONENT	-HN	-HF	*-H
1	SUB ASSEMBLY	SUB-SMB7H-P-C-HN-RA-CA3	SUB-SMB7H-P-C-H-RA-CA3	SUB-SMB7H-P-C-H-RA-CA3
2	CAP	SMB7-CAP-001-N	SMB7-CAP-001-F	SMB7-CAP-001-F
3	FERRULE	MCX-FER-001-N	MCX-FER-001-F	MCX-FER-001-F

DO NOT  
SCALE FROM  
THIS PRINT

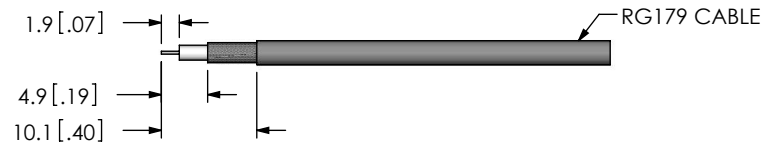


NOTES:

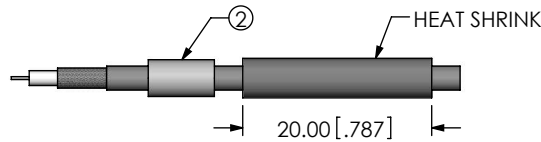
1. NOTE DELETED.
2. NOTE DELETED.
3. NOTE DELETED.
4. NOTE DELETED.
5. PRODUCT TO BE BULK PACKAGED PER PACKAGING STANDARD CO-RF-WI-3040-M.
6. NOTE DELETED.
7. NOTE DELETED.
8. NOTE DELETED.

<p>UNLESS OTHERWISE SPECIFIED, DIMENSIONS ARE IN MILLIMETERS [INCHES]. TOLERANCES ARE:</p> <p>DECIMALS      ANGLES</p> <p>.X: ±0.3 [.01]      2°</p> <p>.XX: ±0.13 [.005]</p> <p>.XXX: ±0.051 [.0020]</p>	<p><b>PROPRIETARY NOTE</b></p> <p>THIS DOCUMENT CONTAINS CONFIDENTIAL AND PROPRIETARY INFORMATION AND ALL DESIGN, MANUFACTURING, REPRODUCTION, USE, PATENT RIGHTS AND SALES RIGHTS ARE EXPRESSLY RESERVED BY SAMTEC, INC. THIS DOCUMENT SHALL NOT BE DISCLOSED, IN WHOLE OR PART, TO ANY UNAUTHORIZED PERSON OR ENTITY NOR REPRODUCED, TRANSFERRED OR INCORPORATED IN ANY OTHER PROJECT IN ANY MANNER WITHOUT THE EXPRESS WRITTEN CONSENT OF SAMTEC, INC.</p>	 <p>520 PARK EAST BLVD, NEW ALBANY, IN 47150 PHONE: 812-944-6733    FAX: 812-948-5047 e-Mail: info@SAMTEC.com    code 55322</p>
<p>BY: G. HERMAN    03/24/2008</p>		<p>SHEET 1 OF 2</p>

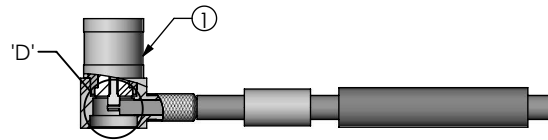
**IN-PROCESS 1**  
STRIP CABLE AND TIN INNER CONDUCTOR



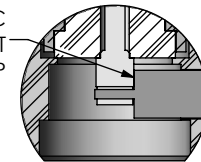
**IN-PROCESS 2**  
ADD HEAT SHRINK TUBING AND FERRULE



**IN-PROCESS 3**  
FLARE SHIELD & ADD SUB ASSEMBLY

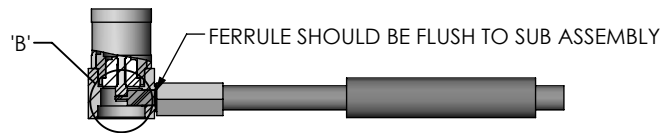


END OF CABLE DIELECTRIC  
SHOULD SEAT AGAINST  
CONTACT CUP

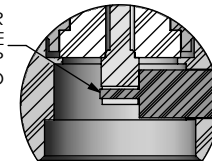


DETAIL 'D'

**IN-PROCESS 4**  
CRIMP FERRULE  
(USE RF CRIMP HAND TOOL #CAT-RF-FER-01,  
AND .128" DIE SIZE)

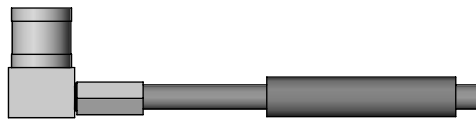


CABLE CENTER CONDUCTOR  
SHOULD NOT PROTRUDE  
OUTSIDE CONTACT CUP  
AFTER FERRULE IS CRIMPED

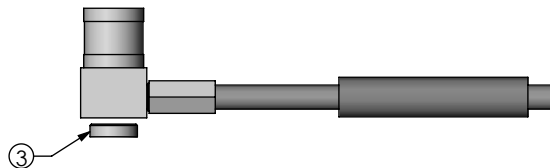


DETAIL 'B'

**IN-PROCESS 5**  
SOLDER SIGNAL SOCKET



**IN-PROCESS 6**  
PRESS CAP WITH CHAMFERED EDGE INWARDS



**IN-PROCESS 7**  
ATTACH HEAT SHRINK



**PROPRIETARY NOTE**  
THIS DOCUMENT CONTAINS CONFIDENTIAL AND PROPRIETARY INFORMATION AND ALL DESIGN, MANUFACTURING, REPRODUCTION, USE, PATENT RIGHTS AND SALES RIGHTS ARE EXPRESSLY RESERVED BY SAMTEC, INC. THIS DOCUMENT SHALL NOT BE DISCLOSED, IN WHOLE OR PART, TO ANY UNAUTHORIZED PERSON OR ENTITY NOR REPRODUCED, TRANSFERRED OR INCORPORATED IN ANY OTHER PROJECT IN ANY MANNER WITHOUT THE EXPRESS WRITTEN CONSENT OF SAMTEC, INC.



520 PARK EAST BLVD, NEW ALBANY, IN 47150  
PHONE: 812-944-6733 FAX: 812-948-5047  
e-Mail info@SAMTEC.com code 55322

DO NOT SCALE DRAWING

SHEET SCALE: 1.25:1

DESCRIPTION:  
TRUE 75 OHM, SMB RIGHT ANGLE PLUG, RG179

DWG. NO.  
**SMB7H-P-C-XX-RA-CA3**

BY: G. HERMAN 03/24/2008 SHEET 2 OF 2