



Chipsmall Limited consists of a professional team with an average of over 10 year of expertise in the distribution of electronic components. Based in Hongkong, we have already established firm and mutual-benefit business relationships with customers from,Europe,America and south Asia,supplying obsolete and hard-to-find components to meet their specific needs.

With the principle of “Quality Parts,Customers Priority,Honest Operation,and Considerate Service”,our business mainly focus on the distribution of electronic components. Line cards we deal with include Microchip,ALPS,ROHM,Xilinx,Pulse,ON,Everlight and Freescale. Main products comprise IC,Modules,Potentiometer,IC Socket,Relay,Connector.Our parts cover such applications as commercial,industrial, and automotives areas.

We are looking forward to setting up business relationship with you and hope to provide you with the best service and solution. Let us make a better world for our industry!



Contact us

Tel: +86-755-8981 8866 Fax: +86-755-8427 6832

Email & Skype: info@chipsmall.com Web: www.chipsmall.com

Address: A1208, Overseas Decoration Building, #122 Zhenhua RD., Futian, Shenzhen, China

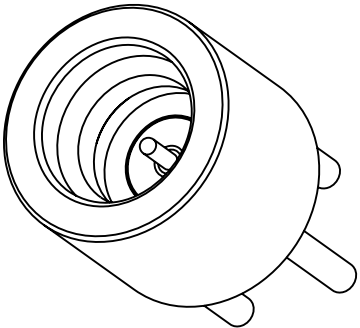


- NOTES:
1. MATERIALS AND FINISHES:
BODY - BRASS, GOLD PLATING, OVER HIGH PHOSPHOROUS NICKEL
CONTACT - BRASS, GOLD PLATING, OVER HIGH PHOSPHOROUS NICKEL
INSULATOR - PTFE
2. ELECTRICAL:
A. IMPEDANCE: 50 OHM
B. FREQUENCY RANGE: DC - 12 GHz
C. VSWR: 1.15 MAX
D. DIELECTRIC WITHSTANDING VOLTAGE - 500 VRMS MIN
3. MECHANICAL:
A. TEMPERATURE RANGE: -65° C TO +165° C
B. DURABILITY: 500 CYCLES MIN.
4. PACKAGING:
A. QUANTITY: SINGLE PACK
B. MARKING: BAG TO BE MARKED
"AMPHENOLRF, SMP-FS-LDPCT, AND DATE CODE"

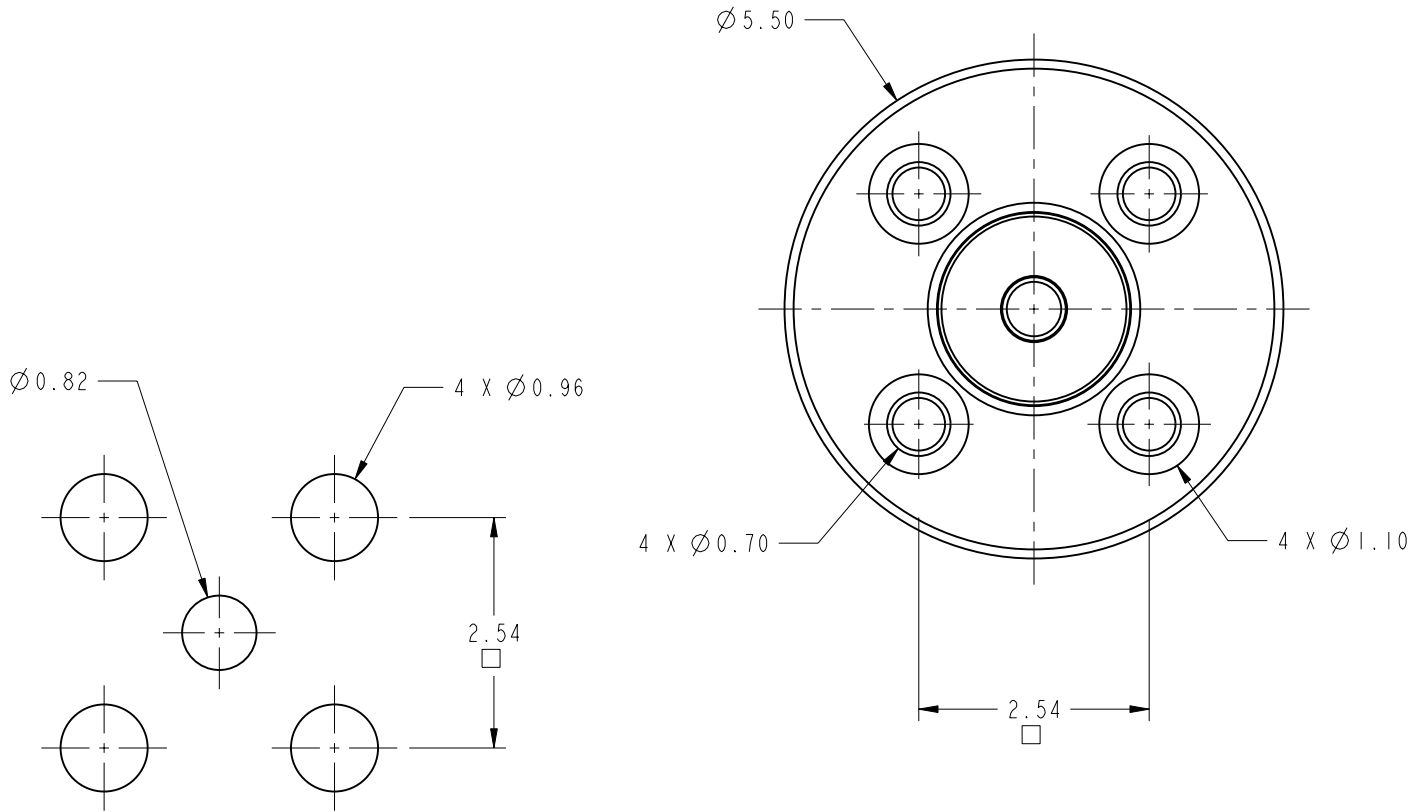
THIRD ANGLE PROJ.

REVISIONS

REV	DESCRIPTION	DATE	ECO	APPR
A	RELEASED TO MFG	16-Jan-12	47842	SH



SCALE 6.000



SCALE 12.000
RECOMMENDED MOUNTING
HOLE DIMENSION

CUSTOMER OUTLINE DRAWING
ALL OTHER SHEETS ARE FOR INTERNAL USE ONLY

UNLESS OTHERWISE SPECIFIED, DIMENSIONS ARE IN METRIC AND TOLERANCES ARE:
<0.5mm ± 0.05mm 0.5 - 6mm ± 0.1mm 6 - 30mm ± 0.2mm 30 - 120mm ± 0.3mm ANGLES ±1°

NOTICE - These drawings, specifications, or other data (1) are, and remain the property of Amphenol corp. (2) must be returned upon request; and (3) are confidential and not to be disclosed to any person other than those to whom they are given by Amphenol Corp. the furnishing of these drawings, specifications, or other data by Amphenol Corp., or to any other person to anyone for any purpose is not to be regarded by implicatioin or otherwise in any manner licensing, granting rights to permitting such holder or any other sperson to manufacture, use or sell any product, process or design, patented or otherwsie, that may in any way be related to or disclosed by said drawings, specifications, or other data.

MATERIAL
SEE TABLE

REFERENCE
EAR # 2983 AND 615X-2333-200

CONFIGURATION LEVEL: ☐ ☐ ☐

FINISH

DRAWN
S.LI

DATE
13-Jan-12

ENGINEER
NISCHIT MV

DATE
03-Nov-09

APPROVED
S.HSIEH

DATE
17-Jan-12

CAD FILE

Root Folder/SMP/SMP-FS-LDPCT

TITLE
ASSEMBLY
SMP, JACK
LIMITED DETENT

SCALE: 12.0:1.0 SHEET 2 OF 2

DWG SIZE
B

REV

A

Amphenol RF

Danbury CT USA, Tainan, Taiwan, Shenzhen, China
www.amphenolrf.com

DRAWING NO.SMP-FS-LDPCT

ITEM NO.SMP-FS-LDPCT

PART NO.SMP-FS-LDPCT