



Chipsmall Limited consists of a professional team with an average of over 10 year of expertise in the distribution of electronic components. Based in Hongkong, we have already established firm and mutual-benefit business relationships with customers from,Europe,America and south Asia,supplying obsolete and hard-to-find components to meet their specific needs.

With the principle of “Quality Parts,Customers Priority,Honest Operation,and Considerate Service”,our business mainly focus on the distribution of electronic components. Line cards we deal with include Microchip,ALPS,ROHM,Xilinx,Pulse,ON,Everlight and Freescale. Main products comprise IC,Modules,Potentiometer,IC Socket,Relay,Connector.Our parts cover such applications as commercial,industrial, and automotives areas.

We are looking forward to setting up business relationship with you and hope to provide you with the best service and solution. Let us make a better world for our industry!



## Contact us

Tel: +86-755-8981 8866 Fax: +86-755-8427 6832

Email & Skype: info@chipsmall.com Web: www.chipsmall.com

Address: A1208, Overseas Decoration Building, #122 Zhenhua RD., Futian, Shenzhen, China



DO NOT SCALE FROM THIS PRINT

DESIGNED & DIMENSIONED IN MILLIMETERS [INCHES]

SMP-J-B-XX-ST-XXXX

GENDER  
-J: JACK

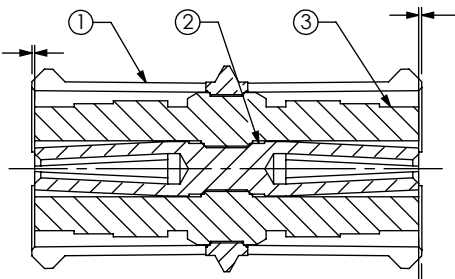
TYPE  
-B: BULLET

LENGTH  
-0645: 6.45MM  
\*-0700: 7.00MM  
\*-1000: 10.00MM  
-1450: 14.50MM

ORIENTATION  
-ST: STRAIGHT

**B**  $\text{\textcircled{C}}$

$0.05^{+0.12}_{-0.05} [ .002^{+.005}_{-.002} ]$   
(FROM SHELL TO INSULATOR, SEE NOTE 4)



$0.05^{+0.12}_{-0.05} [ .002^{+.005}_{-.002} ]$   
(FROM SHELL TO CONTACT) **B**

$0.05^{+0.12}_{-0.05} [ .002^{+.005}_{-.002} ]$   
(FROM SHELL TO INSULATOR) **B**

SECTION "A"- "A"

PLATING SPECIFICATION  
(VALUES GIVEN ARE IN MICRO-INCHES)

-HG: HEAVY GOLD / GOLD  
30 Au / 50 Ni MIN ON PIN  
10 Au / 50 Ni MIN ON OUTER CONTACT

-GF: GOLD / FLASH GOLD  
10 Au / 50 Ni MIN ON PIN  
3 Au / 50 Ni MIN ON OUTER CONTACT  
(SEE TABLE 1)

\* = NOT TOOLED

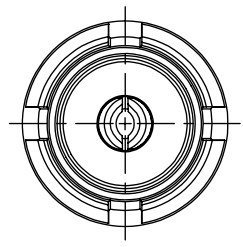
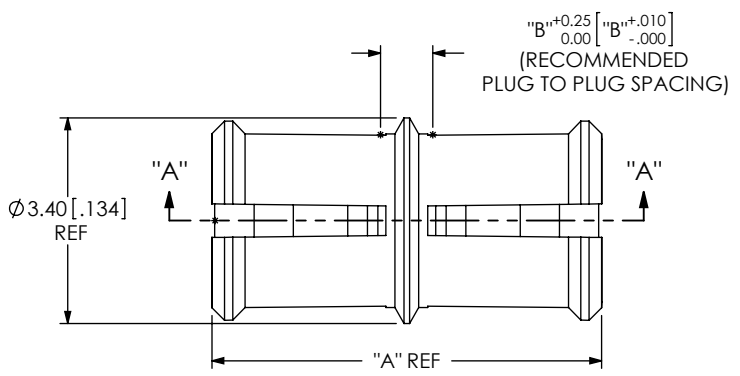


TABLE 2

LENGTH	"A"	"B"	SMP-P-B-ST-XXX-INS	QTY
-0645	6.45 [254]	0.86 [034]	SMP-J-B-ST-0645-INS	1
*-0700	7.00 [276]	1.41 [056]	SMP-J-B-ST-0700-INS	1
*-1000	10.00 [394]	4.41 [174]	SMP-J-B-ST-1000-INS	1
-1450	14.50 [571]	8.91 [351]	SMP-J-B-ST-INS	2

\* = NOT TOOLED

TABLE 1

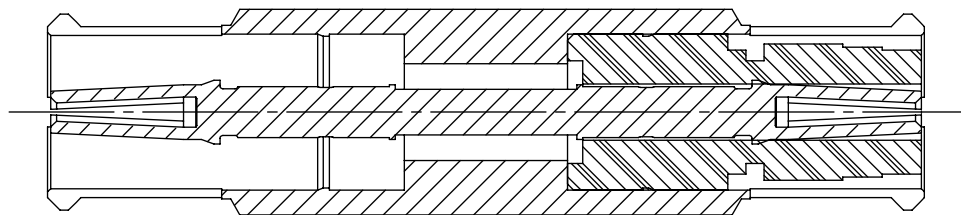
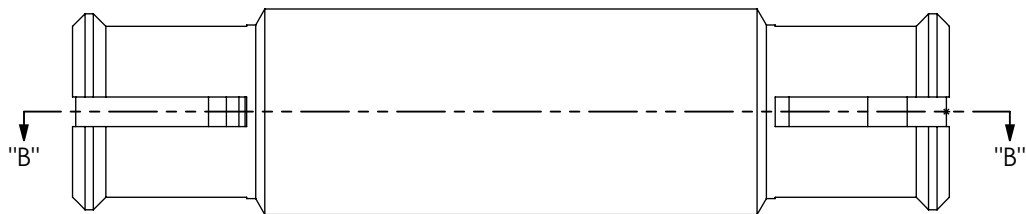
ITEM	COMPONENT	-HG	-GF
1	SHELL	SMP-J-B-G-ST-XXXX-SHL	SMP-J-B-F-ST-XXXX-SHL
2	SOCKET	SMP-J-B-H-ST-XXXX-SKT	SMP-J-B-G-ST-XXXX-SKT
3	INSULATOR	SMP-J-B-ST-XXXX-INS (SEE TABLE 2)	

NOTES:

- $\text{\textcircled{C}}$  REPRESENTS A CRITICAL DIMENSION.
- MINIMUM PUSHOUT FORCE FOR CENTER CONTACT: 6.67 N [1.5 LB].  
INSULATOR: 6.67 N [1.5 LB].
- PRODUCT TO BE PACKAGED PER PACKING STANDARD CO-HD-WI-3040-M.  
TRAY: TY-SMA001-1  
COVER: TY-SMA001-2  
-0645: 500 PARTS PER TRAY (5 PARTS PER POCKET),  
-0700, -1000 & -1450: 300 PARTS PER TRAY (3 PARTS PER POCKET)
- APPLICABLE ON -1450 LENGTH ONLY.

<p>UNLESS OTHERWISE SPECIFIED, DIMENSIONS ARE IN MILLIMETERS. TOLERANCES ARE:</p> <p>DECIMALS ANGLES</p> <p>X.X: <math>\pm 0.3 [ .01 ]</math> 5°</p> <p>X.XX: <math>\pm 0.13 [ .005 ]</math></p> <p>X.XXX: <math>\pm 0.051 [ .0020 ]</math></p>	<p>PROPRIETARY NOTE</p> <p>THIS DOCUMENT CONTAINS INFORMATION CONFIDENTIAL AND PROPRIETARY TO SAMTEC, INC. AND SHALL NOT BE REPRODUCED OR TRANSFERRED TO OTHER DOCUMENTS OR DISCLOSED TO OTHERS OR USED FOR ANY PURPOSE OTHER THAN THAT WHICH IT WAS OBTAINED WITHOUT THE EXPRESSED WRITTEN CONSENT OF SAMTEC, INC.</p>	<p>520 PARK EAST BLVD., NEW ALBANY, IN 47150 PHONE: 812-944-6733 FAX: 812-948-5047 e-Mail: info@SAMTEC.com code 55322</p>	
		<p>MATERIAL: DO NOT SCALE DRAWING SHEET SCALE: 8:1</p> <p>PIN, SHELL: BeCu INSULATOR: PTFE</p>	<p>DESCRIPTION: SMP BULLET - 50 OHM</p> <p>DWG. NO. SMP-J-B-XX-ST-XXXX</p> <p>BY: T MEEK 12/3/2010 SHEET 1 OF 2</p>

IN-PROCESS 1  
 INSERT PIN / INSULATOR (1)  
 (-1450 OPTION ONLY)



SECTION "B"-"B"

PROPRIETARY NOTE

THIS DOCUMENT CONTAINS INFORMATION CONFIDENTIAL AND PROPRIETARY TO SAMTEC, INC. AND SHALL NOT BE REPRODUCED OR TRANSFERRED TO OTHER DOCUMENTS OR DISCLOSED TO OTHERS OR USED FOR ANY PURPOSE OTHER THAN THAT WHICH IT WAS OBTAINED WITHOUT THE EXPRESSED WRITTEN CONSENT OF SAMTEC, INC.

DO NOT SCALE DRAWING

SHEET SCALE: 8:1

**samtec**

520 PARK EAST BLVD, NEW ALBANY, IN 47150  
 PHONE: 812-944-6733 FAX: 812-948-5047  
 e-Mail info@SAMTEC.com code 55322

DESCRIPTION:

SMP BULLET - 50 OHM

DWG. NO.

SMP-J-B-XX-ST-XXXX

BY: T MEEK

12/3/2010

SHEET 2 OF 2